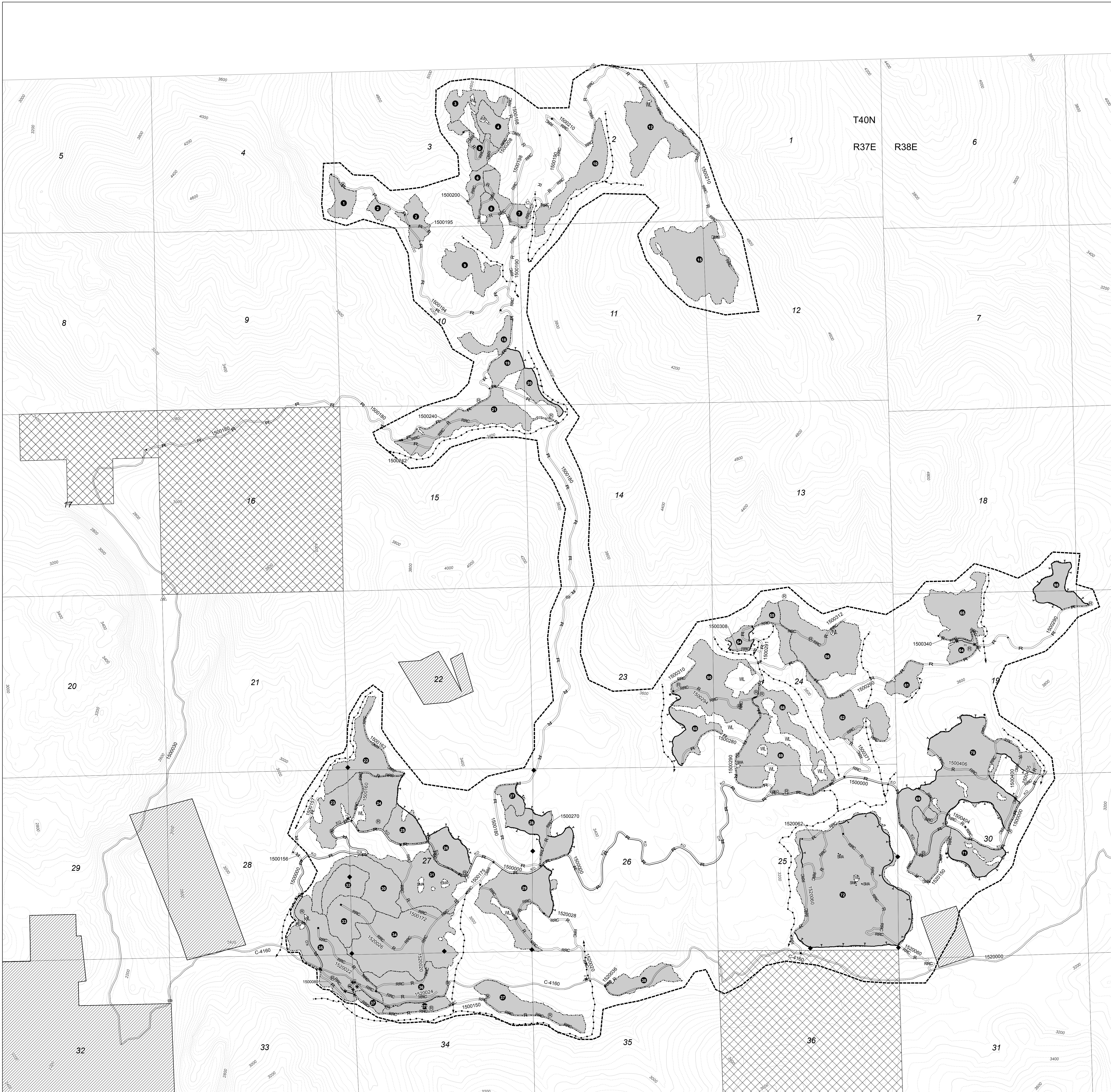


**East Wedge Stewardship
Contract Area and Slash Disposal Map
Three Rivers Ranger District
Colville National Forest
page 1 of 1**



Legend

- Contract Area Boundary, B.1
- State Ownership
- Private Ownership
- Subdivision Boundary, B.1
- Existing Transportation System, F.1.2
- Existing Road, Hauling Restricted, K-F.1.2#
- Specified Road Reconstruction, F.2, A.7
- Keep Road Open, G.2.2
- Subdivision, C.3
- Reserve Trees, K-C.3#, K-G.3.2#
- Special Measures Area, G.2.4, K-G.2.4#
- Wetlands Protection, G.6.2, K-G.6.2#
- Water Source, K-F.3.1#
- Protect Improvements-Cattle Guard/Gate, K-G.2.2#
- Protect Improvements - Campsite, K-G.2.2#
- Protect Known Survey Monument, G.2.3
- Protect Improvements - Fence, K-G.2.2#
- Tractor Fireline, K-G.7.4.2#
- Protect Streamcourse, G.5
- Winter Log K-G.3.1.5#
- Cut-To-Length K-G.4.2#, K-G.3.1.5#
- Forwarder K-G.4.2#
- Leave Tree Mark K-C.3.5.7#
- Individual Tree Mark K-C.3.5.7#
- Designation By Prescription K-C.3.5.5#

Notes
Industrial Fire Precaution Class Zone is 686. K-H.7.2
Landings, temporary roads, and skid trails are to be scarified to a depth of 4 inches and seeded where designated. K-G.6.0#

Subdivision B.1	Acres	Designation	Restrictions K-G.3.1.5#	Logging Systems	Mandatory Projects K-G.5#
1	14	LTM		Cable	3
2	22	DxPre	W/CTL/F		1, 2, 4
3	21	LTM	W		
4	16	LTM			
5	17	DxPre			1
6	12	DxPre			1
7	20	DxPre			1, 3
8	16	DxPre			1, 3
9	29	LTM			3
10	37	LTM		CTL/F	4
12	50	DxPre			2, 4
15	81	LTM	W/CTL/F		
18	15	DxPre	W/CTL/F	Tractor/Cable	1, 4
19	15	LTM			
20	12	LTM			
21	54	DxPre			1, 4
22	40	DxPre			1
23	34	DxPre			1, 3
24	34	DxPre			1
25	20	DxPre			1
26	24	DxPre			1
27	11	DxPre			1
28	33	LTM			4
29	63	LTM			3
30	43	DxPre			1
31	56	DxPre			1
32	24	DxPre			1
33	31	DxPre			1
34	106	DxPre			1
35	74	ITM			3
36	42	DxPre			1, 3
37	39	DxPre			1, 3
38	22	DxPre	W		1, 3
50	101	LTM	W		
54	9	LTM			
55	16	DxPre			1
56	68	LTM			3
58	32	LTM			
59	59	LTM			
61	15	LTM			
62	45	LTM			
64	10	DxPre			1
65	45	DxPre			1
69	22	DxPre	W		1
70	154	LTM			
71	26	LTM			
72	233	DxPre			1
98	25	DxPre			1
370	12	DxPre		Cable	1, 3

