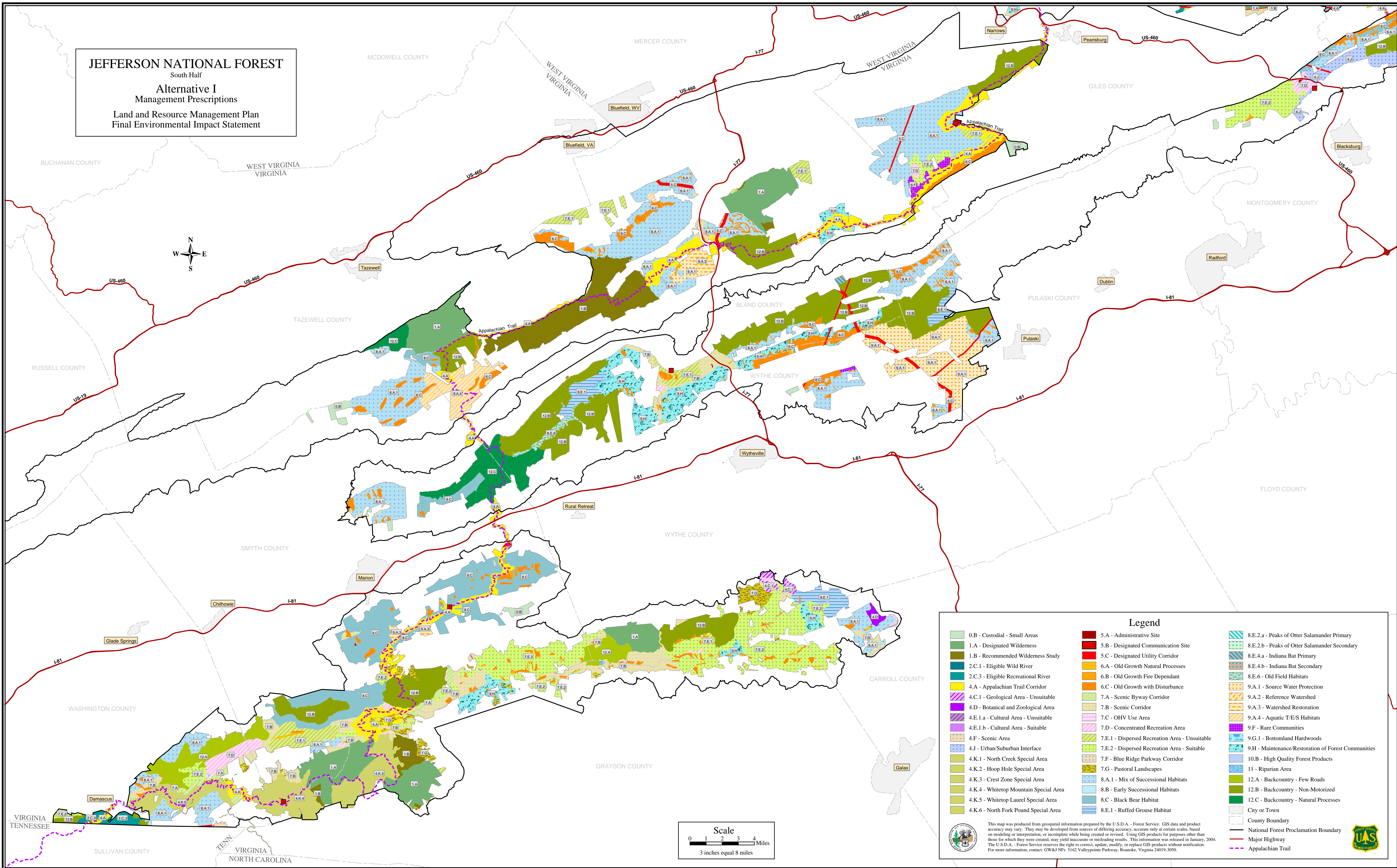


JEFFERSON NATIONAL FOREST
 South Half
Alternative I
 Management Prescriptions
 Land and Resource Management Plan
 Final Environmental Impact Statement



Legend

0.B - Custodial - Small Areas	5.A - Administrative Site	8.E.2.a - Peaks of Otter Salamander Primary
1.A - Designated Wilderness	5.B - Designated Communication Site	8.E.2.b - Peaks of Otter Salamander Secondary
1.B - Recommended Wilderness Study	5.C - Designated Utility Corridor	8.E.4.a - Indiana Bat Primary
2.C.1 - Eligible Wild River	6.A - Old Growth Natural Processes	8.E.4.b - Indiana Bat Secondary
2.C.3 - Eligible Recreational River	6.B - Old Growth Fire Dependant	8.E.6 - Old Field Habitats
4.A - Appalachian Trail Corridor	6.C - Old Growth with Disturbance	9.A.1 - Source Water Protection
4.C.1 - Geological Area - Unsuitable	7.A - Scenic Byway Corridor	9.A.2 - Reference Watershed
4.D - Botanical and Zoological Area	7.B - Scenic Corridor	9.A.3 - Watershed Restoration
4.E.1.a - Cultural Area - Unsuitable	7.C - OHV Use Area	9.A.4 - Aquatic T/E/S Habitats
4.E.1.b - Cultural Area - Suitable	7.D - Concentrated Recreation Area	9.F - Rare Communities
4.F - Scenic Area	7.E.1 - Dispersed Recreation Area - Unsuitable	9.G.1 - Bottomland Hardwoods
4.J - Urban/Suburban Interface	7.E.2 - Dispersed Recreation Area - Suitable	9.H - Maintenance/Restoration of Forest Communities
4.K.1 - North Creek Special Area	7.F - Blue Ridge Parkway Corridor	10.B - High Quality Forest Products
4.K.2 - Hoop Hole Special Area	7.G - Pastoral Landscapes	11 - Riparian Area
4.K.3 - Crest Zone Special Area	8.A.1 - Mix of Successional Habitats	12.A - Backcountry - Few Roads
4.K.4 - Whitetop Mountain Special Area	8.B - Early Successional Habitats	12.B - Backcountry - Non-Motorized
4.K.5 - Whitetop Laurel Special Area	8.C - Black Bear Habitat	12.C - Backcountry - Natural Processes
4.K.6 - North Fork Pound Special Area	8.E.1 - Ruffed Grouse Habitat	City or Town
		County Boundary
		National Forest Proclamation Boundary
		Major Highway
		Appalachian Trail

Scale
 0 1 2 3 4 Miles
 3 inches equal 8 miles

This map was produced from geospatial information prepared by the U.S.D.A. - Forest Service. GIS data and product accuracy may vary. They may be developed from sources of differing accuracy, accurate only at certain scales, based on modeling or interpretation, or incomplete while being created or revised. Using GIS products for purposes other than those for which they were created, may yield inaccurate or misleading results. This information was released in January, 2004. The U.S.D.A. - Forest Service reserves the right to correct, update, modify, or replace GIS products without notification. For more information, contact: GW&J/NFS 5162 Valleypointe Parkway, Roanoke, Virginia 24019-3050.

