






MEDICINE BOW-ROUTT NATIONAL FORESTS  
 THUNDER BASIN NATIONAL GRASSLAND  
 HAHNS PEAK-BEARS EARS RANGER DISTRICT

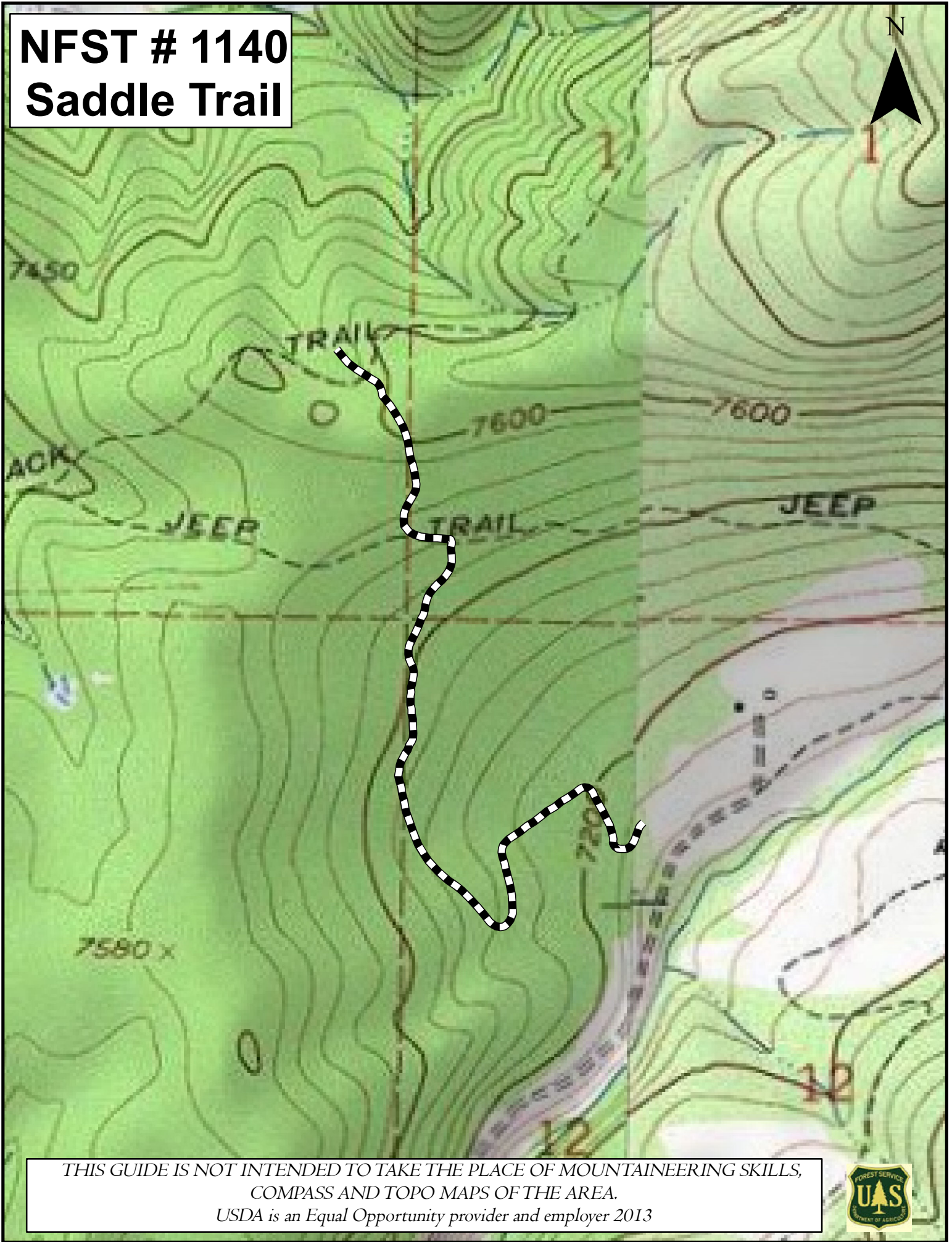
|  |  |   |  |
|--|--|---|--|
|     |  | <b>TRAIL NAME: #1140 SADDLE</b>   |  |
| <p><b>TRAIL BEGINNING:</b> 7200' elevation junction with #1100 (2195m)</p> <p><b>TRAIL ENDING:</b> 7600' elevation junction with #1171 (2316m)</p>   |  | <p><b>LENGTH:</b> 1.1 mi (1.77 km)</p> <p><b>RECOMMENDED SEASON:</b><br/>                 Spring   Summer   Fall</p> <p><b>**WILDLIFE CLOSURE IN WINTER</b></p> |  |
| <p><b>ACCESS #1:</b> Drive west of Steamboat on U.S. 40 approximately 2 miles. Turn north on county road #129, Elk River Road. Travel about 5 miles to Mad Creek Trailhead on the right side of the road. Hike 2 miles up the Swamp Park Trail #1100 to just before the Mad Creek Guard Station to the junction with Saddle Trail #1140.</p> |  | <p><b>USE:</b> Moderate to High</p> <p><b>DIFFICULTY:</b> More Difficult</p> <p><b>USGS MAP(S):</b> Mad Creek</p>   |  |
| <p><b>ACCESS #2 :</b> Drive west of Steamboat on U.S. 40 approximately 2 miles. Turn north on County Road 129, Elk River Road. Travel about 7 miles to Red Dirt Trailhead on the right side of the road. Hike 1.5 miles up the Red Dirt Trail #1171 to junction with Saddle Trail #1140.</p>   |  |   |  |
| <p><b>ATTRACTIONS AND CONSIDERATIONS:</b> This makes a nice loop with Red Dirt Trail and the Swamp Park Trail.</p>   |  |   |  |
| <p><b>NARRATIVE:</b> From the Swamp Park Trail #1100, the Saddle Trail starts out as a double track old road. It winds up the ridge through aspen and oak brush and narrows to a single track at the top of the saddle. At this point it's a short downhill trip to the Red Dirt Trail #1171.</p>  |  |   |  |

Last updated: January 2013  
 925 Weiss Drive  
 Steamboat Springs, CO 80487  
 (970) 870-2299

Website address: [www.fs.fed.us/r2/mbr/rd-hpbe](http://www.fs.fed.us/r2/mbr/rd-hpbe)

“The USDA Forest Service is an equal opportunity provider and employer.”

# NFST # 1140 Saddle Trail



*THIS GUIDE IS NOT INTENDED TO TAKE THE PLACE OF MOUNTAINEERING SKILLS,  
COMPASS AND TOPO MAPS OF THE AREA.  
USDA is an Equal Opportunity provider and employer 2013*

