



MEDICINE BOW-ROUTT NATIONAL FORESTS  
 THUNDER BASIN NATIONAL GRASSLAND  
 HAHNS PEAK-BEARS EARS RANGER DISTRICT

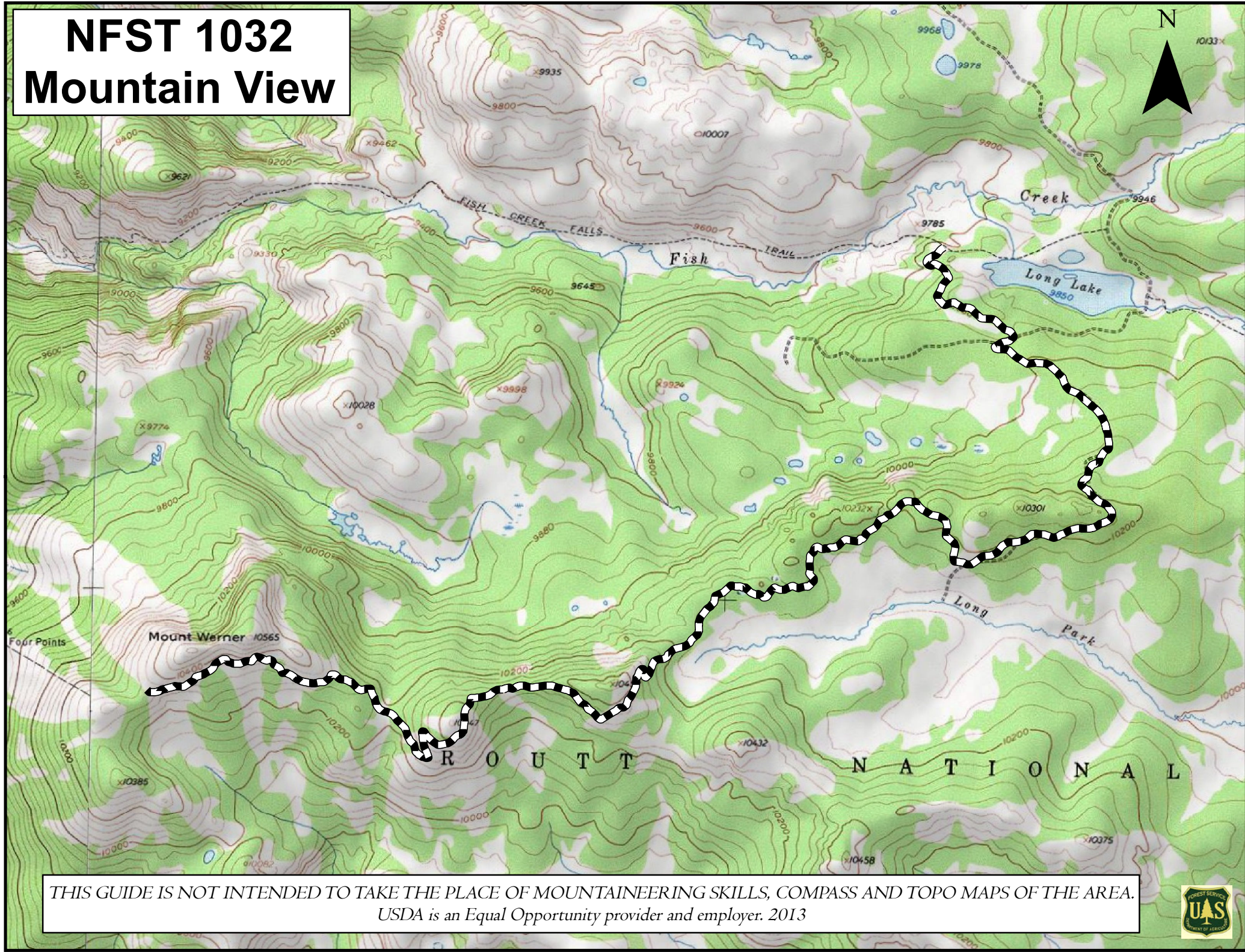
	<p><b><u>TRAIL NAME:</u> NFST 1032 MOUNTAIN VIEW</b></p>
<p><b><u>TRAIL BEGINNING:</u></b> 10,400' elevation (3170 m) at Storm Peak Trailhead <u>or</u> from Fish Creek Trail 1102 right before you reach Long Lake.</p> <p><b><u>TRAIL ENDING:</u></b> 9850' elevation (3002 m) at Long Lake Reservoir.</p>	<p><b><u>LENGTH:</u></b> 6.3 mi (10.1 km)</p> <p><b><u>RECOMMENDED SEASON:</u></b>                  Summer   Fall</p>
<p><b><u>ACCESS:</u></b> The Storm Peak Trailhead can only be accessed from other mountain bike or hiking trails located on Mount Werner. The user can ride or hike from the base of the ski area, using a variety of trails, to reach the trailhead at Storm Peak. Or the user can ride the Silver Bullet Gondola to Thunderhead and hike or bike to the top from there.</p> <p>NFST 1032 can also be accessed by the NFST 1102 Fish Creek Falls Trail. Just before you arrive at Long Lake, 1032 trail takes off to the south.</p>	<p><b><u>USE:</u></b> Moderate</p> <p><b><u>DIFFICULTY:</u></b> Moderate</p> <p><b><u>USGS MAP(S):</u></b> Mount Werner and Buffalo Pass Quads.</p>
<p><b><u>ATTRACTIONS AND CONSIDERATIONS:</u></b> Only non-motorized travel is permitted on this six mile long trail and it is anticipated that the predominant use will be that of mountain bikers. It is a "connector" trail from Mount Werner to Long Lake and functions to compliment the existing trails in the area by forming a loop for hikers and mountain bikers. It connects 25 miles of summer-use trails within the Steamboat Ski Area to a system of Forest Service trails which includes the Fish Creek Falls Trail #1102 (National Recreation Trail), Wyoming Trail #1101 (Continental Divide National Scenic Trail) and Percy Lake Trail #1134 that continues into the Parks District.</p>	
<p><b><u>NARRATIVE:</u></b> From the Storm Peak trailhead, the Mountain View Trail takes the user on 4 miles of single-track, 4 miles on a ridge east of the Steamboat Ski Area then 2 miles north to Long Lake Reservoir. At Long Lake Reservoir the trail picks up an existing two-track road for another mile up to NFSR 310.</p>	

Last updated: January 2013  
 925 Weiss Drive  
 Steamboat Springs, CO 80487  
 (970) 870-2299

Website address: [www.fs.fed.us/r2/mbr/rd-hpbe](http://www.fs.fed.us/r2/mbr/rd-hpbe)

“The USDA Forest Service is an equal opportunity provider and employer.”

# NFST 1032 Mountain View



THIS GUIDE IS NOT INTENDED TO TAKE THE PLACE OF MOUNTAINEERING SKILLS, COMPASS AND TOPO MAPS OF THE AREA.  
USDA is an Equal Opportunity provider and employer. 2013

