



MEDICINE BOW-ROUTT NATIONAL FORESTS
 THUNDER BASIN NATIONAL GRASSLAND
 HAHNS PEAK-BEARS EARS RANGER DISTRICT

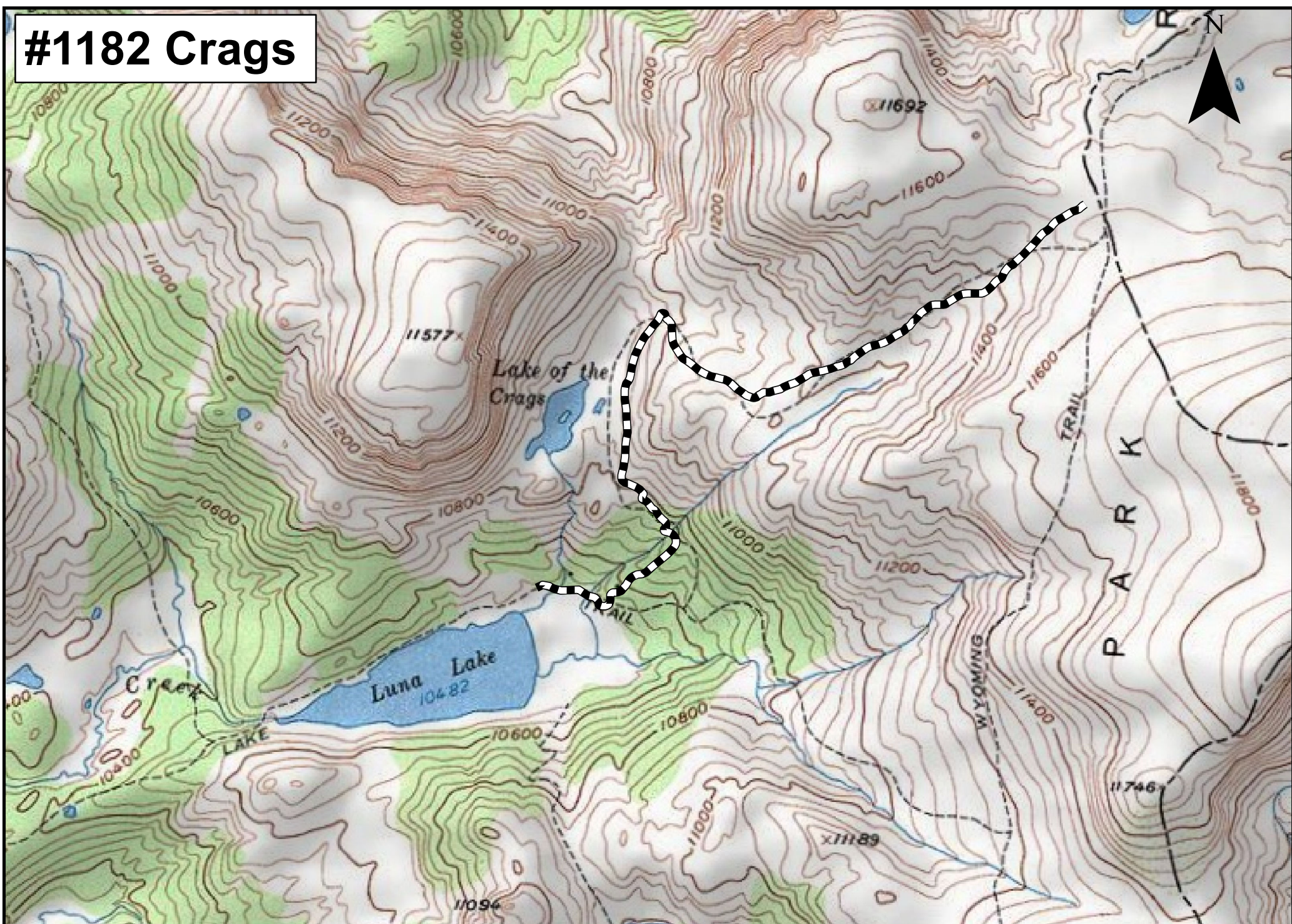
	<p><u>TRAIL NAME:</u> #1182 CRAGS</p>	
<p><u>TRAIL BEGINNING:</u> 10,500' elevation 3200m) at junction with #1168, Luna Lake Trail.</p> <p><u>TRAIL ENDING:</u> 11,500' elevation (3505m) at junction with #1101, Continental Divide Trail.</p>	<p><u>LENGTH</u> 1.8 mi (2.9 km)</p> <p><u>RECOMMENDED SEASON:</u> Summer Fall</p>	
<p><u>ACCESS:</u> Go north of Steamboat on the Strawberry Park Road to County Road 60 (Buffalo Pass Road) and turn right. Travel approximately 11 miles on this road. Just before Summit Lake, turn right and park in the provided parking lot. Walk the Wyoming Trail #1101, about 6 miles. Turn left onto Luna Lake Trail #1168 and follow it to Luna Lake and the junction with Craggs Trail #1182 at the NE corner of the Lake.</p>	<p><u>USE:</u> Light to Moderate</p> <p><u>DIFFICULTY:</u> Difficult</p> <p><u>USGS MAP(S):</u> Mt. Ethel Quad.</p>	
<p><u>ATTRACTIONS AND CONSIDERATIONS:</u> There is adequate parking at the Buffalo Pass TH. Please help protect the vegetation by using the provided parking lot. The trail described can be combined with others to provide a multi-day backpacking trip. While views are outstanding and the lake pristine, part of the Craggs Trail is in an area where much snow cover is still encountered in July and August. This portion is marked by cairns up to its junction with the Divide. Please remember Wilderness Ethics during your trail time.</p>		
<p><u>NARRATIVE:</u> Beginning the Craggs Trail from Luna Lake, the user will wind uphill through thick forest and pass Lake of the Craggs on the left after about 3/4 mile. Leaving Lake of the Craggs, the trail continues gently uphill turning sharply east up through meadows of snowpack seen through late August. This portion of trail is marked by dispersed cairns. Continue to the top of the trail and junction with the Wyoming Trail #1101 on the Continental Divide. From this point views are extraordinary. See if you can pick out Mount Ethel at 11,924' or Lost Ranger Peak at 11,932'.</p>		

Last updated: January 2013
 925 Weiss Drive
 Steamboat Springs, CO 80487
 (970) 870-2299

Website address: www.fs.fed.us/r2/mbr/rd-hpbe

“The USDA Forest Service is an equal opportunity provider and employer.”

#1182 Crags



THIS GUIDE IS NOT INTENDED TO TAKE THE PLACE OF MOUNTAINEERING SKILLS, COMPASS AND TOPO MAPS OF THE AREA.

USDA is an Equal Opportunity provider and employer. 2013

