



MEDICINE BOW-ROUTT NATIONAL FORESTS
 THUNDER BASIN NATIONAL GRASSLAND
 HAHNS PEAK-BEARS EARS RANGER DISTRICT

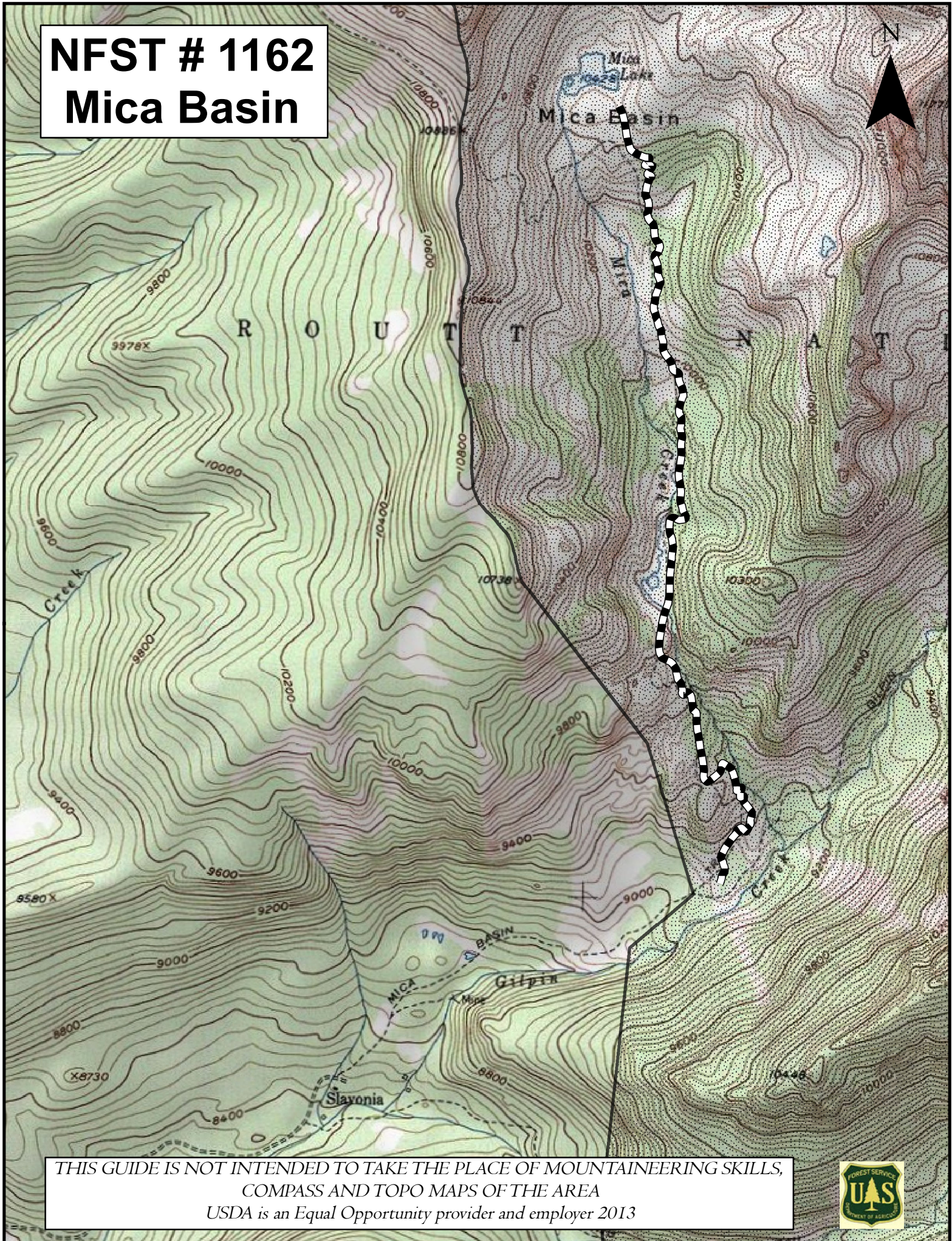
	<p><u>TRAIL NAME:</u> #1162 MICA BASIN</p>	
<p><u>TRAIL BEGINNING:</u> 9040' elevation at trail (2755 m) junction with Gilpin Lake Trail #1161.</p> <p><u>TRAIL ENDING:</u> 10,428 elevation at lake (3178 m).</p>	<p><u>LENGTH:</u> 2.7 mi (4.3km) (from #1162 TH)</p> <p><u>RECOMMENDED SEASON:</u> Summer Fall</p>	
<p><u>ACCESS :</u> Take Hwy 40 west of Steamboat Springs about 2 miles and turn right on to County Road 129. Travel north about 18 miles to the Seedhouse Road (NFSR 400; also CR 64) and turn right. Continue for about 13 miles to the end at the Slavonia Trailhead parking. Begin hiking the Gilpin Lake Trail #1161. Just after entering the Mount Zirkel Wilderness, 1.5 miles, you will meet Mica Basin Trail #1162 on your left.</p>	<p><u>USE:</u> Light to Moderate</p> <p><u>DIFFICULTY:</u> More Difficult</p> <p><u>USGS MAP(S):</u> Mt Zirkel, Farwell Mt Quads.</p>	
<p><u>ATTRACTIONS AND CONSIDERATIONS:</u> This trail ascends steeply for the first 1.5 miles through a lodgepole pine/spruce/fir forest before entering the beautiful Mica Basin. Mica Lake at the head of the basin is surrounded by 12,059' Big Agnes Mountain, Little Agnes Mountain, and the Sawtooth Range. Stock use is permitted but NOT RECOMMENDED due to lack of available trailer parking or turnaround at the TH and possible conflicts with very heavy hiker use. There are very few good legal sites for stock users to camp at the lake.</p>		
<p><u>NARRATIVE:</u> This trail leaves the Gilpin Lake Trail and ascends out of the Gilpin Creek canyon into the Mica Basin. Upon entering the basin, the trail crosses a slow moving Mica Creek and then follows it to Mica Lake.</p>		

Last updated: January 2013
 925 Weiss Drive
 Steamboat Springs, CO 80487
 (970) 870-2299

Website address: www.fs.fed.us/r2/mbr/rd-hpbe

“The USDA Forest Service is an equal opportunity provider and employer.”

NFST # 1162 Mica Basin



THIS GUIDE IS NOT INTENDED TO TAKE THE PLACE OF MOUNTAINEERING SKILLS,
COMPASS AND TOPO MAPS OF THE AREA
USDA is an Equal Opportunity provider and employer 2013

