



MEDICINE BOW-ROUTT NATIONAL FORESTS
 THUNDER BASIN NATIONAL GRASSLAND
 HAHNS PEAK-BEARS EARS RANGER DISTRICT

	<p><u>TRAIL NAME:</u> #1150 GOLD CREEK LAKE</p>
<p><u>TRAIL BEGINNING:</u> 8400' elevation (2560m) at Slavonia Trailhead.</p>	<p><u>LENGTH:</u> 4.3 mi (6.9km)</p>
<p><u>TRAIL ENDING:</u> Portion that ends at Hahns Peak/Bears Ears District boundary: 11200' elevation (3414m) at Continental Divide.</p>	<p><u>RECOMMENDED SEASON:</u> <u>Summer Fall</u></p>
<p><u>ACCESS :</u> Take Hwy 40 west of Steamboat Springs about 2 miles and turn right onto County Road 129. Travel north about 18 miles to the Seedhouse Road (NFSR 400; also CR 64) and turn right. Continue for about 11 miles to the end at the Slavonia Trailhead parking area.</p>	<p><u>USE:</u> Very Heavy</p> <p><u>DIFFICULTY:</u> Moderate</p> <p><u>USGS MAP(S):</u> Mt. Zirkel Quad</p>
<p><u>ATTRACTIONS AND CONSIDERATIONS:</u> Gold Creek Lake, named in the late 1800's by an early explorer named Charles Franz, is a popular destination within the Mount Zirkel Wilderness. It offers a beautiful 8 acre lake thickly forested by fir and lodgepole. Heavily shaded, the trail winds through thick forest, passes some waterfalls, and follows Gold Creek most of the way to the lake. Due to the popularity and the easy accessibility of this trail to the lake, this area receives some of the highest use of any area in this wilderness. This trail is not recommended if you are seeking solitude. Overuse and abuse have led to implementing special regulations to protect fragile shoreline areas and to provide for solitude. Camping and campfires are prohibited within 1/4 mile of the lake. Stock use is permitted but NOT RECOMMENDED due to lack of available trailer parking or turnaround at the trailhead, and due to possible conflicts with very heavy hiker use. There are very few good legal sites for stock users to camp at the lake.</p>	
<p><u>NARRATIVE:</u> Begin your hike at Slavonia TH on Gilpin Trail #1161. After ¼ mile, the trail forks. The right fork is the start of Gold Creek Trail #1150. Follow it past the Wilderness boundary at 1 mile and reach Gold Creek Lake after about 3 miles. Just east of the lake is the intersection with the Wyoming Trail #1101. Continuing on #1150, you reach the second junction with Gilpin Trail #1161 at about 5 miles, and then the Red Dirt Pass Trail #1142 at approximately 6 miles. Follow #1150 as it continues to the top of Ute Pass.</p>	

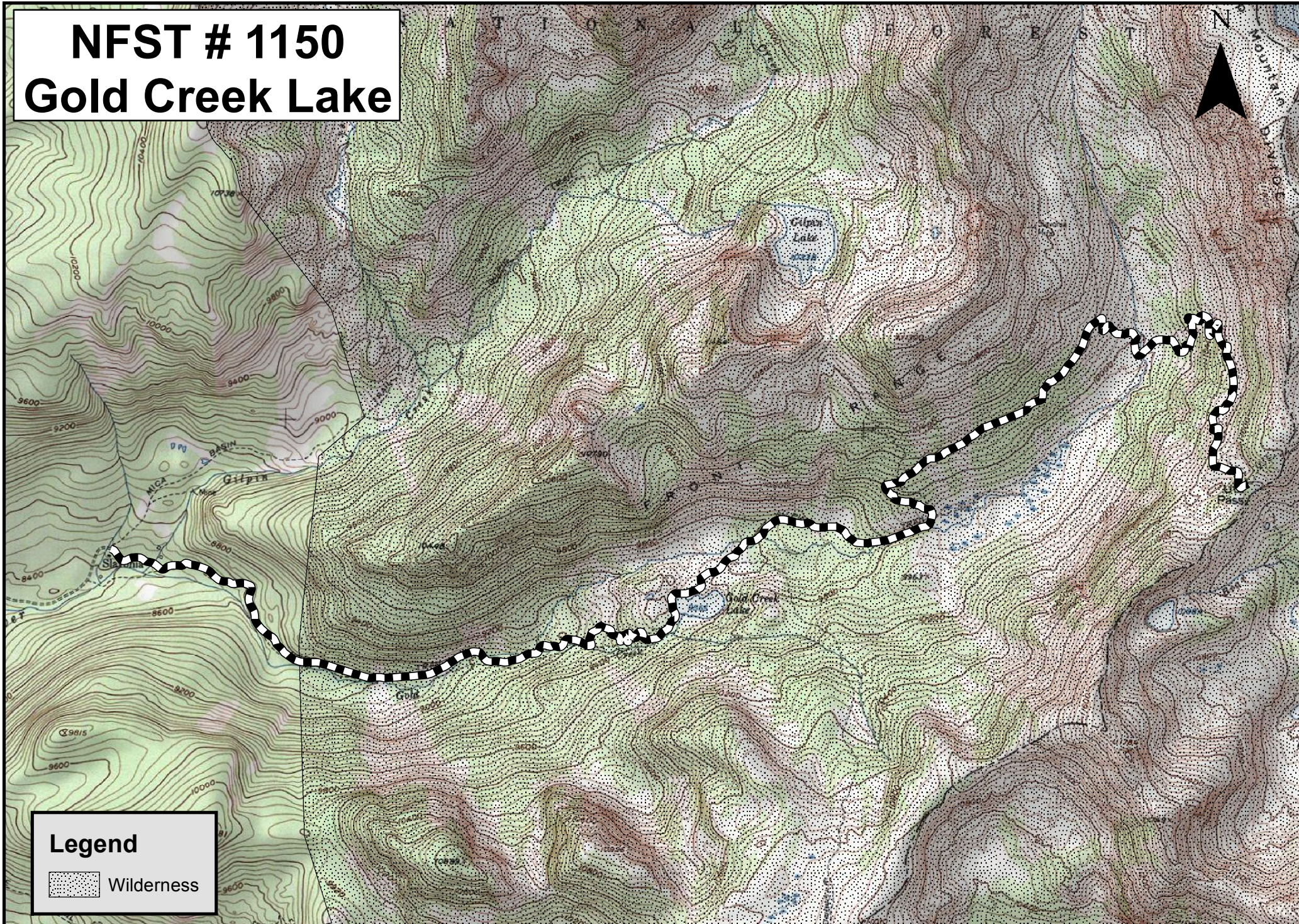
Last updated: January 2013
 925 Weiss Drive
 Steamboat Springs, CO 80487
 (970) 870-2299

Website address: www.fs.fed.us/r2/mbr/rd-hpbe

“The USDA Forest Service is an equal opportunity provider and employer.”

NFST # 1150

Gold Creek Lake



Legend

 Wilderness

THIS GUIDE IS NOT INTENDED TO TAKE THE PLACE OF MOUNTAINEERING SKILLS, COMPASS AND TOPO MAPS OF THE AREA.
USDA is an Equal Opportunity provider and employer. 2013

