



MEDICINE BOW-ROUTT NATIONAL FORESTS
 THUNDER BASIN NATIONAL GRASSLAND
 HAHNS PEAK-BEARS EARS RANGER DISTRICT

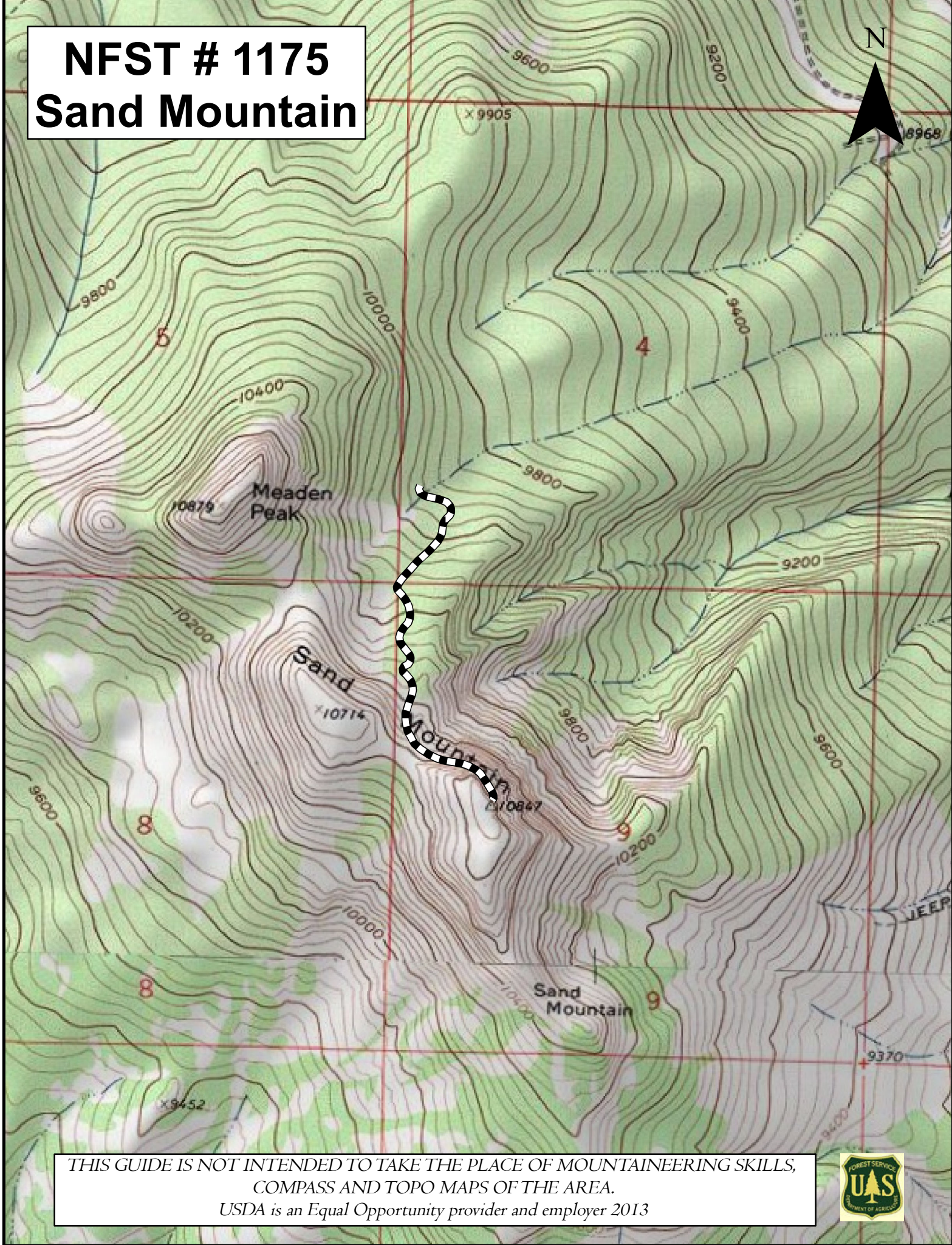
	<p><u>TRAIL NAME:</u> SAND MOUNTAIN #1175</p>
<p><u>TRAIL BEGINNING:</u> 9840' elevation (2999 m) at #1175 trailhead.</p> <p><u>TRAIL ENDING:</u> 10,847' elevation (3306 m) at the summit of Sand Mountain.</p>	<p><u>LENGTH:</u> 1.0 mi (1.6 km)</p> <p><u>RECOMMENDED SEASON:</u> Spring Summer Fall Winter</p>
<p><u>ACCESS:</u> At the west end of Steamboat go north at the intersection of US Hwy 40 and RCR 129 (Clark turnoff). Travel north for approximately 26 miles, just past the Steamboat Lake Headquarters and turn left on RCR 62. Drive just over 3 miles to the junction of NFSR 42, continue on this road for 5 miles. Turn left onto NFSR 480 then fork onto NFSR 480.A, continuing to the TH for #1175 about 0.5 miles. Switchback your way up to the very top of Sand Mountain, approximately 1 mile.</p>	<p><u>USE:</u> Moderate to High</p> <p><u>DIFFICULTY:</u> More Difficult</p> <p><u>USGS MAP(S):</u> Mad Creek</p>
<p><u>ATTRACTIONS AND CONSIDERATIONS:</u> Upon arriving at the summit of Sand Mountain you are treated to a spectacular 360° view of the Yampa Valley and neighboring mountain ranges. On clear days it is possible to see as far as Utah and Wyoming. Avoid the peak at all costs if any storms threaten, since lightning is always a serious and deadly threat atop the high peaks. If you park on NFSR 42 and hike up NFSR 480 and 480, the total mileage to the summit is about 3 miles, a relatively gentle incline up to the trailhead.</p> <p><u>NOTE:</u> For vehicles not equipped with 4WD and high clearance or in the event of wet road conditions, it is advisable to park your vehicle at the intersection of NFSR 42 and 480 (being careful not to block roadways).</p>	
<p><u>NARRATIVE:</u> This trail is a relatively short steep hike which takes the hiker through a mature spruce/fir forest. It is worth the effort for the breathtaking views that are afforded from the summit. Because it takes awhile to drive to the trailhead, be sure to get an early start and bring plenty of food and water. Be sure and bring a camera!</p>	

Last updated: January 2013
 925 Weiss Drive
 Steamboat Springs, CO 80487
 (970) 870-2299

Website address: www.fs.fed.us/r2/mbr/rd-hpbe

“The USDA Forest Service is an equal opportunity provider and employer.”

NFST # 1175 Sand Mountain



THIS GUIDE IS NOT INTENDED TO TAKE THE PLACE OF MOUNTAINEERING SKILLS,
COMPASS AND TOPO MAPS OF THE AREA.
USDA is an Equal Opportunity provider and employer 2013

