






MEDICINE BOW-ROUTT NATIONAL FORESTS  
 THUNDER BASIN NATIONAL GRASSLAND  
 HAHNS PEAK-BEARS EARS RANGER DISTRICT

  		<b><u>TRAIL NAME:</u> #1171 RED DIRT</b>	
<b><u>TRAIL BEGINNING:</u></b> 6800' elevation (2072 m) Elk River Road.		<b><u>LENGTH:</u></b> 6.3 mi ( 10.1km)	
<b><u>TRAIL ENDING:</u></b> 8400' elevation (2560 m) junction with Swamp Park Trail #1100.		<b><u>RECOMMENDED SEASON:</u></b> Spring   Summer   Fall	
<b><u>ACCESS:</u></b> Drive west of Steamboat on U.S. 40 approximately 2 miles. Turn north on County Road 129, Elk River Road. Travel about 7 miles to Red Dirt on right side of the road.		<b><u>USE:</u></b> Light to Moderate  <b><u>DIFFICULTY:</u></b> Moderate  <b><u>USGS MAP( S):</u></b> Mad Creek and Rocky Peak Quads.	
<b><u>ATTRACTIONS AND CONSIDERATIONS:</u></b> The grade on the trail is steadily up until it drops into the Mad Creek drainage. Hiking does become less difficult once the ridge top is reached. This trail is used extensively by hunters during the fall. Water is not available enroute. Hitch rail is provided for horses at TH. <b>PLEASE NOTE:</b> This trail is mechanized ONLY to the Wilderness boundary.			
<b><u>NARRATIVE:</u></b> This trail leaves the Elk River Road and immediately switchbacks up a brush covered hillside of the Elk River Valley. It passes through stands of aspen and lodgepole pine, and offers outstanding views of the Elk River Valley and Yampa Valley. The trail proceeds up the ridge between the Cabin and Mad Creeks. Neither creek is visible from the trail itself until the trail starts its descent into Mad Creek just past the Mt. Zirkel Wilderness boundary. At this point, excellent views of the rugged upper Mad Creek area are available. Connecting with Swamp Park Trail #1100, it offers the opportunity to continue north to Swamp Park or south down Mad Creek and return to Mad Creek Trailhead on the Elk River Road.			

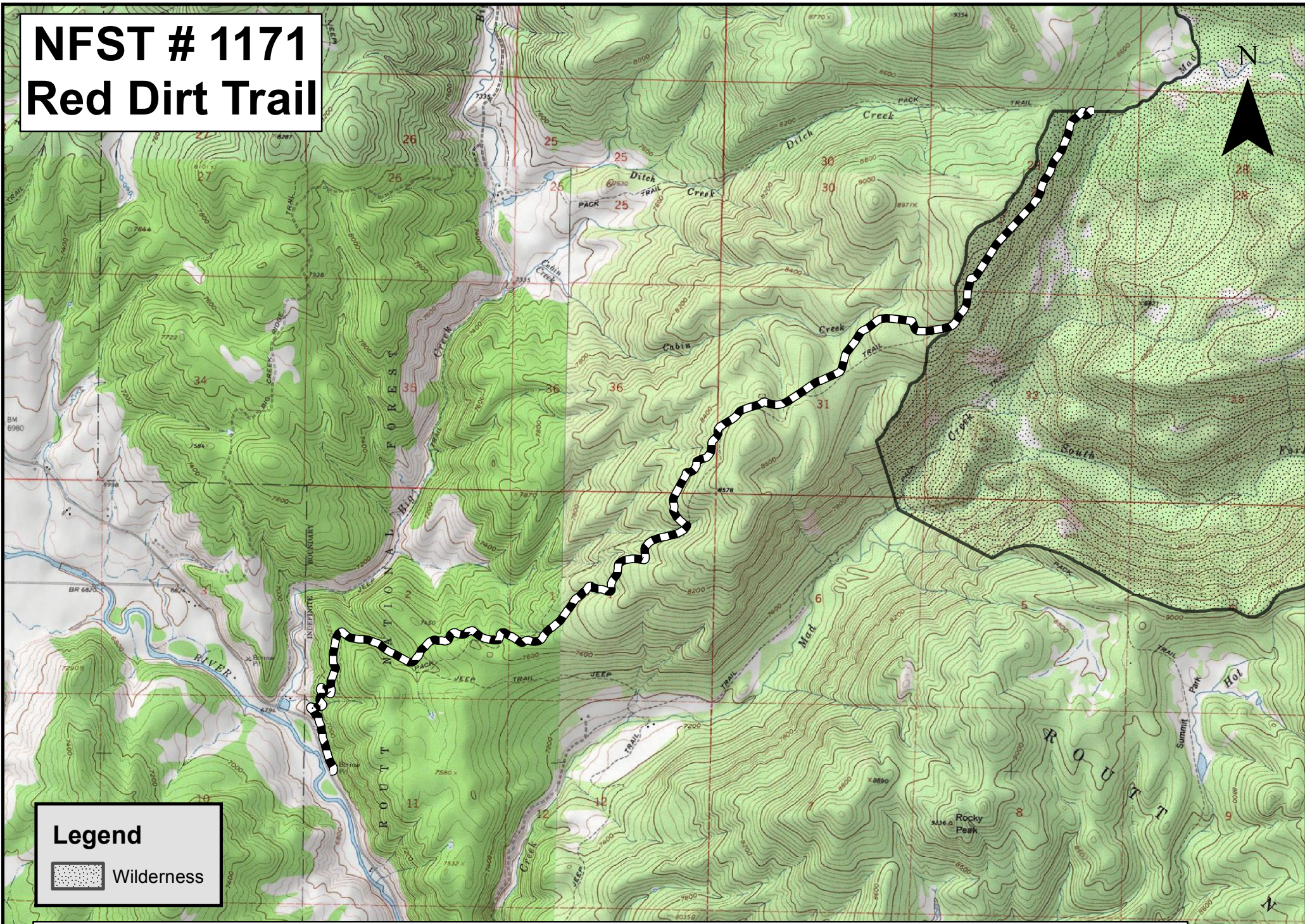
Last updated: January 2013  
 925 Weiss Drive  
 Steamboat Springs, CO 80487  
 (970) 870-2299

Website address: [www.fs.fed.us/r2/mbr/rd-hpbe](http://www.fs.fed.us/r2/mbr/rd-hpbe)

“The USDA Forest Service is an equal opportunity provider and employer.”



# NFST # 1171 Red Dirt Trail



## Legend

 Wilderness

THIS GUIDE IS NOT INTENDED TO TAKE THE PLACE OF MOUNTAINEERING SKILLS, COMPASS AND TOPO MAPS OF THE AREA.

USDA is an Equal Opportunity provider and employer. 2013

