



MEDICINE BOW-ROUTT NATIONAL FORESTS  
 THUNDER BASIN NATIONAL GRASSLAND  
 HAHNS PEAK-BEARS EARS RANGER DISTRICT

	<p><b><u>TRAIL NAME:</u> SPRING CREEK #1160</b></p>	
<p><b><u>TRAIL BEGINNING:</u></b> 6800' elevation (2072 m) Spring Creek Road.</p> <p><b><u>TRAIL ENDING:</u></b> 8000' elevation (2438 m) at Dry Lake Campground.</p>	<p><b><u>LENGTH:</u></b> 3.6 mi ( 5.8 km)</p> <p><b><u>RECOMMENDED SEASON:</u></b>  <u>Spring   Summer   Fall</u></p>	
<p><b><u>ACCESS:</u></b> From Lincoln Avenue, turn north on 3rd Street. Travel 2 blocks and turn right onto Pine Street. Pine Street turns into E. Maple Street, and then becomes a dirt and gravel drive and you are on a free parking road. Do not block other cars or the road.</p>	<p><b><u>USE:</u></b> Heavy</p> <p><b><u>DIFFICULTY:</u></b> Easy to Moderate</p> <p><b><u>USGS MAP(S):</u></b> Steamboat Springs Quad</p>	
<p><b><u>ATTRACTIONS AND CONSIDERATIONS:</u></b> This trail is within an area closure between 11/15-5/15 for wildlife protection. Being at a lower elevation this trail is usable early in the spring for walking, running, hiking and biking. Many use this trail with NFSR 60, Buffalo Pass Road, to complete a mountain bike loop. Be alert for heavy mountain biking. This is an easy hiking trail and it is enjoyed by many.</p>		
<p><b><u>NARRATIVE:</u></b> The Spring Creek Trail begins on a dirt road on the edge of town, following Spring Creek upstream. Just up the trail the user will encounter an educational pavilion and two small city reservoirs. The trail becomes a 4WD road and splits further up. Taking the trail on your right begins the #1160 trail. From the Spring Creek Road to the Forest Boundary you will travel 2.1 miles. Once you've entered the Routt National Forest, the trail winds 1.5 miles up to the Dry Lake Campground on the Buffalo Pass Road, NFSR 60.</p>		

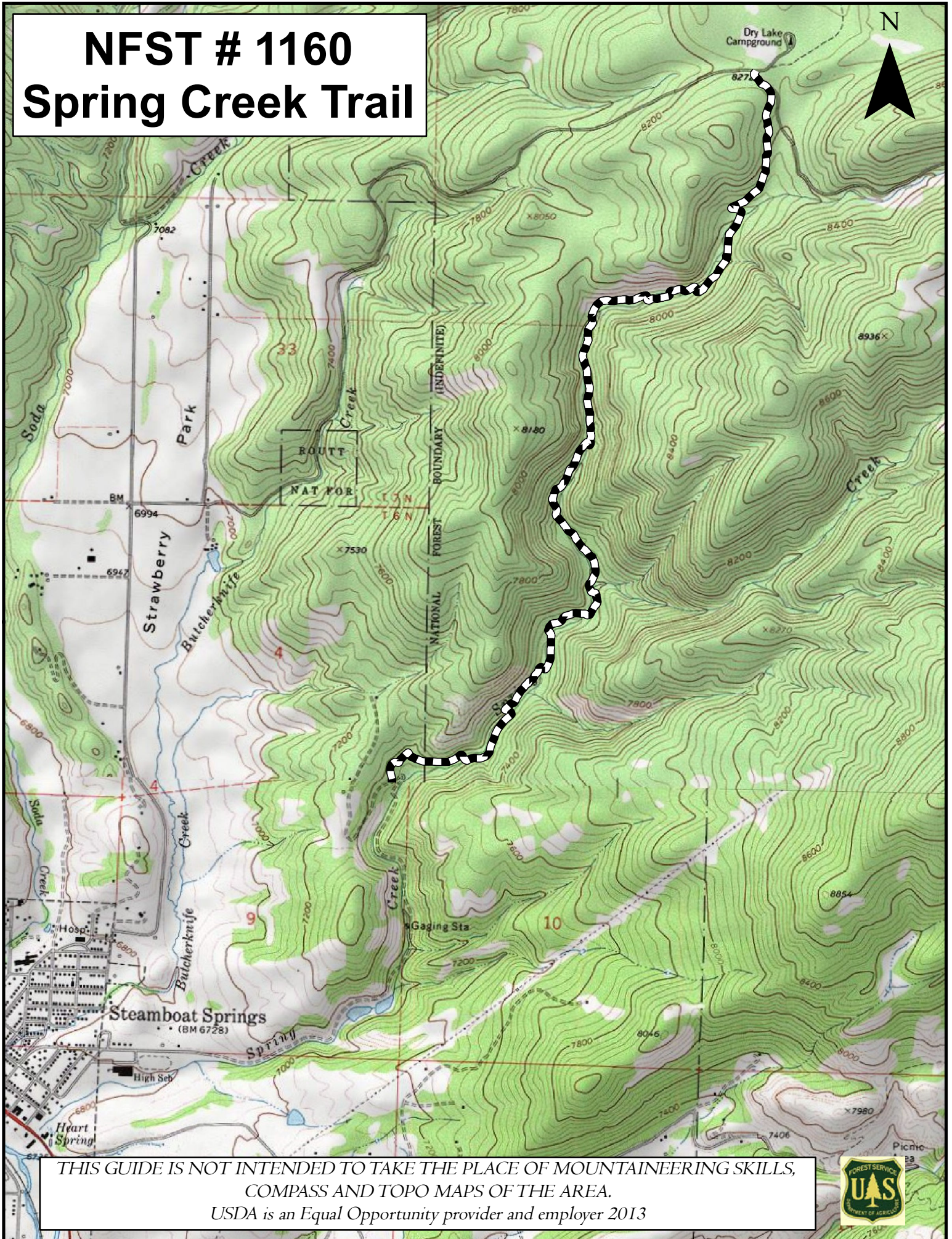
Last updated: January 2013  
 925 Weiss Drive  
 Steamboat Springs, CO 80487  
 (970) 870-2299

Website address: [www.fs.fed.us/r2/mbr/rd-hpbe](http://www.fs.fed.us/r2/mbr/rd-hpbe)

“The USDA Forest Service is an equal opportunity provider and employer.”



# NFST # 1160 Spring Creek Trail



THIS GUIDE IS NOT INTENDED TO TAKE THE PLACE OF MOUNTAINEERING SKILLS,  
COMPASS AND TOPO MAPS OF THE AREA.  
USDA is an Equal Opportunity provider and employer 2013

