



MEDICINE BOW-ROUTT NATIONAL FORESTS
 THUNDER BASIN NATIONAL GRASSLAND
 HAHNS PEAK-BEARS EARS RANGER DISTRICT

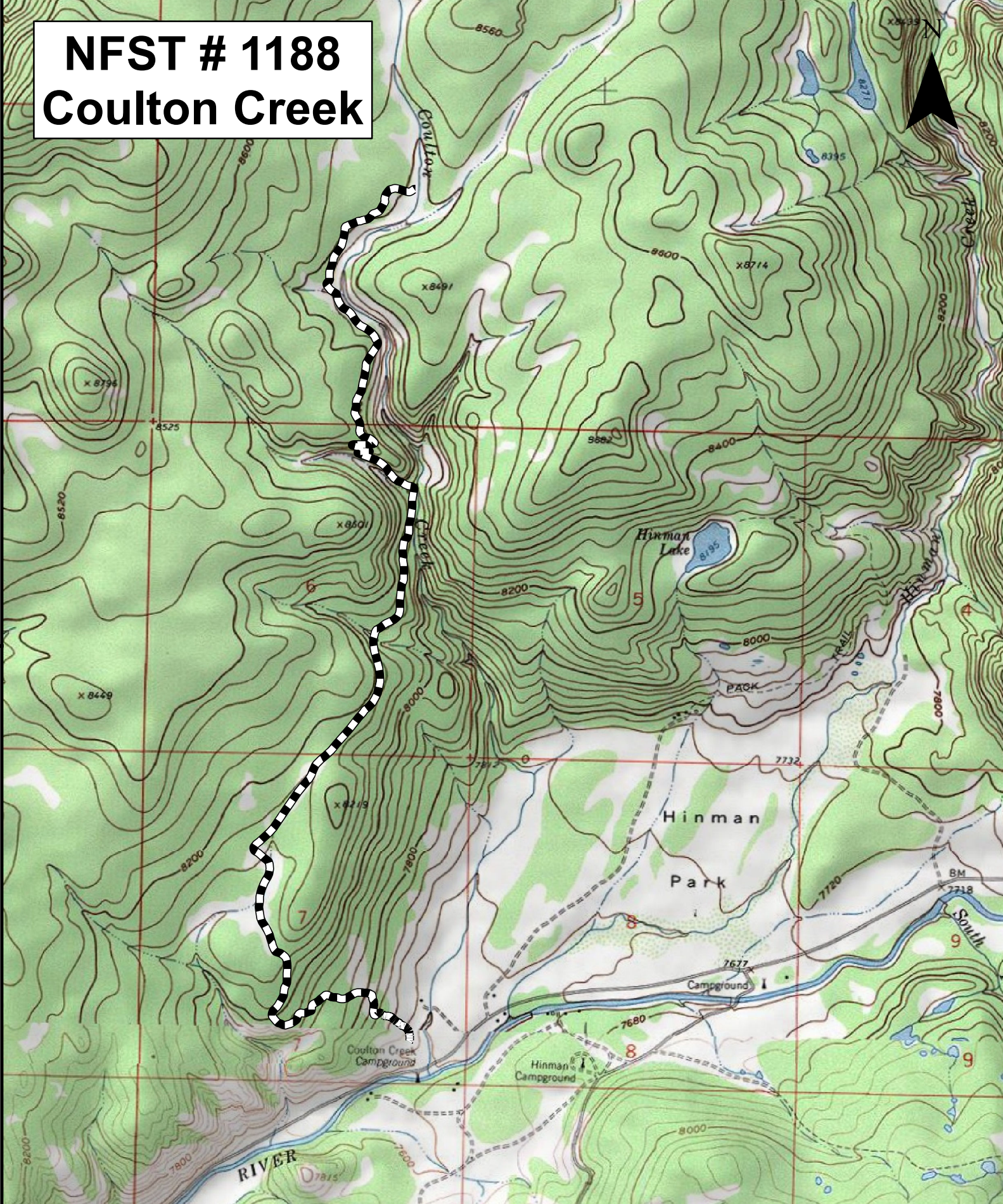
	<p><u>TRAIL NAME:</u> #1188 COULTON CREEK</p>	
<p><u>TRAIL BEGINNING:</u> 7600' elevation (2316m) NFSR 400.</p>	<p><u>LENGTH:</u> 3.9 mi. (6.3 km)</p>	
<p><u>TRAIL ENDING:</u> 8600' elevation (2621m) at dead end of trail.</p>	<p><u>RECOMMENDED SEASON:</u> <u>Spring Summer Fall</u></p>	
<p><u>ACCESS #1:</u> Take Hwy 40 west of Steamboat Springs about 2 miles and turn right on to County Road 129. Travel north about 18 miles to the Seedhouse Road (NFSR 400; also CR 64) and turn right. Continue for 4.5 miles to the #1188 sign. Turn left onto NFSR 429, travel 1/10th mile to the #1188 trailhead and park here.</p>	<p><u>USE:</u> Moderate to High</p>	<p><u>DIFFICULTY:</u> Easy</p>
<p><u>ATTRACTIONS AND CONSIDERATIONS:</u> The Coulton Creek Trail is accessible early in the season because of its lower elevation. The snow clears, but the trail does remain wet until later June. Solitude seekers will enjoy this moderate hike along with its views of the Elk River Valley, wildflower meadows and aspen groves. These groves of aspen are rewarding later with the change of season and the brilliance of fall colors. Expect moderate use of this trail during hunting seasons. Orange vests are advisable this time of year.</p>		
<p><u>NARRATIVE:</u> Coulton Creek Trail begins climbing through clear areas and into aspen groves providing the first views of the Elk River Valley. Hikers will continue to climb and level off and climb again coming to meadows. From the Cutover Trail #1188A junction, the #1188 trail is no longer maintained. It dead-ends after about 1 mile, at a hunter camp, at the base of Farwell Mt. This hike offers a popular 7.8 mile alternative loop that will take the hiker back to Seedhouse Road by following trail #1188, the Cutover Trail #1188A, crossing over to Hinman Creek Trail #1177 (turn right) and on back to Seedhouse Road. It is an additional 1.5 miles back to the #1188 trailhead on the road surface.</p>		

Last updated: January 2013
 925 Weiss Drive
 Steamboat Springs, CO 80487
 (970) 870-2299

Website address: www.fs.fed.us/r2/mbr/rd-hpbe

“The USDA Forest Service is an equal opportunity provider and employer.”

NFST # 1188 Coulton Creek



THIS GUIDE IS NOT INTENDED TO TAKE THE PLACE OF MOUNTAINEERING SKILLS,
COMPASS AND TOPO MAPS OF THE AREA.

USDA is an Equal Opportunity provider and employer 2013

