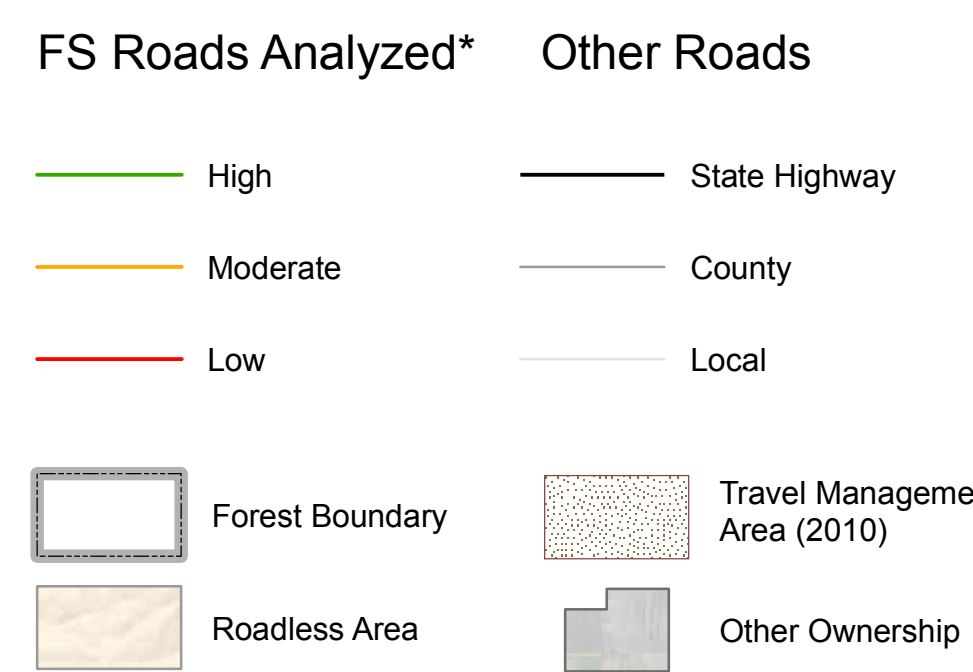


Travel Analysis Process

Lake Isabella Area
September 2014

Benefit Ranking by Road

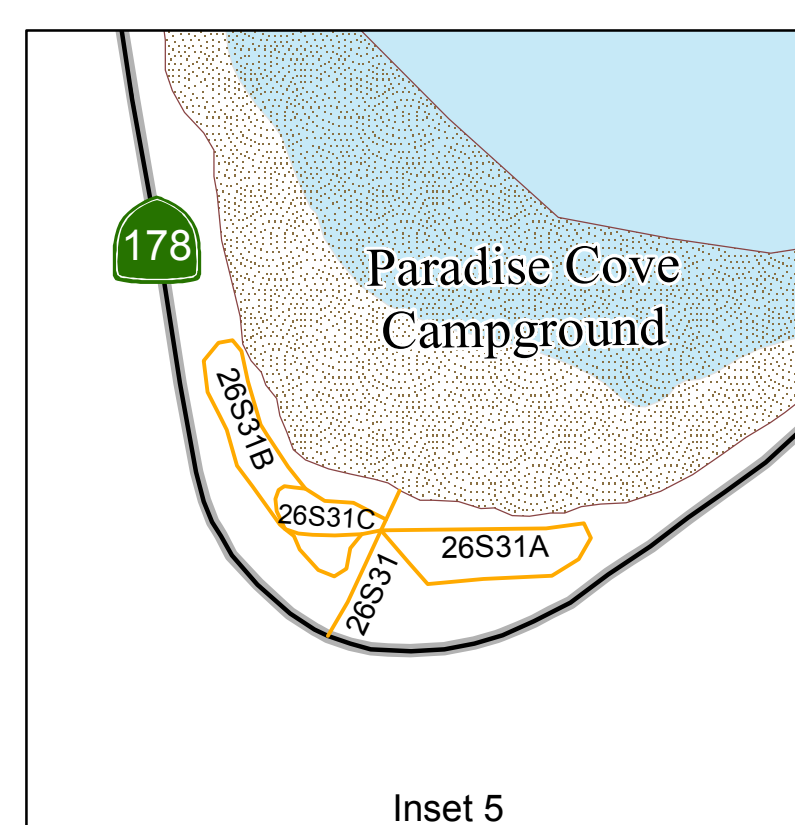
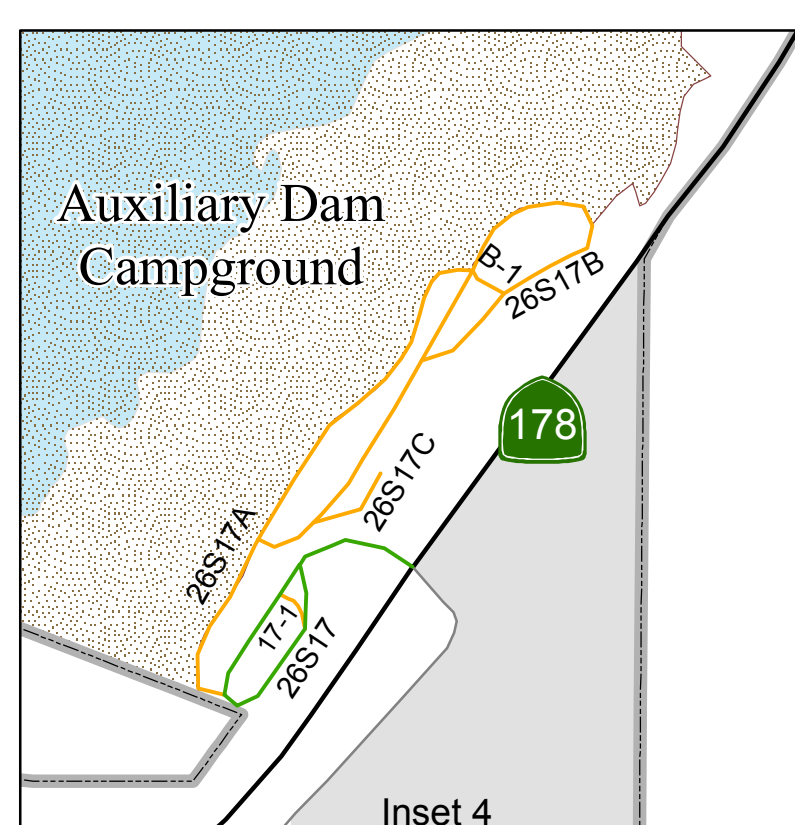
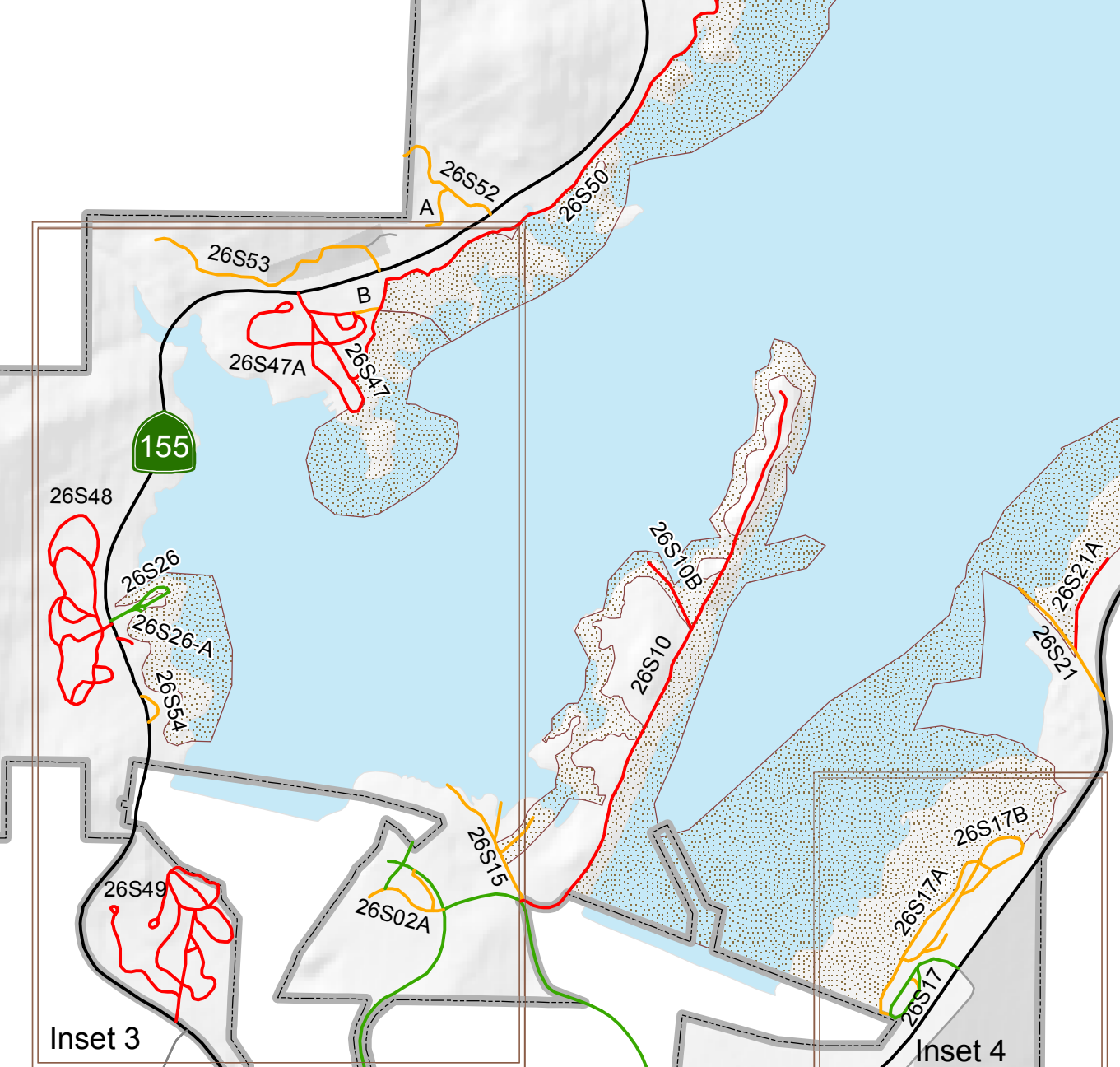
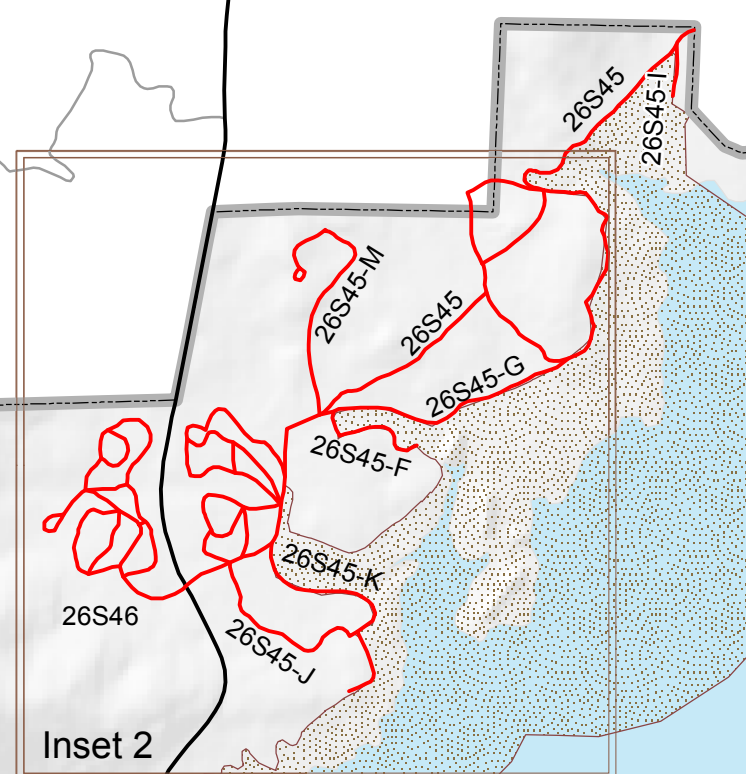
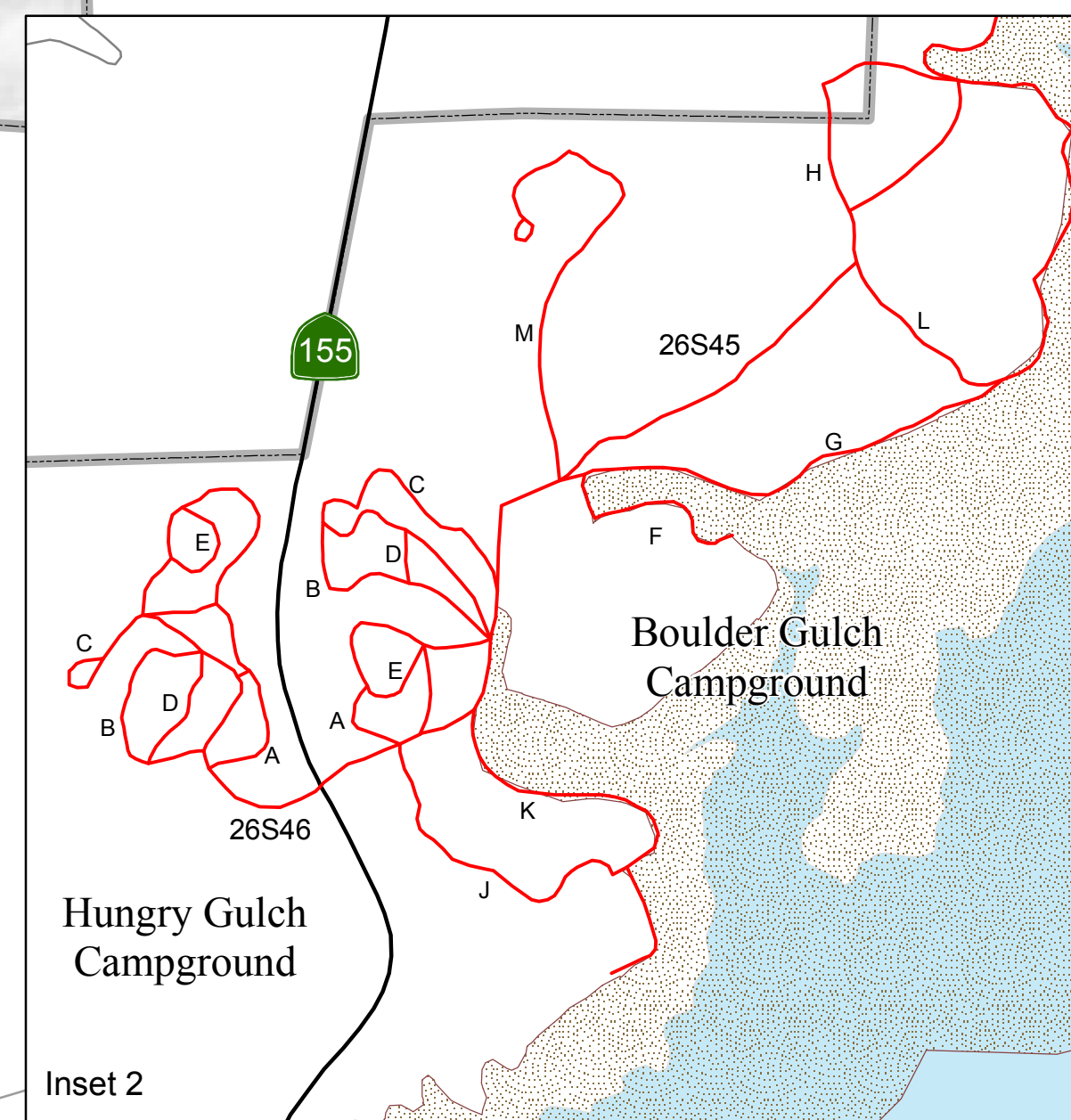
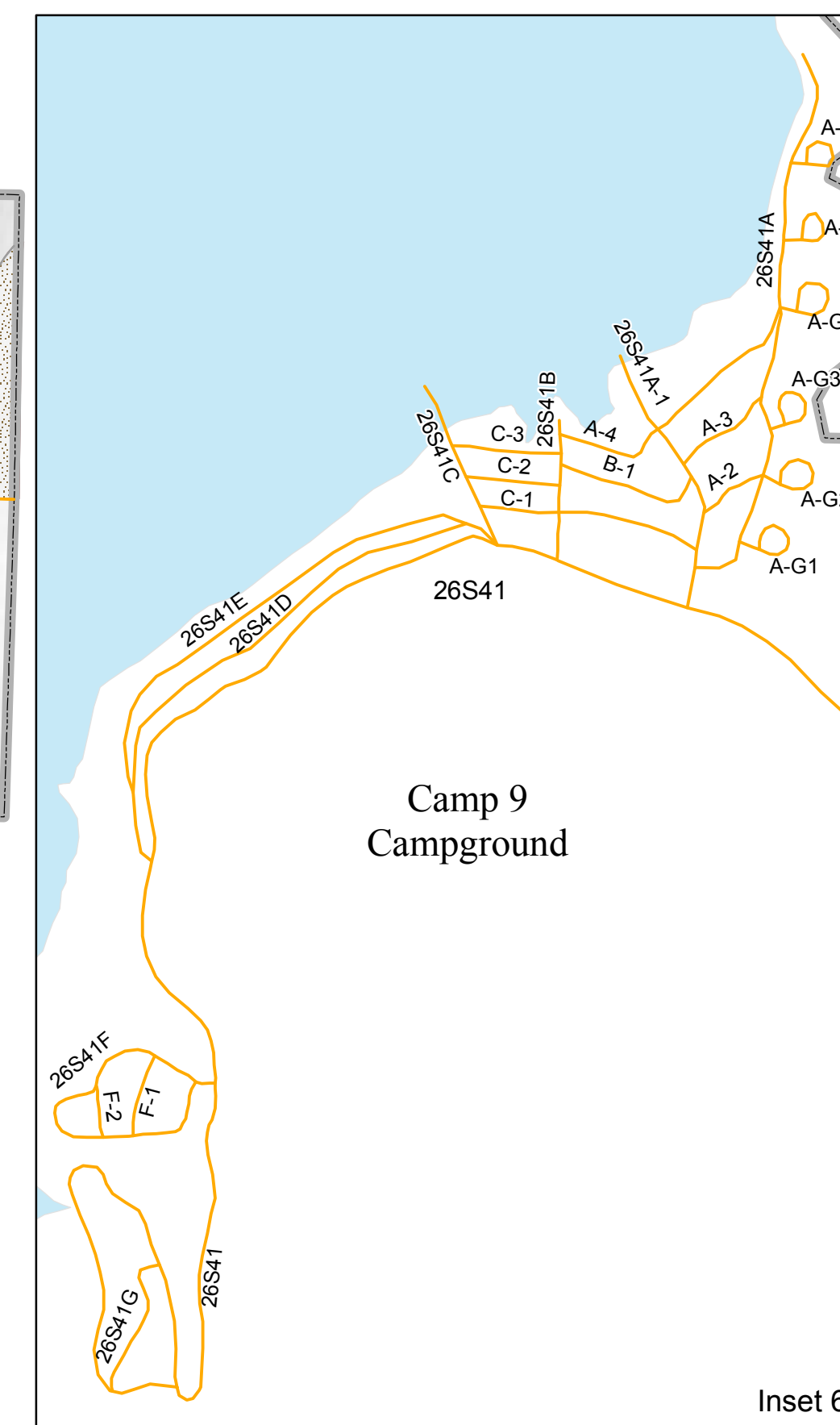
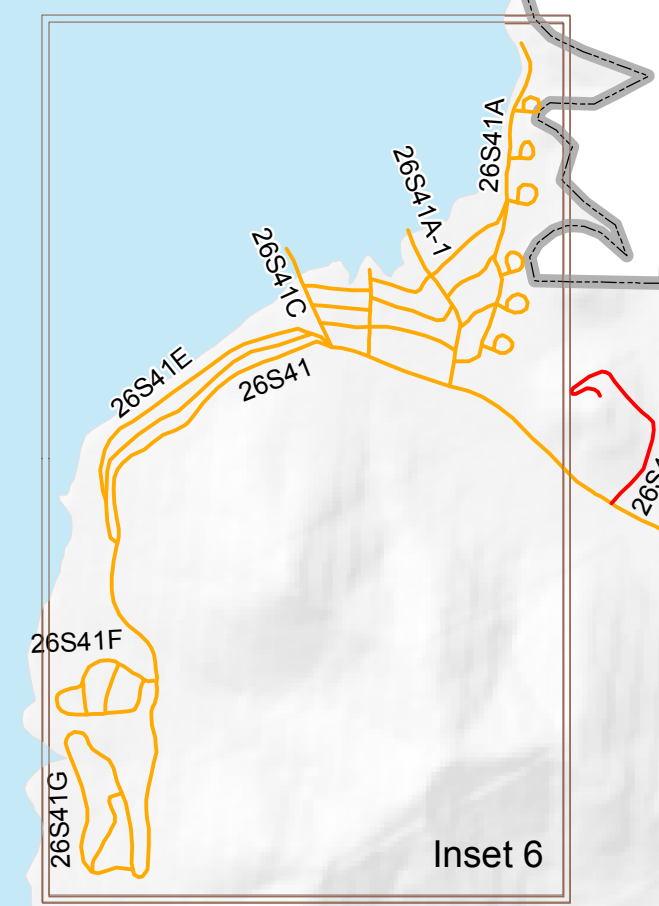
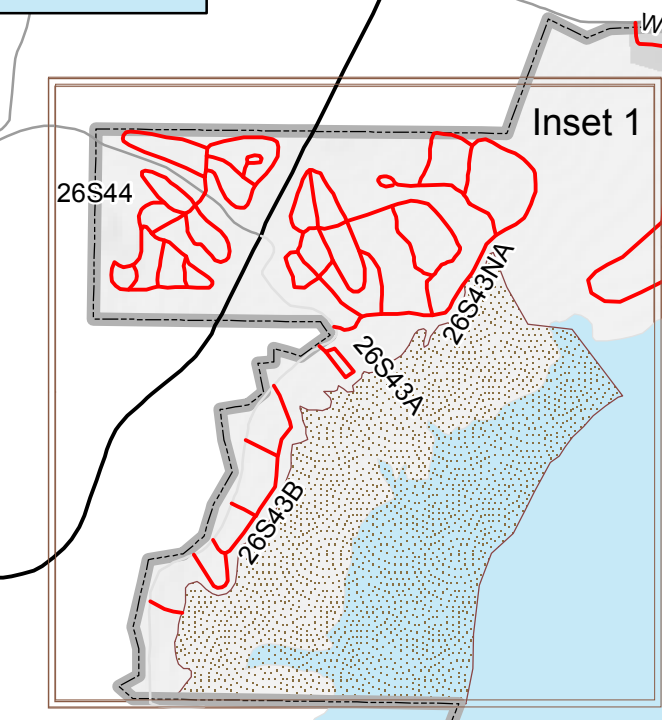
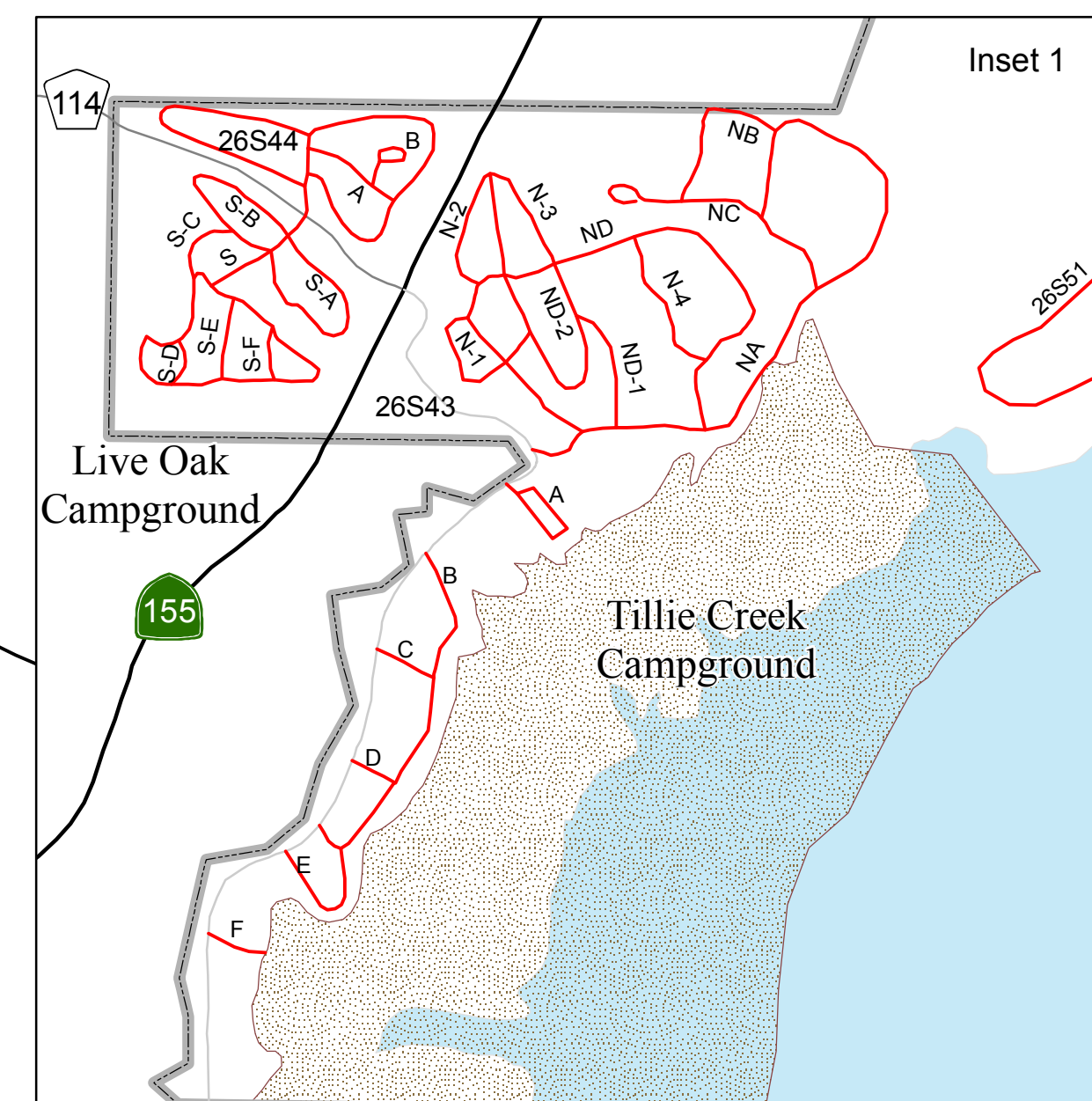


0 0.25 0.5 Miles

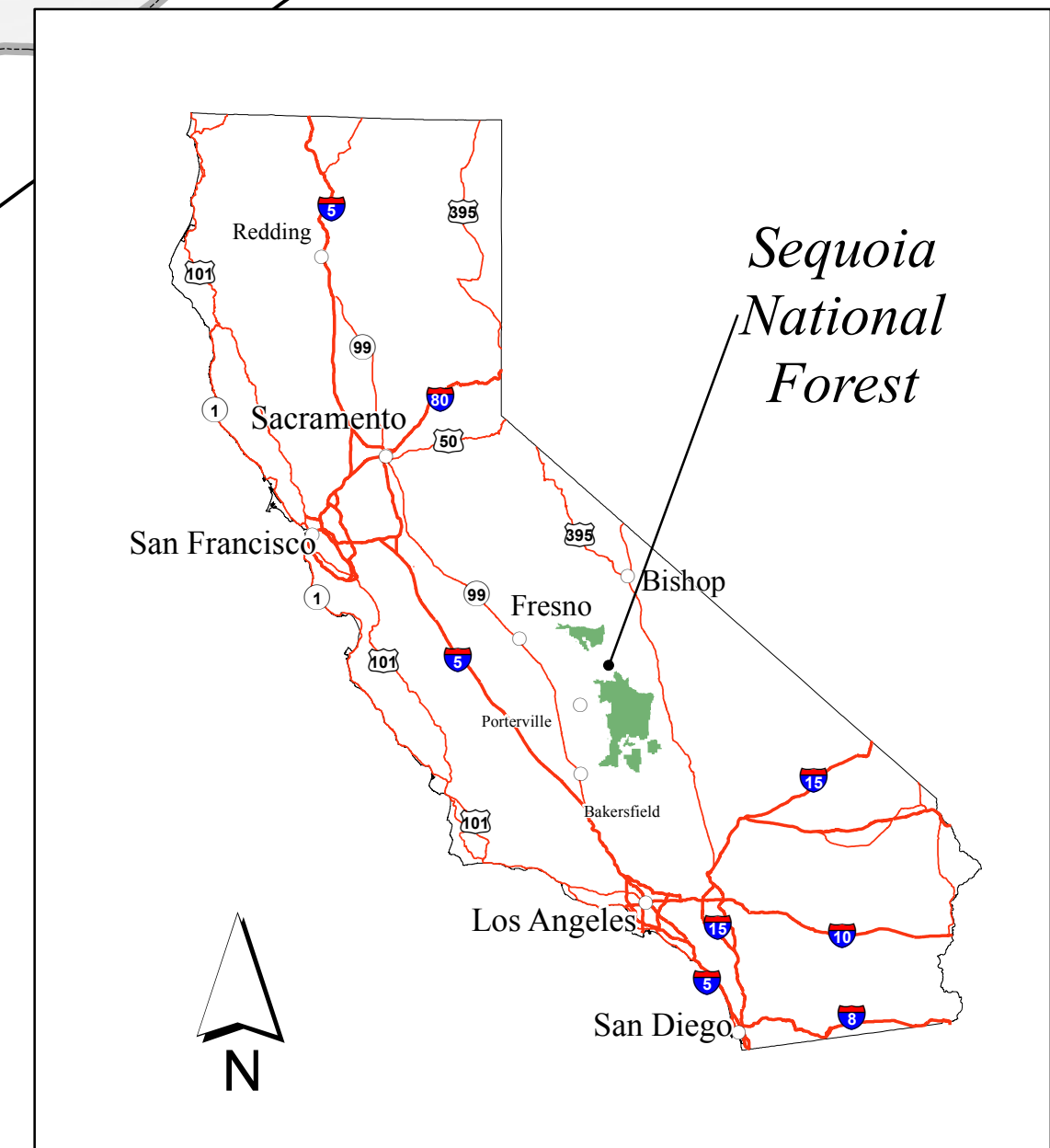
* see discussion of road benefit composite ranking in the Travel Analysis Report

Chico Roadless

Cannell Roadless



FS Road	Index Grid	FS Road	Index Grid	FS Road	Index Grid	FS Road	Index Grid
25541	B8, C8	26S34C	H10, H11, H12, I11	26S41G	F7	26S45-I	F5
25543	C8	26S34C-1	H10, I10	26S42	D8, D9	26S45-J	G4, G5
25544	C7	26S36	G12	26S42A	D8	26S45-K	G4, G5
25544A	C7	26S36A	G10, G11, G12, H11, H12	26S43A	E5	26S45-L	G5
25550	C8	26S36A-1	G10, G11	26S43B	E5	26S45-M	G4, G5
26S02	J3, J4	26S36B	G11, G12	26S43C	E5	26S46	G4
26S02A	J4	26S36C	G11, G12	26S43D	E5	26S46A	G4
26S02B	J4	26S36C-1	G11, G12	26S43E	E5	26S46B	G4
26S02C	J4	26S38	G10	26S43F	E5	26S46C	G4
26S02D	J4	26S39	F9, G9	26S43N-1	D5, E5	26S46D	G4
26S10	I4, I5, J4	26S40	J9	26S43N-2	D5, E5	26S46E	G4
26S10B	I4	26S40A	I10, J9, J10	26S43N-3	D5	26S47	H4, I4
26S15	I4, J4	26S40B	J8, J9	26S43N-4	D5, E5	26S47A	H3, H4
26S15A	I4, J4	26S40C	J8	26S43NA	D6, E5, E6	26S47B	H4
26S15B	I4	26S41	E7, E8, F7	26S43NB	D5, D6	26S47C	H4
26S17	J5	26S41-1	E7, E8	26S43NC	D5, D6	26S48	I3
26S17-1	J5	26S41A	E7	26S43ND	D5, D6, E5	26S48-A	I3
26S17A	J5	26S41A-1	E7	26S43ND-1	D5, E5	26S48-B	I3
26S17B	I5, J5	26S41A-2	E7	26S43ND-2	D5, E5	26S48-C	I3
26S17B-1	J5	26S41A-3	E7	26S44	D5	26S48-D	I3
26S17C	J5	26S41A-4	E7	26S44-A	D5	26S48-E	I3
26S21	I5	26S41A-G1	E7	26S44-B	D5	26S49	J3
26S21-A	I5	26S41A-G2	E7	26S44S	D5, E5	26S49A	J3
26S21A	I5	26S41A-G3	E7	26S44S-A	D5	26S49B	J3
26S22	H7	26S41A-G4	E7	26S44S-B	D5	26S49C	J3
26S22A	H7	26S41A-G5	E7	26S44S-C	D5	26S49D	J3
26S22B	H7	26S41A-G6	E7	26S44S-D	D5, E5	26S49E	J3
26S26	I3	26S41B	E7	26S44S-E	D5, E5	26S50	H4, I4
26S26-A	I3	26S41B-1	E7	26S44S-F	D5, E5	26S50A	H4, H5
26S31	I8	26S41C	E7	26S45	F5, G4, G5	26S50B	H4
26S31A	I8	26S41C-1	E7	26S45-A	G4	26S51	D6, E6
26S31B	I7, I8	26S41C-2	E7	26S45-B	G4	26S52	H4
26S31C	I7, I8	26S41C-3	E7	26S45-C	G4	26S52A	H4
26S32	I8	26S41D	E7	26S45-D	G4	26S53	H3, H4
26S32A	I8, I8, J9	26S41E	E7	26S45-E	G4	26S53A	H4
26S34	H12, I12, I13	26S41F	F6, F7	26S45-F	G5	26S54	I3
26S34A	I13	26S41F-1	F7	26S45-G	G5	W H Park	D6
26S34B	I10, I11, I12, I11	26S41F-2	F7	26S45-H	F5, G5		



SOURCE: USDF, Sequoia National Forest, 2013
DISCLAIMER: This product is reproduced from geospatial information prepared by the USDA Forest Service. GIS data and product accuracy may vary. Maps may be developed from sources of differing accuracy, accurate only at certain scales, based on modeling or interpretation, or incomplete while in the process of being revised or updated. Using GIS products for purposes other than those for which they were intended may yield inaccurate or misleading results. The Forest Service reserves the right to correct, update, modify, or replace GIS products without notification.