

# Okanogan-Wenatchee National Forest

## WOODCUTTING MAP

### Chelan, Entiat, Wenatchee River & Cle Elum Ranger Districts

This map is being distributed to all who purchase woodcutting permits for the Chelan, Entiat, Wenatchee River and Cle Elum Ranger Districts to show where wood removal is allowed. It does not apply to the Naches, Methow Valley or Tonasket Ranger Districts. The permit does not authorize firewood cutting on private or state land, shown in white on the map.

Also, some small sites such as campgrounds and administrative study sites, are closed to woodcutting within the large areas which are shown as open to wood collection.

There may be some limited exceptions to the information shown on this map. For example, in a few cases, woodcutting may be permitted within the closed area. Check with the local ranger district office for any exceptions.

As we learn more about the needs of wildlife species, there are likely to be further changes in the Okanogan-Wenatchee National Forest firewood program. We recognize the importance of this program to the public. Our goal will be to continue the program while providing proper protection to the national forest.

Your comments and suggestions for meeting these objectives are always welcome. Feel free to share them with your local District Ranger or mail them to:

Okanogan-Wenatchee National Forest,  
215 Melody Lane, Wenatchee, WA 98801

Thank you for your cooperation.

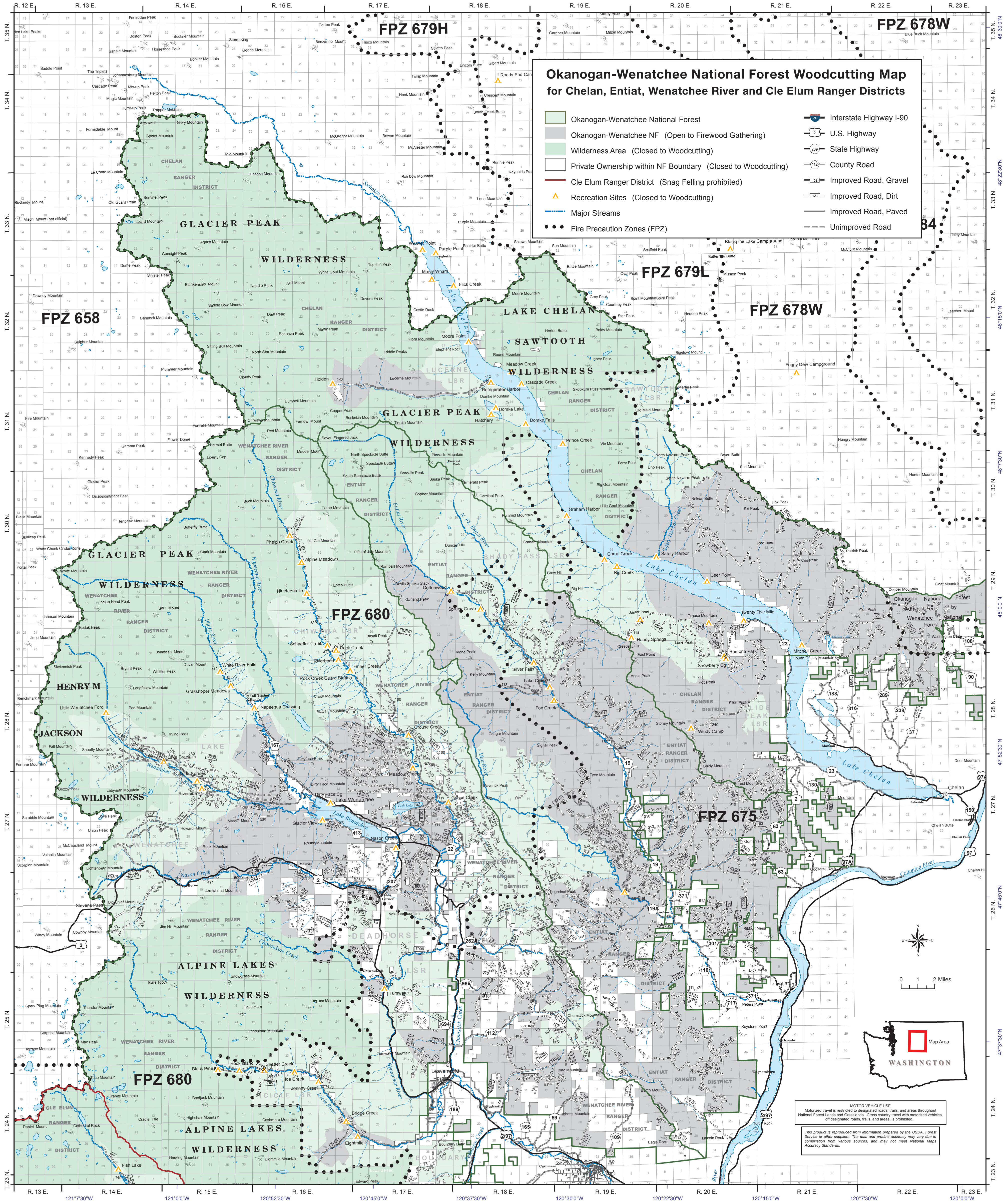
Forest Supervisor  
Okanogan-Wenatchee National Forest

### FIREWOOD REMOVAL CONDITIONS

Upon receiving and signing your permit, you are agreeing to the conditions listed on this map and those listed in the FOREST PRODUCTS REMOVAL PERMIT. Please read them carefully.

- A) Load tickets must be validated (by cutting out the month and date of removal), and attached to the load before moving the vehicle from the cutting site. One validated load ticket must be attached to the back of the load and made clearly visible for:
  - 1) each 1/2 (half) cord of wood, or
  - 2) any portion thereof. A standard pickup without sideboards, loaded level with the top of the sides, will hold about a half cord of wood.
- B) This permit is for dead wood, with the following exceptions:
  - 1) No cutting is permitted of any trees within a Timber Sale.
  - 2) No cutting or removal of snags or down logs marked with paint, plastic ribbon, and/or signs.
  - 3) No cutting or removal of snags with bird cavities (holes), nests, broken tops, or wildlife signs.
  - 4) No cutting of windthrown green trees without written approval from a Forest Officer.
  - 5) No cutting or removal of firewood within 300 feet of streams, lakes, ponds, or wet areas.
  - 6) Firewood must not be transported in lengths exceeding 8 feet.
  - 7) Snag felling is prohibited on the Cle Elum Ranger District.
  - 8) Snag felling is restricted on the Entiat Ranger District to standing dead trees not larger than 20 inches in diameter (includes the bark, measured one foot above the ground).
  - 9) Additional special restrictions may be applied by a Forest Officer.
- C) Campers may use up to 1/4 (one-quarter) cord of firewood per day, for each campsite, without needing to get a stub. Removal of firewood in a campground is not allowed. Unused firewood must be left in the campground when you leave. The same woodcutting rules apply.
- D) It is not legal to cut live Western Larch (tamarack) which shed their needles in the late fall and winter and appear to be dead.
- E) Possession and/or transportation of cedar is restricted under RCW 76.48.070.
- F) The use of specialized loading and skidding equipment, such as a tractor, rubber tired skidder, or large truck with self-loader, is not allowed without written approval from a Forest Officer.

See other side for information about Industrial Fire Precaution Levels in the Okanogan-Wenatchee National Forest



MOTOR VEHICLE USE  
Motorized travel is restricted to designated roads, trails, and areas throughout National Forest Lands and Grasslands. Cross country travel with motorized vehicles, off designated roads, trails, and areas, is prohibited.

This product is reproduced from information prepared by the USDA, Forest Service or other agencies. The date and product accuracy may vary due to compilation from various sources, and may not meet National Maps Accuracy Standards.



# Okanogan-Wenatchee National Forest WOODCUTTING MAP

Chelan, Entiat, Wenatchee River & Cle Elum Ranger Districts

## FIREWOOD REMOVAL CONDITIONS

Upon receiving and signing your permit, you are agreeing to the conditions listed on this map and those listed in the FOREST PRODUCTS REMOVAL PERMIT. Please read them carefully.

- A) Load tickets must be validated (by cutting out the month and date of removal), and attached to the load before moving the vehicle from the cutting site. One validated load ticket must be attached to the back of the load and made clearly visible for:**
  - 1) each 1/2 (half) cord of wood, or
  - 2) any portion thereof. A standard pickup without sideboards, loaded level with the top of the sides, will hold about a half cord of wood.
- B) This permit is for dead wood, with the following exceptions:**
  - 1) No cutting is permitted of any trees within a Timber Sale.
  - 2) No cutting or removal of snags or down logs marked with paint, plastic ribbon, and/or signs.
  - 3) No cutting or removal of snags with bird cavities (holes), nests, broken tops, or wildlife signs.
  - 4) No cutting of windthrown green trees without written approval from a Forest Officer.
  - 5) No cutting or removal of firewood within 300 feet of streams, lakes, ponds, or wet areas.
  - 6) Firewood must not be transported in lengths exceeding 8 feet.
  - 7) Snag felling is prohibited on the Cle Elum Ranger District.
  - 8) Snag felling is restricted on the Entiat Ranger District to standing dead trees not larger than 20 inches in diameter (includes the bark, measured one foot above the ground).
  - 9) Additional special restrictions may be applied by a Forest Officer.
- C) Campers may use up to 1/4 cord (one-quarter) of firewood per day, for each campsite, without needing to get a stub. Removal of firewood in a campground is not allowed. Unused firewood must be left in the campground when you leave. The same woodcutting rules apply.**
- D) It is not legal to cut live Western Larch (tamarack) which shed their needles in the late fall and winter and appear to be dead.**
- E) Possession and/or transportation of cedar is restricted under RCW 76.48.070.**
- F) The use of specialized loading and skidding equipment, such as a tractor, rubber tired skidder, or large truck with self-loader, is not allowed without written approval from a Forest Officer.**

## For More Information Contact:

Offices are normally open weekdays 8 am to 4:30 pm

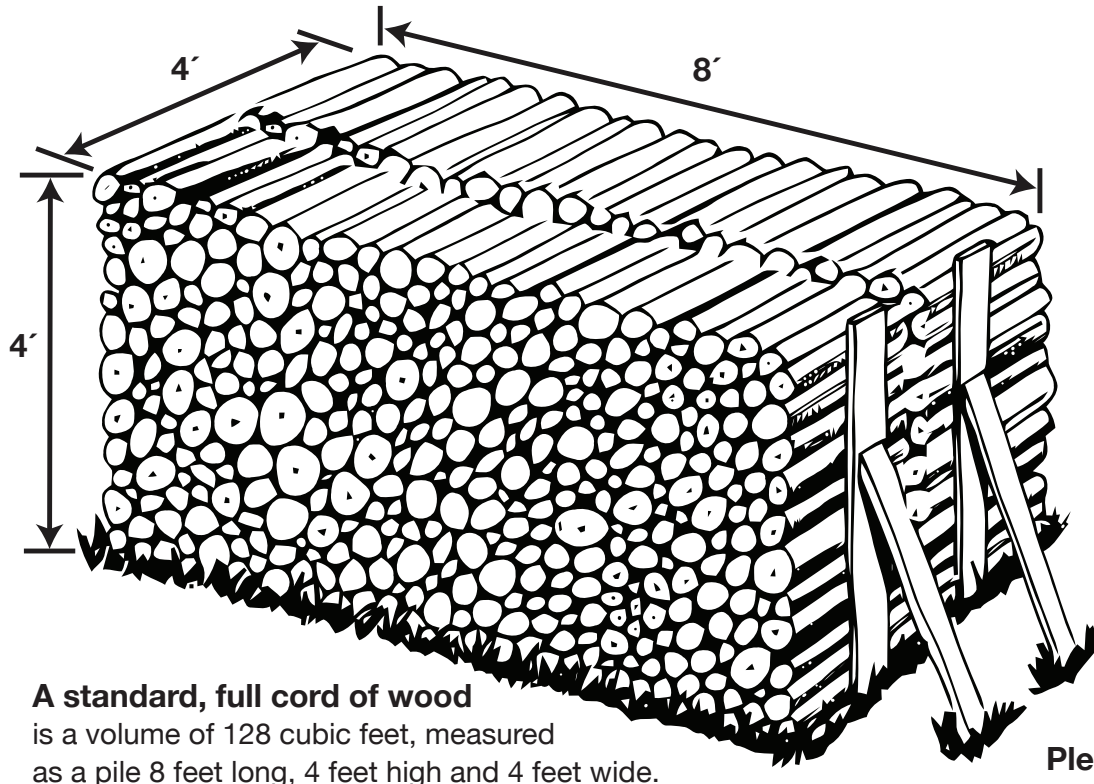
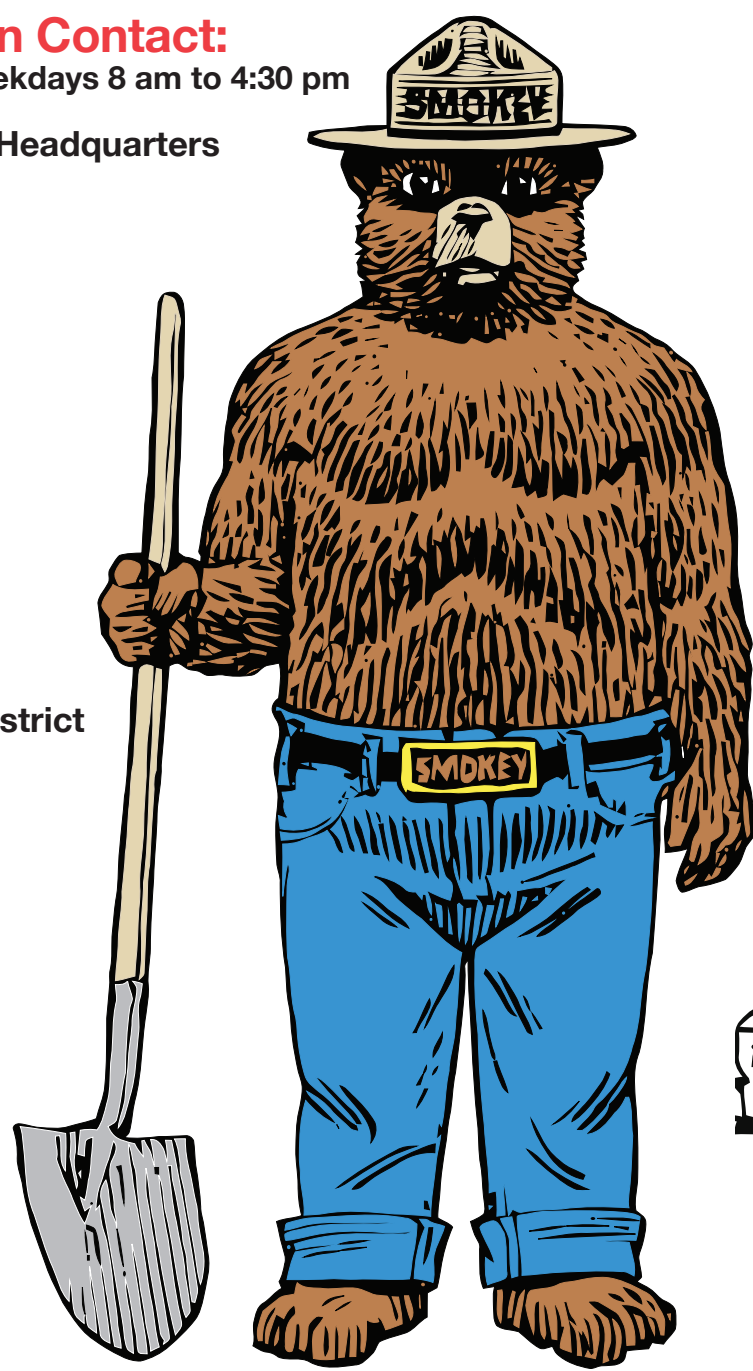
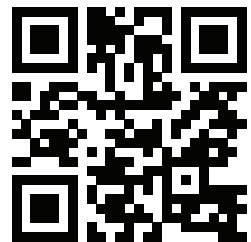
Okanogan-Wenatchee N.F. Headquarters  
215 Melody Lane  
Wenatchee, WA 98801  
509-664-9200

Chelan Ranger District  
428 W. Woodin Ave  
Chelan, WA 98816  
509-682-4900

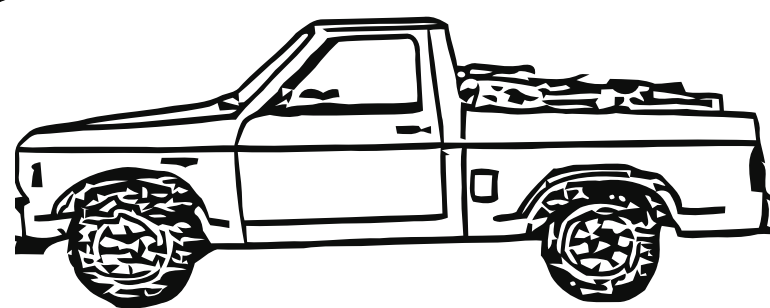
Entiat Ranger District  
2108 Entiat Way  
Entiat, WA 98822  
509-784-4700

Wenatchee River Ranger District  
600 Sherbourne  
Leavenworth, WA 98926  
509-548-2550

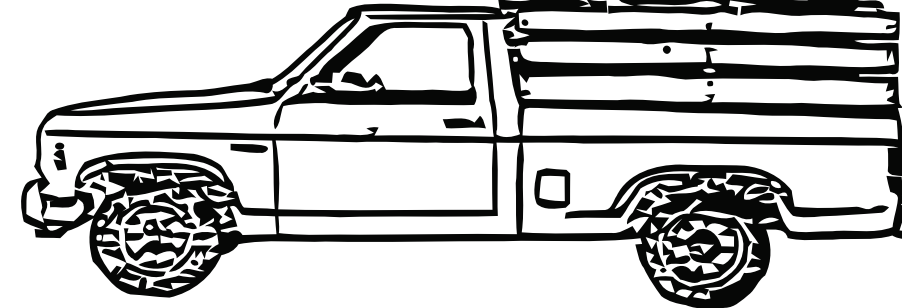
Cle Elum Ranger District  
803 West 2nd Street  
Cle Elum, WA 98922  
509-852-1100



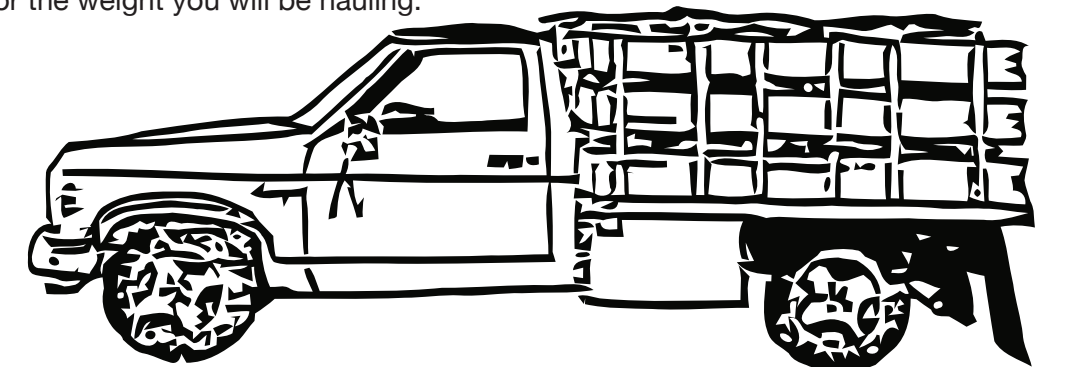
**A standard, full cord of wood** is a volume of 128 cubic feet, measured as a pile 8 feet long, 4 feet high and 4 feet wide. A full cord can weigh up to 5,000 pounds.



**Short Bed Pickup – 1/2 ton**  
With or without racks this truck bed holds approximately 1/2 (half) cord of wood. One load ticket required.



**Long Bed Pickup – 1/2 or 3/4 ton**  
Without racks this truck bed holds approximately 1/2 (half) cord of wood. One load ticket required.



**Standard Truck – 1 ton**  
With high racks this truck bed holds approximately 1 1/2 (one and a half) cords of wood. Three load tickets required.

## General Information About Industrial Fire Precaution Levels (IFPL) in the Okanogan-Wenatchee National Forest

A **Level I** IFPL allows woodcutters to cut wood all day long in areas that are normally open to woodcutting in the Okanogan-Wenatchee National Forest. Following equipment shut down, a one-hour fire watch must be maintained.

A **Level II** IFPL means that firewood cutters and industrial operators are restricted to morning hours of operation only, and must shut down chainsaws and other equipment by 1 pm. Following equipment shut down, a one-hour fire watch must be maintained.

When the IFPL reaches **Level III**, all woodcutting activity is prohibited.

There are **two zones** that divide the Okanogan-Wenatchee Forest into geographical regions where there are differences in elevation, vegetation, and weather patterns that influence the level of fire danger present at any given time during fire season.

**Zone 675** encompasses mainly lower elevation lands and is bounded on the east by the Columbia River. Its western boundary runs south from the Okanogan-Wenatchee National Forest boundary through the Yakama Nation Reservation to the Kllickit County line, approximately through the center of the Okanogan-Wenatchee National Forest and Yakama Nation Reservation.

**Zone 680** includes upper elevation areas of the forest and is bounded on the west by the Cascade Crest and on the east by Zone 675.

Okanogan-Wenatchee National Forest personal-use woodcutting permit holders should check with the local ranger station to obtain the current IFPL for their chosen woodcutting site before heading to the forest. Woodcutters are also reminded to carefully read and adhere to the conditions of their personal-use woodcutting permit, and to pay special attention to the fire safety equipment requirements (right):

The following equipment is required at the cutting site while using a power saw:

**SAW:** Exhaust system in good repair with a screen-type spark arrestor of 0.023" or less and qualified under USDA Forest Service Standards.

**SHOVEL:** A long-handled round point with an 8 inch blade (size "O") in possession of the operator.

**FIRE EXTINGUISHER:** A pressurized chemical extinguisher of not less than 8 oz. capacity by weight and in possession of the operator.

Woodcutters and recreationists are encouraged to stay in contact with Forest Service offices during fire season in order to obtain current information on fire danger and any restrictions on activities that may be in effect.

## Industrial Fire Precaution Level Precautions and Restrictions\*

Level	I	II	III	IV	Precautions / Restrictions
	●	●			Carry equipment listed above
	●	●			Stay in area for one hour after power saw is shut off to watch for fire starts
			●		Shut down power saws at 1:00 p.m.
			●	●	All woodcutting activity prohibited

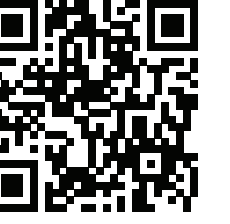
\*Applies to woodcutting, logging, and other activities using motorized equipment.

For current Fire Precaution Levels, call:

1-800-527-3305

or website:

<https://fortress.wa.gov/dnr/protection/IFPL>



## Firewood Load Stub

Validate the load stub by punching out the month and day you are getting the wood. Load stubs issued under this firewood removal guide are valid only on the Chelan, Entiat, Wenatchee River & Cle Elum Ranger Districts

8	9	10	11	12	13	14	15	16	17	18	19	20	21	22	23	24	25	26	28	29	30	31													
Completely remove the day and month on each load tag as required by your permit or contract.																																			
0000000																																			
JAN		FEB		MAR		APR		MAY		JUN		JUL		AUG		OCT		NOV		DEC		1		2		3		4		5		6		7	

## Tag Your Firewood

Before leaving each site, you must attach the appropriate number of validated load stubs to the back of the load where it can be easily seen. Attach one stub for each 1/2 (half) cord you are hauling. Amounts less than 1/2 cord still require one stub.

Please note that trucks may be overloaded when filled with wood. Check the owner's manual for your vehicle to see what load weights the truck can safely haul and make sure your vehicle is licensed for the weight you will be hauling.

Website: [fs.usda.gov/okawen](https://fs.usda.gov/okawen)

