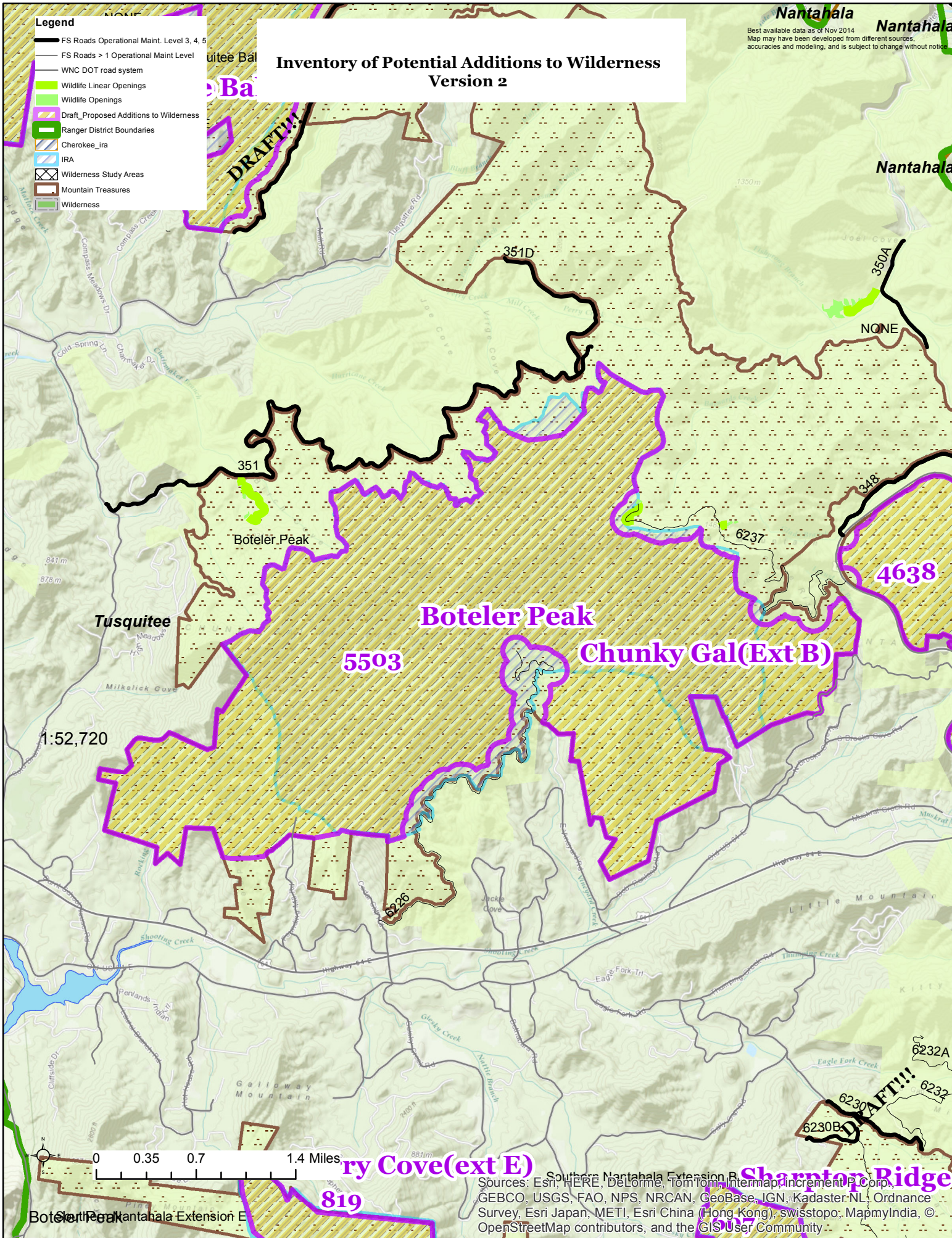


Inventory of Potential Additions to Wilderness Version 2

- Legend**
- FS Roads Operational Maint. Level 3, 4, 5
 - FS Roads > 1 Operational Maint Level
 - WNC DOT road system
 - Wildlife Linear Openings
 - Wildlife Openings
 - Draft_Proposed Additions to Wilderness
 - Ranger District Boundaries
 - Cherokee_ira
 - IRA
 - Wilderness Study Areas
 - Mountain Treasures
 - Wilderness



Boteler Peak

Chunky Gal(Ext B)

5503

4638

819

ry Cove(ext E)

Sharptop Ridge

Sources: Esri, HERE, DeLorme, TomTom, Intermap, increment P Corp., GEBCO, USGS, FAO, NPS, NRCAN, GeoBase, IGN, Kadaster NL, Ordnance Survey, Esri Japan, METI, Esri China (Hong Kong), swisstopo, MapmyIndia, © OpenStreetMap contributors, and the GIS User Community

Legend

- FS Roads Operational Maint. Level 3, 4, 5
- FS Roads > 1 Operational Maint Level
- WNC DOT road system
- Wildlife Linear Openings
- Wildlife Openings
- Draft_Proposed Additions to Wilderness
- Ranger District Boundaries
- Cherokee_ira
- IRA
- Wilderness Study Areas
- Mountain Treasures
- Wilderness

**Inventory of Potential Additions to Wilderness
Version 2**

Best available data as of Nov 2014
Map may have been developed from different sources,
accuracies and modeling, and is subject to change without notice

DRAFT!!!

Bald River Gorge Wilderness

**Cantrell Top
3062**

**7837
Unicoi Mountains #1**

Unicoi Mtns / Upper Bald River

Tusquitee

1:47,060

0 0.325 0.65 1.3 Miles

Sources: Esri, HERE, DeLorme, TomTom, Intermap, increment P Corp.,
GEBCO, USGS, FAO, NPS, NRCAN, GeoBase, IGN, Kadaster NL, Ordnance
Survey, Esri Japan, METI, Esri China (Hong Kong), swisstopo, MapmyIndia, ©
OpenStreetMap contributors, and the GIS User Community

Cantrell Top

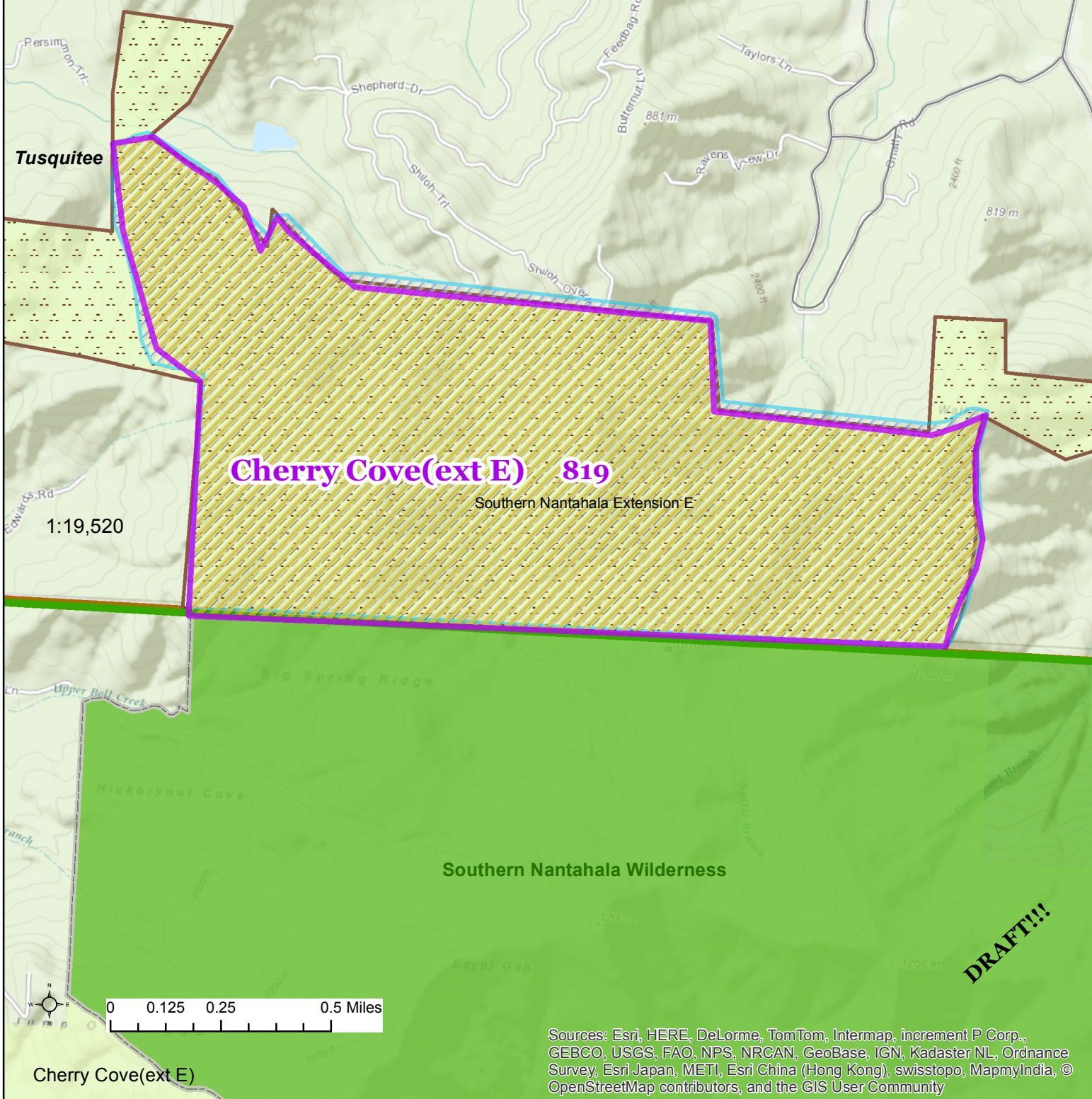
DRAFT!!!

Inventory of Potential Additions to Wilderness Version 2

Best available data as of Nov 2014
Map may have been developed from different sources, accuracies and modeling, and is subject to change without notice

- Legend**
- FS Roads Operational Maint. Level 3, 4, 5
 - FS Roads > 1 Operational Maint Level
 - WNC DOT road system
 - Wildlife Linear Openings
 - Wildlife Openings
 - Draft_Proposed Additions to Wilderness
 - Ranger District Boundaries
 - Cherokee_ira
 - IRA
 - Wilderness Study Areas
 - Mountain Treasures
 - Wilderness

DRAFT!!!



DRAFT!!!

Sources: Esri, HERE, DeLorme, TomTom, Intermap, increment P Corp., GEBCO, USGS, FAO, NPS, NRCAN, GeoBase, IGN, Kadaster NL, Ordnance Survey, Esri Japan, METI, Esri China (Hong Kong), swisstopo, MapmyIndia, © OpenStreetMap contributors, and the GIS User Community

Cherry Cove(ext E)

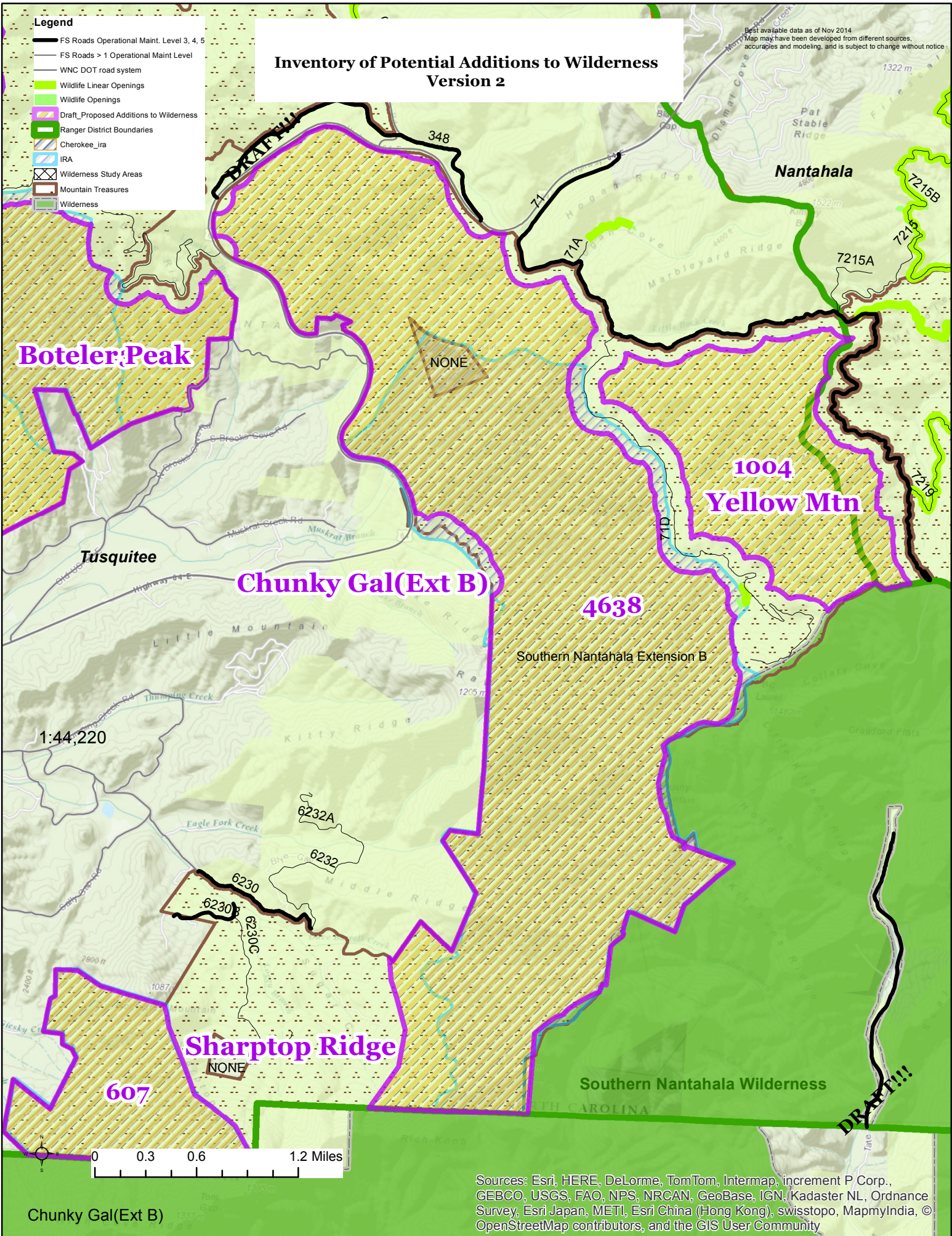
1:19,520

Best available data as of Nov 2014
Map may have been developed from different sources,
accuracies and modeling, and is subject to change without notice

Inventory of Potential Additions to Wilderness Version 2

Legend

- FS Roads Operational Maint. Level 3, 4, 5
- FS Roads > 1 Operational Maint Level
- WNC DOT road system
- Wildlife Linear Openings
- Wildlife Openings
- Draft_Proposed Additions to Wilderness
- Ranger District Boundaries
- Cherokee_ira
- IRA
- Wilderness Study Areas
- Mountain Treasures
- Wilderness



Boteler Peak

**1004
Yellow Mtn**

Chunky Gal(Ext B)

Sharp top Ridge

607

4638

Chunky Gal(Ext B)

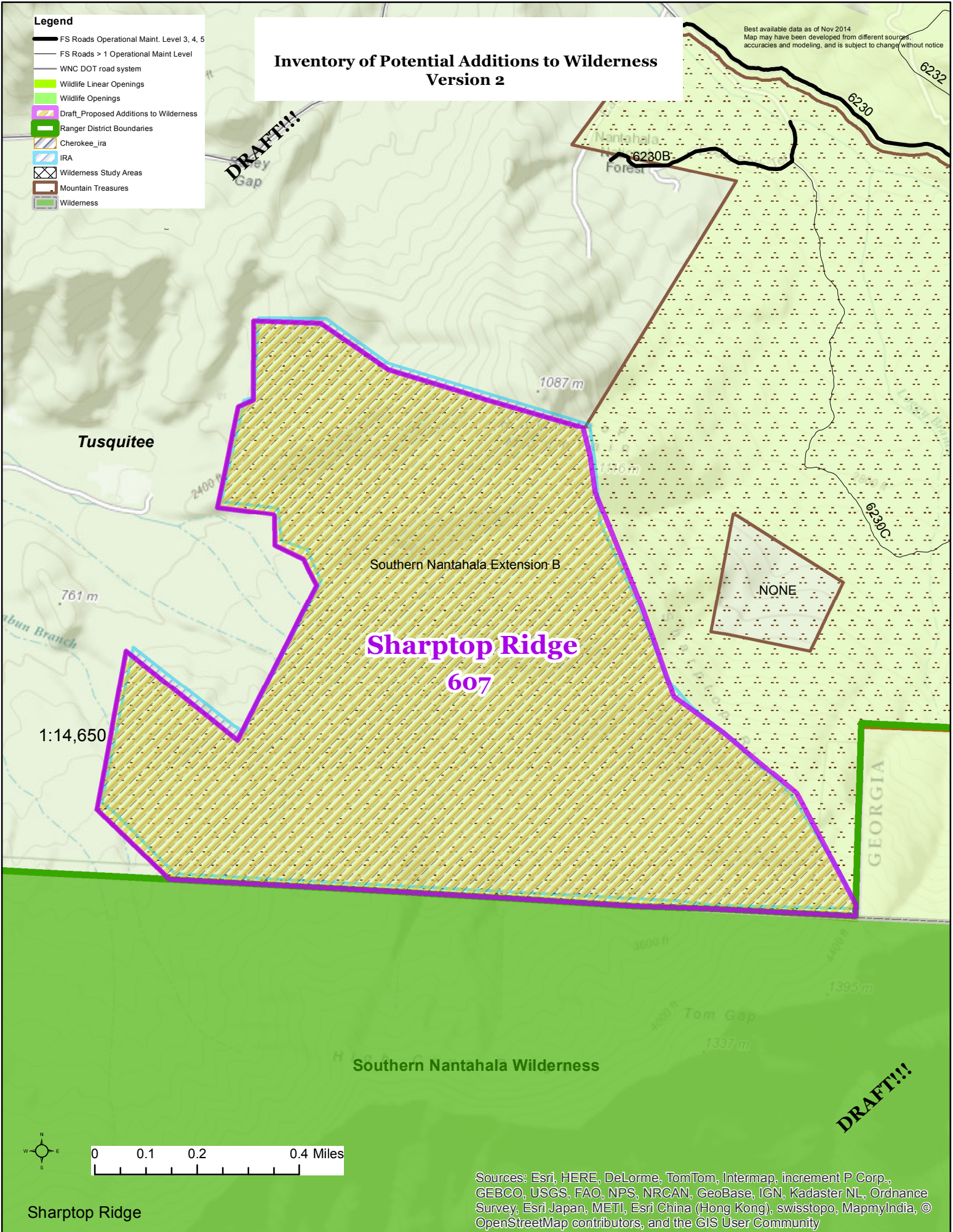
Sources: Esri, HERE, DeLorme, TomTom, Intermap, increment P Corp., GEBCO, USGS, FAO, NPS, NRCAN, GeoBase, IGN, Kadaster NL, Ordnance Survey, Esri Japan, METI, Esri China (Hong Kong), swisstopo, MapmyIndia, © OpenStreetMap contributors, and the GIS User Community

Legend

- FS Roads Operational Maint. Level 3, 4, 5
- FS Roads > 1 Operational Maint Level
- WNC DOT road system
- Wildlife Linear Openings
- Wildlife Openings
- Draft_Proposed Additions to Wilderness
- Ranger District Boundaries
- Cherokee_ira
- IRA
- Wilderness Study Areas
- Mountain Treasures
- Wilderness

Inventory of Potential Additions to Wilderness Version 2

Best available data as of Nov 2014
Map may have been developed from different sources,
accuracies and modeling, and is subject to change without notice



Tusquitee

Southern Nantahala Extension B

Sharptop Ridge
607

NONE

GEORGIA

Southern Nantahala Wilderness



Sharptop Ridge

Sources: Esri, HERE, DeLorme, TomTom, Intermap, increment P Corp., GEBCO, USGS, FAO, NPS, NRCAN, GeoBase, IGN, Kadaster NL, Ordnance Survey, Esri Japan, METI, Esri China (Hong Kong), swisstopo, MapmyIndia, © OpenStreetMap contributors, and the GIS User Community

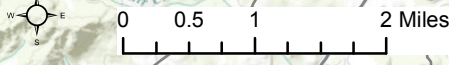
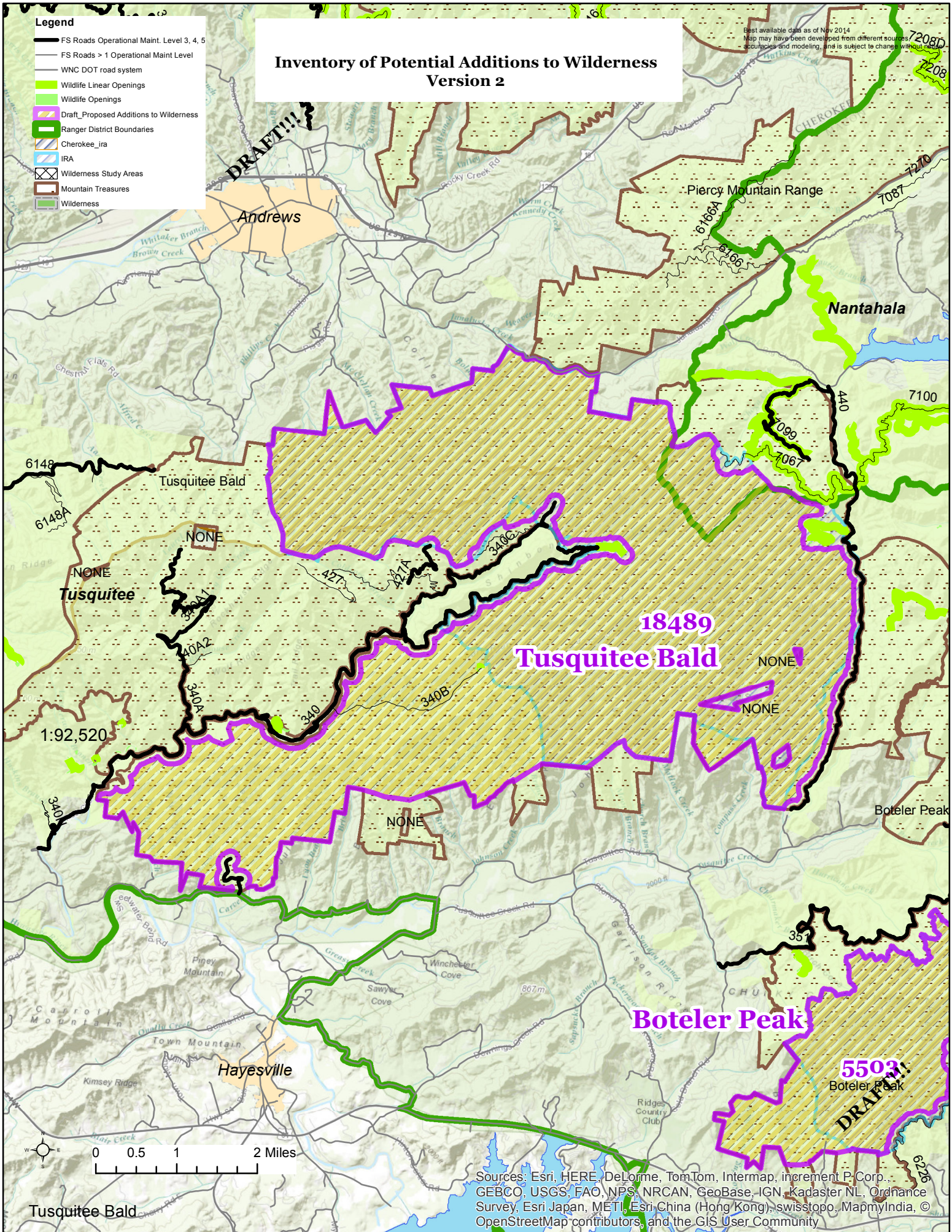
Inventory of Potential Additions to Wilderness Version 2

- Legend**
- FS Roads Operational Maint. Level 3, 4, 5
 - FS Roads > 1 Operational Maint Level
 - WNC DOT road system
 - Wildlife Linear Openings
 - Wildlife Openings
 - Draft_Proposed Additions to Wilderness
 - Ranger District Boundaries
 - Cherokee_ira
 - IRA
 - Wilderness Study Areas
 - Mountain Treasures
 - Wilderness

Best available data as of Nov 2014
Map may have been developed from different sources, scales and modeling, and is subject to change without notice.

DRAFT!!!

DRAFT!!!



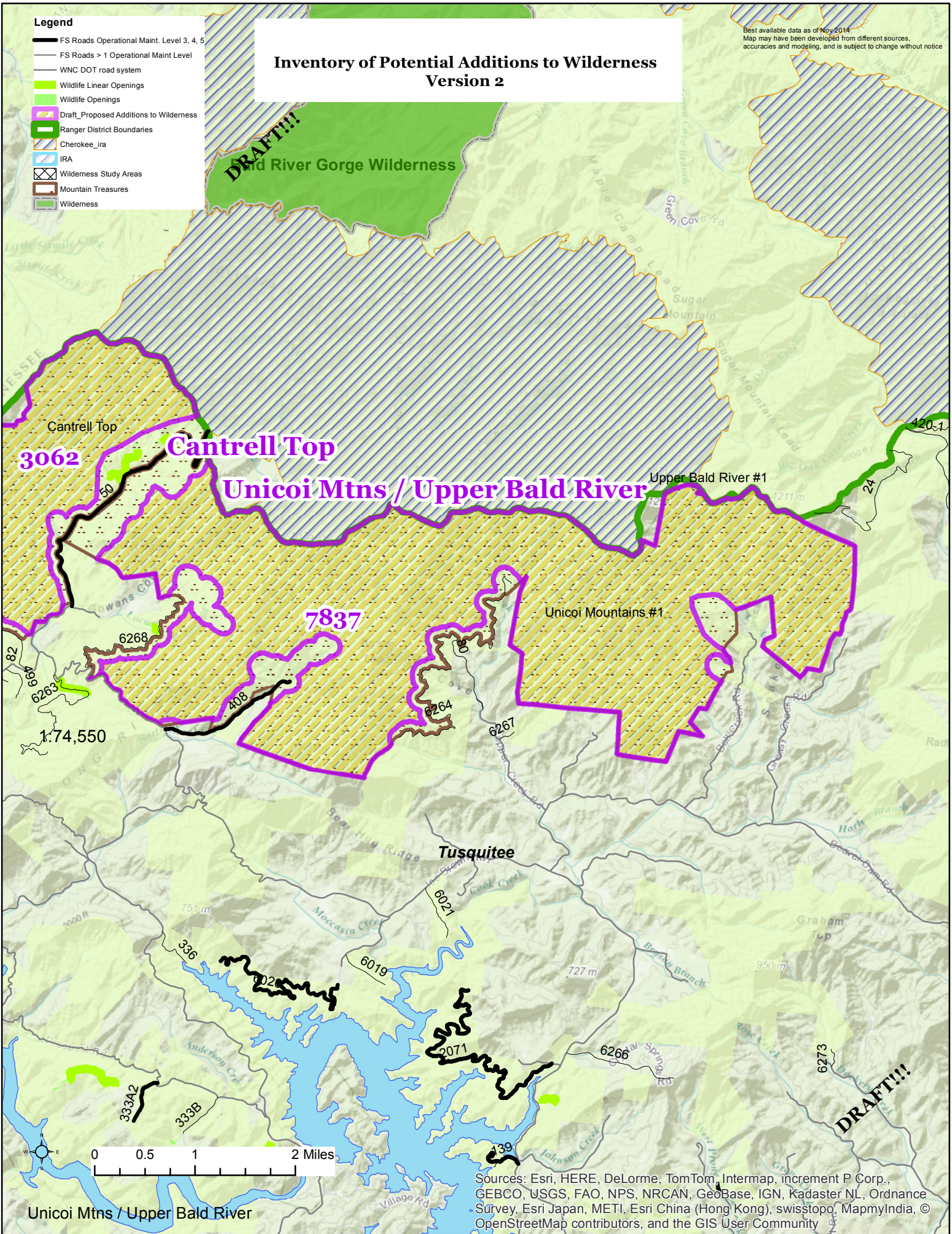
Sources: Esri, HERE, DeLorme, TomTom, Intermap, increment P Corp., GEBCO, USGS, FAO, NPS, NRCAN, GeoBase, IGN, Kadaster NL, Ordnance Survey, Esri Japan, METI, Esri China (Hong Kong), swisstopo, MapmyIndia, © OpenStreetMap contributors, and the GIS User Community

Legend

- FS Roads Operational Maint. Level 3, 4, 5
- FS Roads > 1 Operational Maint Level
- WNC DOT road system
- Wildlife Linear Openings
- Wildlife Openings
- Draft_Proposed Additions to Wilderness
- Ranger District Boundaries
- Cherokee_ira
- IRA
- Wilderness Study Areas
- Mountain Treasures
- Wilderness

Inventory of Potential Additions to Wilderness Version 2

Best available data as of Nov 2014.
Map may have been developed from different sources,
accuracies and modeling, and is subject to change without notice



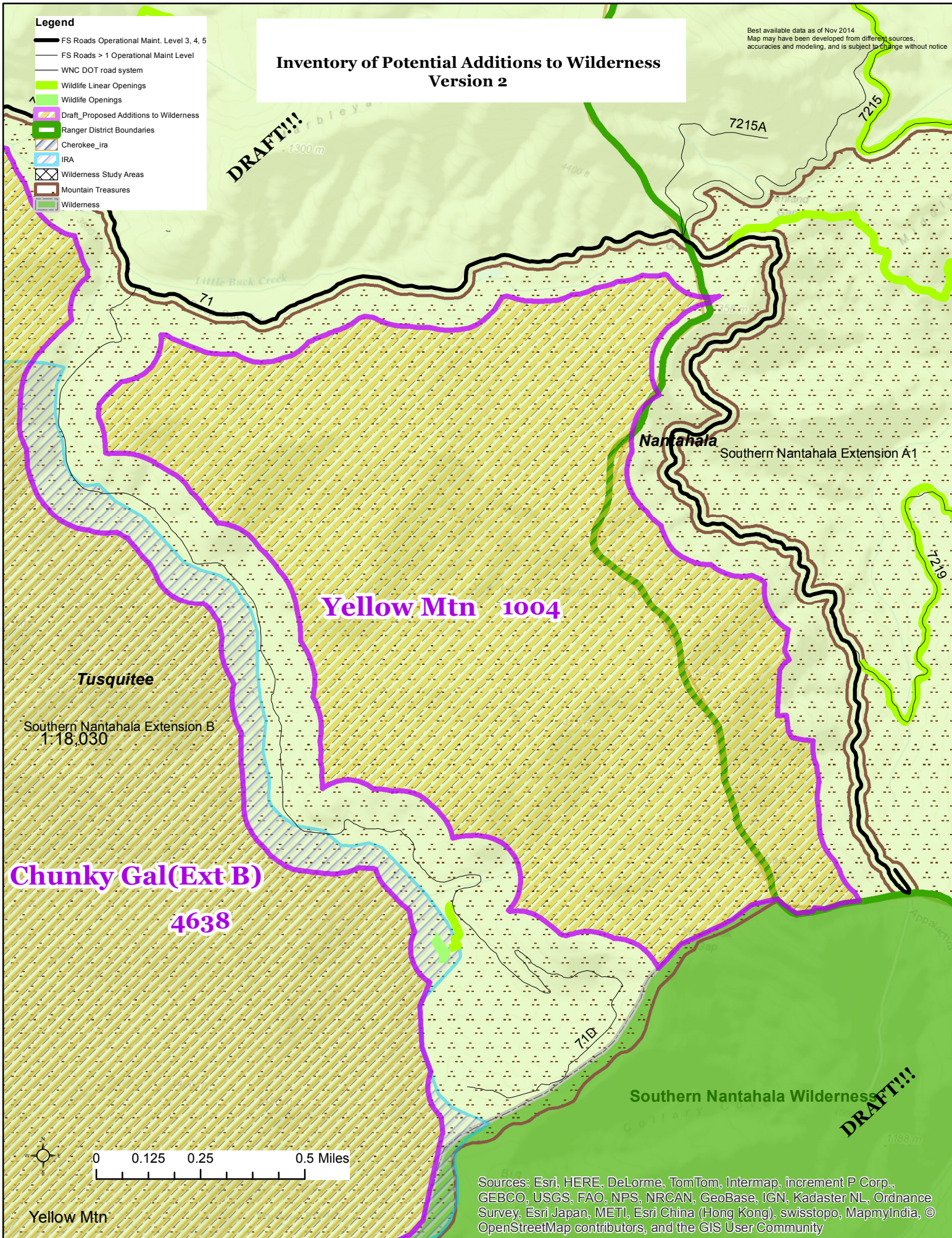
Sources: Esri, HERE, DeLorme, TomTom, Intermap, increment P Corp., GEBCO, USGS, FAO, NPS, NRCAN, GeoBase, IGN, Kadaster NL, Ordnance Survey, Esri Japan, METI, Esri China (Hong Kong), swisstopo, MapmyIndia, © OpenStreetMap contributors, and the GIS User Community

Inventory of Potential Additions to Wilderness Version 2

Best available data as of Nov 2014
Map may have been developed from different sources,
accuracies and modeling, and is subject to change without notice

- Legend**
- FS Roads Operational Maint. Level 3, 4, 5
 - FS Roads > 1 Operational Maint Level
 - WNC DOT road system
 - Wildlife Linear Openings
 - Wildlife Openings
 - Draft_Proposed Additions to Wilderness
 - Ranger District Boundaries
 - Cherokee_ira
 - IRA
 - Wilderness Study Areas
 - Mountain Treasures
 - Wilderness

DRAFT!!!



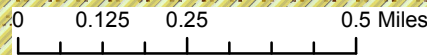
Yellow Mtn 1004

Chunky Gal (Ext B)
4638

Nantahala
Southern Nantahala Extension A1

Southern Nantahala Wilderness

DRAFT!!!



Sources: Esri, HERE, DeLorme, TomTom, Intermap, increment P Corp., GEBCO, USGS, FAO, NPS, NRCAN, GeoBase, IGN, Kadaster NL, Ordnance Survey, Esri Japan, METI, Esri China (Hong Kong), swisstopo, MapmyIndia, © OpenStreetMap contributors, and the GIS User Community

Yellow Mtn