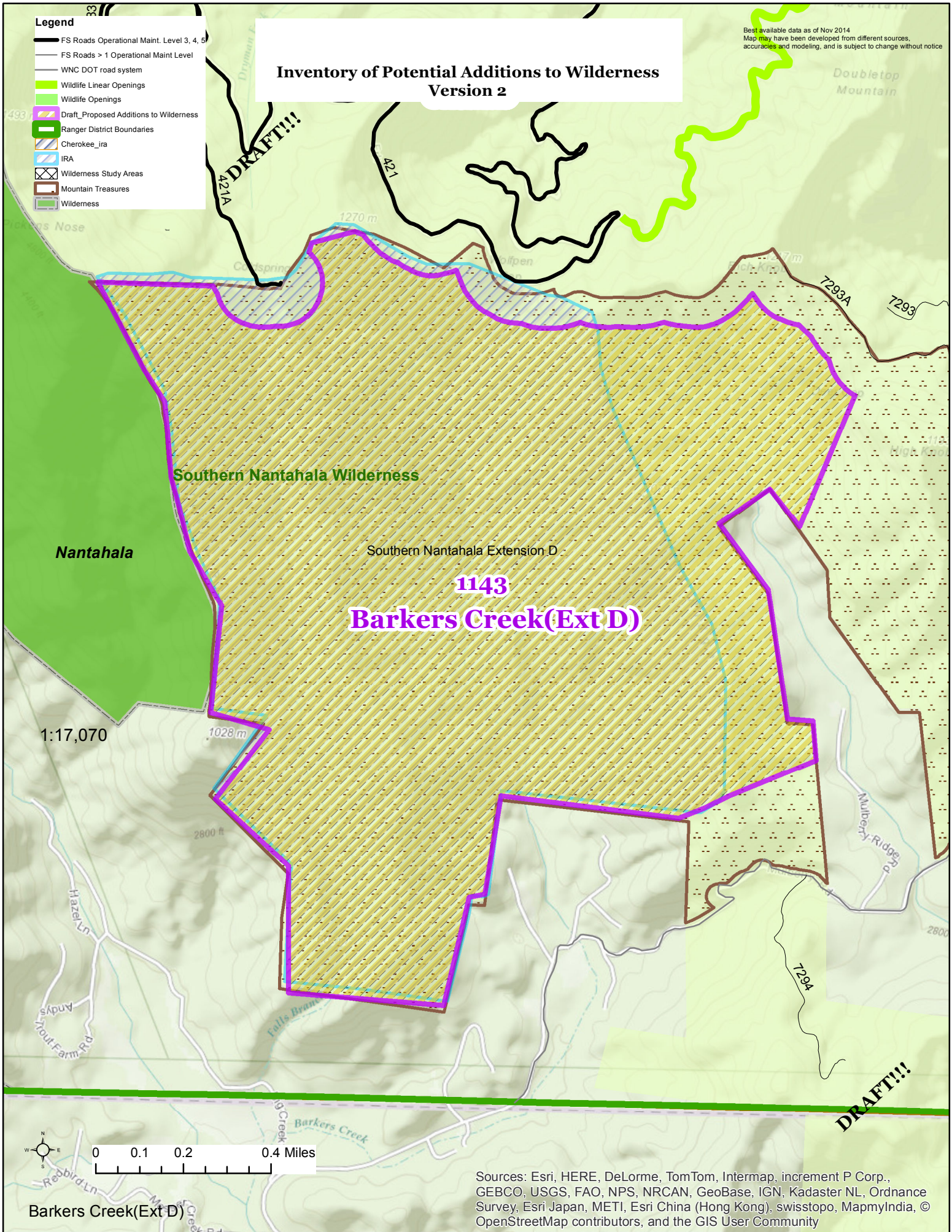


Legend

- FS Roads Operational Maint. Level 3, 4, 5
- FS Roads > 1 Operational Maint Level
- WNC DOT road system
- Wildlife Linear Openings
- Wildlife Openings
- Draft_Proposed Additions to Wilderness
- Ranger District Boundaries
- Cherokee_ira
- IRA
- Wilderness Study Areas
- Mountain Treasures
- Wilderness

Best available data as of Nov 2014
Map may have been developed from different sources,
accuracies and modeling, and is subject to change without notice

Inventory of Potential Additions to Wilderness Version 2



DRAFT!!!

DRAFT!!!

**1143
Barkers Creek(Ext D)**

Sources: Esri, HERE, DeLorme, TomTom, Intermap, increment P Corp.,
GEBCO, USGS, FAO, NPS, NRCAN, GeoBase, IGN, Kadaster NL, Ordnance
Survey, Esri Japan, METI, Esri China (Hong Kong), swisstopo, MapmyIndia, ©
OpenStreetMap contributors, and the GIS User Community

Barkers Creek(Ext D)

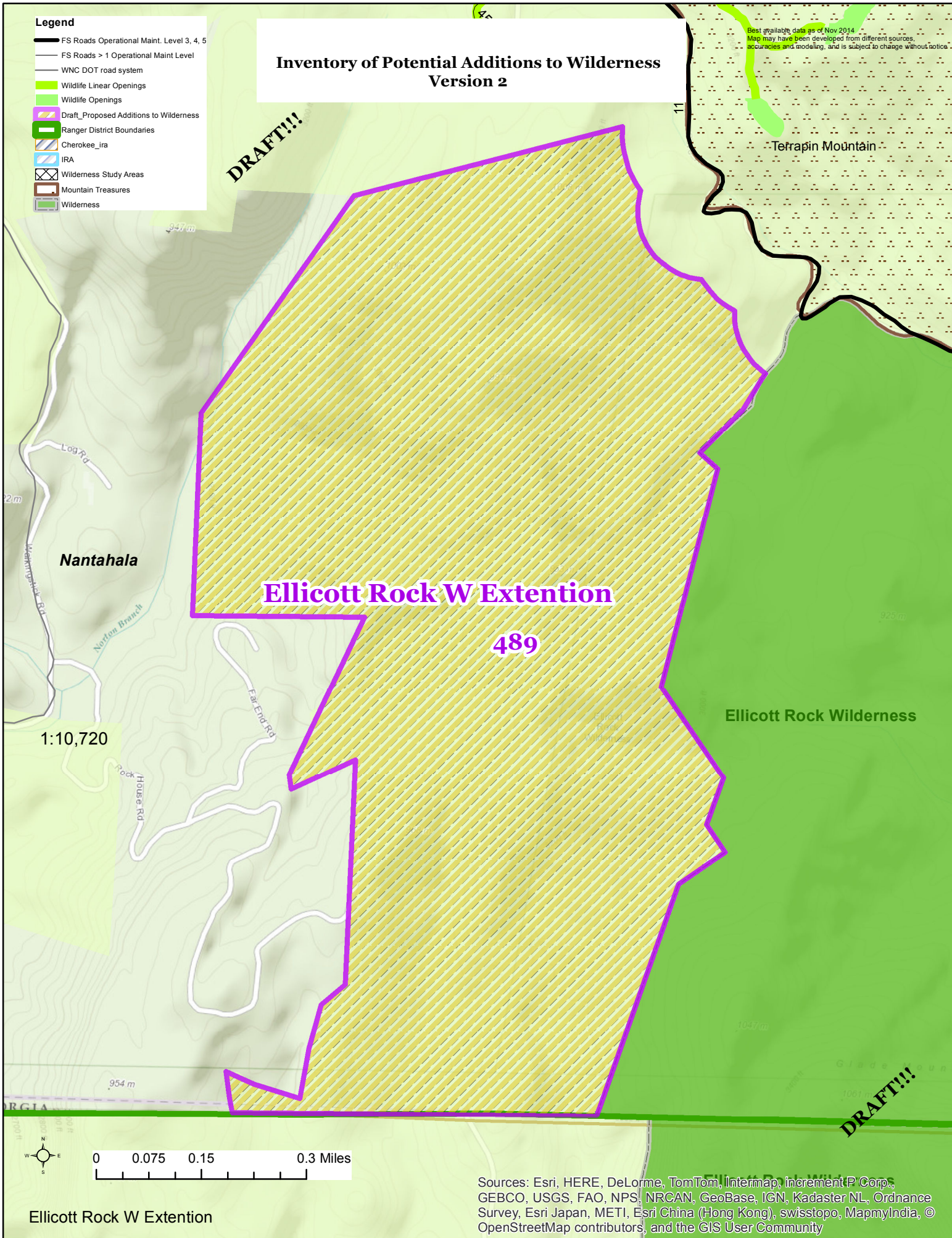
Legend

- FS Roads Operational Maint. Level 3, 4, 5
- FS Roads > 1 Operational Maint Level
- WNC DOT road system
- Wildlife Linear Openings
- Wildlife Openings
- Draft_Proposed Additions to Wilderness
- Ranger District Boundaries
- Cherokee_ira
- IRA
- Wilderness Study Areas
- Mountain Treasures
- Wilderness

Inventory of Potential Additions to Wilderness Version 2

Best available data as of Nov 2014
Map may have been developed from different sources,
accuracies and modeling, and is subject to change without notice.

DRAFT!!!



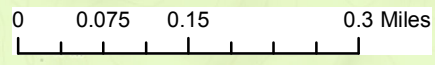
Nantahala

Ellicott Rock W Extension

489

Ellicott Rock Wilderness

1:10,720

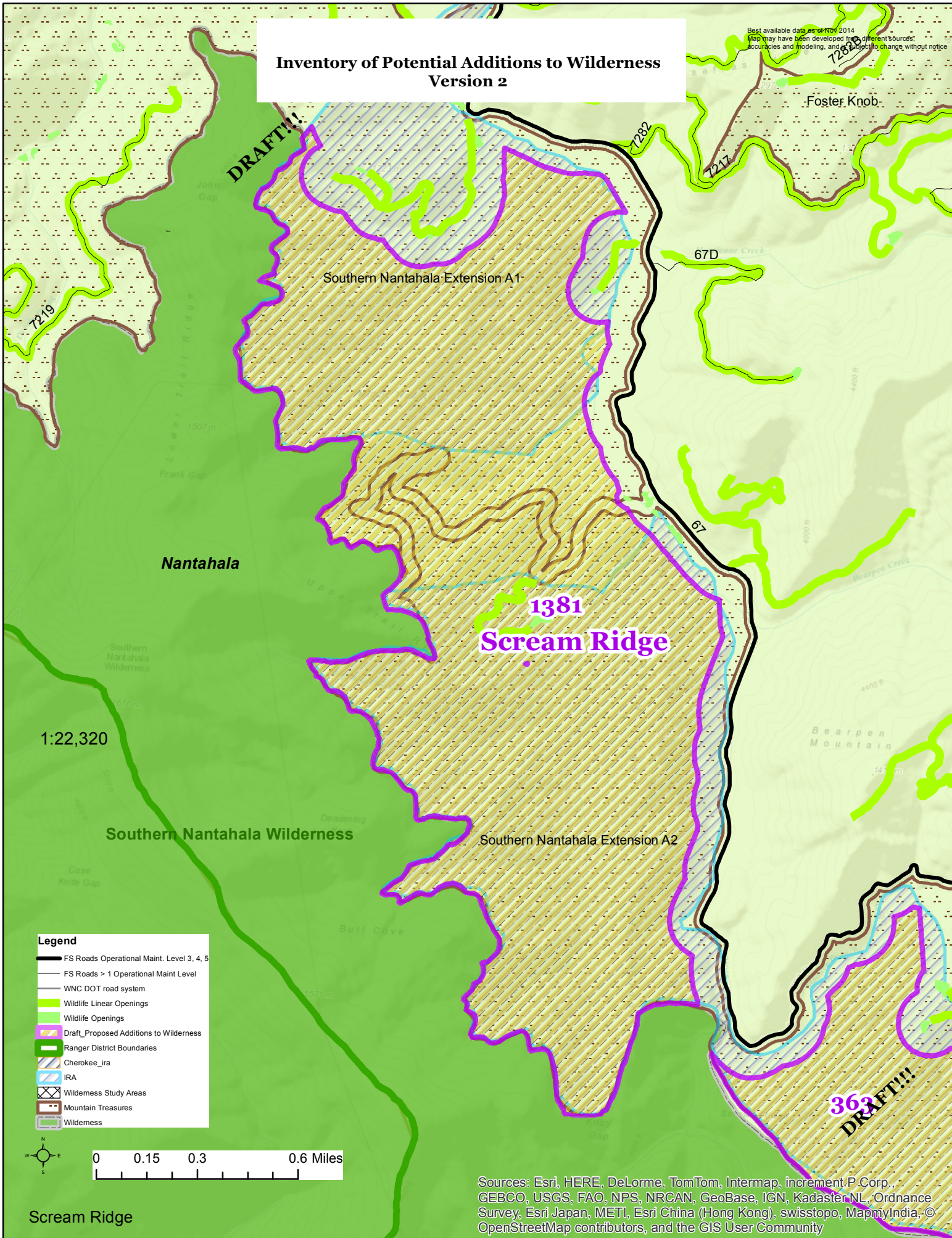


Sources: Esri, HERE, DeLorme, TomTom, Intermap, increment P Corp., GEBCO, USGS, FAO, NPS, NRCAN, GeoBase, IGN, Kadaster NL, Ordnance Survey, Esri Japan, METI, Esri China (Hong Kong), swisstopo, MapmyIndia, © OpenStreetMap contributors, and the GIS User Community

Ellicott Rock W Extension

Inventory of Potential Additions to Wilderness Version 2

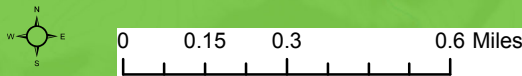
Best available data as of Nov 2014
Map may have been developed from different sources;
accuracies and modeling, and subject to change without notice



DRAFT!!!

363
DRAFT!!!













- Legend**
- FS Roads Operational Maint. Level 3, 4, 5
 - FS Roads > 1 Operational Maint Level
 - WNC DOT road system
 - Wildlife Linear Openings
 - Wildlife Openings
 - Draft_Proposed Additions to Wilderness
 - Ranger District Boundaries
 - Cherokee_ira
 - IRA
 - Wilderness Study Areas
 - Mountain Treasures
 - Wilderness



Sources: Esri, HERE, DeLorme, TomTom, Intermap, increment P Corp., GEBCO, USGS, FAO, NPS, NRCAN, GeoBase, IGN, Kadaster NL, Ordnance Survey, Esri Japan, METI, Esri China (Hong Kong), swisstopo, MapmyIndia, © OpenStreetMap contributors, and the GIS User Community

Scream Ridge

Legend

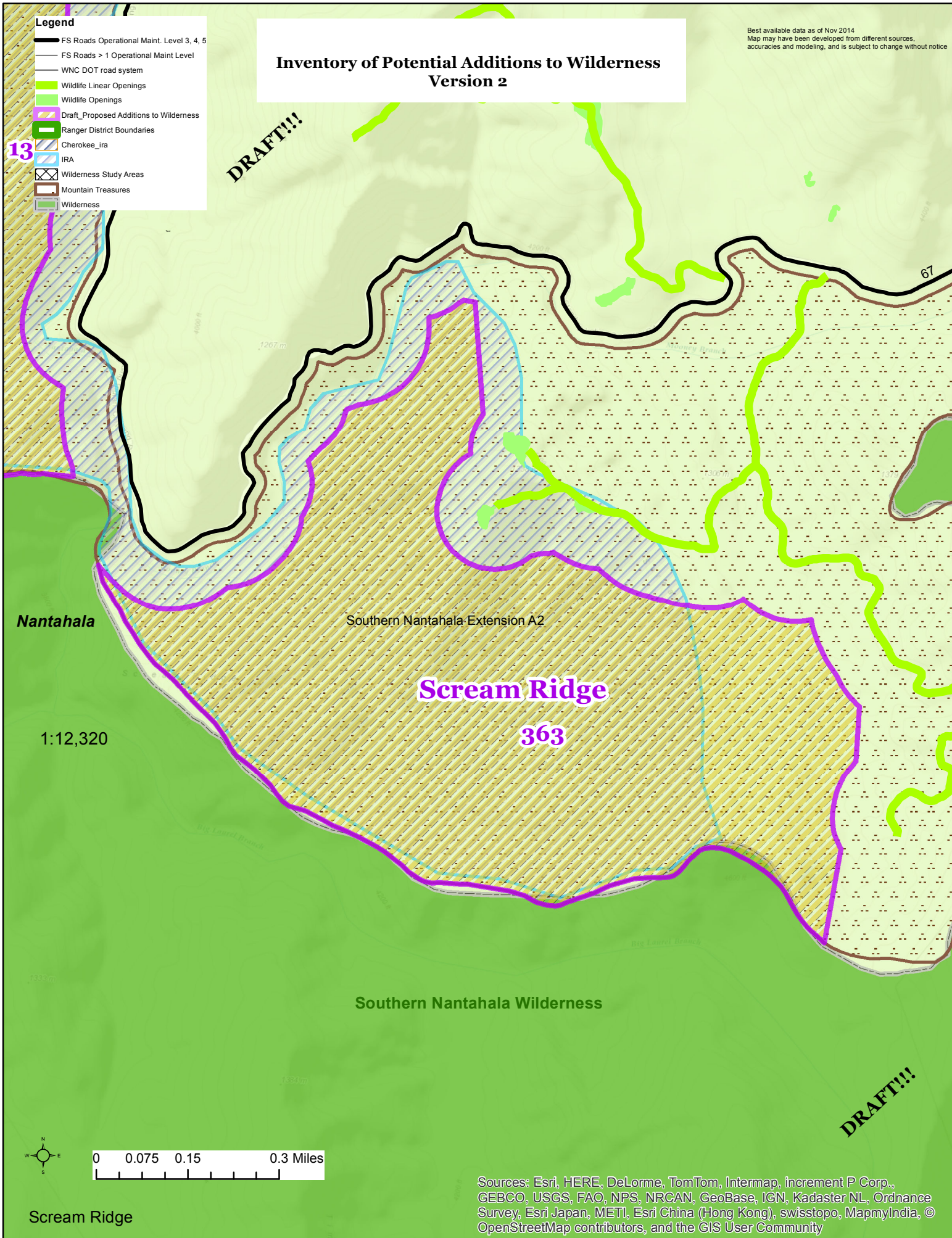
-  FS Roads Operational Maint. Level 3, 4, 5
-  FS Roads > 1 Operational Maint Level
-  WNC DOT road system
-  Wildlife Linear Openings
-  Wildlife Openings
-  Draft_Proposed Additions to Wilderness
-  Ranger District Boundaries
-  Cherokee_ira
-  IRA
-  Wilderness Study Areas
-  Mountain Treasures
-  Wilderness

13

DRAFT!!!

**Inventory of Potential Additions to Wilderness
Version 2**

Best available data as of Nov 2014
Map may have been developed from different sources, accuracies and modeling, and is subject to change without notice



Nantahala

Southern Nantahala-Extension A2

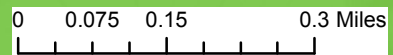
Scream Ridge

363

1:12,320

Southern Nantahala Wilderness

DRAFT!!!



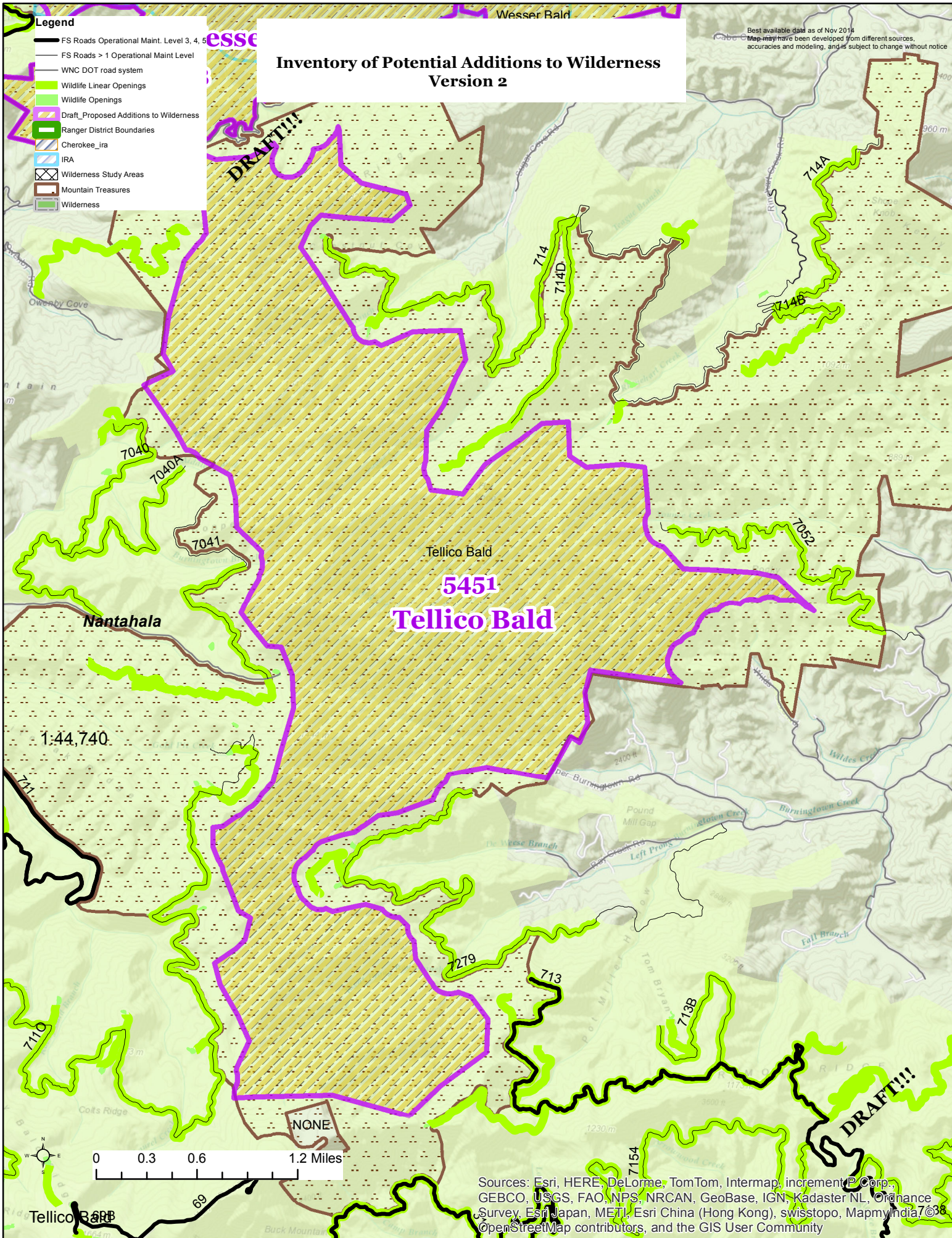
Sources: Esri, HERE, DeLorme, TomTom, Intermap, increment P Corp., GEBCO, USGS, FAO, NPS, NRCAN, GeoBase, IGN, Kadaster NL, Ordnance Survey, Esri Japan, METI, Esri China (Hong Kong), swisstopo, MapmyIndia, © OpenStreetMap contributors, and the GIS User Community

Scream Ridge

Inventory of Potential Additions to Wilderness Version 2

Best available data as of Nov 2014
Map may have been developed from different sources, accuracies and modeling, and is subject to change without notice

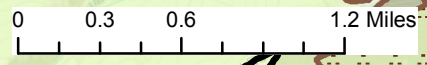
- Legend**
- FS Roads Operational Maint. Level 3, 4, 5
 - FS Roads > 1 Operational Maint Level
 - WNC DOT road system
 - Wildlife Linear Openings
 - Wildlife Openings
 - Draft_Proposed Additions to Wilderness
 - Ranger District Boundaries
 - Cherokee_ira
 - IRA
 - Wilderness Study Areas
 - Mountain Treasures
 - Wilderness



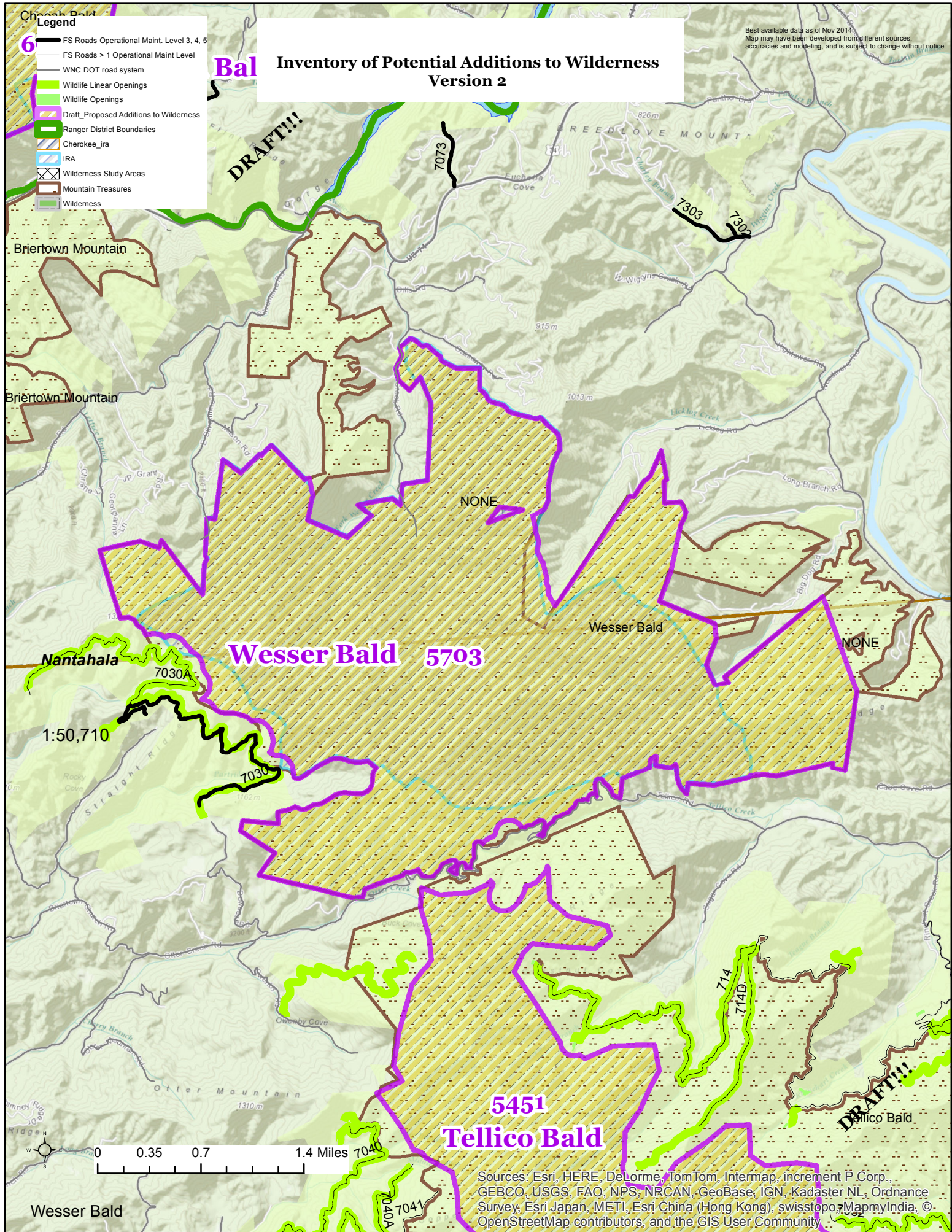
DRAFT!!!

**5451
Tellico Bald**

DRAFT!!!



Sources: Esri, HERE, DeLorme, TomTom, Intermap, increment P Corp., GEBCO, USGS, FAO, NPS, NRCAN, GeoBase, IGN, Kadaster NL, Ordnance Survey, Esri Japan, METI, Esri China (Hong Kong), swisstopo, MapmyIndia, © OpenStreetMap contributors, and the GIS User Community



Inventory of Potential Additions to Wilderness Version 2

Best available data as of Nov 2014.
Map may have been developed from different sources,
accuracies and modeling, and is subject to change without notice

- Legend**
- 6 FS Roads Operational Maint. Level 3, 4, 5
 - FS Roads > 1 Operational Maint Level
 - WNC DOT road system
 - Wildlife Linear Openings
 - Wildlife Openings
 - Draft_Proposed Additions to Wilderness
 - Ranger District Boundaries
 - Cherokee_ira
 - IRA
 - Wilderness Study Areas
 - Mountain Treasures
 - Wilderness

Bal

DRAFT!!!

NONE

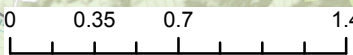
Wesser Bald 5703

Wesser Bald

NONE

5451
Tellico Bald

DRAFT!!!



Sources: Esri, HERE, DeLorme, TomTom, Intermap, increment P Corp., GEBCO, USGS, FAO, NPS, NRCAN, GeoBase, IGN, Kadaster NL, Ordnance Survey, Esri Japan, METI, Esri China (Hong Kong), swisstopo, MapmyIndia, © OpenStreetMap contributors, and the GIS User Community

Wesser Bald