

**Pisgah National Forest  
Appalachian Ranger District  
Inventory of Potential Additions to Wilderness  
Version 2**

Best available data as of Nov 2014  
Map may have been developed from different sources,  
accuracies and modeling, and is subject to change without notice

- Legend**
- FS Roads Operational Maint. Level 3, 4, 5
  - FS Roads > 1 Operational Maint Level
  - WNC DOT road system
  - Wildlife Linear Openings
  - Wildlife Openings
  - Draft\_Proposed Additions to Wilderness
  - Ranger District Boundaries
  - Cherokee\_ira
  - IRA
  - Wilderness Study Areas
  - Mountain Treasures
  - Wilderness

**DRAFT!!!**

**DRAFT!!!**

**Bald Mountain**

**10980**

**1:92,540**

**Appalachian**

**Paint Creek**

**Divide Mountain**

**275**

**Divide Mountain**

0 0.5 1 2 Miles

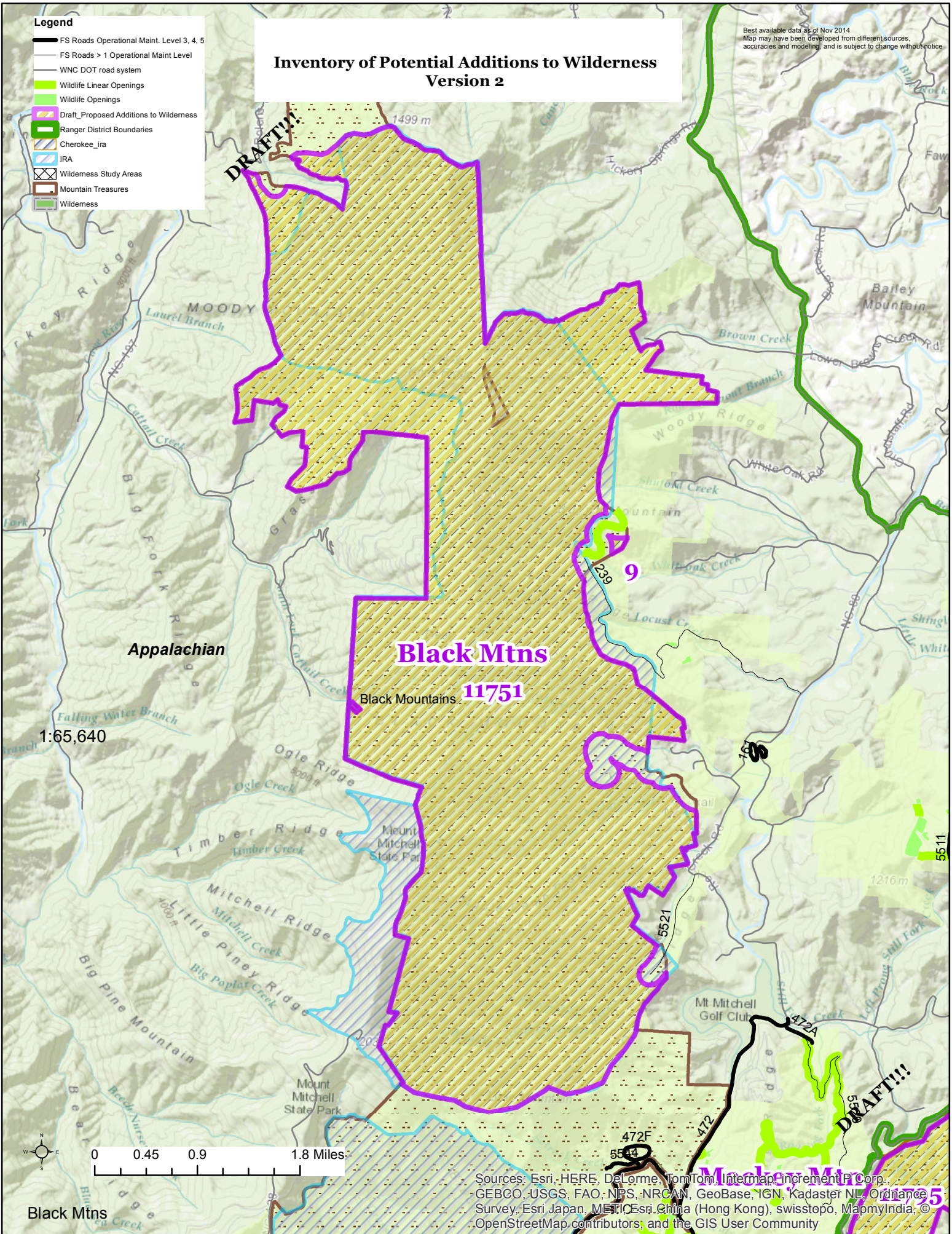
Sources: Esri, HERE, DeLorme, TomTom, Intermap, increment P Corp., GEBCO, USGS, FAO, NPS, NRCAN, GeoBase, IGN, Kadaster NL, Ordnance Survey, Esri Japan, METI, Esri China (Hong Kong), swisstopo, MapmyIndia, © OpenStreetMap contributors, and the GIS User Community

**Legend**

- FS Roads Operational Maint. Level 3, 4, 5
- FS Roads > 1 Operational Maint Level
- WNC DOT road system
- Wildlife Linear Openings
- Wildlife Openings
- Draft\_Proposed Additions to Wilderness
- Ranger District Boundaries
- Cherokee\_ira
- IRA
- Wilderness Study Areas
- Mountain Treasures
- Wilderness

# Inventory of Potential Additions to Wilderness Version 2

Best available data as of Nov 2014  
Map may have been developed from different sources,  
accuracies and modeling, and is subject to change without notice.



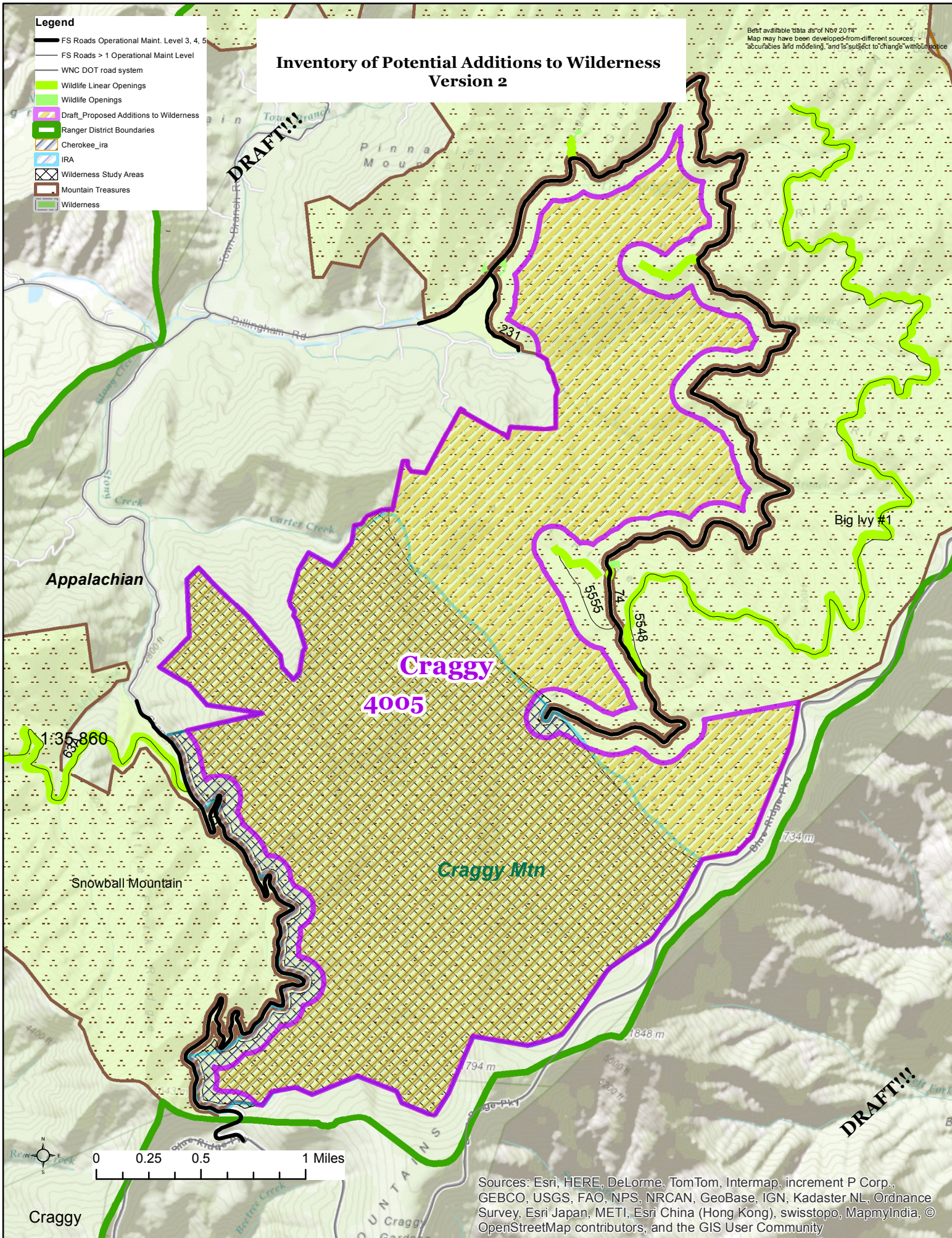
Sources: Esri, HERE, DeLorme, TomTom, Intermap, increment P Corp., GEBCO, USGS, FAO, NPS, NRCAN, GeoBase, IGN, Kadaster NL, Ordnance Survey, Esri Japan, METI, Esri China (Hong Kong), swisstopo, MapmyIndia, © OpenStreetMap contributors, and the GIS User Community

# Inventory of Potential Additions to Wilderness Version 2

Best available data as of Nov 2014  
Map may have been developed from different sources, accuracies and modeling, and is subject to change without notice

- Legend**
- FS Roads Operational Maint. Level 3, 4, 5
  - FS Roads > 1 Operational Maint Level
  - WNC DOT road system
  - Wildlife Linear Openings
  - Wildlife Openings
  - Draft\_Proposed Additions to Wilderness
  - Ranger District Boundaries
  - Cherokee\_ira
  - IRA
  - Wilderness Study Areas
  - Mountain Treasures
  - Wilderness

**DRAFT!!!**



Appalachian

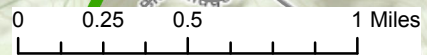
**Craggy**  
**4005**

Craggy Mtn

Big Ivy #1

1:35,860

Snowball Mountain



Sources: Esri, HERE, DeLorme, TomTom, Intermap, increment P Corp., GEBCO, USGS, FAO, NPS, NRCAN, GeoBase, IGN, Kadaster NL, Ordnance Survey, Esri Japan, METI, Esri China (Hong Kong), swisstopo, MapmyIndia, © OpenStreetMap contributors, and the GIS User Community

**DRAFT!!!**

Craggy

# Inventory of Potential Additions to Wilderness Version 2

## Legend

- FS Roads Operational Maint. Level 3, 4, 5
- FS Roads > 1 Operational Maint Level
- WNC DOT road system
- Wildlife Linear Openings
- Wildlife Openings
- Draft\_Proposed Additions to Wilderness
- Ranger District Boundaries
- Cherokee\_ira
- IRA
- Wilderness Study Areas
- Mountain Treasures
- Wilderness

**DRAFT!!!**

**Pigeon River 5324**

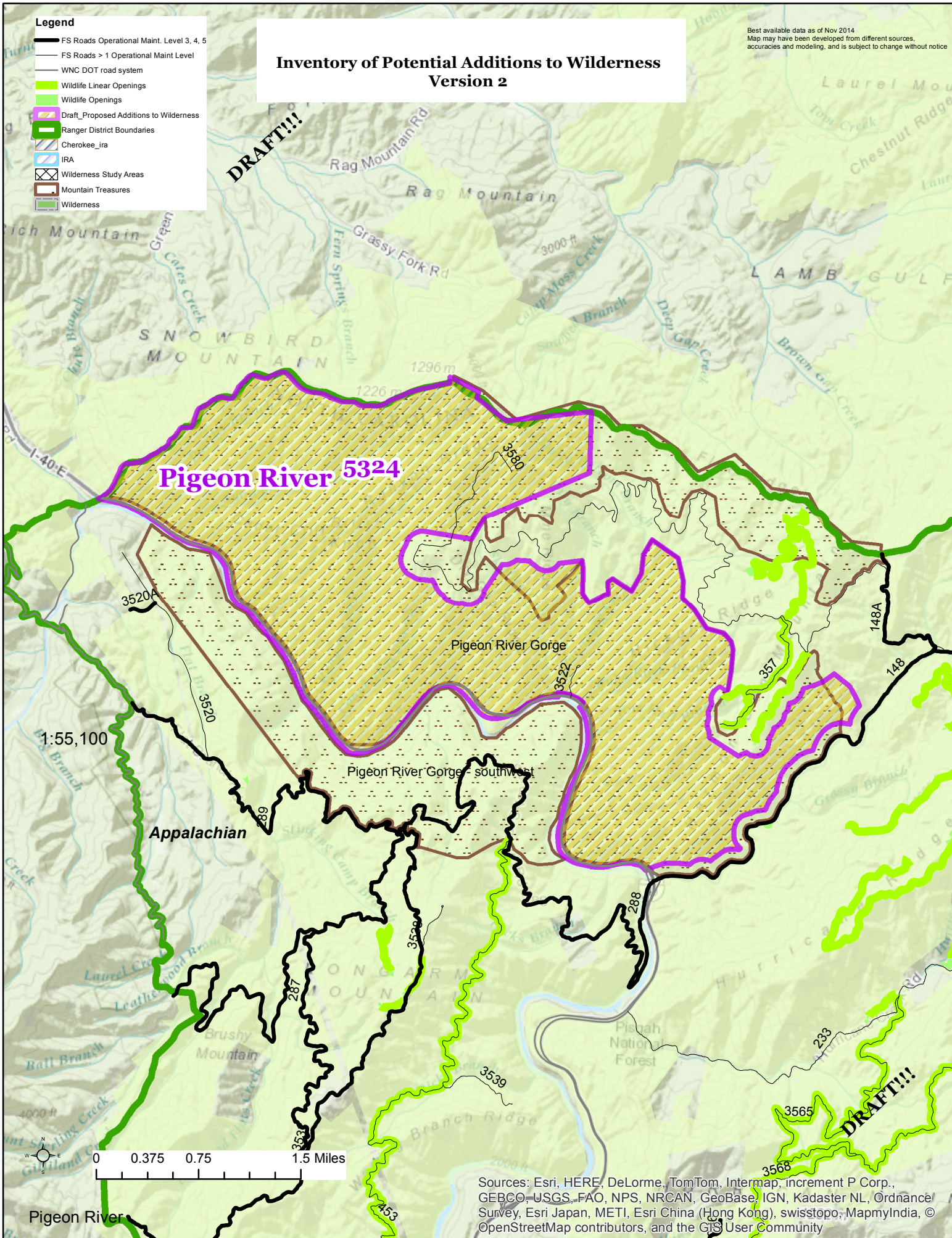
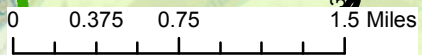
Pigeon River Gorge

Pigeon River Gorge - southwest

Appalachian













Pisgah National Forest

**DRAFT!!!**

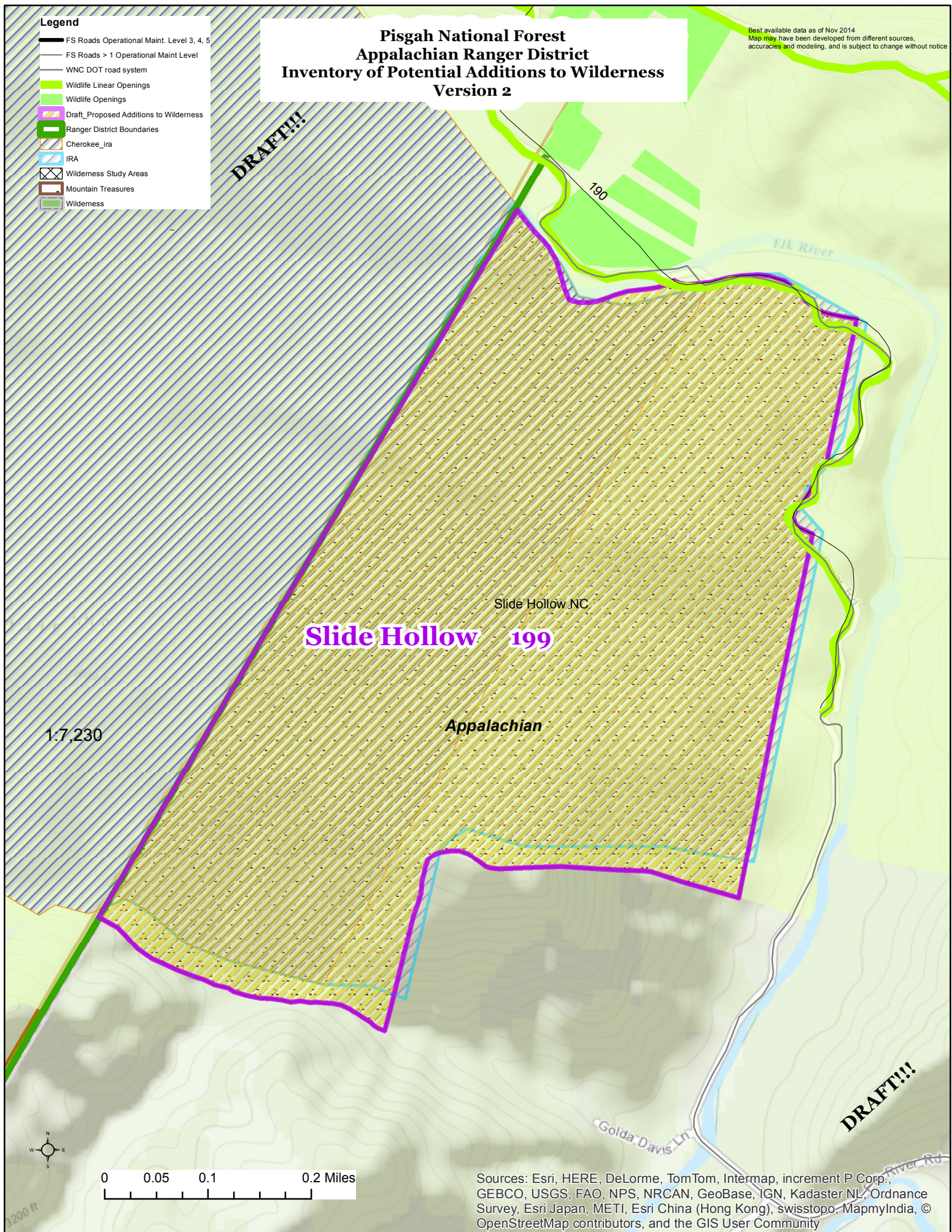


# Pisgah National Forest Appalachian Ranger District Inventory of Potential Additions to Wilderness Version 2

Best available data as of Nov 2014  
Map may have been developed from different sources, accuracies and modeling, and is subject to change without notice

- Legend**
-  FS Roads Operational Maint. Level 3, 4, 5
  -  FS Roads > 1 Operational Maint Level
  -  WNC DOT road system
  -  Wildlife Linear Openings
  -  Wildlife Openings
  -  Draft\_Proposed Additions to Wilderness
  -  Ranger District Boundaries
  -  Cherokee\_ira
  -  IRA
  -  Wilderness Study Areas
  -  Mountain Treasures
  -  Wilderness

**DRAFT!!!**



Sources: Esri, HERE, DeLorme, TomTom, Intermap, increment P Corp., GEBCO, USGS, FAO, NPS, NRCAN, GeoBase, IGN, Kadaster NL, Ordnance Survey, Esri Japan, METI, Esri China (Hong Kong), swisstopo, MapmyIndia, © OpenStreetMap contributors, and the GIS User Community