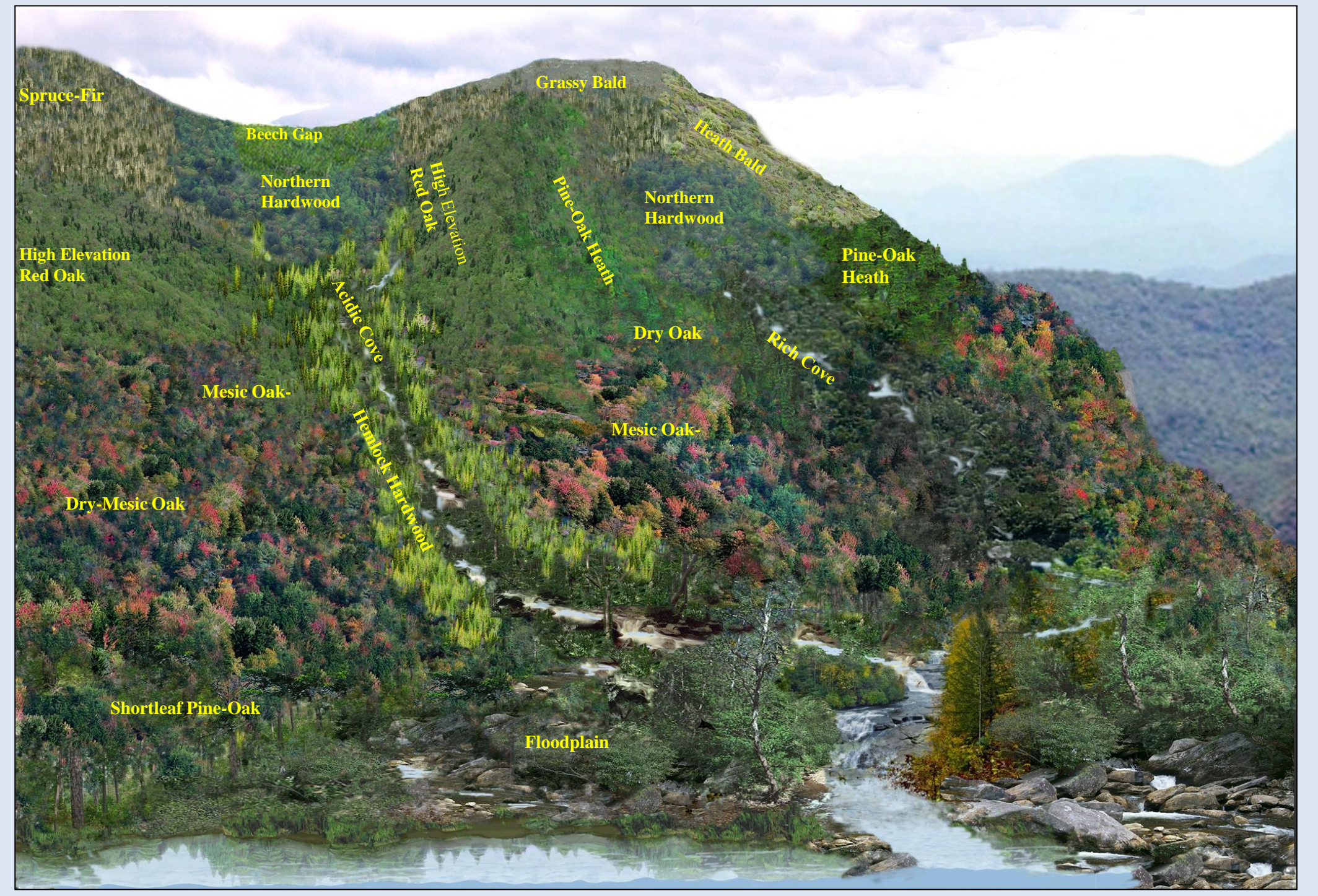
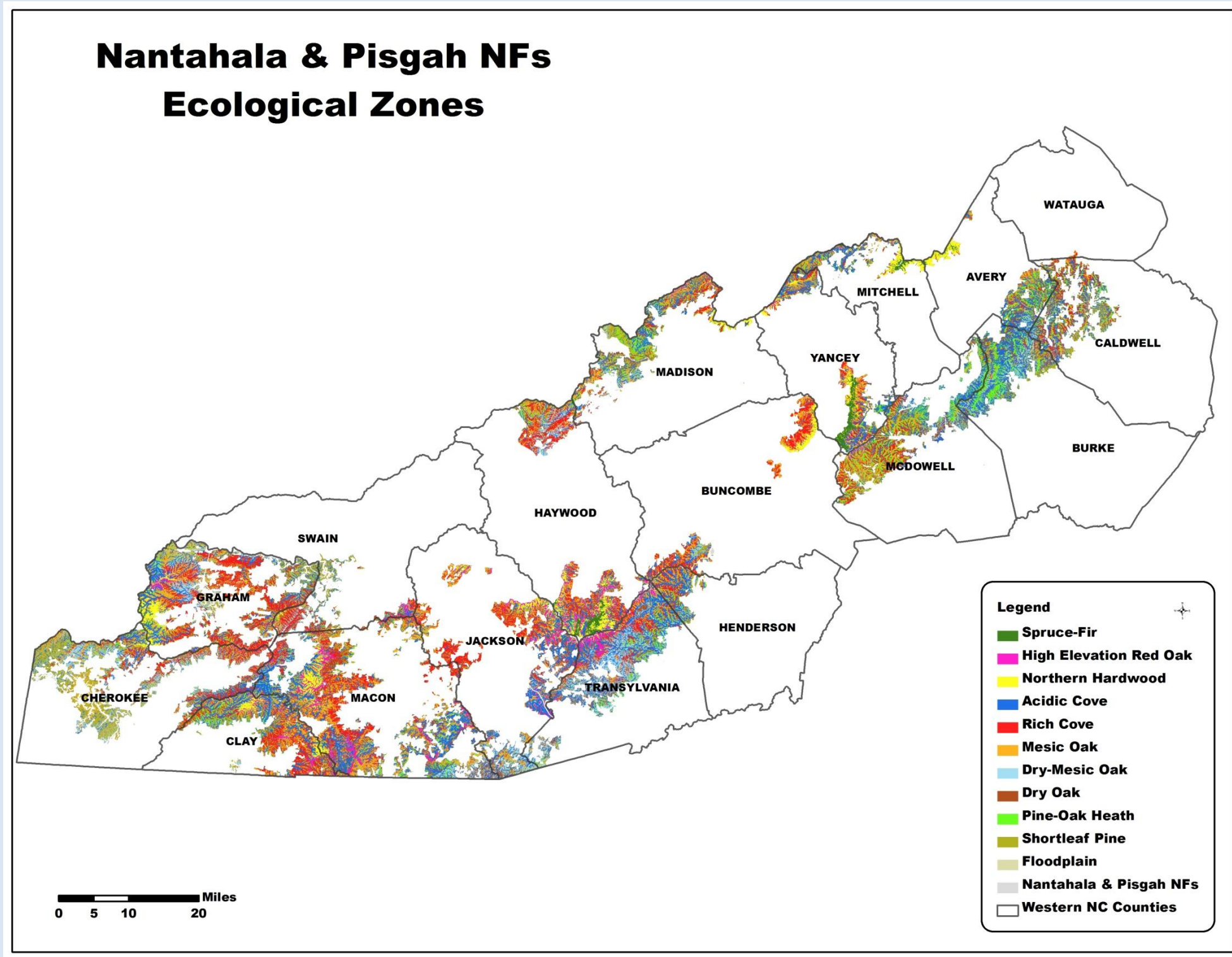
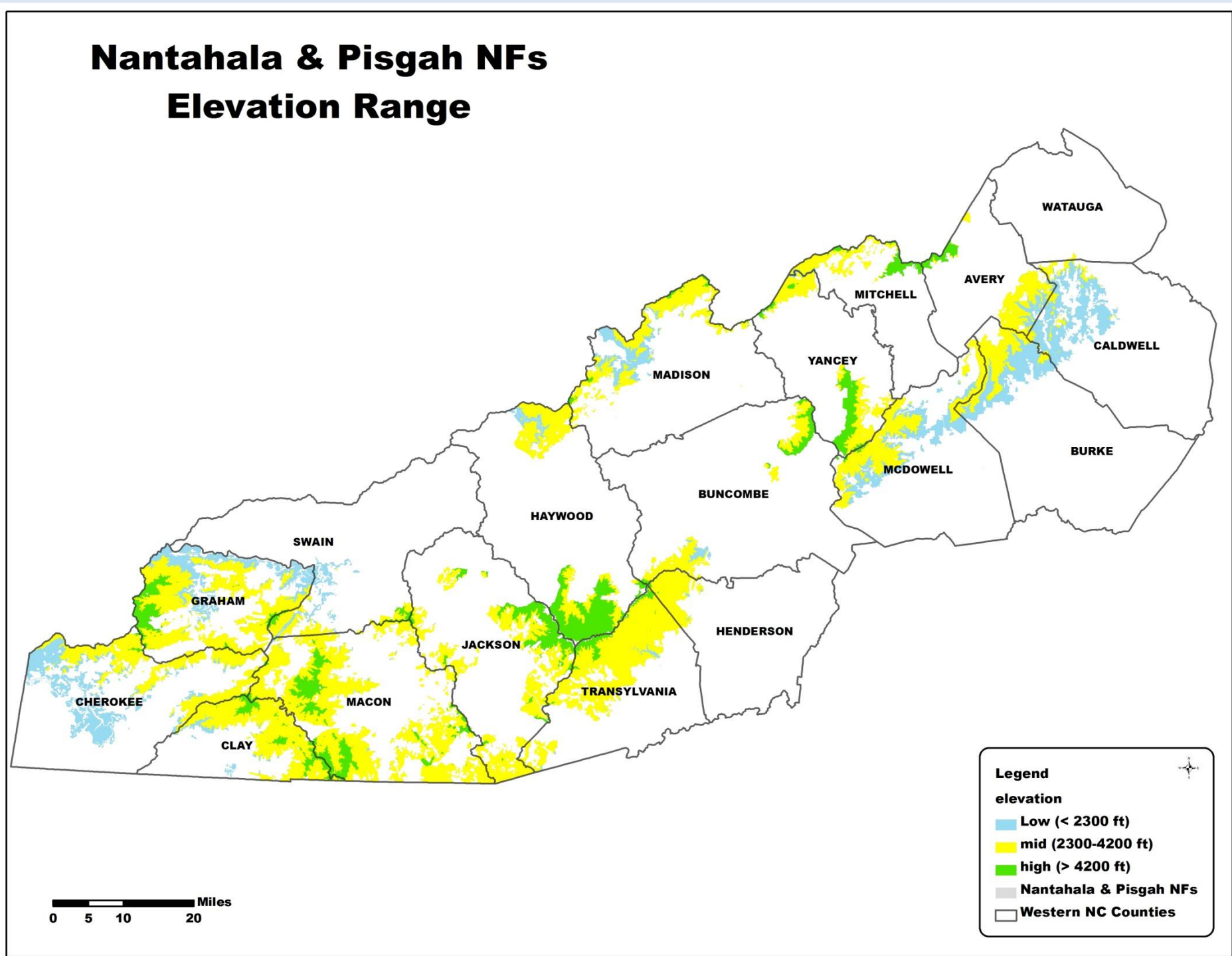


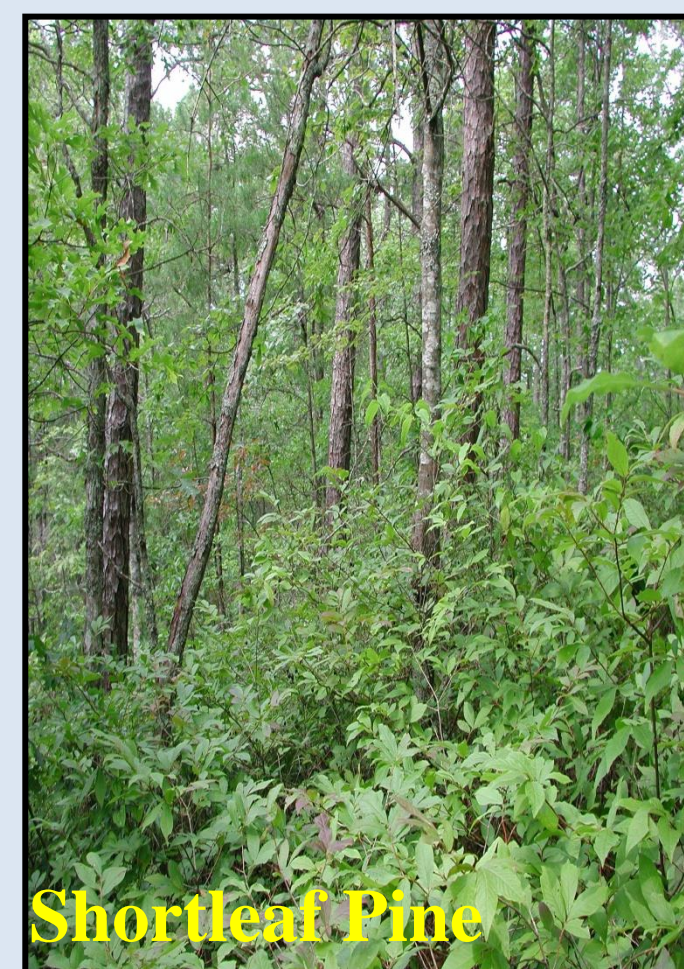
# VEGETATION – ECOZONES



Environmental conditions shape the local vegetation. They vary across the Nantahala – Pisgah NFs; for example elevation ranges.



Elevation	Range (feet)	Acres	% Forest	% Landscape (18 Counties)
High	> 4200	138258	13%	7%
Mid	2300 - 4200	693253	67%	57%
Low	<2300	208566	20%	36%



Individual ecozones vary by structure, composition and growth rates, all which influence age class separations

Elevation	Ecozone	Age Class			
		Early	Mid	Late	Old Growth
High	Spruce-Fir	0-35	36-70	71-120	120+
High	High Elevation Red Oak	0-20	21-70	71-130	130+
High	Northern Hardwoods	0-15	16-75	76-130	130+
Mid	Rich Cove or Acidic Cove	0-10	11-100	101-140	140+
Mid	Mesic Oak	0-10	11-80	81-130	130+
Mid	Dry-Mesic Oak	0-15	16-75	76-130	130+
Mid	Dry Oak	0-20	21-70	71-100	100+
Mid	Pine-Oak/Heath	0-20	21-70	71-130	130+
Low	Shortleaf Pine	0-15	16-70	71-130	130+
Low	Floodplain Forest	0-10	11-100	101-140	140+

