

**U.S. DEPARTMENT OF AGRICULTURE, FOREST SERVICE
NATIONAL FORESTS IN NORTH CAROLINA**

**UWHARRIE NATIONAL FOREST
UWHARRIE RANGER DISTRICT**

**Order Number 08-11-10-14-01
Flintlock Valley Shooting Range**

Pursuant to 16 U.S.C. § 551, and 36 C.F.R. §§ 261.50, 261.52 - 261.58, the following prohibitions apply to the Flintlock Valley Shooting Range on the Uwharrie National Forest (a/k/a Uwharrie Ranger District). The Flintlock Valley Shooting Range is depicted on the attached map.

- 1. It is prohibited to be in the Flintlock Valley Shooting Range Area when the gates on access road 576 are closed and when a Forest Service Range Safety Officer is not present.**
- 2. It is prohibited to be in the Safety Zone at any time, for any purpose.** The Safety Zone is that area around the range, described as follows: east of Forest Road 576; north of Forest Road 6688; south of the un-named tributary. The boundary is posted with "No Entry" signs. The Safety Zone is depicted on the attached map.
- 3. It is prohibited to use the Flintlock Valley Shooting Range Area without a valid special recreation permit (e.g., a valid pass).**
- 4. It is prohibited to possess any alcoholic beverage or other controlled substance, as defined by North Carolina state law, within the Flintlock Valley Shooting Range Area.**
- 5. It is prohibited to smoke on the firing line.**
- 6. It is prohibited to use targets or target stands that are not approved by the Range Safety Officer.**
- 7. It is prohibited to use a .50 caliber Browning machine Gun (BMG) or larger rifle.**
- 8. It is prohibited to use a fully automatic weapon unless the Flintlock Valley Shooting Range Area has been explicitly posted by the Forest Service as allowing the use of automatic weapons on that particular day and time and owner has valid permit.**
- 9. It is prohibited to engage in trap, skeet, or archery shooting.**

10. It is prohibited to use any tracer or incendiary ammunition, or any tracer or incendiary devices or equipment of any kind or nature.
11. It is prohibited to use any exploding or pyrotechnic targets.
12. It is prohibited to place any targets lower than 3 feet or higher than 6 feet.
13. It is prohibited to shoot from the prone position.
14. It is prohibited to move downrange without the shooter's weapon being holstered or cleared.
15. It is prohibited to handle any weapon on the firing line while any person is downrange, or in the act of moving downrange or returning to the firing line from downrange.
16. It is prohibited to leave empty shell casings at the site, which must be removed or placed into appropriate containers.
17. It is prohibited for shooters to occupy more than one (1) firing lane.
18. It is prohibited to fire at a target in another lane, i.e., cross-lane firing is prohibited.
19. It is prohibited to intentionally or deliberately fire over a target or otherwise fire a weapon into the air.
20. Except for the firing line, it is prohibited to discharge a weapon from any location within the Flintlock Valley Shooting Range Area.
21. If there is one or more shooter waiting for an open firing lane, it is prohibited to use a firing lane for more than one (1) hour.
22. It is prohibited for persons under the age of sixteen (16) to be within the Flintlock Valley Shooting Range Area unless under the immediate supervision of an adult over the age of twenty-one (21).
23. It is prohibited to bring any animal into, or otherwise possess an animal within, the Flintlock Valley Shooting Range Area.

Pursuant to 36 C.F.R. § 261.50(c), the following persons are exempted from the prohibitions contained in this Order:

1. Persons with a special use permit from an appropriate Forest Service official which specifically authorizes the person to engage in the prohibited act.

This Order supersedes Order Number 08-01-04, which was signed on September 3, 2009, but only with regard to the Flintlock Valley Shooting Range. Order Number 08-01-04, remains in effect as to all other shooting ranges except for the Flintlock Valley Shooting Range.

This Order remains in effect indefinitely until or otherwise amended or rescinded by the Forest Supervisor or other applicable authority.

Executed in Asheville, North Carolina this 18th day of June, 2014.

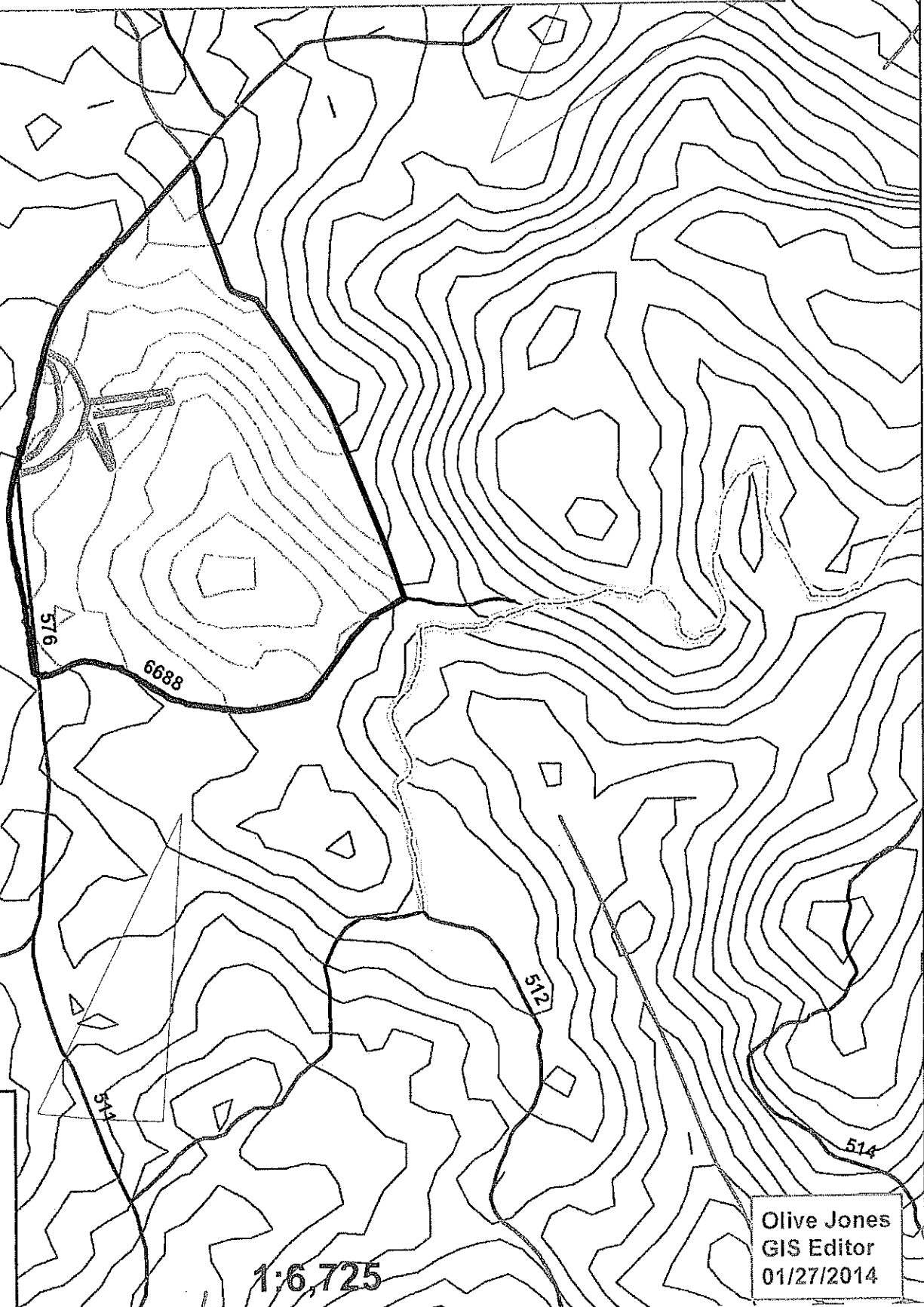


KRISTIN BAIL

Forest Supervisor

National Forests in North Carolina

**National Forests in North Carolina
Uwharrie National Forest
Montgomery County, North Carolina
Flintlock Valley Forest Order**



- Saw Mill Trail
- Shooting Range
- Streams
- Roads
- Safety Zone
- FS Land

1:6,725

Olive Jones
GIS Editor
01/27/2014