

Map 6 - Travel Management Rule - Coconino National Forest Alternative 3

Distance to the nearest road designated for motorized use on non-wilderness National Forest



0 5 10 Miles

Towns

Interstate highway

Federal or State highway

Other public road

National Forest boundary

Roads designated for motorized use

Distance to the nearest road designated for motorized use

0.0 - 0.5 miles (78.6% of non-wilderness National Forest)

0.5 - 1.0 miles (17.1% of non-wilderness National Forest)

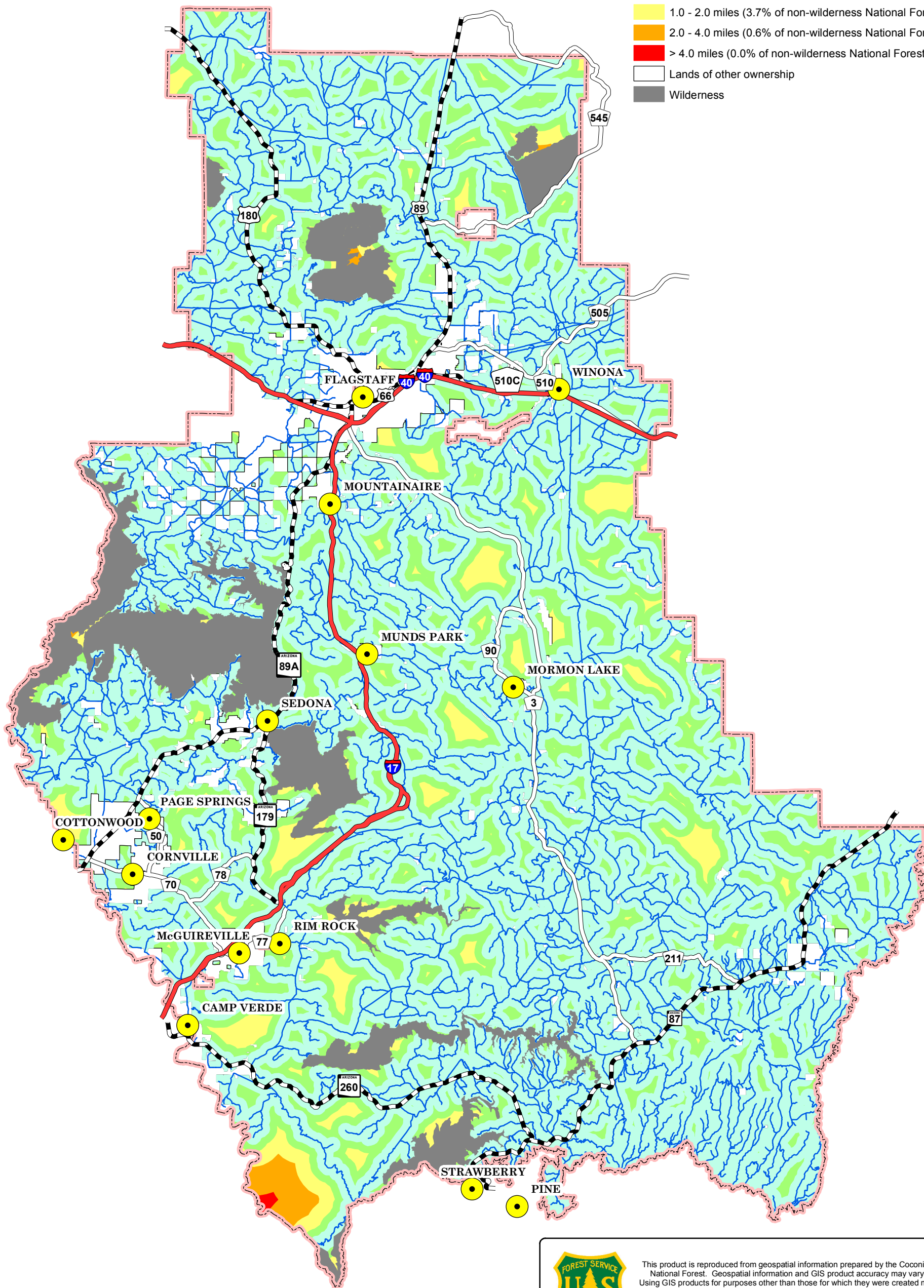
1.0 - 2.0 miles (3.7% of non-wilderness National Forest)

2.0 - 4.0 miles (0.6% of non-wilderness National Forest)

> 4.0 miles (0.0% of non-wilderness National Forest)

Lands of other ownership

Wilderness



This product is reproduced from geospatial information prepared by the Coconino National Forest. Geospatial information and GIS product accuracy may vary. Using GIS products for purposes other than those for which they were created may yield inaccurate or misleading results. Coconino National Forest reserves the right to correct, update, modify or replace GIS products without notification.

Carl Beyerhelm - 2-Dec-2010 - NAD 1983 UTM Zone 12