

USE OF VEHICLES OFF NATIONAL FOREST SYSTEM ROADS

Wannagan Creek Non Motorized Area  
Medora Ranger District  
Little Missouri National Grassland  
Dakota Prairie Grasslands

Pursuant to 36 C.F.R. 261.50(a), the following acts are prohibited on National Forest System Lands within the areas shown on the attached map. (Attachment A)

It is prohibited to possess or use a vehicle off National Forest System Roads.  
(36 C.F.R. 261.56)

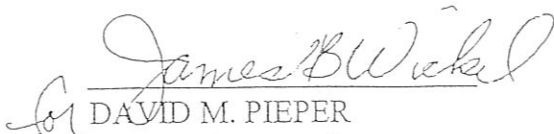
Pursuant to 36 C.F.R. 261.50(e), the following persons are exempt from this order:

1. Persons with a permit specifically authorizing the otherwise prohibited act or omission.
2. Any Federal, State, or local officer, or member of an organized rescue or fire fighting force in the performance of an official duty.
3. Lessees and holders of a Forest Service permit engaged in the administration of said permit.

Violations of these prohibitions are punishable by a fine of not more than \$5,000 for an individual or \$10,000 for an organization, or imprisonment for not more than 6 months or both (16 U.S.C. 551 and 18 U.S.C. 3559 and 3571).

THIS SPECIAL ORDER IS EFFECTIVE AUGUST 26, 2003.

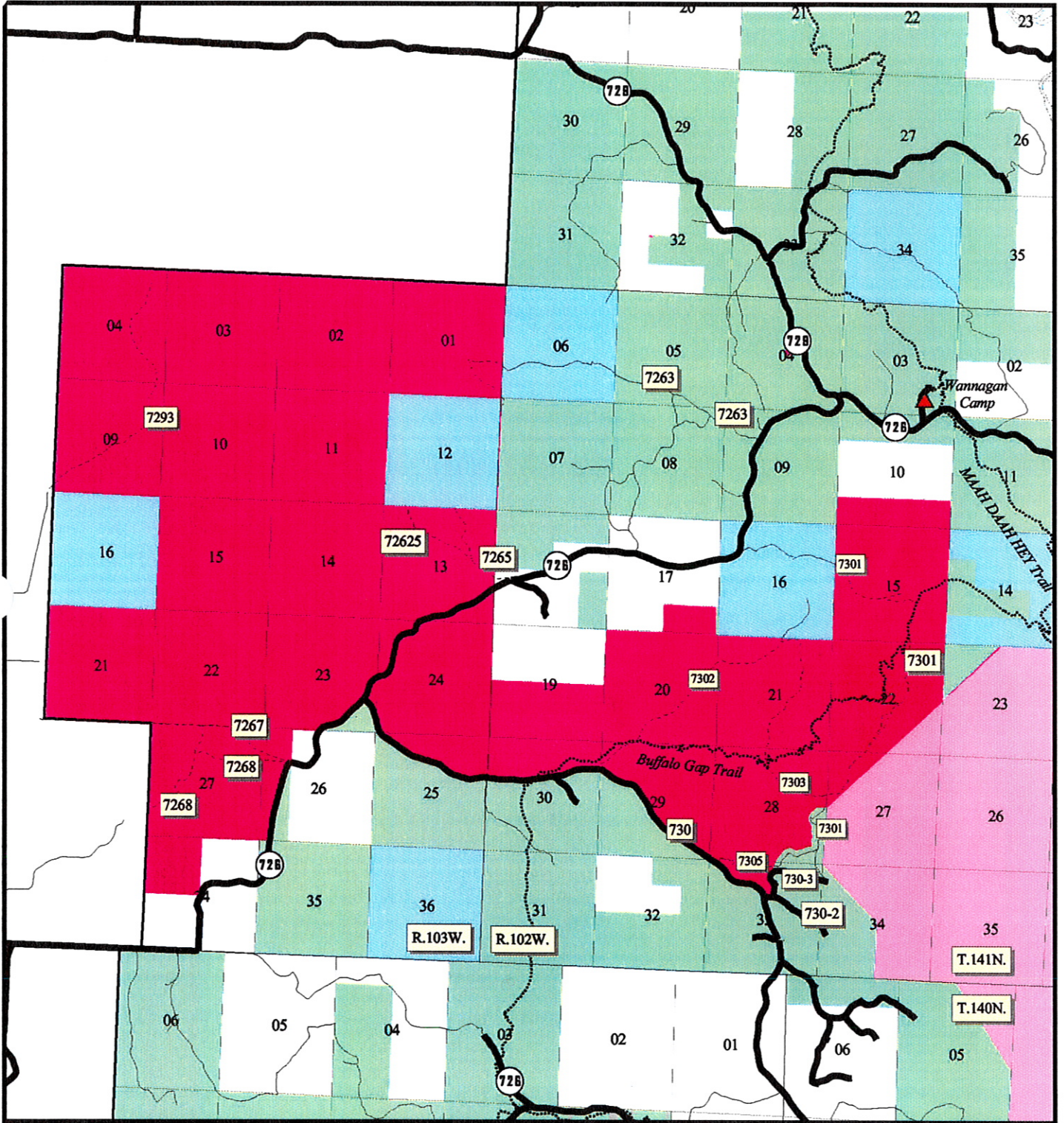
Done at Bismarck, North Dakota this 25<sup>th</sup> day of August, 2003

  
for DAVID M. PIEPER  
Grasslands Supervisor  
Dakota Prairie Grasslands

**Attachment A**  
**Motorized Vehicle and Road Closures**  
**Wannagan Creek Area**



*Medora Ranger District*  
*Little Missouri National Grassland*  
*Dakota Prairie Grasslands*



**Legend**

- |  |                       |  |                       |
|--|-----------------------|--|-----------------------|
|  | Non Restricted Roads  |  | Non-Motorized Areas   |
|  | FS Restricted Roads   |  | National Grasslands   |
|  | Hiking Trails         |  | National Park Service |
|  | Little Missouri River |  | State                 |
|  | Section Lines         |  |                       |



August 2003