

FOREST DEVELOPMENT TRAILS

Dakota Prairie National Grasslands

Pursuant to Title 36 Code of Federal Regulations (CFR) 261.50 (b), the following acts are prohibited on Forest Development Trail 7001 (Maah Daah Hey) as shown on the attached map.


1. Using any type of vehicle prohibited by the order. For the purpose of this order, this restriction applies to motorized vehicles on Forest Development Trail 7001 for the entire length of the trail from its origin in Section 34, Township 140 North, Range 102 West, to its terminus in Section 3, Township 147 North, Range 99 West.

Pursuant to 36 CFR 261.50.(e), the following are exempt from this order:

1. Persons with a permit specifically authorizing the otherwise prohibited act or omission.
2. Any Federal, State, or Local Officer or member of an organized rescue or fire fighting force in the performance of an official duty.

These prohibitions are in addition to the general prohibitions in 36 CFR Part 261, Subpart A.

Done at Bismarck, North Dakota this 7th day of June, 2001

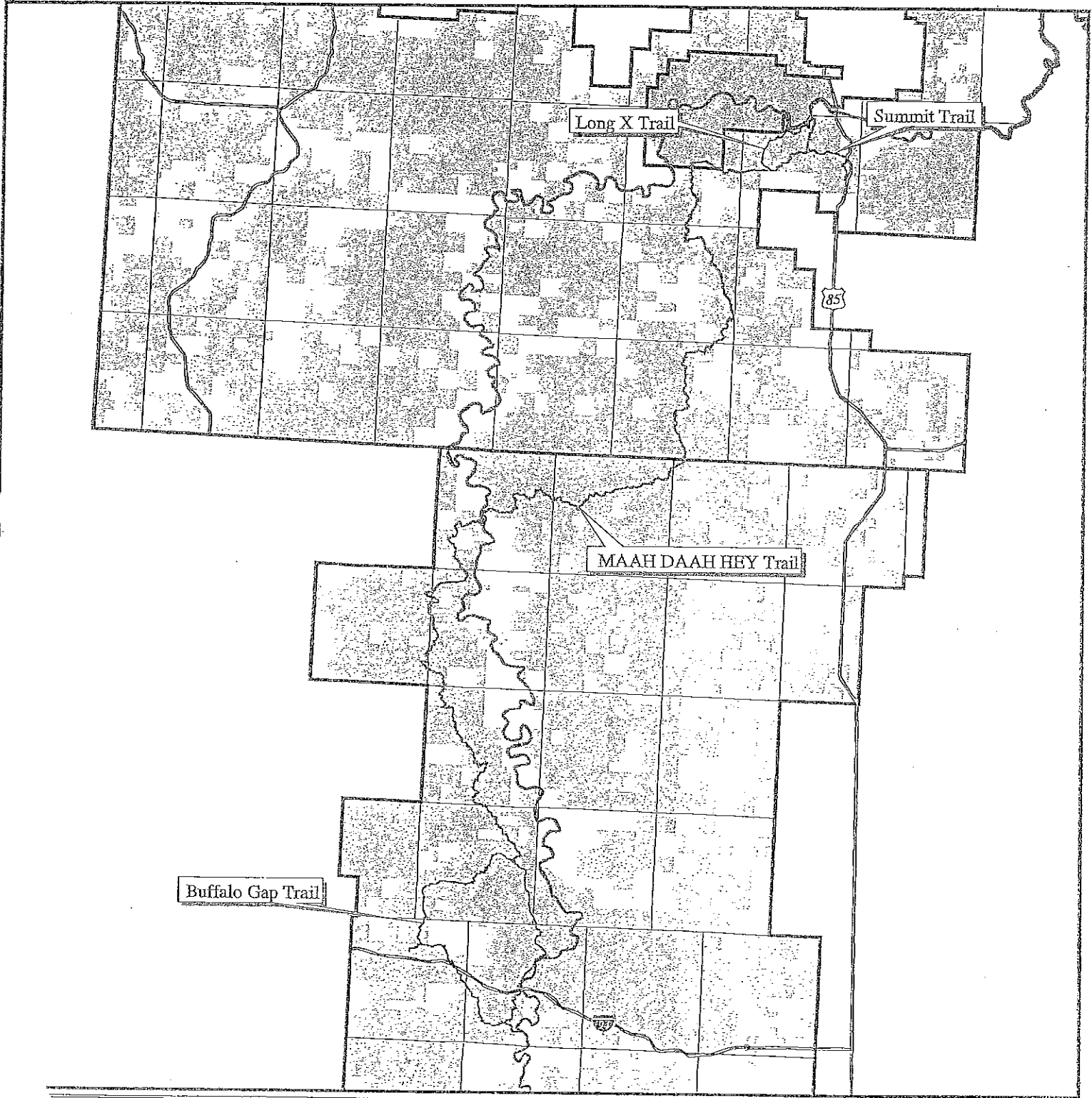

LARRY J. DAWSON
Grasslands Supervisor
Dakota Prairie National Grasslands

Violation of these prohibitions or the conditions of any permit issued there under is punishable by a fine of up to \$5000 for an individual or \$10,000 for an organization, or imprisonment for not more than 6 months, or both.
(16 USC 551 and 18 USC 3559 and 3571)

Attachment A
Motorized Vehicle Closures
MAAH DAAH HEY Trail



Medora and McKenzie Ranger District
Little Missouri National Grasslands
Dakota Prairie Grasslands



Legend

- | | |
|-----------------------------|-------------------------|
| — Motorized Vehicle Closure | • National Grasslands |
| — Trail System | • National Park Service |
| — Little Missouri River | • State Land Department |
| — Highways or Interstate | |

