

# UINTA-WASATCH-CACHE NATIONAL FOREST

## EVANSTON-MOUNTAIN VIEW RANGER DISTRICT

### 2023 FIREWOOD REGULATIONS



#### Slash Piling

- Branches and smaller material (slash) that is not going to be taken should be piled nearby.
- Ideal pile sizes are 6 feet in diameter and 4 feet tall.
- Leave space between piles and try to build piles away from live, green trees.
- Slash piling helps to reduce fuel build up and, thus, reduces the fire danger for the area.
- The Forest Service may dispose of the piles once an area has been thinned.
- The remaining piles will be left for wildlife nesting, denning, hiding habitat and escape cover.

#### Safety and other regulations

- Always wear or have the appropriate Personal Protective Equipment (PPE)
- Be aware of others working in the same area.
- Have proper spark arrestors on all equipment.
- **During Stage II Fire Restrictions use of a chainsaw is prohibited between 1:00 pm and 1:00 am.**
- Have a shovel and fire extinguisher nearby and obey any fire restrictions that may be in place.
- When cutting along roadways, keep vehicles on road but not blocking traffic.
- DO NOT block access to road with vehicles, trailers, campers, or felled trees.

#### Signs

- Areas designated with the following signs are CLOSED to firewood cutting\*



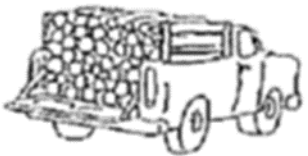
How much wood is in a cord?



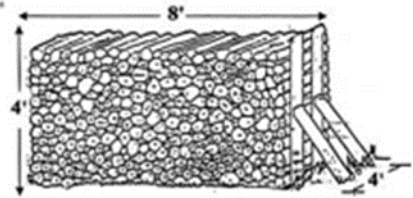
1/3 Cord (short bed)



1/2 Cord (short bed)



1 Cord (short bed)



One Cord (128 cubic feet)

Permits valid June 26 – November 17, 2023 for the entire District\*

\*Permits may be purchased starting June 26 at both Ranger Stations

\*Please note that adverse weather conditions or emergencies may further restrict the cutting season

#### What CAN be cut

- Dead standing trees and down woody materials may be removed from the forest for personal use.

#### What CANNOT be cut

- LIVE trees, fences and built improvements, any trees with signs, or trees within timber sales designated by a boundary of orange paint, signs, or listed on the attached map CANNOT be cut.

#### Where you CAN cut

- Fuelwood may be cut anywhere on the Evanston-Mountain View District except as noted below and on the map.
- Highway legal vehicles may travel up to 150 feet from the center line of designated routes when gathering firewood as permitted by a firewood permit.

#### Where you CANNOT cut

- DO NOT cut firewood within 300 feet of streams, rivers, riparian areas, or any oil development or equipment on the Mountain View side (Oil development area is on Mountain View side map).
- Firewood cutting is NOT allowed in campgrounds, administrative sites, trailheads, on private land, in timber sales, or in areas designated by on the ground signs (see "signs")

#### Stump and size regulations

- All firewood greater than 7 feet in length must be cut every 4.5 feet at least halfway through the log.
- Stump heights must be 12 inches or less.