

Hiawatha NF TAP West Zone Draft Review

Panel 4 (Dukes / Grand Island)

Legend

Forest Service System Roads

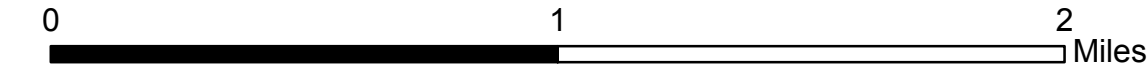
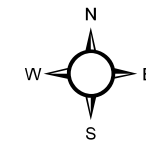
OPERATIONAL MAINTENANCE LEVEL

- 1 - CLOSED (Basic Custodial Care)
- 2 - High Clearance Vehicles ("two-track")
- 3 - Suitable for Passenger Cars
- 4/5 - Built for User Comfort

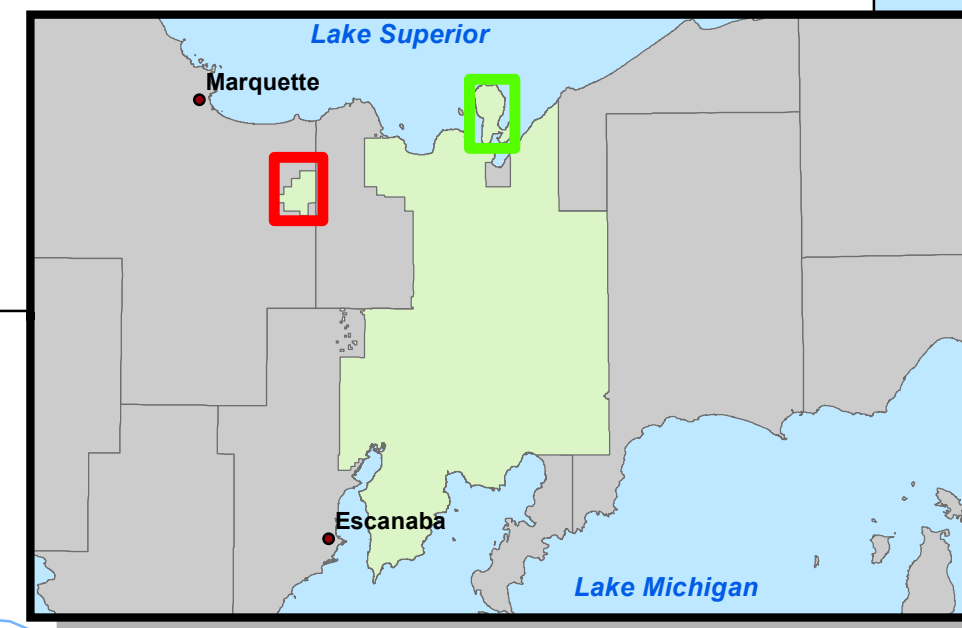
Ownership

- NON-FS
- USDA FOREST SERVICE

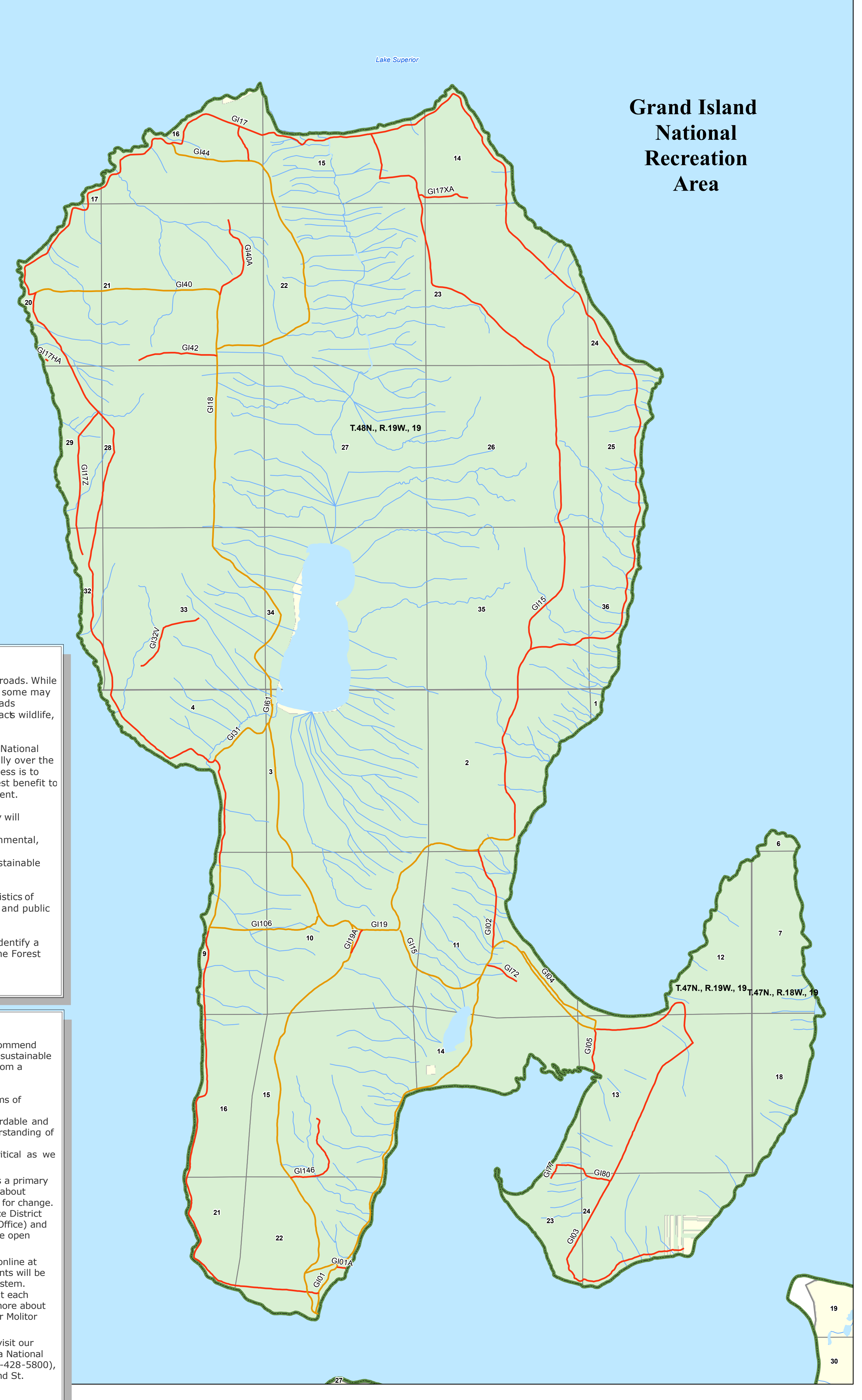
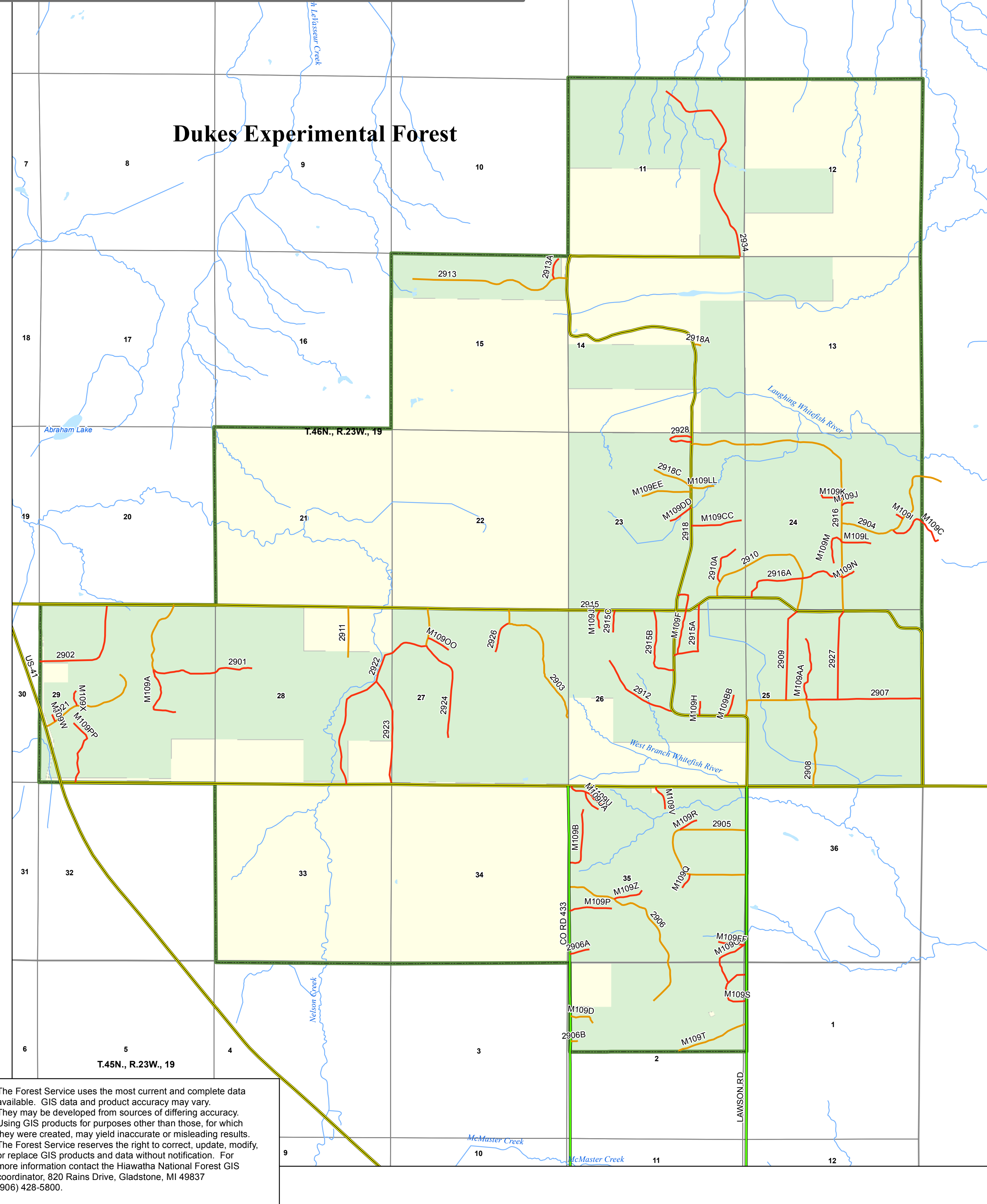
- Lake, Pond, Reservoir, Estuary
- River/Stream
- Forest Boundary
- Section
- Township
- Wilderness



Document Name: TAPriballinput_WestZoneDraftPanel4_Dsize



Grand Island National Recreation Area



National Forest Begins Road Study

The Hiawatha National Forest includes more than 2000 miles of roads. While many Forest roads provide land management and user benefits, some may also pose risks to forest resources. Increased use of an aging roads infrastructure increases safety risks and maintenance costs, impacts wildlife, and contributes to degradation of water quality.

Even as maintenance needs have increased, funding to maintain National Forest system roads across the country has decreased dramatically over the past several years. The goal of the national Travel Analysis Process is to define safe, fiscally feasible road systems that provide the greatest benefit to the largest number of visitors with the least risk to the environment.

In order to move closer to a sustainable road system, the agency will conduct a science-based road study on each forest in order to:

- Analyze each unit's road system in connection with environmental, financial, and social risks and benefits; and
- Develop road opportunities that can approach a fiscally sustainable road system

Each Forest will gather information about the uses and characteristics of existing system roads, including need for management activities and public access, benefits, environmental risks, and maintenance costs.

The information we gather will be used in the future to help us identify a minimum road system that serves the needs of the public and the Forest Service at a cost we can afford to maintain over time.

National Forest Begins Road Study

We invite the public to review the road system with us to help recommend opportunities that lead to a safe, affordable and environmentally sustainable road system. We encourage anyone who uses roads or benefits from a national forest to share ideas for a sustainable road system.

- Ideas may be shared online, in person, or through other forms of communication.
- It is critical for all parties to work together toward an affordable and environmentally sustainable road system, with a full understanding of associated trade-offs.
- Continued participation by the public and partners is critical as we work toward identifying a minimum road system.

The Hiawatha National Forest will host four public open houses as a primary opportunity to share available data and gather citizen information about access needs and benefits, problems and risks, and opportunities for change. The open houses will be held from 3 -6 p.m. on June 11 (St. Ignace District Office), June 12 (Sault Ste. Marie), June 18 (Rapid River District Office) and June 23 (Munising District Office). For more information about the open houses, visit our web page or call 906 -428-5800.

In addition to the open houses, the public can submit information online at <http://tinyurl.com/Hiawatha-Tapcomments>. Public comments will be used to identify opportunities for potential changes to the road system. Hardcopy maps and comment forms are also available for review at each Ranger District office and the Forest Supervisor's office. To learn more about the Hiawatha's road study process, contact project manager Ginger Molitor at 906-428-5800.

For more information about the Hiawatha National Forest, please visit our website www.fs.usda.gov/Hiawatha, or call or visit a Hiawatha National Forest office near you. Our offices are located in Gladstone (906 -428-5800), Rapid River (906 -474-6442), Sault Ste. Marie (906 -635-5311) and St. Ignace (906-643-7900).

The Forest Service uses the most current and complete data available. GIS data and product accuracy may vary. They may be developed from sources of differing accuracy. Using GIS products for purposes other than those, for which they were created, may yield inaccurate or misleading results. The Forest Service reserves the right to correct, update, modify, or replace GIS products and data without notification. For more information contact the Hiawatha National Forest GIS coordinator, 820 Rains Drive, Gladstone, MI 49837 (906) 428-5800.