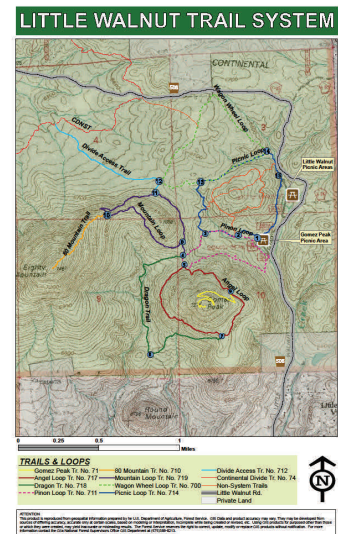


Recreation Opportunities

Little Walnut Picnic Ground and the Gomez Peak / Little Walnut Trail System



Little Walnut Day-Use Area: Picnic Grounds and Trail System

This booklet describes recreational opportunities very close to Silver City: the Little Walnut Day-Use area and trails in the near vicinity.

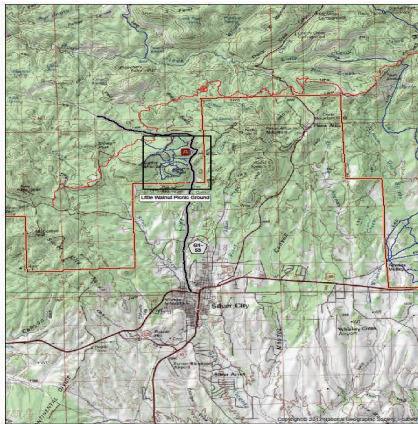
Descriptions of wildlife viewing opportunities, scenic areas, multiple use picnic sites, and single-track trails are included in this issue.

Gila National Forest

Silver City Ranger District
3005 E. Camino del Bosque
Silver City, NM 88061

Phone: 575-388-8201
Fax: 575-388-8204
Email: info@fs.fed.us

General Location of the Little Walnut Picnic Grounds



We're on the web:

<http://www.fs.usda.gov/gila/>



**Silver City Ranger
District, Gila National
Forest**

Little Walnut Picnic Ground and the Gomez Peak / Little Walnut Trail System

DIRECTIONS FROM SILVER CITY:

From the junction of U.S. Hwy. 180 West and Little Walnut Road (G1-53) in Silver City, travel north on Little Walnut Road for 4.2 miles (6.7 km) to the forest boundary. Continue on this route (also called Forest Road 506) for .8 miles (1.3 km) to the main picnic area located on the west side of the road. Group use area East and West are located within the main grounds adjacent to the individual or family use sites. Gomez Peak Group Area is located approximately ¼ mile south of the entrance to the main picnic grounds, also on the west side of the road.

Gate Schedule:

<u>GATE SCHEDULE</u> <i>LITTLE WALNUT PICNIC GROUND</i>	<u>OPENS</u>	<u>CLOSES</u>
January 1 st through February 28 (winter schedule)	9:00 a.m.	4:00 p.m.
In Leap Years: January 1 st through February 29	9:00 a.m.	4:00 p.m.
March 1 st through March 31 st	9:00 a.m.	6:00 p.m.
April 1 st through Friday before Memorial Day	8:00 a.m.	7:00 p.m.
Saturday before Memorial Day through 2 nd Friday in August (summer schedule)	8:00 a.m.	8:00 p.m.
2 nd Saturday in August through September 30 th	8:00 a.m.	7:00 p.m.
October 1 st through October 31 st	9:00 a.m.	6:00 p.m.
November 1 st through December 31 st (winter schedule)	9:00 a.m.	4:00 p.m.

Little Walnut Picnic Ground - Individual / Family Picnicking

Little Walnut Picnic Grounds provide a shady and restful area for small to medium size group, family, or individual daytime gatherings. The Picnic Grounds are **day-use only** and the gates are closed at dusk. See page 5 for seasonal gate hours.

The Picnic Grounds are available on “first come, first served” basis and are free of charge. Facilities include 15 individual picnic tables. Each table site is accompanied with a pedestal grill. Vault toilets and trash cans are conveniently located within the area.

No firewood is available within the Picnic Grounds, and campfires are not permitted within the Picnic Ground boundary. Guests who plan to use the grills must bring charcoal or wood for cooking. Pets are welcome but must be restrained on a leash. Please remember to clean up after your pet. Horses are not permitted in the Picnic Ground area.

Please note: Groups with more than 10 guests are strongly encouraged to reserve a group-use area. Contact the Silver City Ranger District Office to make your reservation: 575-388-8201

Summary

Type of Camping	None	Fee	\$0
Open Season	Year Round	Host	Yes
Stay Limit	Day Use only	Reservations	No
Toilets	2 Vault	Horse Corrals	No
Potable Water	No		
BBQ Grills	15		
Tables	15		

Elevation: 6,600 ft.

Max trailer length: Large trailers & motor homes are not recommended.

Gomez Peak Picnic Area and Pavilion (Large Group Area)

The Gomez Peak Large Group Area, which is just south of the main picnic grounds, is an ideal setting for large gatherings. It will accommodate up to 200 people with parking for up to 50 vehicles. Facilities include a large covered pavilion, 12 picnic tables, oversized pedestal grills, vault toilets, trash cans, volleyball court, horseshoe pits, adjacent large open field, and immediate access to area hiking trails.

No firewood is available and campfires are prohibited. Guests planning to use the grills should bring charcoal or wood for their cooking needs. This facility is for **day-use only** and camping is prohibited. Pets are welcome but must be restrained on a leash. Please remember to clean up after your pet. Horses are not permitted in the Picnic Ground area.

The site rental fee must be paid at the time of reservation and is non-refundable. A key deposit, paid at the time of reservation, is refundable upon return of the keys.

Contact the Silver City Ranger District Office to make your reservation: 575-388-8201

Summary

Type of Camping	None	Fee	\$40
Open Season	Year Round	Host	Yes
Stay Limit	Day Use only	Reservations	Yes
Toilets	2 Vault	Horse Corrals	No
Potable Water	No		
BBQ Grills	2 large		
Tables	12		

Elevation: 6,600 ft.

Max trailer length: Large trailers & motor homes are permitted. The Gomez Peak Group Area parking lot is large enough to permit pull-through or backing.



Little Walnut EAST Group Area

Little Walnut Picnic Ground - EAST Group Area provides a shady and restful area for group or family daytime gatherings. The Picnic Grounds and Group Areas are **day-use only** and the gates are closed at dusk. See page 5 for seasonal gate hours.

The Little Walnut EAST Group Area can accommodate up to 75 people with parking enough for 15 vehicles. Facilities include 10 picnic tables, 1 serving table (no benches), 4 pedestal grills, a vault toilet, trash cans and immediate access to area hiking trails.

No firewood is available within the Picnic Grounds, and campfires are not permitted within the Picnic Ground boundary. Guests who plan to use the grills must bring charcoal or wood for cooking. Pets are welcome but must be restrained on a leash. Please remember to clean up after your pet. Horses are not permitted in the Picnic Ground area.

The site rental fee must be paid at the time of reservation and is non-refundable. A key deposit, paid at the time of reservation, is refundable upon return of the keys. Contact the Silver City Ranger District Office to make your reservation: 575-388-8201

Summary

Type of Camping	None	Fee	\$25
Open Season	Year Round	Host	Yes
Stay Limit	Day Use only	Reservations	Yes
Toilets	1 Vault	Horse Corrals	No
Potable Water	No		
BBQ Grills	4		
Tables	10		

Elevation: 6,600 ft.

Max trailer length: Large trailers & motor homes are permitted but must be parked within the perimeter of the East Group parking lot.

Little Walnut WEST Group Area

Little Walnut Picnic Ground - WEST Group Area provides a shady and restful area for group or family daytime gatherings. The Picnic Grounds and Group Areas are **day-use only** and the gates are closed at dusk. See page 5 for seasonal gate hours.

The Little Walnut WEST Group Area can accommodate up to 50 guests with enough parking for 10 vehicles. Facilities include 8 picnic tables, 3 pedestal grills, a vault toilet, trash cans, and access to area hiking trails.

No firewood is available within the Picnic Grounds, and campfires are not permitted within the Picnic Ground boundary. Guests who plan to use the grills must bring charcoal or wood for cooking. Pets are welcome but must be restrained on a leash. Please remember to clean up after your pet. Horses are not permitted in the Picnic Ground area.

The site rental fee must be paid at the time of reservation and is non-refundable. A key deposit, paid at the time of reservation, is refundable upon return of the keys. Contact the Silver City Ranger District Office to make your reservation: 575-388-8201

Summary

Type of Camping	None	Fee	\$20
Open Season	Year Round	Host	Yes
Stay Limit	Day Use only	Reservations	Yes
Toilets	1 Vault	Horse Corrals	No
Potable Water	No		
BBQ Grills	3		
Tables	8		



Gomez Peak / Little Walnut Trail System

The Gomez Peak / Little Walnut Trail System is a system of 9 trails that encompass various loops and feeders concentrated within 4 square miles. Situated close to town, it is a favorite recreation spot for local hikers, equestrians and cyclist as well as out-of-town visitors. In fact, many users visit these beautiful trails on a daily basis. Like the Little Walnut Picnic Grounds, this trail system is **day-use only**. Camping and campfires are prohibited.

The trails are organized to loop and interconnect. Major junctions are numbered and signed. A locator map is posted at these junctions; each features north arrow that is positioned/oriented to face north. It is a good idea to carry a compass since trails sometimes loop and curve back into other trails.

Please stay within your comfort and experience level while exploring the trails. It is also a good idea to carry water, snacks, and warm clothing even while day hiking. Be prepared for weather changes. Pets are welcome but must be restrained on a leash. Please remember to clean up after your pet. The Gomez Peak / Little Walnut Trail System map is on page 5 of this booklet.

Summary

Type of Camping	None	Fee	None
Open Season	Year Round	Host	Yes
Stay Limit	Day Use only	Reservations	No
Toilets	In Picnic Grounds	Horse Corrals	No
Potable Water	No		
BBQ Grills	In Picnic Grounds		
Tables	In Picnic Grounds		

Elevation: 6,600 ft.

Max trailer length: Large trailers & motor homes are permitted only in the Gomez Peak Trailhead parking area.



Please Be Considerate...

This trail system is used by a variety of different users on a daily basis. Please follow these guidelines to ensure that the area continues to provide the recreation experiences that we all value.



Be aware that there are *many* trails in the Little Walnut Trail System. Some of the routes are Forest Service Trails, but many are user created trails. Not all of the trails you come across will be marked or referenced on the junction signs.



Dogs are allowed on the trail system; however, owners must have control over their pets. Please restrain pets on a leash at all times, and remember to clean up after your pet.



Bicycles are allowed. In order to limit user conflicts on the trails, we ask that bicyclists yield to hikers when possible.



Equestrians are also welcome on the system. Equestrians are warned that some of the trails are not suited for all horses. The trail up Gomez Peak is not recommended for horseback riding.



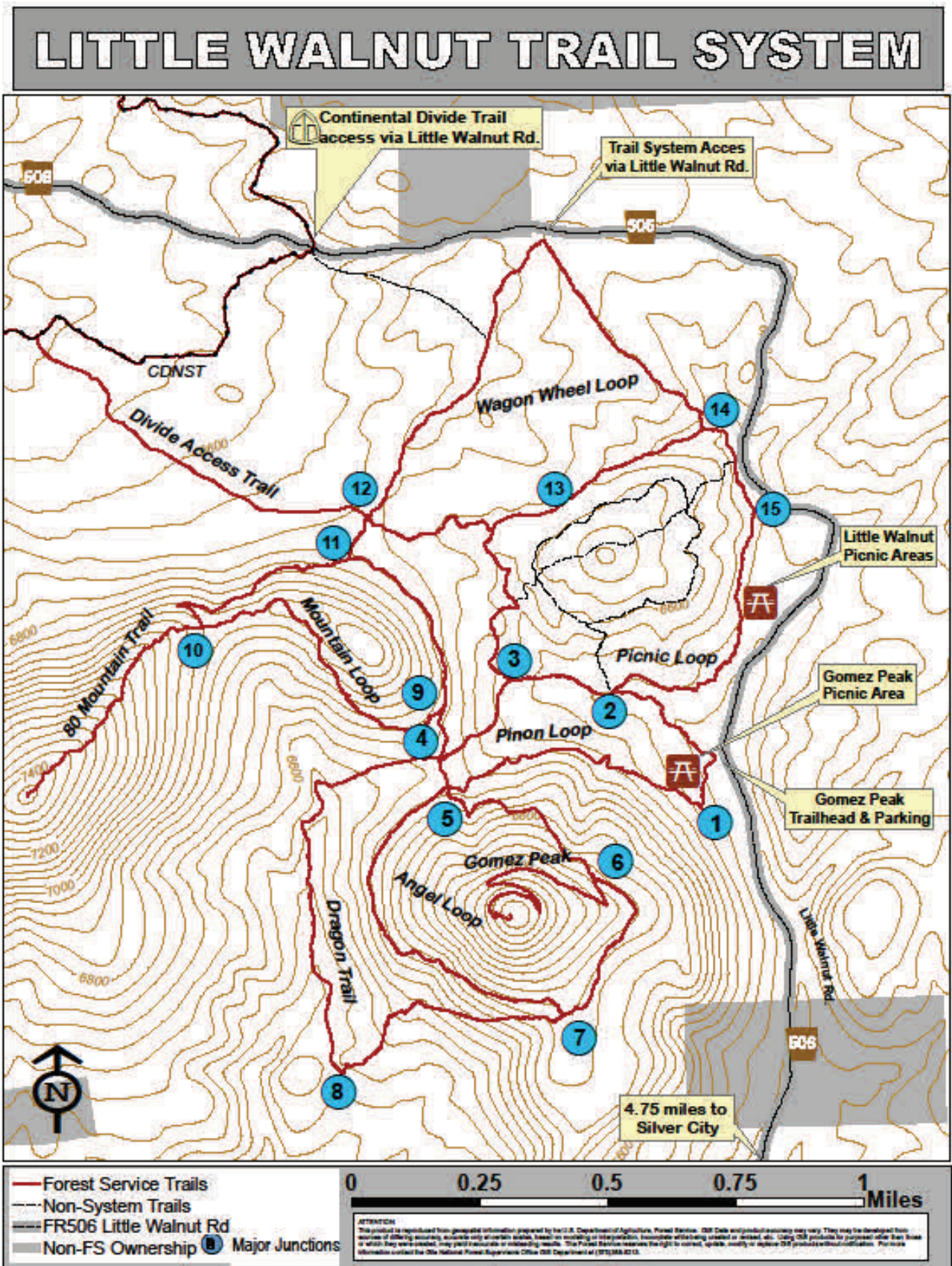
Shooting is not allowed within 150 yards of the Little Walnut or Gomez Peak Picnic Grounds. It is also against the law to shoot over a forest road or trail.



Please be thoughtful about where and how you park at the Trailheads. Don't block other users from entering or exiting the area.



Thank you for your consideration. Enjoy this beautiful area.

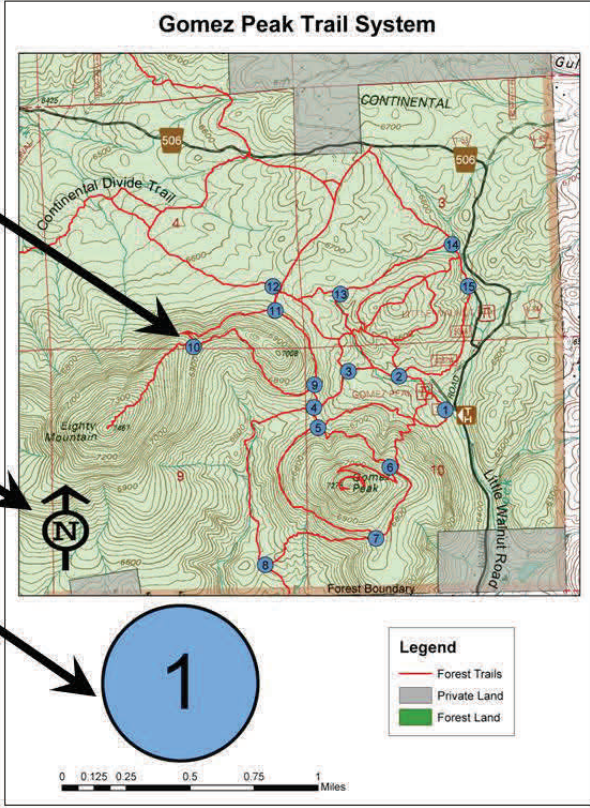


Signs are placed at major junctions throughout the trail system. The junctions are numbered and indicated on the map by a blue circle.

Maps that you encounter at major junctions are oriented to the North. It's smart to carry a compass.

This number serves as a "You are here" indicator.

Please stay within your comfort and experience level while exploring these trails. It is easy to get turned around and no one will hear you scream.



Access to the Continental Divide National Scenic Trail (CDNST)

The Gomez Peak / Little Walnut Trail System interfaces with the Continental Divide National Scenic Trail by way of the Divide Access Trail No. 712. This allows easy access to the CDNST close to town.

The Gomez Peak / Little Walnut Trail System map is on page 5 of this booklet. The Divide Access Trail No. 712 is just west of trail junction number 12. Since the Divide Access Trail is within the perimeter of the Gomez Peak / Little Walnut Trail System, it is considered as **day-use only**. Camping and campfires are prohibited.

Remember to plan your hike or ride carefully; stay within your comfort and experience level while exploring the trails. It is a good idea to carry water, snacks, and warm clothing even while day hiking. Be prepared for weather changes. Make sure accompanying pets are under restraint - even in the back country. Practice common courtesy and good trail etiquette by yielding to equestrians first, hikers second, and finally cyclists.

Summary

Type of Camping	Disbursed camping along the CDNST	Fee	None
Open Season	Year Round	Host	Yes
Stay Limit	Day Use within the Little Walnut Area	Reservations	No
Toilets	In Picnic Grounds	Horse Corrals	No
Potable Water	No		
BBQ Grills	In Picnic Grounds		
Tables	In Picnic Grounds		

Elevation: 6,600 to 7,200 ft.

Difficulty level: Most trails in the Gomez Peak / Little Walnut Trail System are within the easy to moderate range. Gomez Peak Trail is difficult.



Trail Information - Gomez Peal / Little Walnut Trails

<u>ANGEL LOOP TRAIL NO. 717</u>		
<ul style="list-style-type: none"> • Relatively few elevation changes • Difficulty level: moderate 	<ul style="list-style-type: none"> • Length: 1.5 miles • Popular with hikers & cyclists • Western portions of this loop are unshaded and very hot in summer. 	
<u>PIÑON LOOP TRAIL NO. 711</u>		
<ul style="list-style-type: none"> • Open, lightly wooded • Difficulty level: easy 	<ul style="list-style-type: none"> • Length: 1.5 miles • Popular with hikers and cyclists 	
<u>GOMEZ PEAK TRAIL NO. 71</u>		
<ul style="list-style-type: none"> • Steep and rocky terrain • Difficulty level: difficult/strenuous 	<ul style="list-style-type: none"> • Length: 1 mile • Scenic view from top of peak • NOT a loop trail: out & back 	<ul style="list-style-type: none"> • Popular with hikers; few cyclists • Not suited for equestrians
<u>DRAGON TRAIL NO. 718</u>		
<ul style="list-style-type: none"> • Steep and rocky terrain • Difficulty level: difficult 	<ul style="list-style-type: none"> • Length: 1.75 miles • Not heavily used 	<ul style="list-style-type: none"> • Unshaded and hot in summer • May form a loop with Angel Tr.
<u>PICNIC LOOP TRAIL NO. 714</u>		
<ul style="list-style-type: none"> • Shaded, few elevation changes • Difficulty level: easy to moderate 	<ul style="list-style-type: none"> • Length: 2.5 miles • Popular with hikers and cyclists • Frequent wildlife sightings 	<ul style="list-style-type: none"> • Trailhead is found in main campground at north end cul-de-sac
<u>WAGONWHEEL LOOP TR. NO. 700</u>		
<ul style="list-style-type: none"> • Mostly open, shaded, sandy • Difficulty level: easy 	<ul style="list-style-type: none"> • Length: 2 miles • Popular with hikers, cyclists, and equestrians 	<ul style="list-style-type: none"> • Frequent wildlife sightings • Alternate entrance from Little Walnut Rd. at Wagon Wheel subdivision
<u>MOUNTAIN LOOP TR. NO. 719</u>		
<ul style="list-style-type: none"> • Steep, rocky, shaded terrain • Difficulty level: difficult 	<ul style="list-style-type: none"> • Length: 1.7 miles • Popular with hikers; seldom used by cyclist or equestrians 	<ul style="list-style-type: none"> • Provides the only access to the peak of 80 Mountain
<u>80 MOUNTAIN TRAIL NO. 710</u>		
<ul style="list-style-type: none"> • Steep, rocky, unshaded terrain • Difficulty level: difficult 	<ul style="list-style-type: none"> • Length: 0.5 mile • Not heavily used due to difficulty 	<ul style="list-style-type: none"> • NOT a loop trail: out & back • Great views from the top
<u>DIVIDE ACCESS TR. NO. 712</u>		
<ul style="list-style-type: none"> • Mostly open and shaded • Difficulty level: easy 	<ul style="list-style-type: none"> • Length: 1 mile • Popular with hikers, cyclists and equestrians 	<ul style="list-style-type: none"> • Provides access from Little Walnut Picnic Grounds to the CDNST

