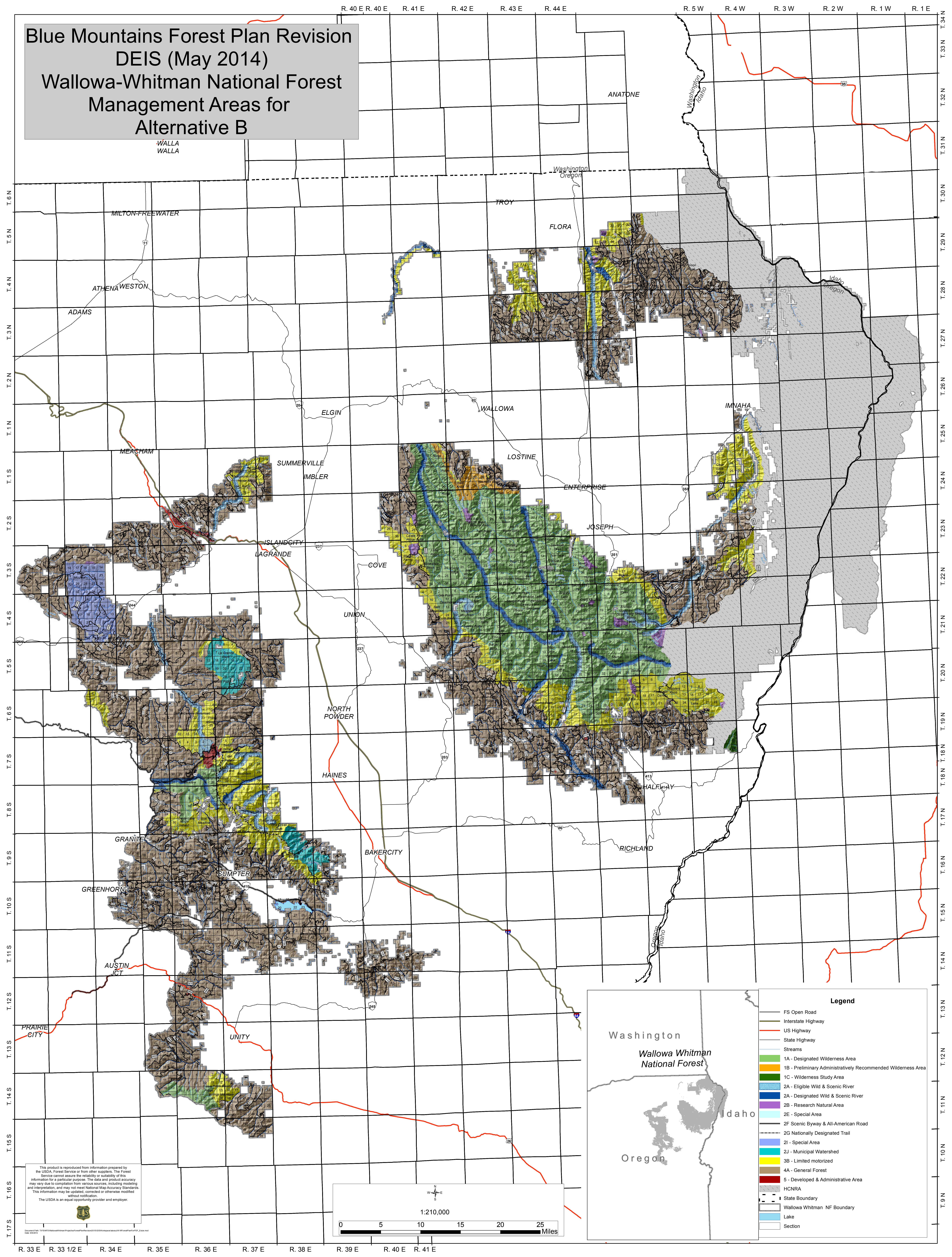
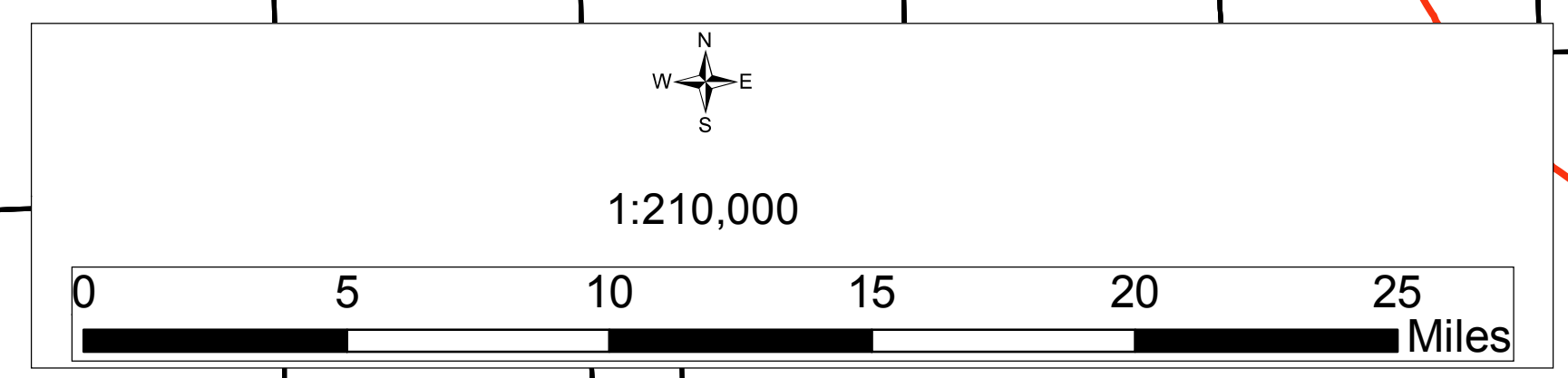


# Blue Mountains Forest Plan Revision DEIS (May 2014) Wallowa-Whitman National Forest Management Areas for Alternative B



This product is reproduced from information prepared by the USDA, Forest Service or from other suppliers. The Forest Service cannot assure the reliability or suitability of this information for a particular purpose. The date and product accuracy may vary due to compilation from various sources, including modeling and interpretation, and may not meet National Map Accuracy Standards. This information may be updated, corrected or otherwise modified without notification. The USDA is an equal opportunity provider and employer.



### Legend

- FS Open Road
- Interstate Highway
- US Highway
- State Highway
- Streams
- 1A - Designated Wilderness Area
- 1B - Preliminary Administratively Recommended Wilderness Area
- 1C - Wilderness Study Area
- 2A - Eligible Wild & Scenic River
- 2A - Designated Wild & Scenic River
- 2B - Research Natural Area
- 2E - Special Area
- 2F - Scenic Byway & All-American Road
- 2G - Nationally Designated Trail
- 2I - Special Area
- 2J - Municipal Watershed
- 3B - Limited motorized
- 4A - General Forest
- 5 - Developed & Administrative Area
- HCNRA
- State Boundary
- Wallowa Whitman NF Boundary
- Lake
- Section