



Blue Mountain Forest Plan Revision DEIS

Social Well Being



Social and Economic components cannot be separated from Ecological systems



Hunting and Fishing

- Identified as the number one primary activity in the Blue Mountains by the 2003 NVUM
- The Desired Condition for the plan is to provide a mix of opportunities that foster hunting and fishing, and to support the state agencies that manage populations.



Old Forest

- People find old forests aesthetically pleasing, ecologically important, intrinsically and economically valuable, and necessary for a resilient and sustainable landscape.
- The desired condition for old forest is guided by other ecological desired conditions (stand density, plant species composition, fire regime condition, wildland fire, and landscape patterns)



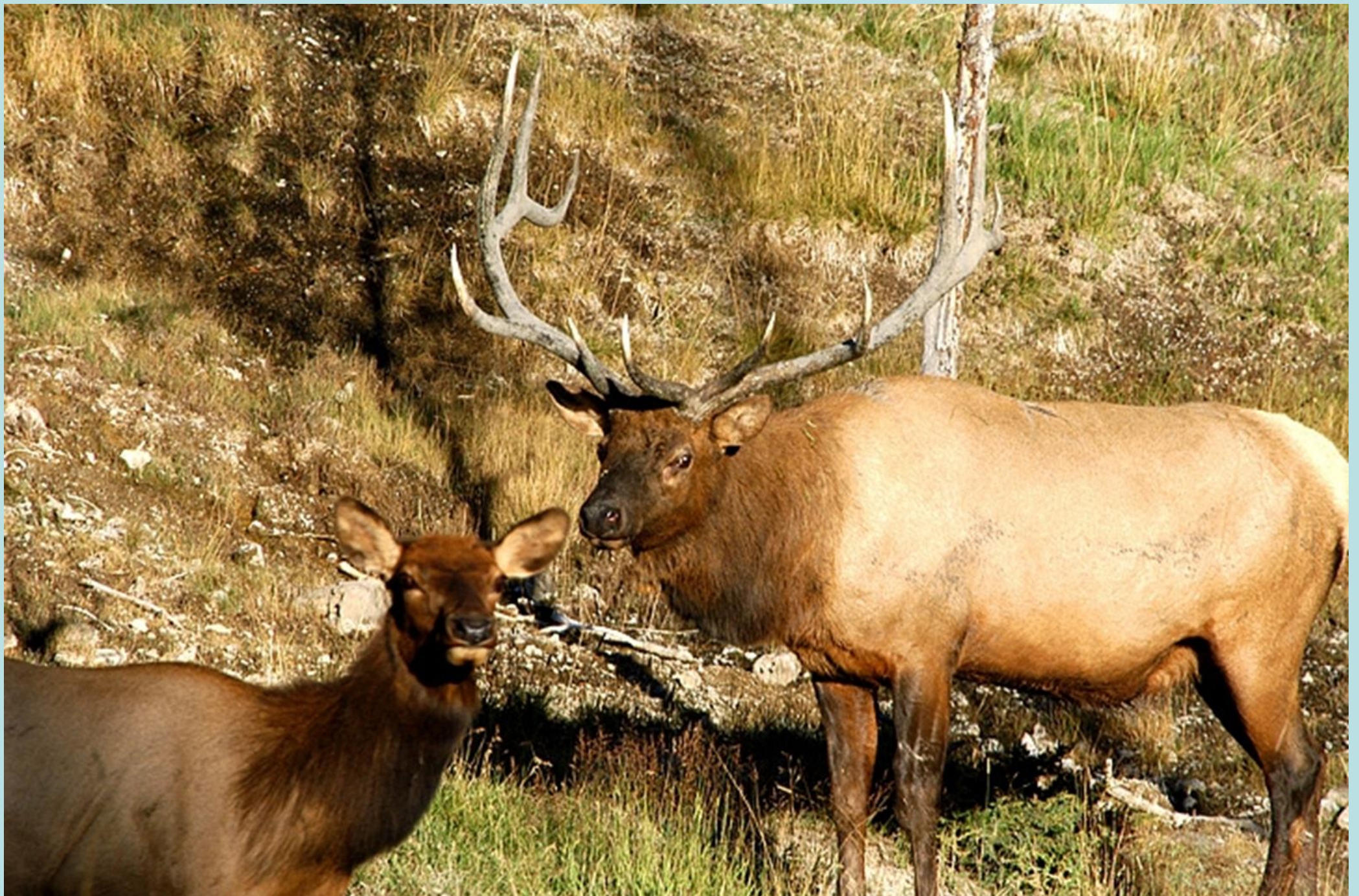
Scenery

- Valued as a backdrop for the activities and experiences that create memories and meet expectations of national forest visitors
- The Desired Condition for the plan is to maintain scenic integrity and stability through use of the scenery management system.



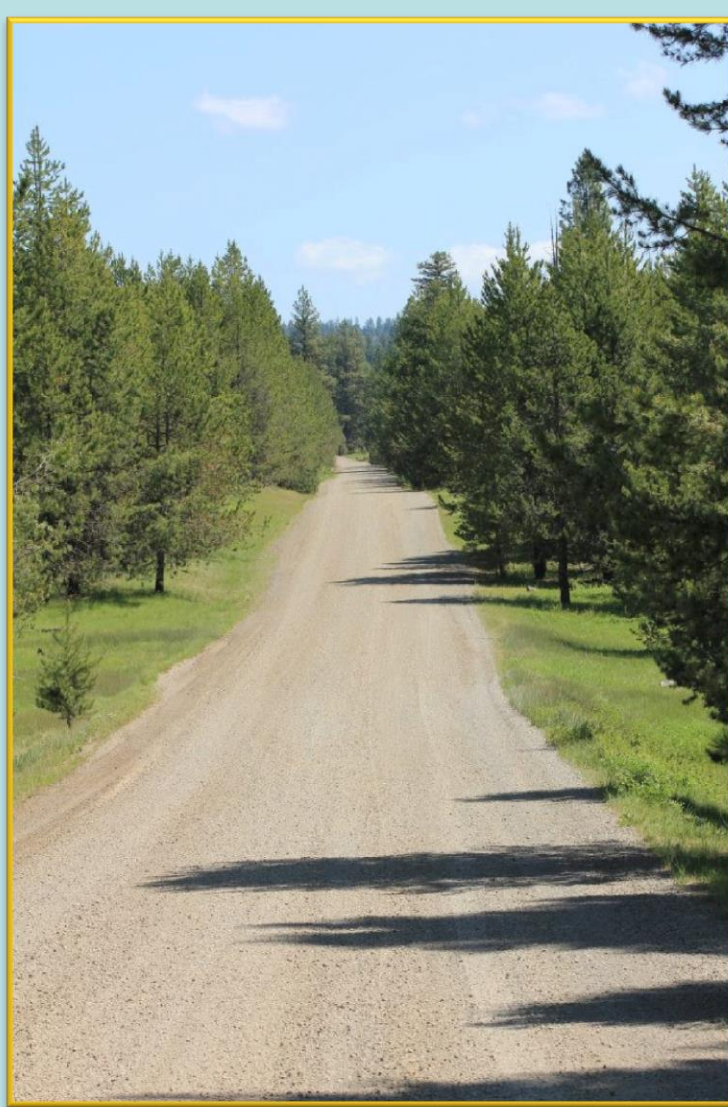
Blue Mountains National Forest Plan Revision-Social Well Being

Addressing ecological needs will support social systems



Rocky Mountain Elk

- Value of elk hunting with the Blue Mountains ranges between 17 and 20 million dollars per year
- The desired condition emphasized closing roads and trails to motor vehicles within landscapes that are flat and open
- Less emphasis is put on closing roads within landscapes that are steep or provide more cover



Roads and Trails Access

- Maintenance of current road systems, to provide safe access, is not sustainable given the current funding level.
- The desired condition includes a system of roads, trails, and areas designated for nonmotorized and motor vehicle use.
- Road systems are safe and responsive to public needs and desires, are affordable and efficiently managed and have minimal effect on aquatic and terrestrial systems.



Community Resilience

- Resiliency refers to the ability of communities and cultures to adapt to changing ecological, social, and economic conditions
- Under the desired condition the national forests foster healthy and resilient communities by providing sustainable ecological services or products.



Blue Mountains National Forest Plan Revision-Social Well Being

A complex set of social values can be tied to natural resources in our national forests



Recreation

- The Forest Service manages three types of recreation, developed, dispersed, and backcountry.
- Under the desired condition, there would be recreation opportunities for all skill and ability levels
- All new facilities will be a contemporary rustic design constructed of native durable materials.



Wild Horses

- Managed under the Wild Free-Roaming Horses and Burros Act
- The desired condition includes a viable, free-roaming wild horse herd that is genetically diverse and is in ecological balance with other approved multiple uses.



Cultural Resources and Culturally Significant Foods

- The desired condition includes National Forest System lands are available for tribal members to exercise their reserved rights.
- Another desired condition is that culturally significant foods are available and accessible and are sustained by the ecological and cultural processes under which they historically developed