


# Sky High

## Feather River Ranger District



### General Information

Mileage	1.5 miles one way
Elevation Change	3500 feet to 2400 feet
Difficulty	 (moderate)
Use Level	Light
Quad Map	Brush Creek
Location	NW1/4Sec26 T22N R6E MDBM



### Access

Depart: From Oroville at Oro-Dam Blvd. / Hwy 70

Turn:	Road Name/Description:	Miles:	Notes/Sights
RIGHT	Oro-Quincy Hwy (162)	31.3	
RIGHT	Road # 23N60	0.5	To China Gulch
RIGHT	Road # 22N60F	0.4	Dirt road at clear cut area
LEFT	Trailhead (unmarked)	0.2	Identified by log borders

### Note:

Open water sources are easily contaminated by human or animal waste. Water from springs, lakes, ponds, and streams should be properly treated before drinking. One recommended method of treatment is to bring clear water to a rolling boil for five minutes.

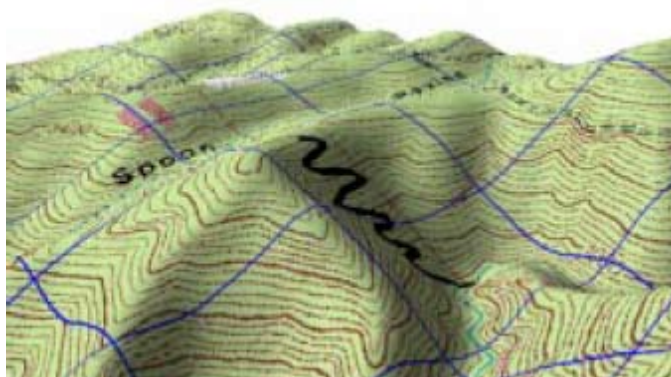
### Trail Description

Sky High could be your refuge from the summer heat. Take this shady journey down the canyon to the Little North Fork of the Feather River. At the base of Sky High, the water pools into a wonderful hole for swimming. Have a picnic or just relax on the large flat rocks along the banks. The remains of an old mining bridge cross the river at this location. The roads to the trailhead are in good condition, making this trail easily accessible.

*(The trail is generally open from mid-April to mid-December, snow and road conditions permitting.)*

### Be Aware:

Remote area (Bring a first aid kit)  
River is fast and cold early in season  
This is a mining area. Please be respectful of the miner's possessions.



### Feather River Ranger District

875 Mitchell Avenue  
Oroville, California 95965

(530) 534-6500

### Challenge Visitor Center

(530) 675-1146

### All are Welcome

The U.S. Department of Agriculture (USDA) prohibits discrimination in all its programs and activities on the basis of race, color, national origin, age, disability, and where applicable, sex, marital status, familial status, parental status, religion, sexual orientation, genetic information, political beliefs, reprisal, or because all or a part of an individual's income is derived from any public assistance program. (Not all prohibited bases apply to all programs.) Persons with disabilities who require alternative means for communication of program information (Braille, large print, audiotape, etc.) should contact USDA's TARGET Center at (202) 720-2600 (voice and TDD). To file a complaint of discrimination write to USDA, Director, Office of Civil Rights, 1400 Independence Avenue, S.W., Washington, D.C. 20250-9410 or call (800) 795-3272 (voice) or (202) 720-6382 (TDD). USDA is an equal opportunity provider and employer.



United States  
Department of  
Agriculture



Forest Service  
Pacific Southwest Region  
Plumas National Forest  
[www.fs.fed.us/r5/plumas](http://www.fs.fed.us/r5/plumas)

Feather River Ranger District  
875 Mitchell Ave., Oroville, Ca. 95965  
Phone: (530) 534-6500  
Revised 06/15/06