

## CHAPTER 4

# WATERSHED MANAGEMENT AREAS

---

## USE OF WATERSHED MANAGEMENT AREAS AND HYDROLOGIC UNITS

Watershed Management Areas (WSMAs) identify areas delineated by boundaries of hydrologic units. Management direction for these areas is identified in the Forest Plan through Forestwide direction in Chapters 2 and 3, unless otherwise noted in the individual Watershed Management Areas. These areas are being identified for several reasons:

1. Provide a sense of place for forest users and Forest Service employees
2. Provide an analysis area common to the Forest Service and cooperating agencies for present and future analysis of watershed conditions
3. Provide a management unit which “nests” within a hierarchical system that can be used at various spatial scales

The Watershed Management Areas coincide with hydrologic units as defined and delineated by the U.S. Geologic Survey (USGS). The National Forest System lands of the Chattahoochee-Oconee occur within 6 of the 14 major river basins of Georgia. Collectively these 6 basins drain 31,159 square miles or 52 percent of the state’s land area. Watersheds are the natural hydrologic boundaries for surface-water runoff. Since they are definable features on the landscape, they are broadly used as spatial boundaries for investigations of surface-water resources (Maxwell, et. al., 1995). Watersheds throughout the United States have been defined by the USGS and are used by the U.S. Water Resources Council and other agencies for comprehensive planning and investigations. Larger watersheds contain smaller watersheds nested within the larger area. Smaller watersheds can, in turn, be subdivided into progressively smaller areas. Normally 5 to 15 smaller watersheds are nested into a larger watershed. USGS maintains a standardized system of boundaries of watersheds throughout the United States. This system, using maps, names and codes, is currently in use by multiple agencies to organize and catalog hydrologic data and related resource information for hydrologic units at specific scales or sizes. A hydrologic unit code (HUC), consisting of two digits for each level in the hierarchical unit system, is used to identify any hydrologic area of interest (USGS, 1987).

The hydrologic units used as watershed management areas for the Forest Land Management Plan are identified as “fifth-level”, because of the 10-digit identifying code provided for each HUC. This code identifies the HUC as part of a larger watershed area in the United States. The watersheds of the Chattahoochee-Oconee flow within two large water regions that identify the outlet of the basins. Watersheds flowing north from the Forest are in the Tennessee Region, named for the Tennessee River basin. Watersheds

USE OF  
WATERSHED  
MANAGEMENT  
AREAS AND  
HYDROLOGIC  
UNITS

DESIRED  
CONDITIONS  
FOR WATER  
QUALITY AND  
SOIL  
PRODUCTIVITY

flowing south, west or east are in the South Atlantic-Gulf Region, so named for the major basins flowing to the Atlantic Ocean or the Gulf of Mexico.

The Watershed Management Areas have been used as analysis units throughout the development of the Forest Plan. Initially the watersheds provided a “sense of place” that aided in identifying issues, need for change and allocation of management prescriptions. The East-wide Watershed Assessment Protocol (EWAP) was developed jointly by Forest Service Regions Eight and Nine to characterize landscape information for use in Forest Plan revisions. The overall objective of this watershed analysis is to provide an assessment of overall watershed health. The watersheds contain both public and private lands.

## DESIRED CONDITIONS FOR WATER QUALITY AND SOIL PRODUCTIVITY

Water quality meets or exceeds state standards, and beneficial downstream uses are protected or enhanced. The width and depths of streams are in dynamic equilibrium with stream discharge, sediment load, and bank material. Most streams do not display signs of accelerated down cutting, lateral cutting or aggrading. Where the channel shape has been modified (i.e.: road crossing), the modification preserves the channel stability and function. Downstream beneficial uses are not adversely affected by the modification. The sediment transport capacity exhibits a stable channel balance and does not show signs of excessive deposition or scour. The channel pattern and longitudinal profile have not been adjusted by sediment from the natural state.

Long-term soil productivity is apparent. Nutrient levels and nutrient cycling processes continue to function unimpaired. Woody debris, leaf litter, and other organic matter are detained on many areas to provide soil organic matter, plant nutrients, and energy for soil microorganisms. The soil retains a fragile status. Exposed mineral soil is in a dispersed nature. Some scattered areas, such as roads and some log landing areas, may have low soil productivity and experienced soil loss, or change in soil structure. Human activity is managed so that compaction does not impair productivity or fertility of the soil. The filtering capacity and structure of the soil are not impaired by ground disturbing activities. The imprint of fire lines and old woods roads do not compromise the integrity of the soil.

Detailed analysis of watershed condition can be found in *A Watershed Analysis for the Chattahoochee-Oconee National Forests, 2000* (filed in Supervisors Office). Watersheds with high percentages of private land ownership have major influences downstream and off public lands that impact overall watershed health. Watersheds with high percentages of public land ownership are those where land management can have an effect on improving watershed conditions.

Desired conditions are described in detail for each management prescription allocated in the Watershed Management Areas. Consult Chapter 3 of the Forest Land and Resource Management Plan for these desired condition descriptions. Objectives specific to each Watershed Management Areas have not been identified; see Forestwide Goals and Objectives in chapter 2 of the Forest Plan for this direction.

## CHATTAHOOCHEE NATIONAL FOREST WATERSHED MANAGEMENT AREAS

### CHATTAHOOCHEE NF WATERSHED MANAGEMENT AREAS

Figures 4-1, 4-2, and 4-3 at the end of the Chattahoochee WSMA descriptions, show the location of each hydrologic unit. The description and numbering sequence of the Watershed Management Areas (WSMAs) begin on the western extent of the Chattahoochee National Forest near the Alabama state line with WSMA # 1, Chattooga River - Lower and continue eastward ending with WSMA # 32, Broad River, North and Middle Forks. Each Watershed Management Area identifies the name of the watershed, the ten (10) digit hydrologic unit code identified from the U.S. Geologic Survey system, a general description of the physical locations and existing characteristics, a partial listing of major, named perennial streams found on National Forest lands in the watershed, a GIS estimate of miles of perennial streams on National Forest lands, a listing of public water supply withdrawals within the watershed, a short list of landscape features, total watershed area and percentage of current National Forest lands, and the current list of management prescription allocations for the WSMA. A total of thirty-two (32) WSMAs are currently delineated on the Chattahoochee.

Table 4- 1 shows a summary of the fifth level watersheds in Georgia with total acres, National Forest acres, and the percentage of the watershed in National Forest acreage in Georgia.

**Table 4- 1. Summary of Chattahoochee-Oconee NF Watershed Management Areas (Georgia Acreage and Percentages Only)**

Name	5 <sup>th</sup> Level HUC No.	Watershed Acres in GA	GA NF Acres	% NF in GA
<b>Chattahoochee National Forest</b>				
Chattooga River-North, East, and West Forks	0306010201	105,600	76,901.3	73
Tallulah River	0306010207	113,920	65,895	58
Tugaloo River-Panther Creek	0306010206	55,040	21,109.8	38
Broad River-North and Middle Forks	0306010401	195,200	23,582.1	12
Chattahoochee River-Chickamauga Creek	0313000101	99,200	39,905.1	40
Soque River	0313000102	101,760	17,523.4	17
Chestatee River-Dicks Creek	0313000105	86,400	27,942	32
Chestatee River-Yahoola Creek	0313000106	62,720	12,116.6	19
Conasauga River-Upper	0315010101	72,320	48,095	67
Conasauga River-Middle	0315010102	91,520	17,912.6	20
Coahulla Creek	0315010103	78,080	1,894.9	2
Holly Creek	0315010104	74,240	19,892.7	27
Conasauga River-Lower	0315010105	69,120	5,173.7	7
Cartecay River	0315010201	86,400	15,020.5	17
Elijay River	0315010202	59,520	13,107.4	22
Mountaintown Creek	0315010203	46,720	13,557.5	29
Coosawattee River-Carters Lake	0315010204	46,080	1,138	2
Oostanaula River-Upper	0315010301	74,880	8,137.5	11
Johns Creek	0315010303	28,160	10,744.6	38
Little Armuchee Creek	0315010304	51,840	8,016.9	15
Armuchee Creek	0315010305	91,520	22,130	24
Etowah River-Upper	0315010401	113,920	26,820.3	24
Amicalola Creek	0315010402	62,720	4,380.2	7
Chattooga River-Upper	0315010504	113,919	1673.1	1
Chattooga River-Lower	0315010505	74,239	2269.5	3
Little Tennessee River	0601020201	30,720	11,094	36
Little Chickamauga Creek-East Chickamauga Creek	0602000109	104,960	4,152.2	4
Hiawassee River-Chatuge Lake	0602000201	85,120	47,843.4	56
Brasstown Creek	0602000204	32,640	10,503.7	32
Nottely River-Nottely Lake	0602000208	136,960	48,988.7	36
Toccoa River-Upper	0602000301	148,479	101,774.9	69
Toccoa River-Middle	0602000302	123,520	19,757.1	16
<b>Oconee National Forest</b>				
Oconee River-Big Creek	0307010106	98,560	5,009.2	5
Oconee River-Greenbriar Creek	0307010107	100,480	20,783.8	21
Appalachee River-Lower	0307010109	113,920	4,844	4
Richland Creek	0307010111	101,760	449.5	<1
Oconee River-Sugar Creek	0307010110	107,520	8.3	<0.01
Little River-Upper	0307010114	139,519	1,029.1	1
Little River-Lower	0307010115	50,560	14,163.2	28
Murder Creek	0307010116	132,480	14,746.3	11
Big Cedar Creek	0307010117	138,879	21,924.1	16
Ocmulgee River-Big Sandy Creek	0307010310	124,160	14,618.3	12
Ocmulgee River-Rum Creek	0307010313	137,600	17,637	13

**1. Chattooga River – Lower (HUC# 0315010505)**

Description/Existing Conditions: located along the steep, west-facing slopes of the prominent Taylor Ridge from Hammond Gap south to its termination near High Point. Tributary to the Coosa River at Weiss Lake in Alabama

Major Streams on NF: tributary streams to Chattooga River, 3.6 miles of perennial stream

Public Water Supply: City of Summerville withdrawal on Raccoon Creek – west of city limits

Landscape Features: Taylor Ridge (eastern boundary), Pinhoti Trail, The Narrows, Chattooga River flows through City of Summerville, James H. “Sloppy” Floyd State Park, High Point lookout, bisected by U.S. Highway 27

Watershed Area: 116 square miles (74,239 ac); National Forest lands – 3%

**Table 4- 2. Watershed Management Area – Chattooga River, Lower**

HUC # 0315010505	Rx Number	Acres
Areas Managed to Restore/Maintain Old Growth	6.B	1,989
Scenic Corridors & Sensitive Viewsheds	7.B	130
Management, Maintenance & Restoration of Plant Associations	9.H	150
Administrative Sites	5.A	0.5
<b>TOTAL NATIONAL FOREST ACRES</b>		<b>2269.5</b>

**2. Chattooga River – Upper (HUC # 0315010504)**

General Description: located along the steep, west-facing slopes of the prominent Taylor Ridge from Hammond Gap north to Maddox Gap

Major Streams on NF: tributary streams to Cane Creek, 1.5 miles of perennial stream

Public Water Supply: City of Lafayette withdrawal on Dry Creek – west of city

Landscape Features: Taylor Ridge (eastern boundary), Maddox Gap, headwaters of river in City of Lafayette

Watershed Area: 178 square miles (113,919 ac); National Forest lands – 1%

**Table 4- 3. Watershed Management Area – Chattooga River, Upper**

HUC # 0315010504	Rx Number	Acres
Areas Managed to Restore/Maintain Old Growth	6.B	1,384.6
Old Growth Core Areas	6.D	9
Scenic Corridors & Scenic Viewsheds	7.B	129.9
Management, Maintenance & Restoration of Plant Associations	9.H	149.6
<b>TOTAL NATIONAL FOREST ACRES</b>		<b>1673.1</b>

### 3. Little Chickamauga Creek – East Chickamauga Creek (HUC # 0602000109)

General Description: Located on the north end of the Armuchee, flows South Chickamauga Creek near Ringgold, GA, Interstate Highway 75 bisects HUC

Major Streams on NF: Dry Creek, Gordon Spring Creek, East Chickamauga Creek, Cove Creek, Hurricane Creek, 28.5 miles of perennial stream

Public Water Supply: City of Ringgold withdrawal on South Chickamauga Creek

Landscape Features: Houston Valley, Nickajack Gap, Taylor Ridge, Tunnel Hill, and Ringgold

Watershed Area: – 164 square miles (104,960 ac); National Forest lands – 4%

**Table 4- 4. Watershed Management Area – Little Chickamauga Creek/  
East Chickamauga Creek**

HUC # 0602000109	Rx Number	Acres
Botanical – Zoological Areas	4.D	18.7
Areas Managed to Restore/Maintain Old Growth	6.B	519.7
Dispersed Recreation Areas	7.E.1	2,537.8
Management, Maintenance & Restoration of Plant Associations	9.H	1,076
<b>TOTAL NATIONAL FOREST ACRES</b>		<b>4,152.2</b>

### 4. Little Armuchee Creek (HUC # 0315010304)

General Description: located on the south end of the Armuchee, drains the east facing slopes of Taylor Ridge from High Point north to Hammond Gap.

Major Streams on NF: Little Armuchee Creek, Moss Creek, Mill Creek, Storey Mill Creek, Selman Creek, 15.4 miles of perennial stream

Public Water Supply: none

Landscape Features: Taylor Ridge (east slopes), Pinhoti Trail, High Point, Gore, Crystal Springs, Subligna, The Narrows

Watershed Area: 81 square miles (51,840 ac); National Forest lands – 15%

**Table 4- 5. Watershed Management Area – Little Armuchee Creek**

HUC # 0315010304	Rx Number	Acres
Areas Managed to Restore/Maintain Old Growth	6.B	378.5
Core Areas of Old Growth w/Extended Rotations	6.D	589
Scenic Corridors and Sensitive Viewsheds	7.B	135.3
Management, Maintenance & Restoration of Plant Associations	9.H	6,914.1
<b>TOTAL NATIONAL FOREST ACRES</b>		<b>8,016.9</b>

**5. Armuchee Creek (HUC # 0315010305)**

General Description: located in the central Armuchee, drains the east facing slopes of Taylor Ridge from Hammond Gap to Maddox Gap, and the west facing slopes of Johns Mountain.

Major Streams on NF: East Armuchee Creek, West Armuchee Creek, Ruff Creek, Ponder Branch, Concord Creek, Baker Creek, 24 miles of perennial streams

Public Water Supply: none

Landscape Features: Taylor Ridge (east slopes), Strawberry Mountain, Johns Mountain (west slopes), Villanow, Ridge & Valley Scenic Byway

Watershed Area: 143 square miles (91,520 ac); National Forest lands – 24%

**Table 4- 6. Watershed Management Area – Armuchee Creek**

HUC # 0315010305	Rx Number	Acres
Botanical and Zoological Areas	4.D	119.8
Regional Forester Scenic Areas	4.F.2	49.7
Natural Areas – Few Open Roads	4.I	511.7
Administrative Areas	5.A	2.4
Areas Managed to Restore/Maintain Old Growth Characteristics	6.B	4,237.8
Ridge & Valley Scenic Byway	7.A	1,323.0
Scenic Corridors & Sensitive Viewsheds	7.B	208
Dispersed Recreation Areas	7.E.1	613.5
Dispersed Recreation with Vegetation Management	7.E.2	406
Management, Maintenance & Restoration of Plant Associations	9.H	14,658.1
<b>TOTAL NATIONAL FOREST ACRES</b>		<b>22,130</b>

**6. Coahulla Creek (HUC # 0315010103)**

General Description: located in the extreme northeast quadrant of the Armuchee, western portion of City of Dalton, 8% of area in urban use, 18% agricultural, majority of HUC located in valley east of NF, drains north into Tennessee

Major Streams on NF: Hurricane Creek, 0.4 miles of perennial streams

Public Water Supply: City of Dalton withdrawal on Coahulla Creek and on Mill Creek above city

Landscape Features: Hurricane Mountain, Rocky Face Mountain, Dug Gap, Interstate 75 corridor, City of Dalton

Watershed Area: 122 square miles (78,080 ac); National Forest lands – 2%

CHATTAHOOCHEE  
NF WATERSHED  
MANAGEMENT  
AREAS

**Table 4- 7. Watershed Management Area – Coahulla Creek**

HUC # 0315010103	Rx Number	Acres
Natural Areas – Few Open Roads	4.I	1,295
Communication Sites	5.B	24
Areas Managed to Restore/Maintain Old Growth	6.B	255.6
Management, Maintenance & Restoration of Plant Associations	9.H	320.3
<b>TOTAL NATIONAL FOREST ACRES</b>		<b>1,894.9</b>

**7. Johns Creek (HUC # 0315010303)**

General Description: central portion of Armuchee from The Pocket south to Everett Springs, Johns Creek is a primary tributary to Oostanaula River

Major Streams on NF: Johns Creek, Blue Springs Branch, Pocket Creek, Dry Creek, Furnace Creek, 42.5 miles of perennial streams

Public Water Supply: none

Landscape Features: Johns Mountain, The Pocket Recreation Area, Lake Marvin, Calbeck Mountain, Keown Falls, Hidden Creek, Johns Mountain WMA

Watershed Area: – 44 square miles (28,160 ac); National Forest lands – 38%

**Table 4- 8. Watershed Management Area - Johns Creek**

HUC # 0315010303	Rx Number	Acres
Regional Forester Designated Scenic Areas	4.F.2	185.9
Areas Managed to Restore/Maintain Old Growth Characteristics	6.B	3,861.0
Ridge & Valley Scenic Byway Corridor	7.A	1,274.8
Dispersed Recreation Areas	7.E.1	349
Dispersed Recreation Areas with Vegetation Management	7.E.2	446
Rare Communities	9.F	662.6
Management, Maintenance & Restoration of Plant Associations	9.H	4,388.0
<b>TOTAL NATIONAL FOREST ACRES</b>		<b>10,744.6</b>



**8. Oostanaula River – Upper (HUC # 0315010301)**

General Description: southeastern portion of Armuchee from Welcome Gap Church south, Oostanaula River joins with Etowah River at Rome, GA to form Coosa River

Major Streams: Rocky Creek, Blue Spring Branch, Bow Creek, Snake Creek, 41 miles of perennial stream on NF

Public Water Supply: City of Rome withdrawal on Oostanaula River

Landscape Features: Horn Mountain, Chestnut Mountain, towns of Sugar Valley and Hill City, GA Highway 136, Hidden Creek Recreation Site, U.S. Highway 27

Watershed Area: 117 square miles (74,880 ac), National Forest – 11%

**Table 4- 9. Watershed Management Area – Oostanaula River, Upper**

HUC # 0315010301	Rx Number	Acres
Natural Areas with Few Open Roads	4.I	137.6
Areas Managed to Restore/Maintain Old Growth Characteristics	6.B	1,741.4
Dispersed Recreation Areas	7.E.1	146
Dispersed Recreation Areas with Vegetation Management	7.E.2	11.7
Management, Maintenance & Restoration of Plant Associations	9.H	6,100.8
<b>TOTAL NATIONAL FOREST ACRES</b>		<b>8,137.5</b>

**9. Conasauga River, Lower (HUC # 0315010105)**

General Description – east central portion of Armuchee, southwest of Dalton

Major Streams on NF: Stover Creek, Swamp Creek, Little Swamp Creek, Dry Creek, 20.5 miles of perennial stream

Public Water Supply: City of Dalton withdrawal on Conasauga River

Landscape Features: Redwine Cove, Hurricane Mountain, Pinhoti Trail, east slopes of Rocky Face Mountain, Barn Mountain

Watershed Area: 108 square miles (69,120 ac), National Forest lands – 7%

**Table 4- 10. Watershed Management Area - Conasauga River, Lower**

HUC # 0315010105	Rx Number	Acres
Natural Areas – Few Open Roads	4.I	4,004.3
Communication Sites	5.B	10.0
Areas Managed to Restore or Maintain Old Growth	6.B	16.4
Management, Maintenance & Restoration of Plant Associations	9.H	1,143
<b>TOTAL NATIONAL FOREST ACRES</b>		<b>5,173.7</b>

CHATTAHOOCHEE  
NF WATERSHED  
MANAGEMENT  
AREAS

## 10. Holly Creek (HUC # 0315010104)

General Description: southwest-central portion of Cohutta; drains Fort Mountain, Tatum Mountain, south facing slopes of Grassy Mountain to Holly Creek Gap on east and north to Potato Patch Mountain

Major Streams on NF: Holly Creek, Rock Creek, Chicken Creek, Falls Branch, Baker Creek, Mill Creek, Bear Branch, Emery Creek, Dill Creek, Shanty Creek, Muskrat Creek, Milma Creek, 81.5 miles of perennial streams

Public Water Supply: City of Chatsworth on Holly Creek near city limits

Landscape Features: Fort Mountain, Cold Springs Mountain, Tatum Mountain, southwest slopes of Grassy Mountain, Rocky Face, Holly Creek Work Center

Watershed Area: 116 square miles (74,240 ac), National Forest lands – 27%

**Table 4- 11. Watershed Management Area - Holly Creek**

HUC # 0315010104	Rx Number	Acres
Botanical and Zoological Areas	4.D	277.8
Administrative Sites	5.A	13.7
Areas Managed to Restore/Maintain Old Growth Characteristics	6.B	1,050.5
Scenic Corridors & Sensitive Viewsheds	7.B	3,679.7
Dispersed Recreation Areas	7.E.1	1,240.7
High Elevation Early Successional Habitat	8.E.3	23.3
Management, Maintenance & Restoration of Plant Associations	9.H	13,607
<b>TOTAL NATIONAL FOREST ACRES</b>		<b>19,892.7</b>

## 11. Conasauga River, Middle (HUC# 0315010102)

General Description: west central portion of Cohutta, from Lake Conasauga north to Chicken Coop Gap west into valley, 2/3 of area in valley west of NF lands

Major Streams on NF: Cohorn Branch, Mill Creek, Rocky Flats Branch, Muddy Branch, Sumac Creek, 74.8 miles of perennial streams

Public Water Supply: City of Dalton on Conasauga River in valley

Landscape Features: Grassy Mountain, Hickey Gap, US Highway 411

Watershed Area: 143 square miles (91,520 ac), National Forest lands – 20%

**Table 4- 12. Watershed Management Area - Conasauga River, Middle**

HUC # 0315010102	Rx Number	Acres
Cohutta Wilderness Area	1.A	54.9
Recommended Wild & Scenic Rivers – Scenic Segments	2.B.2	0.1
Administrative Sites	5.A	3.3
Areas Managed to Restore/Maintain Old Growth Characteristics	6.B	1,227.5
Scenic Corridors & Sensitive Viewsheds	7.B	3,858
Dispersed Recreation Areas with Vegetation Management	7.E.2	1.6
High Elevation Early Successional Habitat	8.E.3	590.5
Rare Communities	9.F	28.4
Management, Maintenance & Restoration of Plant Associations	9.H	12,259.1
<b>TOTAL NATIONAL FOREST ACRES</b>		<b>17,912.6</b>

**12. Conasauga River, Upper (HUC # 0315010101)**

General Description: northwestern portion of Cohutta, flows north into Cherokee National Forest in Tennessee. Drains Cohutta Wilderness Area (67% of NF land in GA in HUC) in Georgia, flows north into Tennessee. Western half of HUC is in Ridge & Valley.

Major Streams on Chattahoochee NF: outside Wilderness Area - Bogden Creek, Gizzard Branch, Mooneyham Branch, Jigger Creek, East Cowpen Creek, Conasauga River; South Fork and West Fork of Jacks River, inside Wilderness Area – Conasauga River, Popular Camp Creek, Panther Creek, Thomas Creek, Hickory Creek, Rough Creek, Rice Camp Branch, Jacks River, Beech Creek, Murray Creek, Lost Branch, Penitentiary Branch, Bear Branch, Hurricane Branch, Conasauga Creek, Sugar Cove Branch, 198 miles of perennial stream

Public Water Supply: none

Landscape Features: Doogan Mountain, Iron Mountain, Alaculsy Valley, Murrays Lake, Cohutta Wilderness, Cottonwood Patch, Three Forks Mountain, Betty Gap, Potato Patch, Ken Mountain, Jones Settlement, Dyer Mountain, Crenshaw Gap, Flat Top Mountain, FS Road 64 on drainage divide

Watershed Area: 113 square miles in GA (72,320 acres in GA), National Forest lands in GA – 67% of GA portion of Watershed (Joins Management Area 1 of Cherokee National Forest in Tennessee.)

**Table 4- 13. Watershed Management Area - Conasauga River, Upper**

HUC # 0315010101	Rx Number	Acres
Cohutta Wilderness Area	1.A	32,296.5
Recommended Wilderness Study Areas	1.B	693.3
Recommended Wild & Scenic Rivers – Wild Segments	2.B.1	753.1
Recommended Wild & Scenic Rivers – Scenic Segments	2.B.2	343.1
Recommended Wild & Scenic Rivers - Recreational Segments	2.B.3	79.6
Administrative Sites	5.A	6.2
Areas Managed to Restore/Maintain Old Growth Characteristics	6.B	58
Scenic Corridors and Sensitive Viewsheds	7.B	2,106.6
Dispersed Recreation Areas	7.E.1	33.6
Dispersed Recreation Areas with Vegetation Management	7.E.2	6,753
High Elevation Early Successional Habitat	8.E.3	241.6
Management, Maintenance & Restoration of Plan Associations	9.H	3,838.1
<b>TOTAL NATIONAL FOREST ACRES</b>		<b>48,095</b>

### 13. Mountaintown Creek (HUC # 0315010203)

General Description: southeastern portion of Cohutta from Three Forks Mountain south to Indian Grave Knob, Wolfpen Gap and east to Flat Top Mountain, primary tributary to Coosawattee River downstream of Ellijay

Major Streams on NF: Mountaintown Creek, Bear Creek, Barnes Creek, Crenshaw Branch, Betty Creek, Harper Creek, Youther Creek, 52.2 miles of perennial stream

Public Water Supply: none

Landscape Features: Barnes Creek Recreation Area, Mountaintown Creek, Pink Knob, Flat Top Mountain, Hill's Lake, FS Road 64 on drainage divide

Watershed Area: 73 square miles (46,720 ac), National Forest lands – 29%

**Table 4- 14. Watershed Management Area - Mountaintown Creek**

HUC # 315010203	Rx Number	Acres
Custodial Management	0	62.9
Scenic Corridors and Sensitive Viewsheds	7.B	935
Dispersed Recreation Areas	7.E.1	2,719.6
Dispersed Recreation Areas with Vegetation Mgmt	7.E.2	1,722.0
High Elevation Early Successional Habitat	8.E.3	3.8
Management, Maintenance & Restoration of Plant Associations	9.H	2,350.3
Remote Backcountry Recreation – Few Open Roads	12.A	5,764.2
<b>TOTAL NATIONAL FOREST ACRES</b>		<b>13,557.5</b>

**14. Coosawattee River/Carters Lake (HUC # 0315010204)**

General Description: contains Carters Lake managed by Corps of Engineers - power generation - located southwest of Ellijay, small acreage of National Forest ownership in northwest corner on Cohutta near High Top

Major Streams on NF: tributaries to Tails Creek, Rodgers Creek, and 2.4 miles of perennial streams

Public Water Supply: City of Chatsworth withdrawal from Carters Lake (Wurley Creek), south of Highway 282/76

Landscape Features: High Top Mountain, east slopes of Tatum Mountain

Watershed Area: 72 square miles (46,080 ac), National Forest lands – 2%

**Table 4- 15. Watershed Management Area - Coosawattee River/Carters Lake**

HUC # 0315010204	Rx Number	Acres
Custodial Management	0	481.1
Management, Maintenance & Restoration of Plant Associations	9.H	916.6
<b>TOTAL NATIONAL FOREST ACRES</b>		<b>1,138</b>

**15. Toccoa River, Middle (HUC # 0602000302)**

General Description: drainage begins below Lake Blue Ridge, drains eastern portion of Cohutta including portion of Cohutta Wilderness and northwestern portion of Toccoa, northwest of Blue Ridge. Watershed shared with Cherokee NF in Tennessee; Toccoa River name changes to Ocoee River at Tennessee state line. Outflow controlled by TVA at Lake Blue Ridge dam.

Major Streams on NF: McClure Creek, Buck Creek, Polecat Branch, Devilsden Branch, Postelle Creek, Little Fightingtown Creek, Fightingtown Creek, Watson Creek, Higdon Creek, Patterson Creek, Tumbling Creek, 69 miles of perennial streams

Public Water Supply: City of McCaysville on Toccoa River

Landscape Features: towns of Blue Ridge, Mineral Bluff & McCaysville, Tumbling Lead, Porter Mountain, Collins Mountain, Watson Gap, Turkeypen Ridge, Cashess Valley, Bush Head Gap, Ai. Remnants of land damage caused by copper mining still evident on private lands within HUC, Toccoa Ranger District Work Center & office.

Watershed Area: 193 square miles in GA (123,520 acres in Georgia), National Forest lands in GA – 16% of GA portion of Watershed (Joins Management Area 2 on Cherokee National Forest.)

CHATTAHOOCHEE  
NF WATERSHED  
MANAGEMENT  
AREAS

**Table 4- 16. Watershed Management Area - Toccoa River, Middle**

HUC # 0602000302	Rx Number	Acres
Cohutta Wilderness Area	1.A	3,139.6
Botanical and Zoological Areas	4.D	152.5
Administrative Sites – Toccoa Work Center	5.A	37.5
Scenic Corridors and Sensitive Viewsheds	7.B	840
Dispersed Recreation Areas	7.E.1	597
High-Elevation, Early Successional Habitat	8.E.3	104.6
Management, Maintenance & Restoration of Plant Associations	9.H	12,376.1
Remote Backcountry Recreation – Few Open Roads	12.A	2,343
<b>TOTAL NATIONAL FOREST ACRES</b>		<b>19,757.1</b>

**16. Ellijay River (HUC # 0315010202)**

General Description: west central portion of Toccoa, south of Blue Ridge south to Ellijay, northern portion of Rich Mountain Wilderness

Major Streams on NF: Turniptown Creek, Little Rock Creek, Rock Creek, Laurel Creek, Frady Creek, Allen Branch, 36 miles of perennial stream on NF

Public Water Supply: City of Ellijay withdrawal on Ellijay River north of city limits

Landscape Features: northern half of Rich Mountain Wilderness, Rich Mountain WMA, Stover Mountain, Turniptown Mountain, cold Mountain, Deadline Ridge, Rocky Mountain, Chestnut Mountain, GA Highway 515/US 76 (four lane highway) bisects watershed south to north, Cherrylog, Whitepath

Watershed Area: 93 square miles (59,520 ac), National Forest lands – 22%

**Table 4- 17. Watershed Management Area - Ellijay River**

HUC # 0315010202	Rx Number	Acres
Rich Mountain Wilderness Area	1.A	3,938.6
Recommended Wilderness Study Area	1.B	23.4
Natural Areas – Few Open Roads	4.I	3,195.9
Scenic Corridors and Sensitive Viewsheds	7.B	1,115.2
Dispersed Recreation Areas	7.E.1	1,210.0
Management, Maintenance & Restoration of Plant Associations	9.H	401.9
Remote Backcountry – Few Open Roads	12.A	3,222.4
<b>TOTAL NATIONAL FOREST ACRES</b>		<b>13,107.4</b>

**17. Cartecay River (HUC # 0315010201)**

General Description: southern portion of Rich Mountain Wilderness east to Nimblewill Gap and Amicalola Falls State Park

Major Streams on NF: Cartecay River, Anderson Creek, Bucktown Creek, Tickanetley Creek, Weaver Creek, Vandergriff Creek, Holden Creek, Stover Creek, Butler Creek, 39 miles of perennial streams

Public Water Supply: City of Ellijay withdrawal on Cartecay River east of city

Landscape Features: southern half of Rich Mountain Wilderness, Rich Mountain WMA, Ed Jenkins NRA, Anderson Creek ORV Trails, Springer Mountain (AT terminus), and apple orchards in private lands on hill slopes

Watershed Area: 135 square miles (86,400 ac), National Forest lands – 17%

**Table 4- 18. Watershed Management Area - Cartecay River**

HUC # 0315010201	Rx Number	Acres
Custodial Management	0	77.6
Rich Mountain Wilderness Area	1.A	2,981.1
Ed Jenkins National Recreation Area	3.C	2,361.5
Proposed Ed Jenkins NRA Addition	3.D	390.6
Appalachian National Trail Scenic Corridor	4.A	0.1
Scenic Corridors and Sensitive Viewsheds	7.B	1,226.4
Dispersed Recreation Areas	7.E.1	2,026.3
Mix of Successional Forest Habitats	8.A.1	5,956.9
<b>TOTAL NATIONAL FOREST ACRES</b>		<b>15,020.5</b>

**18. Amicalola Creek (HUC # 0315010402)**

General Description: southeastern corner of Toccoa, Amicalola Falls State Park to Nimblewill Gap, majority of HUC is south of NF boundary

Major Streams on NF: Amicalola Creek, Cochran Creek, Nimblewill Creek, Chester Creek, 19 miles of perennial streams

Public Water Supply: none

Landscape Features: Amicalola Falls State Park, Cochran Falls, Frosty Mountain, Springer Mountain, Black Mountain, Ed Jenkins National Recreation Area, Appalachian Trail on crest of watershed, GA Highway 52

Watershed Area: 98 square miles (62,720 ac), National Forest lands – 7%

CHATTAHOOCHEE  
NF WATERSHED  
MANAGEMENT  
AREAS**Table 4- 19. Watershed Management Area - Amicalola Creek**

HUC # 0315010402	Rx Number	Acres
Ed Jenkins National Recreation Area	3.C	3,181.8
Appalachian Trail Corridor	4. A	0.1
Dispersed Recreation Areas	7.E.1	665.3
Mid to Late Successional Forest Emphasis	8.A.1	260.9
Management, Maintenance & Restoration of Plant Associations	9.H	272.1
<b>TOTAL NATIONAL FOREST ACRES</b>		<b>4,380.2</b>

**19. Etowah River, Upper (HUC # 0315101401)**

General Description: upper headwaters of Etowah River from Black Mountain Gap to Fryingpan Gap to Hawk Mountain, south to Forest proclamation boundary

Major Streams on NF: Montgomery Creek, Lance Creek, Jones Creek, Etowah River, Ward Creek, Black Branch, Dunn Branch, Bull Creek, Cane Creek, Two Run Creek, 104 miles of perennial streams

Public Water Supply: Camp Merrill on Etowah River, upstream of military facilities

Landscape Features: Ed Jenkins National Recreation Area (20% of NF land area), Blue Ridge Wildlife Management Area, Camp Frank Merrill (US Army), Camp Wahsega (UGA-4H), Appalachian Trail on crest of watershed, Whissenhunt Recreation Area, Jake Mountain Recreation Area, FS Road 42 on drainage divide

Watershed Area: 178 square miles (113,920 ac), National Forest lands – 24%

**Table 4- 20. Watershed Management Area - Etowah River, Upper**

HUC # 0315101401	Rx Number	Acres
Ed Jenkins National Recreation Area	3.C	5,507.4
Proposed National Recreation Area (addition)	3.D	1,638.7
Appalachian National Scenic Trail Corridor	4.A	1,350.5
Scenic & Wildlife Management Areas	4.F.1	1,427.0
Administrative Sites	5.A	8.9
Camp Frank Merrill Military Use Area	5.D	143.8
Source Water Protection Watershed (Camp Merrill)	9.A.1	1,349.2
Management, Maintenance & Restoration of Plant Associations	9.H	15,254
<b>TOTAL NATIONAL FOREST ACRES</b>		<b>26,820.3</b>



**20. Toccoa River, Upper (HUC # 0602000301)**

General Description: upper headwaters of Toccoa River from Blue Ridge divide north to dam forming Lake Blue Ridge reservoir

Major Streams on NF: Cooper Creek, Knight Creek, Sea Creek, Jones Creek, Long Cove Branch, Tom Jones Branch, Presley Branch, Mulky Creek, Millshoat Creek, Bryant Creek, Garrett Creek, Flat Creek, Board Camp Creek, Jarrard Creek, West Seabolt Creek, Slaughter Creek, Mauldin Creek, Gooch Creek, Williams Creek, Pink Davis Creek, Toccoa River, Davis Creek, Grizzle Creek, Suches Creek, Baker Branch, Canada Creek, Sally Spillers Branch, Mt Airy Creek, Blackwell Creek, Justus Creek, Big Creek, Kennedy Creek, 276 miles of perennial streams

Public Water Supply: City of Blue Ridge withdrawal is just below dam forming Lake Blue Ridge

Landscape Features: Ed Jenkins National Recreation Area, Rich Mountain Wilderness Area, Cooper Creek WMA, town of Suches, Lake Winfield Scott Recreation Area, Deep Hole Recreation Area, Swinging Bridge, Dial, Benton MacKaye Trail, Appalachian Trail on watershed crest, Mulky Campground, Frank Gross Campground, Chattahoochee National Fish Hatchery (Rock Creek), Cooper Creek Scenic Area, GA Hi-way 60, Lake Blue Ridge Reservoir (Tennessee Valley Authority), FS Road 42 on drainage divide

Watershed Area: 232 square miles (148,479 ac), National Forest lands – 69%

**Table 4- 21. Watershed Management Area - Toccoa River, Upper**

HUC # 0602000301	Rx Number	Acres
Custodial Management	0	153.7
Rich Mountain Wilderness Area	1.A	4,343.7
Recommended Wild & Scenic Rivers – Scenic Segments	2.B.2	0.2
Coosa Bald National Scenic Area	3.A	3,463.0
Ed Jenkins National Recreation Area	3.C	12,609.2
Appalachian National Scenic Trail Corridor	4.A	5,735.6
Scenic Areas	4.F	2,628
Scenic and Wildlife Management Areas	4.F.1	2,059.1
Regional Forester Scenic Areas	4.F.2	1,212
Outstandingly Remarkable Streams	4.H	5,465.5
Natural Areas with Few Open Roads	4.I	1,211.7
Administrative Sites	5.A	12.9
Scenic Corridors and Sensitive Viewsheds	7.B	1,349.5
Dispersed Recreation Areas	7.E.1	27,121.7
Dispersed Recreation Areas with Vegetation Management	7.E.2	6,049.5
Mid to Late Successional Forest Emphasis Management, Maintenance & Restoration of Plant Associations	8.A.1	18,689.9
Remote Backcountry Recreation – Few Open Roads	9.H	7,830
	12.A	1,882.3
<b>TOTAL NATIONAL FOREST ACRES</b>		<b>101,774.9</b>

**21. Chestatee River/Yahoola Creek (HUC # 0313000106)**

General Description: along Blue Ridge Divide at Gooch Gap to Woody Gap south to Dahlonega

Major Streams on NF: West Cane Creek, Cane Creek, Bryant Creek, Yahoola Creek, Walnut Cove, Poplar Branch, Woody Creek, Walker Creek, Pruitt Creek, Ward Creek, 35 miles of perennial streams

Public Water Supply: City of Dahlonega & Lumpkin County – on Yahoola Creek east of city near GA Highway 52 and US 19 bypass

Landscape Features: Appalachian Trail along crest of watershed, Gooch Gap, Woody Gap, Glass Mine Mountain, Horseshoe Ridge, Dockery Gap, Porter Springs, Fort Smith, R Ranch Recreation Site (private), Camp Glisson (private), City of Dahlonega, Crown Mountain, GA Highway 52, US Highway 19, GA Highway 60

Watershed Area: 98 square miles (62,720 ac), National Forest lands – 19%

**Table 4- 22. Watershed Management Area - Chestatee River/Yahoola Creek**

HUC # 0313000106	Rx Number	Acres
Blood Mountain Wilderness Area	1.A	1.1
Administrative Sites	5.A	47
Appalachian National Scenic Trail Corridor	4.A	1,244.9
Scenic and Wildlife Management Areas	4.F.1	98.2
Administrative Sites	5.A	56.3
Areas Managed to Restore or Maintain Old Growth	6.B	584.2
Dispersed Recreation Areas	7.E.1	1,205.4
Dispersed Recreation Areas with Vegetation Management	7.E.2	88.6
Source Water Protection Watershed (Yahoola Creek Reservoir)	9.A.1	4,684.8
Management, Maintenance & Restoration of Plant Associations	9.H	4,153.1
<b>TOTAL NATIONAL FOREST ACRES</b>		<b>12,116.6</b>

**22. Chestatee River/Dicks Creek (HUC # 0313000105)**

General Description: along Blue Ridge Divide from Woody Gap to Neels Gap to Cowrock Mountain south

Major Streams on NF: Columbia Creek, Waters Creek, Dicks Creek, Mille Creek, Pruitt Creek, Blood Mountain Creek, Frogtown Creek, Boggs Creek, Town Creek, Turner Creek, Tesnatee Creek, Cavenders Creek, 60 miles of perennial streams

Public Water Supply: none

Landscape Features: Appalachian Trail along drainage divide, Woody Gap, Dockery Lake Recreation Site, Waters Creek Trophy Trout Stream, Chestatee WMA, Waters Creek Recreation Site, Turners Corner, Desoto Falls, Blood Mountain Wilderness (35% of NF land area), Boggs Creek Recreation Site, western portion of Raven Cliffs Wilderness, GA Highway 60, US 19/129 bisects watershed

Watershed Area: 135 square miles (86,400 ac), National Forest lands – 32%

**Table 4- 23. Watershed Management Area - Chestatee River/Dicks Creek**

HUC # 0313000105	Rx Number	Acres
Blood Mountain Wilderness Area	1.A	9,530.9
Recommended Wilderness Study Areas	1.B	427
Appalachian National Scenic Trail Corridor	4.A	49.9
Botanical and Zoological Areas	4.D	93.6
Scenic Areas	4.F	4,046.3
Regional Forester Scenic and Wildlife Mgmt Area	4.F.1	7,089.8
Regional Forester Scenic Area	4.F.2	698.8
Areas Managed to Maintain or Restore Old Growth	6.B	639.2
Dispersed Recreation Areas	7.E.1	2,486
Dispersed Recreation Areas with Vegetation Mgmt	7.E.2	2,856.4
<b>TOTAL NATIONAL FOREST ACRES</b>		<b>27,942</b>

**23. Nottely River/Nottely Lake (HUC # 0602000208)**

General Description: Blue Ridge Divide at Neels Gap to Hogpen Gap to Jacks Knob north into North Carolina, watershed shared with Nantahala NF in North Carolina, headwaters of Nottely Lake reservoir (Tennessee Valley Authority)

Major Streams on NF: Crumby Creek, Town Creek, Long Branch, Arkaqua Creek, Fain Branch, Indian Camp Creek, Gilliam Branch, Rough Branch, Tom Branch, Townsend Branch, Wolf Creek, Wildcat Branch, Hogpen Branch, Nance Payne Cove, Frogtown Cove, Hatchet Creek, Richland Creek, Nottely River, Laughter Branch, Stink Smell Creek, Rough Creek, Spiva Branch, 150 miles of perennial streams

Public Water Supply: City of Blairsville withdrawal on Nottely River upstream of city near US 129

Landscape Features: Blood Mountain Wilderness, western portion of Raven Cliffs Wilderness, northern portion of Mark Trail Wilderness, western portion of Brasstown Wilderness, (24% of NF land area in wilderness), Beasley Knob Recreation Site, Coosa Bald Scenic Area, Appalachian Trail on watershed divide, Vogel State Park, Georgia Mountain Experiment Station (UGA), city of Blairsville, Lake Nottely (TVA) – 4,181 acres, Davenport Mountain, western portion of GumLog Mountain

Watershed Area: 214 square miles (136,960 ac), National Forest lands – 36%

**Table 4- 24. Watershed Management Area - Nottely River/Nottely Lake**

HUC # 0602000208	Rx Number	Acres
Wilderness Areas (Blood Mtn, Raven Cliffs, Mark Trail)	1.A	11,969.9
Recommended Wilderness Study Areas	1.B	2,652.6
Coosa Bald National Scenic Area	3.A	3,659.0
Appalachian National Scenic Trail Corridor	4.A	94.1
Botanical and Zoological Areas	4.D	230.8
Cultural and Heritage Areas	4.E.1	86.8
Richard Russell Scenic Byway Corridor	7.A	2,899
Scenic Corridors and Sensitive Viewsheds	7.B	902.3
Dispersed Recreation Areas	7.E.1	13,891.0
Dispersed Recreation Areas with Vegetation Management	7.E.2	22.5
Mid to Late Successional Forest Emphasis	8.A.1	4,649.4
Area Sensitive, Mid to Late-Successional Forest Emphasis	8.A.2	5,256.6
High-Elevation, Early Successional Habitats	8.E.3	2,969
Management, Maintenance & Restoration of Plant Associations	9.H	60.3
<b>TOTAL NATIONAL FOREST ACRES</b>		<b>48,988.7</b>

**24. Brasstown Creek (HUC # 0602000204)**

General Description: from Brasstown Bald north into North Carolina, watershed shared with Nantahala NF in North Carolina, town of Young Harris

Major Streams: Gumlog Creek, East Gumlog Creek, Winchester Creek, Caldwell Branch, Bitter Creek, Stevens Branch, Green Branch, Brasstown Creek, Yewell Branch, Corn Creek, 35 miles of perennial streams

Public Water Supply: Young Harris withdraws from ground water sources

Landscape Features: Brasstown Bald – highest elevation in Georgia, Brasstown Wilderness, Gumlog Mountain, town of Young Harris, Plott Cove Research Natural Area (inside Brasstown Wilderness)

Watershed Area: 51 square miles (32,640 ac), National Forest lands – 32%

**Table 4- 25. Watershed Management Area - Brasstown Creek**

HUC # 0602000204	Rx Number	Acres
Custodial Management	0	99
Brasstown Wilderness Area	1.A	3,672.8
Botanical and Zoological Areas	4.D	59.7
Cultural Heritage Areas	4.E.1	99.3
Administrative Sites	5.A	10.9
Richard Russell Scenic Byway Corridor	7.A	51.4
Dispersed Recreation Areas	7.E.1	509
Area Sensitive, Mid to Late-Successional Forest Emphasis	8.A.2	6,028
High Elevation Early Successional Habitat	8.E.3	13.5
<b>TOTAL NATIONAL FOREST ACRES</b>		<b>10,503.7</b>

**25. Hiwassee River/Chatuge Lake (HUC # 0602000201)**

General Description: from Unicoi Gap to Young Lick to Dicks Creek Gap into North Carolina, watershed shared with Nantahala NF in North Carolina, Lake Chatuge reservoir managed by Tennessee Valley Authority

Major Streams on NF: Soapstone Creek, Gurley Branch, Watkins Branch, Dick Branch, Henson Creek, Joe Creek, Flat Branch, Garrett Branch, Dills Branch, Owl Creek, The Gorge, Sparks Branch, Cynth Creek, Fall Branch, Silas Branch, Kendall Branch, Corbin Creek, Hogpen Branch, Mossy Cove Branch, High Shoals Creek, Brier Creek, Noron Branch, Kirby Branch, Hooper Branch, Bearmeat Creek, Bugscuffle Branch, Shake Rag Branch, Sims Branch, 170 miles of perennial streams

Public Water Supply: City of Hiwassee withdrawal on headwaters of Lake Chatuge, east of city near US 76

Landscape Features: High Shoals Falls Recreation Site, Swallows Creek WMA, Indian Grave Gap, northern portion of Tray Mountain Wilderness, western portion of Southern

Nantahala Wilderness (33% of NF lands in wilderness), Bell Mountain, Tray Mountain, Young Lick (three river basins divide), Appalachian Trail on crest of watershed, Lake

CHATTAHOOCHEE  
NF WATERSHED  
MANAGEMENT  
AREAS

Chatuge, city of Hiawassee, GA Highway 17-75 bisects watershed north to south, GA 515-US 76 traverses watershed west to east

Watershed Area: 133 square miles in GA (85,120 acres in GA), National Forest lands in GA – 56% of GA portion of Watershed

**Table 4- 26. Watershed Management Area - Hiwassee River/Chatuge Lake**

HUC # 0602000201	Rx Number	Acres
Southern Nantahala & Tray Mountain Wilderness Areas	1.A	15,726.9
Recommended Wilderness Study Areas	1.B	2,891.9
Scenic Areas	4.F	700
Appalachian National Scenic Trail Corridor	4.A	3,802
Scenic Areas	4.F	90.1
Scenic and Wildlife Management Areas	4.F.1	3,410.4
Regional Forester Scenic Areas	4.F.2	148.4
Outstandingly Remarkable Streams	4.H	2,804.1
Richard Russell Scenic Byway Corridor	7.A	3,618.2
Dispersed Recreation Areas	7.E.1	5,795.8
Mid to Late-Successional Forest Emphasis	8.A.1	3,970.5
Area Sensitive, Mid to Late Forest Emphasis	8.A.2	917.2
Remote Backcountry Recreation – Few Open Roads	12.A	4,544.8
<b>TOTAL NATIONAL FOREST ACRES</b>		<b>47,843.4</b>

## 26. Chattahoochee River/Chickamauga Creek (HUC # 0313000101)

General Description – upper headwaters of Chattahoochee River, Hogpen Gap to Jacks Knob to Unicoi Gap to Young Lick south to proclamation boundary near Helen, GA

Major Streams on NF: Bruner Branch, Double Culvert Branch, Cool Springs Branch, England Camp Branch, Low Gap Creek, Jasus Creek, Chattahoochee River, Naked Mountain Branch, Henson Creek, Wilkes Creek, Indian Camp Creek, Martin Branch, White Branch, Devils Den Branch, Andrews Creek, Turkeypen Branch, Spoilcane Creek, Lost House Branch, Rice Cabin Creek, Smith Creek, York Creek, Dukes Creek, Dover Creek, Chickamauga Creek, McClure Creek, Nester Branch, 115 miles of perennial stream

Public Water Supply: City of Helen withdrawal from Chattahoochee River in city, Unicoi State Park withdrawal from Unicoi Lake (on Smith Creek), Sky Lake development from local lake

Landscape Features: Mark Trail Wilderness, Tray Mountain Wilderness (40% of NF lands in wilderness), Chattahoochee WMA, Unicoi State Park, Anna Ruby Falls, Upper Chattahoochee Recreation Site, Smithgall Woods Conservation Park (GA DNR), Dukes Creek Falls, eastern portion of Raven Cliffs wilderness, White Oak Gap, east slopes of Mount Yonah, city of Helen, headwaters of Chattahoochee River

Watershed Area: 155 square miles (99,200 ac), National Forest lands – 40%

**Table 4- 27. Watershed Management Area - Chattahoochee River/Chickamauga Creek**CHATTAHOOCHEE  
NF WATERSHED  
MANAGEMENT  
AREAS

HUC # 0313000101	Rx Number	Acres
Wilderness Areas - Mark Trail, Raven Cliffs & Tray Mountain	1.A	16,122
Recommended Wild & Scenic Rivers – Wild Segment	2.B.1	1,229.8
Recommended Wild & Scenic Rivers – Recreational Segment	2.B.3	343.2
Appalachian Trail Corridor	4.A	1,230.1
Botanical and Zoological Areas	4.D	91.4
Scenic Areas	4.F	6,325.8
Scenic and Wildlife Management Areas	4.F.1	4,341.7
Regional Forester Scenic Areas	4.F.2	2,187.4
Outstandingly Remarkable Streams	4.H	19
Richard Russell Scenic Byway Corridor	7.A	3,264.1
Dispersed Recreation Areas	7.E.1	688.9
Dispersed Recreation Areas with Vegetation Management	7.E.2	1,147
Management, Maintenance & Restoration of Plant Associations	9.H	2,497.9
<b>TOTAL NATIONAL FOREST ACRES</b>		<b>39,905.1</b>

**27. Tallulah River (HUC # 0306010207)**

General Description: begins in North Carolina in Southern Nantahala Wilderness, flows through National Forest lands through five Georgia Power lakes managed for hydroelectric power, joins Chattooga River downstream from Tallulah Falls at South Carolina state line

Major Streams on NF: Tallulah River, Plum Orchard Creek, Coleman River, Mill Creek, Beech Creek, Charlies Creek, Holden Branch, Persimmon Creek, Timpson Creek, Flat Creek, Falls Branch, Crow Creek, Slick Shoal Creek, 69 miles of perennial stream

Public Water Supply: City of Clayton & Rabun County withdrawal on Lake Rabun near Lakemont

Landscape Features: Southern Nantahala Wilderness in GA and NC, Coleman River Scenic Area, Tate City (private lands), Rabun Beach - Forest Service recreation sites on Lake Rabun. Georgia Power owns Lakes Burton, Seed, Rabun, Tallulah and Tugaloo located on main stem of Tallulah River – cover a river distance of 34 miles and reservoir surface of 4,475 acres (largest is Lake Burton). Reservoirs operated for power generation since early 20<sup>th</sup> century. Shoreline around lakes if primarily owned by Georgia Power and leased for recreation residences. Tallulah Dome geologic feature dominates southern portion of watershed; watershed elevation ranges from 744 feet at Yonah Lake spillway to 5,499 feet at Standing Indian in North Carolina.

Watershed Area: 178 square miles in GA (113,920 acres in GA), National Forest lands – 58% of GA portion of Watershed

CHATTAHOOCHEE  
NF WATERSHED  
MANAGEMENT  
AREAS**Table 4- 28. Watershed Management Area - Tallulah River**

HUC # 0306010207	Rx Number	Acres
Custodial Management	0	77.3
Southern Nantahala Wilderness Area (GA)	1.A	7,688.2
Recommended Wilderness Study Areas	1.B	844
Appalachian National Scenic Trail Corridor	4.A	3,435.9
Botanical and Zoological Areas	4.D	241.1
Regional Forester Scenic Areas	4.F.2	314.9
Forest Designated Outstandingly Remarkable Streams	4.H	4,135
Administrative Sites	5.A	6.6
Communication Sites	5.B	11.6
Areas Managed to Restore or Maintain Old Growth	6.B	3,193.3
Dispersed Recreation Areas	7.E.1	3,923.6
Mid to Late-Successional Forest Emphasis	8.A.1	20,852.0
Area Sensitive, Mid to Late-Successional Forest Emphasis	8.A.2	11,593.5
Watershed Restoration Areas	9.A.3	112
Rare Communities	9.F	53.8
Management, Maintenance & Restoration of Plant Associations	9.H	6,579
Remote Backcountry - Few Open Roads	12.A	2,996.2
<b>TOTAL NATIONAL FOREST ACRES</b>		<b>65,895</b>

**28. Soque River (HUC # 0313000102)**

General Description: primary tributary to Chattahoochee River, headwaters on National Forest in Tray Mountain wilderness

Major Streams on NF: Soque River, Goshen Creek, Goshen Branch, Raper Creek, Chastain Branch, Pigeon Creek, Nester Branch, Shoal Creek, Nerve Branch, 45 miles of perennial streams

Public Water Supply: City of Clarkesville withdrawal on Soque River upstream of City

Landscape Features: eastern slopes of Tray Mountain Wilderness, Yellow Mountain, Oakey Mountain, Moates Knob

Watershed Area: 159 square miles (101,760 ac), National Forest lands - 17%



**Table 4- 29. Watershed Management Area - Soque River**

HUC # 0313000102	Rx Number	Acres
Tray Mountain Wilderness Area	1.A	3,502.4
Scenic Areas	4.F	851.4
Forest Designated Outstandingly Remarkable Streams	4.H	1,031
Communication Sites	5.B	0.5
Areas Managed to Restore/Maintain Old Growth Characteristics	6.B	2,373.5
Dispersed Recreation Areas	7.E.1	6,110.1
Mid to Late Successional Forest Emphasis	8.A.1	14.9
Rare Communities	9.F	7.0
Management, Maintenance & Restoration of Plant Associations	9.H	3,633.1
<b>TOTAL NATIONAL FOREST ACRES</b>		<b>17,523.4</b>

**29. Little Tennessee River (HUC # 0601020201)**

General Description: north-central Rabun County drains north into North Carolina, valleys on private land with towns of Dillard and Mountain City, watershed flows north through valley into North Carolina, shared with Nantahala NF in Macon County, NC

Major Streams on NF: Patterson Creek, Hopper Branch, Keener Creek, Darnell Creek, Thomas Creek, Blacks Creek, Kelly Creek, Betty Creek, 26 miles of perennial streams on NF

Public Water Supply: none, Rabun Apparel industrial withdrawal on Little Tennessee River

Landscape Features: Patterson Gap, cultivation of truck crops is a primary industry on private land in valleys along US 441 between Mountain City and Dillard, Coweeta Hydrologic Lab (FS Research) located in watershed near Otto, NC, Sky Valley residential development on east side of watershed near NC state line

Watershed Area: 48 square miles in GA (30,720 acres in GA), National Forest lands – 36% of GA portion of Watershed

**Table 4- 30. Watershed Management Area - Little Tennessee River**

HUC # 0601020201	Rx Number	Acres
Custodial Management	0	297.3
Southern Nantahala Wilderness Area	1.A	7.9
Natural Areas – Few Open Roads	4.I	1,306.7
Areas Managed to Restore/Maintain Old Growth Characteristics	6.B	1,717
Mid to Late-Successional Forest Emphasis	8.A.1	279.3
High Elevation, Early Successional Habitats	8.E.3	3,005.6
Watershed Restoration Areas	9.A.3	6.1
Remote Backcountry Recreation – Few Open Roads	12.A	4,597.0
<b>TOTAL NATIONAL FOREST ACRES</b>		<b>11,094</b>

### 30. Chattooga River - North, East, and West Forks (HUC # 0306010201)

General Description – Watershed in northeastern corner of Georgia, shared with Nantahala NF in North Carolina and Sumter NF in South Carolina, watershed ranges from high elevation near state lines to Piedmont near confluence with Tallulah River, Chattooga Wild and Scenic River along boundary with South Carolina, highest rainfall in Georgia (excess of 70 inches annually)

Major Streams on NF: Chattooga River, West Fork of Chattooga River, Reed Creek, Nicholson Creek, Bad Creek, Ammons Branch, Pigpen Branch, Camp Branch, Laurel Creek, Sarahs Creek, Billingsley Creek, Holcomb Creek, Addie Branch, Warwoman Creek, Stekoa Creek, Roach Mill Creek, Tuckaluge Creek, Gold Mine Branch, Chechero Creek, She Creek, Cliff Creek, Camp Creek, 255 miles of perennial stream

Public Water Supply: none

Landscape Features: Rabun Bald, Chattooga Wild & Scenic River, Ellicott Rock Wilderness, Warwoman geologic fault zone, City of Clayton, Tiger, Black Rock Mountain State Park, US Highways 441 and 76 bisect watershed, elevation ranges from 900 feet at Tugaloo Lake to 4,800 feet at the watershed divide in North Carolina

Watershed Area: – 165 square miles in GA (105,600 acres in GA), National Forest lands – 73% of GA portion of Watershed. Management within this watershed is coordinated with the Andrew Pickens Ranger District of the Sumter National Forest in South Carolina and the Highlands Ranger District of the Nantahala National Forest in North Carolina. In the Sumter Forest Plan, the corresponding watershed management area is number 2. Goals, objectives, standards and desired conditions for the watershed are a composite of the three Forest Plans and recognize the differing ecological and social differences among the Forests.

**Table 4- 31. Watershed Management Area - Chattooga River - North, East, and West Forks**

HUC # 0306010201	Rx Number	Acres
Custodial Management	0	458.8
Ellicott Rock Wilderness Area	1.A	2,022.9
Recommended Wilderness Study Areas	1.B	562.3
Chattooga W & S River - Wild River Segments	2.A.1	5,997.8
Chattooga W & S River - Scenic River Segments	2.A.2	467.4
Chattooga W & S River - Recreational Segment	2.A.3	1,549.9
Recommended Wild & Scenic Rivers - Wild Segments	2.B.1	136.8
Recommended Wild & Scenic Rivers - Scenic Segments	2.B.2	180.5
Chattooga River - Recreational River Segments	2.A.3	1,551
Natural Areas - Few Open Roads	4.I	6,280.0
Administrative Sites	5.A	3.1
Areas Managed to Restore or Maintain Old Growth	6.B	9.6
Dispersed Recreation Areas with Vegetation Management	7.E.2	2,679.5
Mid to Late-Successional Forest Emphasis	8.A.1	13,610.7
High Elevation Early Successional Habitat	8.E.3	6.5
Watershed Restoration Areas	9.A.3	16,299.5
Rare Communities	9.F	381.4
Management, Maintenance & Restoration of Plant Associations	9.H	24,466.5
Remote Backcountry - Few Open Roads	12.A	1,788.1
<b>TOTAL NATIONAL FOREST ACRES</b>		<b>76,901.3</b>

**31. Tugaloo River/Panther Creek (HUC # 0306010206)**

General Description: located in upper Piedmont, transition to Southern Appalachian Mountains, Tallulah Dome (north boundary) geologic feature dominants landforms, US Highway 441 bisects watershed, City of Toccoa, watershed also in South Carolina

Named Streams on NF: Panther Creek, Davidson Creek, Little Panther Creek, Little Toccoa Creek, Toccoa Creek, Cedar Creek, Charlie Branch, Rothwell Creek, Big Shoal Branch, Horse Creek, 68 miles of perennial streams

Public Water Supply: City of Toccoa secondary storage reservoir located on Davidson Creek

Landscape Features: Tallulah Dome, Panther Creek Recreation Site near US 441, Locust Stake Recreation Site, Yonah Lake, Lake Hartwell reservoir managed by Corps of Engineers, Toccoa Falls (at Toccoa Falls College), Panther Creek Falls

Watershed Area: 86 square miles in GA (55,040 acres in GA), National Forest lands - 38% of GA portion of Watershed

**Table 4- 32. Watershed Management Area - Tugaloo River/Panther Creek**

HUC # 0306010206	Rx Number	Acres
Botanical – Zoological Areas	4.D	1,522.9
Forest-Designated Outstandingly Remarkable Streams	4.H	2,092.7
Areas Managed to Restore/Maintain Old-Growth Characteristics	6.B	1,262.9
Source Water Protection Watersheds (City of Toccoa)	9.A.1	3,282.5
Watershed Restoration Areas	9.A.3	203
Management, Maintenance & Restoration of Plant Associations	9.H	12,745.8
<b>TOTAL NATIONAL FOREST ACRES</b>		<b>21,109.8</b>

### 32. Broad River, North and Middle Forks (HUC # 0306010401)

General Description: Piedmont hills watershed, tributary of the Savannah River, cities of Cornelia and Mt. Airy at headwaters on Brevard Fault-Gainesville Ridges

Major Streams on NE: North Fork-Broad River, Middle Fork-Broad River, Kimbell Creek, Nancytown Creek, Big Leatherwood Creek, 114 miles of perennial streams

Public Water Supply: Cities of Cornelia, Baldwin, Mt. Airy and Demorest withdraw from Hazel Creek watershed on west side of Gainesville Ridge

Landscape Features: Lake Russell WMA, Lake Russell-Nancytown Recreation Sites, Curahee Mountain, Chenocetah Mountain, GA Highway 365/US Highway 441 on north and west boundaries of watershed, Gainesville Ridges landform feature along GA 365, town of Baldwin, Cornelia, Mt. Airy

Watershed Area: 305 square miles (195,200 ac), National Forest lands – 12%

**Table 4- 33. Watershed Management Area - Broad River, North and Middle Forks**

HUC # 0306010401	Rx Number	Acres
Botanical and Zoological Areas	4.D	554.6
Cultural/Heritage Areas	4.E.1	4.5
Scenic Areas	4.F	4,187.1
Outstandingly Remarkable Streams	4.H	2,259.5
Communication Sites	5.B	2.1
Watershed Restoration Areas	9.A.3	1,232.6
Rare Communities	9.F	11.1
Management, Maintenance & Restoration of Plant Associations	9.H	15,330.6
<b>TOTAL NATIONAL FOREST ACRES FOR MGMT AREA</b>		<b>23,582.1</b>

## National Forest Lands on Chattahoochee NF Assigned Outside Watershed Management Areas

CHATTAHOOCHEE  
NF WATERSHED  
MANAGEMENT  
AREAS

Two small areas of National Forest ownership occur on the Chattahoochee National Forest in fifth level watersheds not assigned to Watershed Management Areas. Forest Service ownership is quite small in these watersheds, therefore not justifying the establishment of separate management areas. The following information is provided for these two areas:

- A. **Coosawattee River – Lower** (HUC # 0315010208) – this area is located on the extreme southern end of the Cohutta portion of the Armuchee-Cohutta Ranger District on the lower southern slopes of Cold Spring Mountain and Brushy Top in three land lots, two in Murray County and one in Gilmer County. Tributaries of Sugar Creek that flows into the Coosawattee River drain these lands. National Forest acreage is approximately 300 acres, allocated to Management Prescription 0, Custodial Management and a small area of 9H, Management, Maintenance and Restoration of Plant Associations.
- B. **Nottely River – Lower** (HUC # 0602000209) – two small areas of National Forest lands occur in this HUC, located north and northeast of Nottely Lake, on the Brasstown Ranger District in Union County, GA. One area is located just below the dam forming Nottely Lake. Streams flowing from these lands are tributaries of Dooley Creek and Rhodes Creek. Allocation is to Management Prescription 7E1, Dispersed Recreation. National Forest acreage is approximately 350 acres. A second area is located north of Mary Gap on Gumlog Mountain, north of FS Road 819. Tributaries of Moccasin Creek in North Carolina drain this small area of NF land. National Forest on this tract covers about 45 acres, also allocated to Management Prescription 7E1.

CHATTAHOOCHEE  
NF WATERSHED  
MANAGEMENT  
AREAS

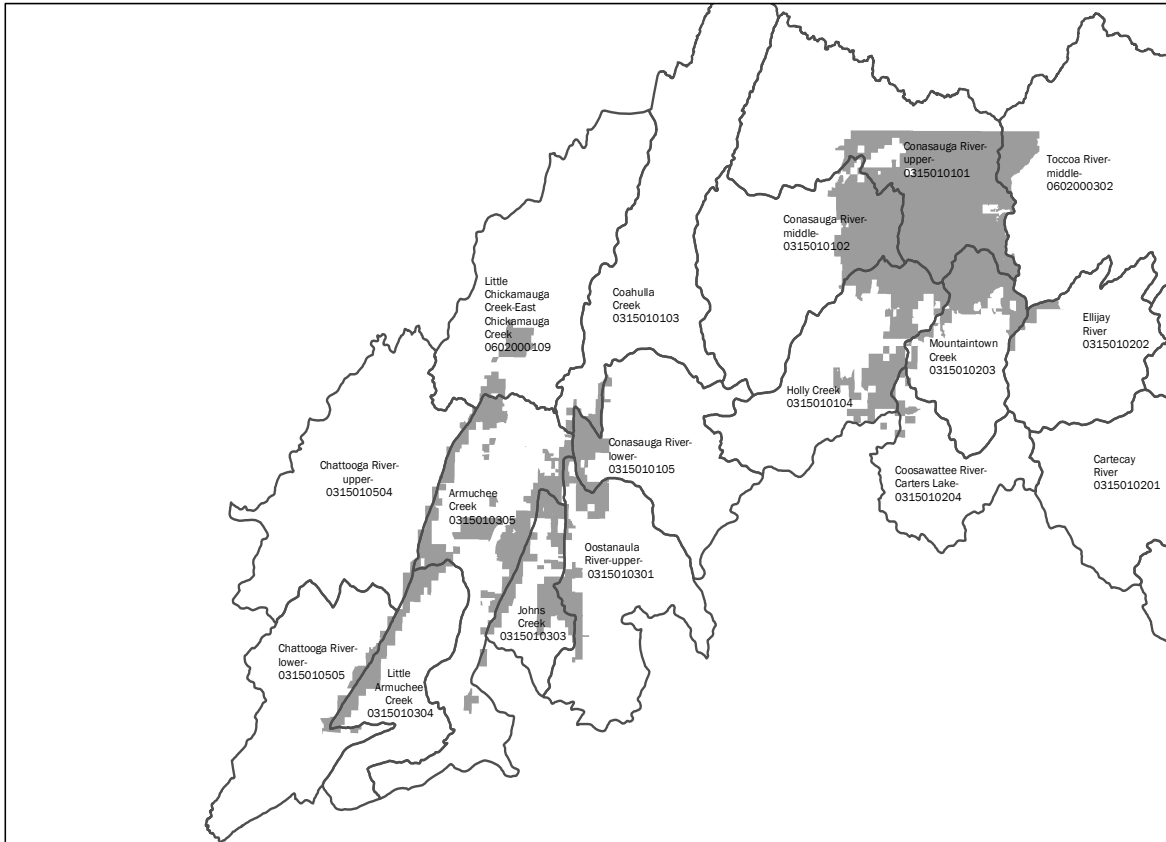


Figure 4- 1. Westside Watershed Management Areas with Forest Ownership Highlighted

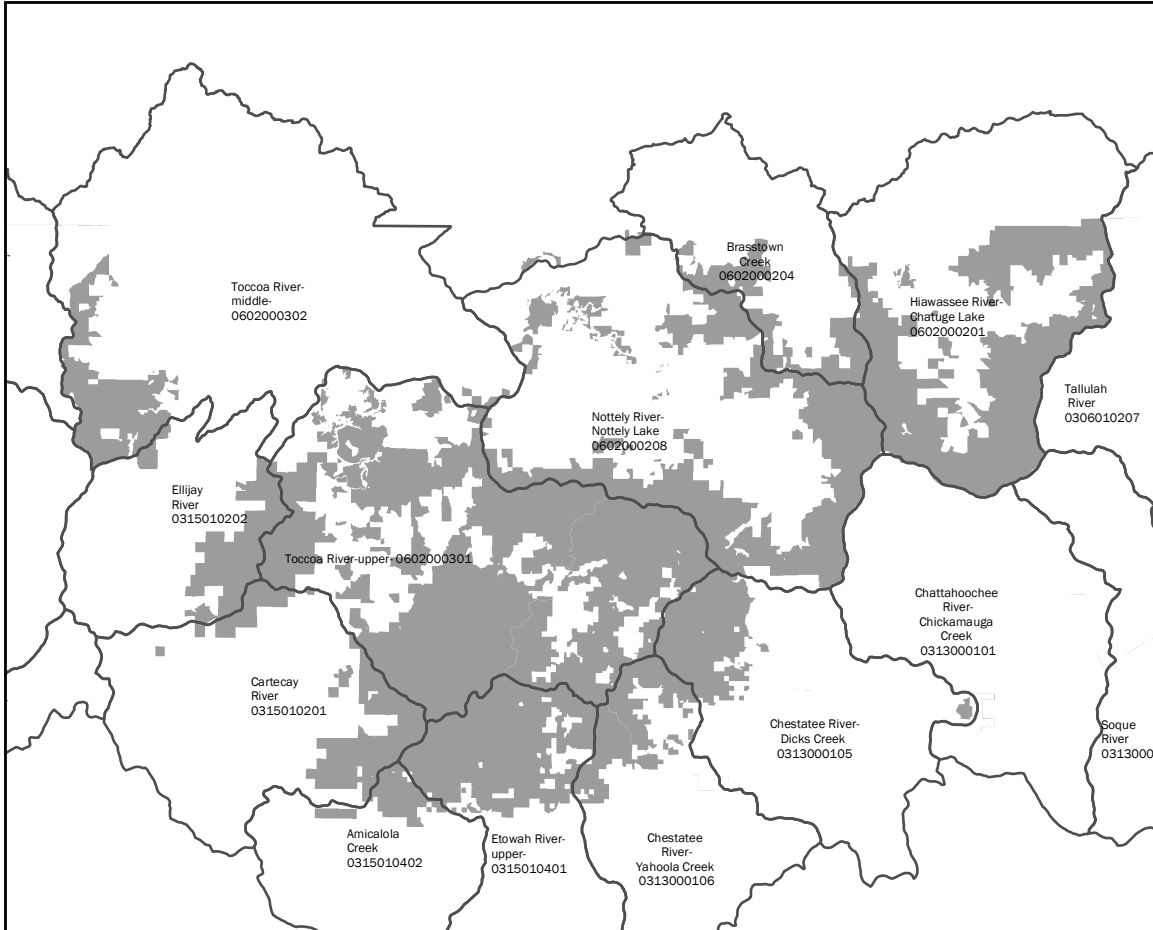


Figure 4- 2. Central Watershed Management Areas with Forest Ownership Highlighted

CHATTAHOOCHEE  
NF WATERSHED  
MANAGEMENT  
AREAS

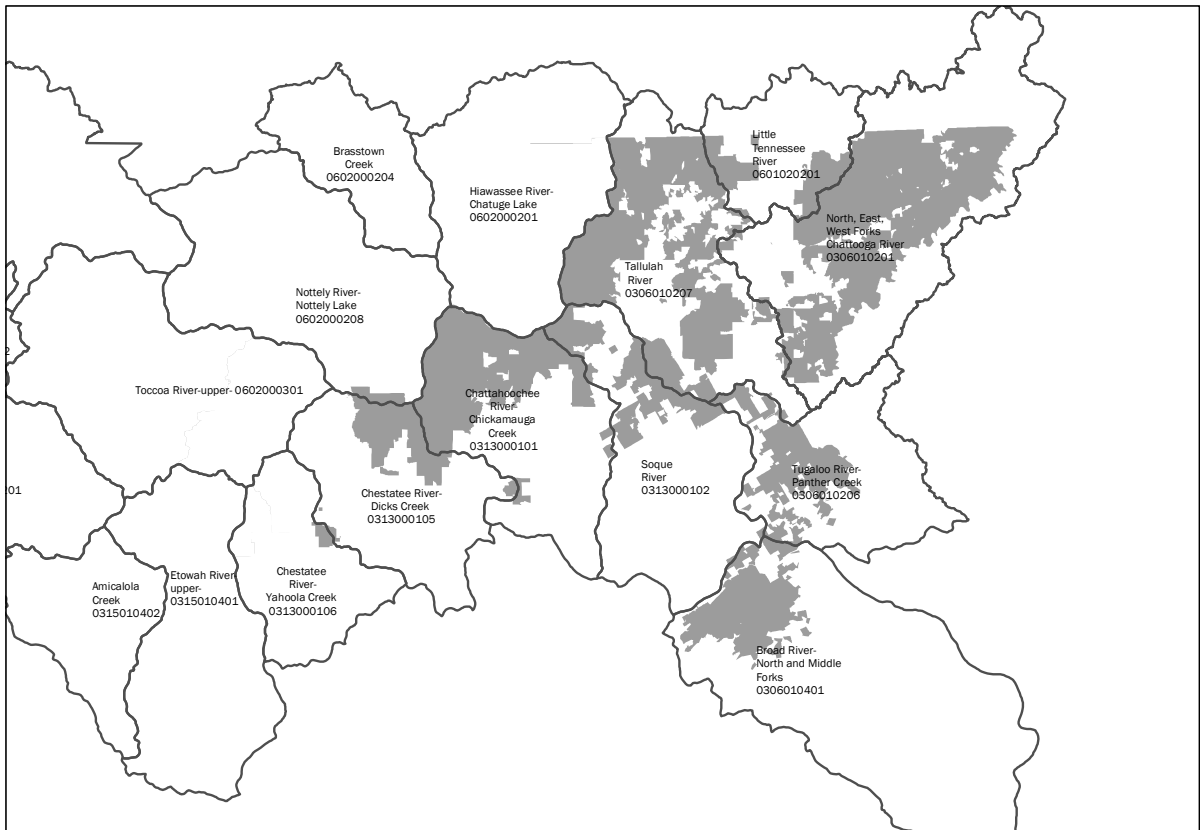


Figure 4- 3. Eastside Watershed Management Areas with Forest Ownership Highlighted



## OCONEE NATIONAL FOREST WATERSHED MANAGEMENT AREAS

Figure 4- 4 at the end of the Oconee WMA descriptions shows the location of each hydrologic unit.

### 33. Ocmulgee River/Big Sandy Creek (HUC # 0307010310)

General Description: drains western portion of Oconee National Forest in Jasper County, downstream of Lake Jackson and Lloyd Shoals Dam, GA Highway 16 crosses northern boundary, western half of HUC occurs on west side of Ocmulgee River in Butts County, GA; ends at Juliette

Major Streams on NF: White Creek, Wise Creek, Harmon Pye Branch, Rush Creek, Kinnard Creek, and Ocmulgee River, 56 miles of perennial stream

Public Water Supply: none

Landscape Features: Wise Creek Recreation site, Ocmulgee River horseback trails

Watershed Area: – 194 square miles (124,160 ac), National Forest lands – 12%

**Table 4- 34. Watershed Management Area - Ocmulgee River/Big Sandy Creek**

HUC # 0307010310	Rx Number	Acres
Recommended Wild & Scenic Rivers – Scenic Segments	2.B.2	3,043.0
Areas Managed to Restore or Maintain Old Growth Characteristics	6.B	424.4
Red-Cockaded Woodpecker Sub-Habitat Management Areas	8.D.1	8,370.8
Rare Communities	9.F	106.1
Management, Maintenance & Restoration of Plant Associations	9.H	2,674.0
<b>TOTAL NATIONAL FOREST ACRES</b>		<b>14,618.3</b>

### 34. Ocmulgee River/Rum Creek (HUC # 0307010313)

General Description: southwestern portion of Oconee in Jasper and Jones Counties, Piedmont Wildlife Refuge, western half of HUC is located in Monroe County on western side of Ocmulgee River, HUC ends near Dames Ferry

Major Streams: Falling Creek, Gladesville Creek, Little Gladesville Creek, Stalking Head Creek, Caney Creek, Hurricane Creek, 62 miles of perennial streams

Public Water Supply: none

Landscape Features: Piedmont Wildlife Refuge & Headquarters, Hitchiti Experimental Forest & Headquarters, Ernst Brender Demonstration Forest, feldspar mining, Iredell soils in “glady” areas, Jarrell Historical Plantation State Park, GA Highway 11 on eastern drainage divide

Watershed Area: 215 square miles (137,600 ac), National Forest lands – 13%

OCONEE NF  
WATERSHED  
MANAGEMENT  
AREAS**Table 4- 35. Watershed Management Area - Ocmulgee River/Rum Creek**

HUC # 0307010313	Rx Number	Acres
Hitchiti Experimental Forest	3.B	4,637.6
Botanical/Zoological Areas	4.D	666.8
Outstandingly Remarkable Streams	4.H	722
Red-cockaded Woodpecker Habitat Management Areas	8.D	3.6
Red-cockaded Woodpecker Sub-Habitat Management Areas	8.D.1	7,303.0
Rare Communities	9.F	248.3
Management, Maintenance & Restoration of Plant Associations	9.H	4,055.7
<b>TOTAL NATIONAL FOREST ACRES</b>		<b>17,637</b>

**35. Big Cedar Creek (HUC # 0307010117)**

General Description – south central portion of Oconee in Jasper, Jones and Putnam Counties, City of Monticello in upper headwaters,

Major Streams on NF: Glady Creek, Marshal Creek, Cedar Creek, Big Cedar Creek, Miller Creek, Rock Creek, upper end of Lake Sinclair reservoir managed by Georgia Power, 74 miles of perennial streams

Public Water Supply: City of Monticello withdrawal on Pope's Branch NW of city

Landscape Features: Monticello, Cedar Creek Wildlife Management Area, Hillsboro Lake Recreation Site, Miller Creek Lake, Resseaus Crossroads, Lake Sinclair Recreation Site, GA Highway 11 on western drainage divide, GA Highway 212 on northern drainage divide, US 129/GA 44

Watershed Area: – 217 square miles (138,879 ac), National Forest lands – 16%

**Table 4- 36. Watershed Management Area - Big Cedar Creek**

HUC # 0307010117	Rx Number	Acres
Custodial Management	0	3.1
Botanical – Zoological Areas	4.D	218.5
Outstandingly Remarkable Streams	4.H	1,951.4
Dispersed Recreation Areas	7.E.1	967.1
Red-cockaded Woodpecker Habitat Management Areas	8.D	14,014.7
Rare Communities	9.F	27.9
Management, Maintenance and Restoration of Plant Associations	9.H	4,779
<b>TOTAL NATIONAL FOREST ACRES</b>		<b>21,924.1</b>

**36. Murder Creek (HUC # 0307010116)**

General Description: central portion of Oconee in Putnam and Jasper Counties, Lake Sinclair (Georgia Power) downstream

Major Streams on NF: Murder Creek, Beaverdam Creek, Hitchcock Branch, Baker Branch, 40 miles of perennial stream

Public Water Supply: none

Landscape Features: Murder Creek Research Natural Area

Watershed Area: 207 square miles (132,480 ac), National Forest lands – 11%

**Table 4- 37. Watershed Management Area - Murder Creek**

HUC # 0307010116	Rx Number	Acres
Murder Creek Research Natural Area	4.B.1	1,003.7
Outstandingly Remarkable Streams	4.H	1,533
Areas Managed to Restore or Maintain Old-Growth Characteristics	6.B	1,191.2
Dispersed Recreation Areas	7.E.1	17.2
Red-cockaded Woodpecker Habitat Management Areas	8.D	7,993.5
Management, Maintenance & Restoration of Plant Associations	9.H	3,086.2
<b>TOTAL NATIONAL FOREST ACRES</b>		<b>14,746.3</b>

**37. Little River, Lower (HUC #0307010115)**

General Description: east central portion of Oconee Ranger District upriver from Lake Sinclair reservoir, Eatonton

Major Streams on NF: Little River, Pearson Creek, Glady Creek, Little Glady Creek, 41 miles of perennial streams

Public Water Supply: none

Landscape Features: City of Eatonton, Eatonton public water supply withdrawal on Little River, Oconee Ranger District office and work center, Rock Eagle 4-H Camp

Watershed Area: 79 square miles (50,560 ac), National Forest lands – 28%

**Table 4- 38. Watershed Management Area - Little River, Lower**

HUC #0307010115	Rx Number	Acres
Recommended Wild & Scenic Rivers – Scenic Segments	2.B.2	1,530.3
Administrative Sites	5.A	101.2
Red-Cockaded Woodpecker Habitat	8.D	8,776
Rare Communities	9.F	20.1
Management, Maintenance & Restoration of Plant Associations	9.H	3,644.5
<b>TOTAL NATIONAL FOREST ACRES</b>		<b>14,163.2</b>

OCONEE NF  
WATERSHED  
MANAGEMENT  
AREAS

### 38. Little River, Upper (HUC # 0307010114)

General Description: northwest corner of Putnam County, west of National Forest proclamation boundary

Major Streams on NF: Little River, Big Indian Creek, 3.4 miles of perennial streams

Public Water Supply: none

Landscape Features: B.F. Grant Experimental Forest (UGA), Mt. Gilead Church area

Watershed Area: 218 square miles (139,519 ac), National Forest lands – 1%

**Table 4- 39. Watershed Management Area - Little River, Upper**

HUC # 0307010114	Rx Number	Acres
Recommended Wild & Scenic Rivers – Scenic Segments	2.B.2	281.1
Red-Cockaded Woodpecker Habitat	8.D	554.7
Management, Maintenance & Restoration of Plan Associations	9.H	193.3
<b>TOTAL NATIONAL FOREST ACRES</b>		<b>1,029.1</b>

### 39. Oconee River/Sugar Creek (HUC # 0307010110)

General Description: central portion of Lake Oconee reservoir managed by Georgia Power, Interstate 20 bisects watershed, City of Madison in headwaters of HUC, located in Putnam, Morgan and Greene Counties

Major Streams: none on National Forest, Oconee River (within Lake Oconee), Sugar Creek, Glade Branch, Highlog Branch, Lick Creek

Public Water Supply: none

Landscape Features: Lake Oconee, Interstate 20, U.S. Highway 441/129, GA Highway 44

Watershed Area: 168 square miles (107,520 ac), National Forest lands – 8 acres or <0.01% of total, only NF ownership is located along US 441/129 south of Henderson Grove Church on ridgeline, near Highlog Branch

**Table 4- 40. Watershed Management Area - Oconee River/Sugar Creek**

HUC # 0307010110	Rx Number	Acres
Red-Cockaded Woodpecker Habitat Management Areas	8.D	8.3
<b>TOTAL NATIONAL FOREST ACRES</b>		<b>8.3</b>

**40. Apalachee River, Lower (HUC # 0307010109)**

General Description – forms western boundary of National Forest lands in Greene County, major tributary to Oconee River in Greene, Morgan, and Oconee Counties

Major Streams on NF: tributaries to Apalachee River, 16 miles of perennial streams

Public Water Supply: none

Landscape Features: Lake Oconee reservoir managed by Georgia Power as pump storage facility to support Lake Sinclair downstream, Trembling Bridge rifle range, Swords Boat Ramp at lower end of HUC on Lake Oconee, US 278/GA 12, Greshamville

Watershed Area: 178 square miles (113,920 ac), National Forest lands – 4%

**Table 4- 41. Watershed Management Area - Apalachee River, Lower**

HUC # 0307010109	Rx Number	Acres
Dispersed Recreation Areas with Vegetation Management	7.E.2	2,078.5
Management, Maintenance & Restoration of Plant Associations	9.H	2,765.5
<b>TOTAL NATIONAL FOREST ACRES</b>		<b>4,844</b>

**41. Oconee River/Big Creek (HUC # 0307010106)**

General Description: northeastern portion of Oconee in Greene and Oglethorpe Counties

Major Streams on NF: Falling Creek, Sandy Creek, 18 miles of perennial streams on NF

Public Water Supply: none

Landscape Features: Scull Shoals Cultural Heritage site, Scull Shoals Experimental Forest, Oconee River Recreation site

Watershed Area: 154 square miles (98,560 ac), National Forest lands – 5%

**Table 4- 42. Watershed Management Area - Oconee River/Big Creek**

HUC # 0307010106	Rx Number	Acres
Scull Shoals Experimental Forest	3.B	3,092.8
Botanical and Zoological Areas	4.D	217.5
Cultural and Heritage Areas	4.E.1	111.8
Dispersed Recreation Areas w/Vegetation Management	7.E.2	1,295.4
Management, Maintenance & Restoration of Plant Associations	9.H	291.7
<b>TOTAL NATIONAL FOREST ACRES</b>		<b>5,009.2</b>

OCONEE NF  
WATERSHED  
MANAGEMENT  
AREAS

## 42. Oconee River/Greenbrier Creek (HUC # 0307010107)

General Description: North central portion of Oconee in Greene County, east of Lake Oconee, north of Interstate 20, village of Penfield

Major Streams on NF: Harris Creek, Fishing Creek, Town Creek, Beaverdam Creek, 80 miles of perennial stream

Public Water Supply: none

Landscape Features: Redlands Wildlife Management Area, Redlands Boat Ramp on Lake Oconee, Roberts Bicycle Trails, Scull Shoals Experimental Forest, Dyar Pasture waterfowl area & boat ramp, US 278/GA 12

Watershed Area: 157 square miles (100,480 ac), National Forest lands – 21%

**Table 4- 43. Watershed Management Area - Oconee River/Greenbrier Creek**

HUC # 0307010107	Rx Number	Acres
Custodial Management	0	139.8
Scull Shoals Experimental Forest	3.B	1,632.3
Botanical/Zoological Areas	4.D	110.7
Outstandingly Remarkable Streams	4.H	603
Administrative Sites	5.A	0.5
Dispersed Recreation Areas with Vegetation Management	7.E.2	4,725.1
Rare Communities	9.F	191.5
Management, Maintenance & Restoration of Plant Associations	9.H	13,381.4
<b>TOTAL NATIONAL FOREST ACRES</b>		<b>20,783.8</b>

## 43. Richland Creek (HUC # 0307010111)

General Description: watershed surrounding Greensboro, Georgia in Greene County, tributary to Lake Oconee, bisected by Interstate 20

Major Streams on NF: tributaries of Rush Creek – flows into Richland Creek north of Greensboro, 1 mile of perennial streams on NF

Public Water Supply: City of Greensboro withdrawal on Lake Oconee west of city

Landscape Features: City of Greensboro, Interstate 20 and GA Highway 44 bisect watershed, US Highway 278

Watershed Area: 159 square miles (101,760 ac), National Forest lands – <1%

**Table 4- 44. Watershed Management Area - Richland Creek**

HUC # 0307010111	Rx Number	Acres
Dispersed Recreation Areas w/Vegetation Management	7.E.2	285.2
Management, Maintenance & Restoration of Plant Associations	9.H	164.3
<b>TOTAL NATIONAL FOREST ACRES</b>		<b>449.5</b>

OCONEE NF  
WATERSHED  
MANAGEMENT  
AREAS

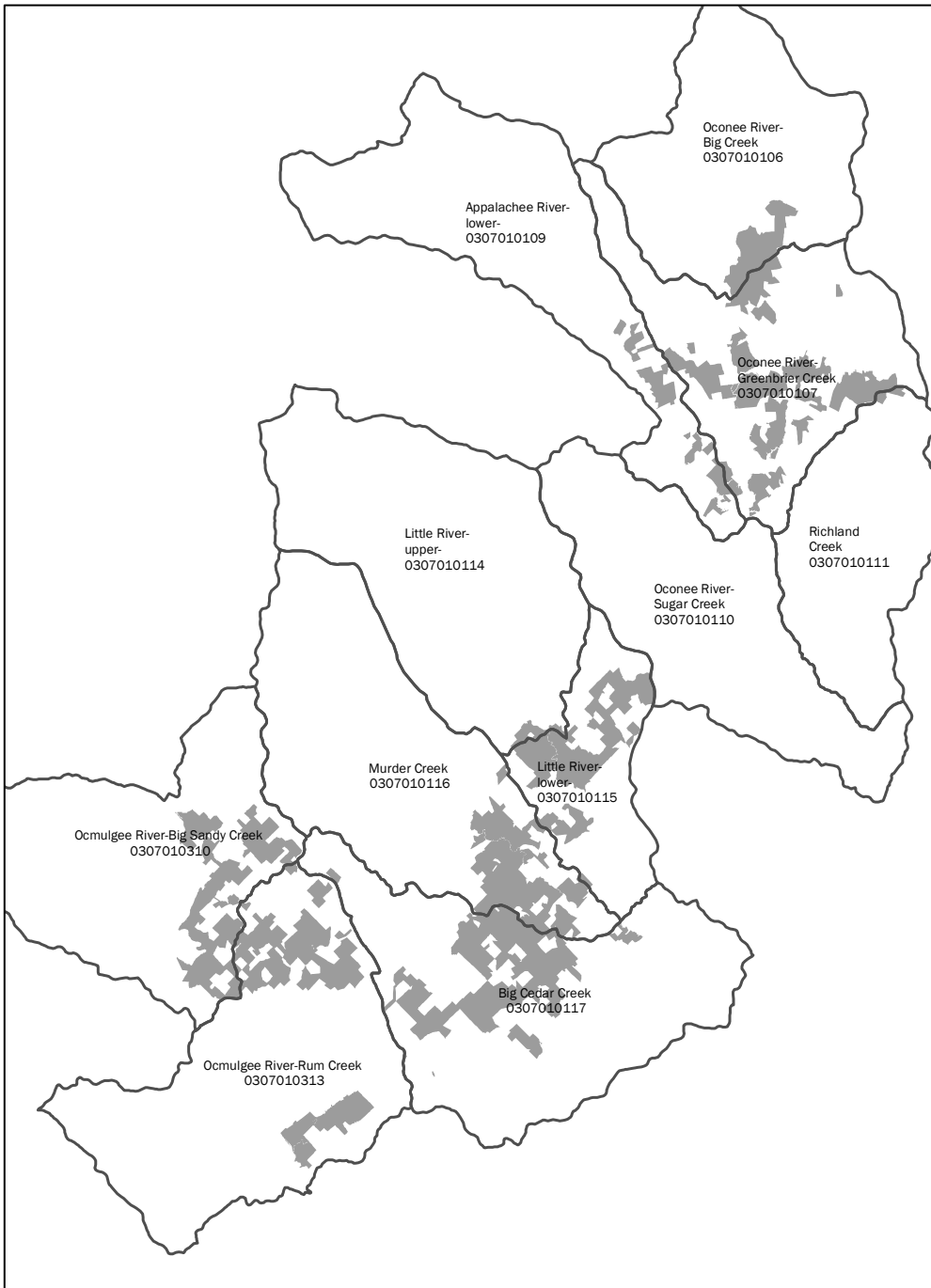


Figure 4- 4. Oconee Watershed Management Areas with Forest Ownership Highlighted

**THIS PAGE INTENTIONALLY BLANK.**