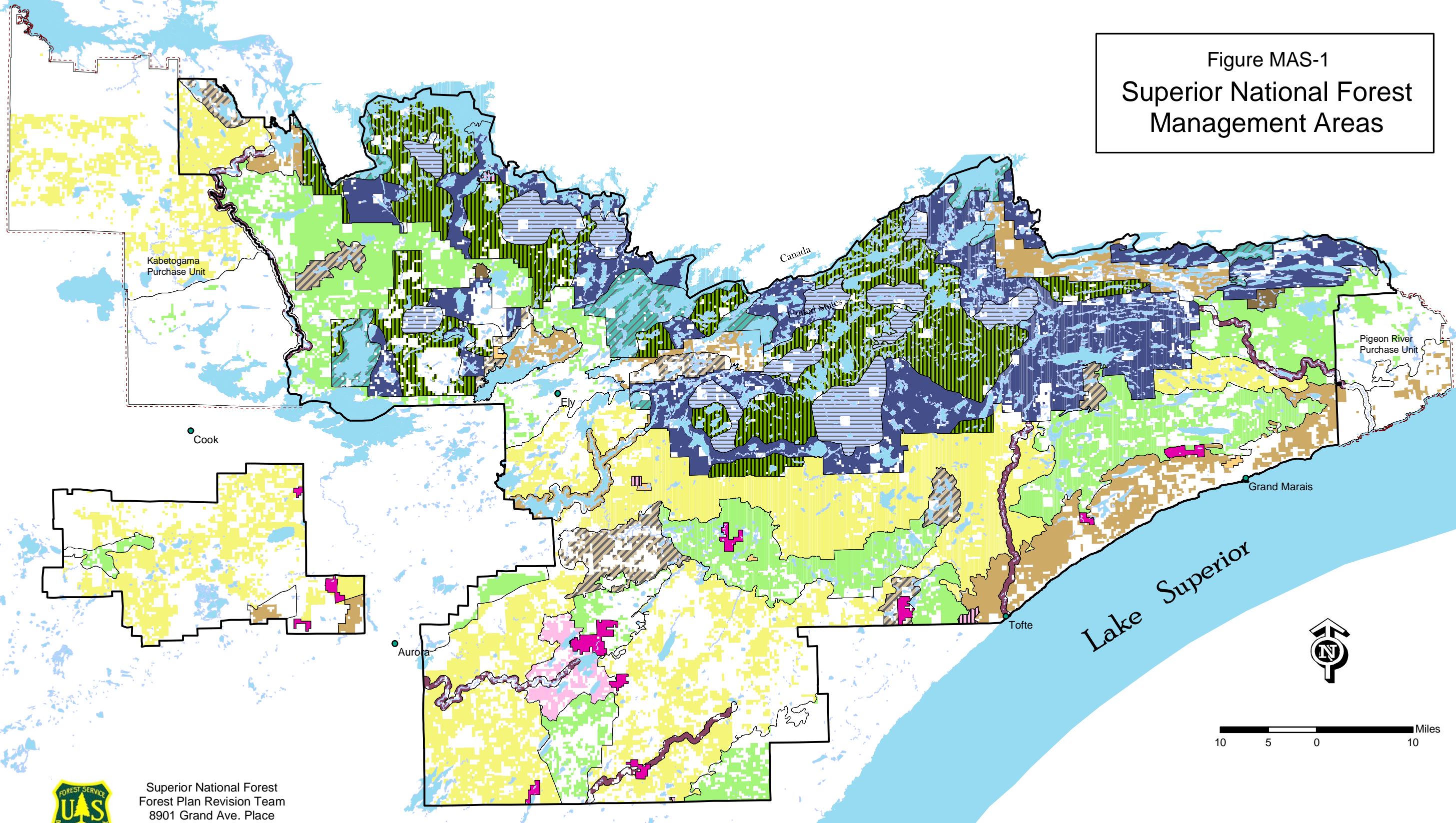


Figure MAS-1
Superior National Forest
Management Areas



61



Superior National Forest
Forest Plan Revision Team
8901 Grand Ave. Place
Duluth, Minnesota 55808
(218) 626-4300

The Forest Service uses the most current and complete data available. Geographical Information System (GIS) data and product accuracy may vary from map to map. Data and maps may be developed from sources of differing accuracy, accurate only at certain scales, based on modeling or interpretation other than for which they were created, may yield inaccurate or misleading results. The Forest Service reserves the right to correct, update, modify or replace GIS products without notification. The Forest Service will not be liable for any activity involving this information.

The USDA Forest Service is an equal opportunity provider.
June 2004

Legend

- Forest Boundary
- - - Purchase Unit Boundaries
- Lakes

Management Areas

- General Forest
- General Forest - Longer Rotation
- Recreation Use in a Scenic Landscape
- Eligible Wild, Scenic, and Recreational River
- Semi-primitive Motorized Recreation
- Semi-primitive Non-motorized Recreation
- Unique Biological Areas
- Riparian Emphasis Areas
- Research Natural Areas
- Candidate Research Natural Areas
- Pristine Wilderness
- Primitive Wilderness
- Semi-primitive Non-motorized Wilderness
- Semi-primitive Motorized Wilderness

