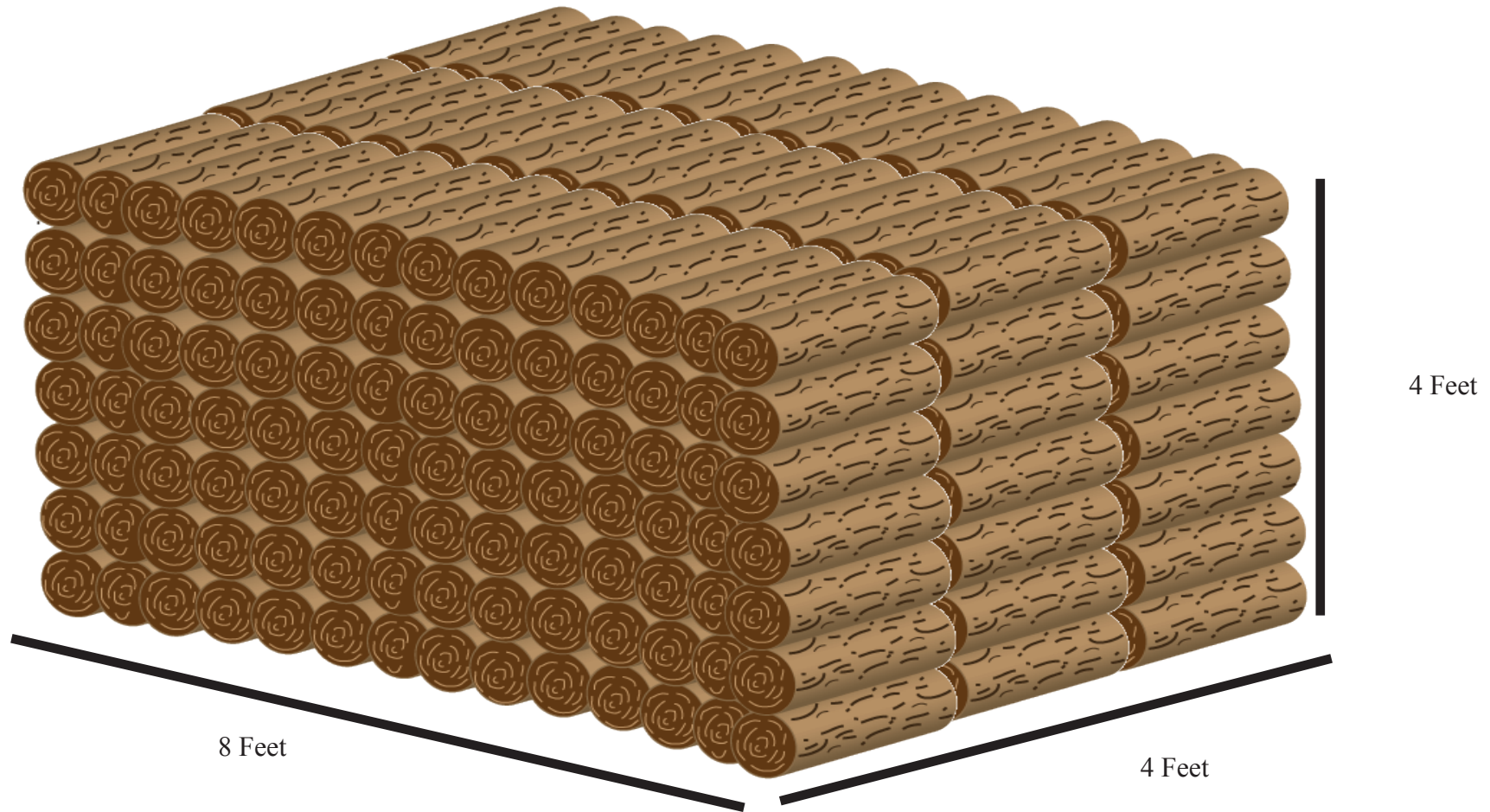


The US Forest Service is required to sell wood
in units of hundred cubic feet (ccf).

Your permit allows you to cut 4 ccf, which is equivalent to 5 cords of wood,
or 15 face cords (also called rick cords or a rick).



A cord of wood is 4 feet by 4 feet by 4 feet.
A face cord (or rick) is 4 feet by 8 feet by 16 inches.