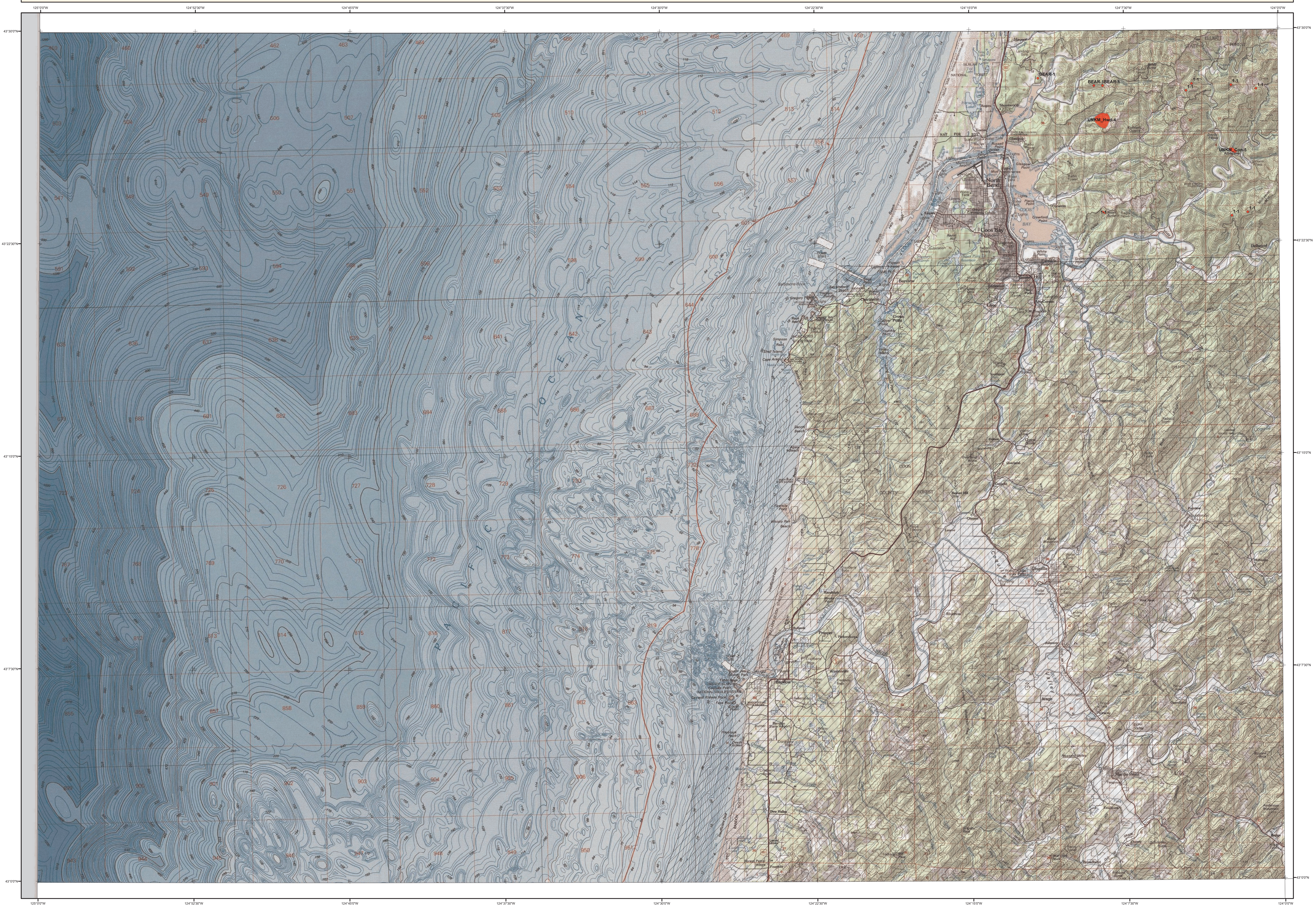


2021 Aerial Insect and Disease Survey

USGS 100K Quad: COOS BAY - A143124; 1L



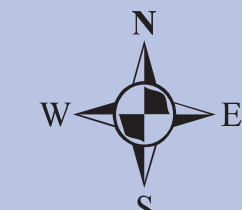
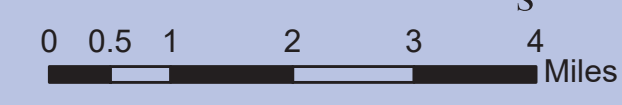
Label	Damaging Agent	Primary Host
1 BEAR	Mortality Agents Douglas-fir Beetle	Douglas-fir
UNKM_Con	Bears	Douglas-fir
UNKM_Hwd	Unknown	Unknown conifer
		Unknown hardwood

Defoliators

NOTE: Only the damage types present in this quad are listed in this legend. The cause of damage is described by an alpha numeric label, which is followed by the number of trees affected for points, or the percent affected code for polygons (1 - Very Light, 2 - Light, 3 - Moderate, 4 - Severe, 5 - Very Severe).

Other Damaging Agents

USGS 100K Quad: COOS BAY - A143124; 1L
2021 Aerial Insect and Disease Survey
Map Scale: 1:100,000
Date: 30 December 2021



- Damage Points**
- Mortality
 - Defoliation
 - Unknown Damage
- Damage Areas**
- Mortality
 - Defoliation
 - Unknown Damage

- Areas Not Flown During Aerial Survey
- 2021 Wildfires > 100 acres
- WDR Managed Lands

Vicinity Map



The base map is an ESRI map service of TOPOI data (Copyright 2013 National Geographic) which is comprised of seamless, scanned images of USGS paper topographic maps. For more info on this map see http://go.to.arcgisonline.com/maps/USA_Topo_Maps.

A data dictionary, digital copies of this map and geospatial insect and disease data are available at: <http://www.fs.usda.gov/detail/forest-grasslandhealth/insects-diseases/>

How the Aerial Surveys Are Conducted

Data represented on this map are based on trees visibly affected by forest insects and diseases detected and recorded during aerial survey flights conducted by the USDA Forest Service, the Washington Department of Natural Resources and the Oregon Department of Forestry. Observers have just a few seconds to recognize the color difference between healthy and damaged trees of different species; diagnose causal agents correctly; estimate intensity; delineate the extent of damage; and precisely record this information on a georeferenced, digital map. Air turbulence, cloud shadows, distance from aircraft, haze, smoke and observer experience can all affect the quality of the survey. These data summaries provide an estimate of conditions on the ground and may differ from estimates derived by other methods.

The aerial survey provides information on the current status for many causal agents and is important when examining insect activity trends by comparing historical and current survey data over large areas.

Overview surveys are a 'snap shot' in time and therefore may not be timed to accurately capture the true extent or severity of a particular disturbance activity. Specially designed surveys with modified flight patterns and timing may be conducted to more accurately delineate the extent and severity of a particular disturbance agent. Special surveys, such as Swiss needle cast surveys, are conducted when resources are available to address situations of sufficient economic, political or environmental importance.

DIRECT ALL INQUIRIES TO:



Oregon Department of Forestry
 Forest Health Management
 2600 State Street
 Salem, OR 97310

-- OR --



USDA Forest Service, Region 6
 State and Private Forestry
 Forest Health Protection
 PO Box 3623
 Portland, Oregon 97208

DISCLAIMER
 Forest Health Protection (FHP), Washington Department of Natural Resources (WDNR) and Oregon Department of Forestry (ODF) strive to maintain an accurate Aerial Detection Survey (ADS) Dataset, but due to the conditions under which the data are collected, FHP, WDNR and ODF shall not be held responsible for missing or inaccurate data. ADS are not intended to replace more specific information. An accuracy assessment has not been done for this dataset; however, ground checks are completed in accordance with local and national guidelines: http://www.fs.fed.us/foresthealth/aviation/quality_insurance.shtml. Maps and data may be updated without notice. Please cite: "USDA Forest Service, Forest Health Protection, Washington Department of Natural Resources, Wildlife Division, Forest Health, and Oregon Department of Forestry, Forest Health Management" as the source of this data.