



Kootenai National Forest

Recreation Fee Program Accomplishment Highlights 2020

Dock Replacement



Rexford Bench Campground new dock.

The forest replaced the dock at Rexford Bench Campground. This dock is used to assist visitors when loading and unloading their boat into the Kooconusa Reservoir. Early arrival to the site during the winter months ensures that the dock is ready for use come spring and summer. The dock was funded from the \$35,000 in recreation fees collected at this campground.

Recreation Fee Dollars

Recreation fee dollars are an investment in outdoor recreation. They support and enhance:

- Public safety
- Recreation site maintenance and improvements
- Educational experiences
- Informational wayside exhibits
- Youth programs and partnerships
- Interpretive programs

Current and future generations benefit as 80-95% of the funds are reinvested in the facilities and services that visitors enjoy, use, and value.



Letting in the Light

The forest cleared the Dorr Skeels Campground of diseased trees to make way for an improvement project. Crews cut trees into a manageable size and advertised to the public for removal by those holding a current firewood permit. By removing some of these trees, the site now provides more sunlight.

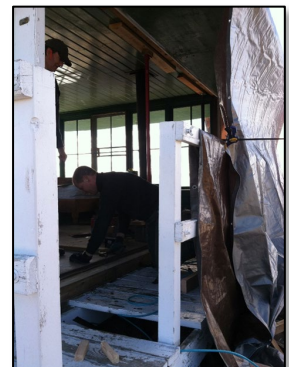


Dorr Skeels Campground tree removal providing more sunlight.



Lookout Repairs

Sex Peak Lookout needed a wall replacement. The lookout was built in 1948 and needed some major repairs on the windward side of the building. The forest removed and replaced the windows and major support beams in historic fashion. In addition, the cabin received new exterior and interior paint and crews installed new flooring. This lookout is one that can be accessed by a car making it one of the most popular lookouts on the forest.



The entire wall was removed and replaced.

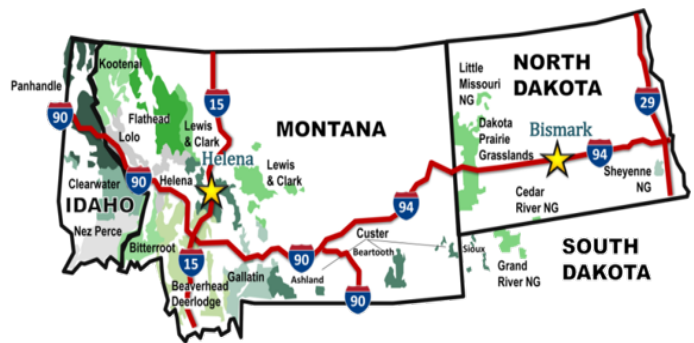
Other Accomplishments

- Maintained recreation fee sites to include mowing, painting, collecting trash, cleaning, pumping toilets and septic tanks, and providing utilities.
- Identified and removed hazard trees and limbs at fee sites.
- Tested public water systems for health and safety.
- Supported volunteers, including 19 campground host sites. Hosts provide information about the area, appropriate use of public lands and instill an appreciation for the area's natural and cultural history.
- Cut and delivered firewood to fee campgrounds.



Kootenai Falls Swinging Bridge located between Libby and Troy on the Kootenai River

Northern Region



Contacts

Kootenai National Forest
Recreation Fee Program Contact
406-293-6211
 Email: Mary.Laws@usda.gov
 Online: www.fs.usda.gov/kootenai

Regional Contact
406-329-3587
 Email: Jeffrey.P.Ward@usda.gov

Revenue & Expenditures

Revenue*	Forest	Region
Recreation Fees	\$377,274	\$2,609,509
Special Uses	\$27,066	\$647,951
Interagency Passes	\$3,600	\$94,980
Total	\$407,940	\$3,352,440
Expenditures	Forest	Region
Repair & Maintenance	\$100,395	\$1,598,853
Visitor Services	\$142,642	\$794,329
Law Enforcement	\$3,578	\$68,824
Habitat Restoration	\$0	\$107,098
Fee Agreements	\$0	\$0
Collections/Overhead	\$7,292	\$275,233
Total	\$253,907	\$2,844,337