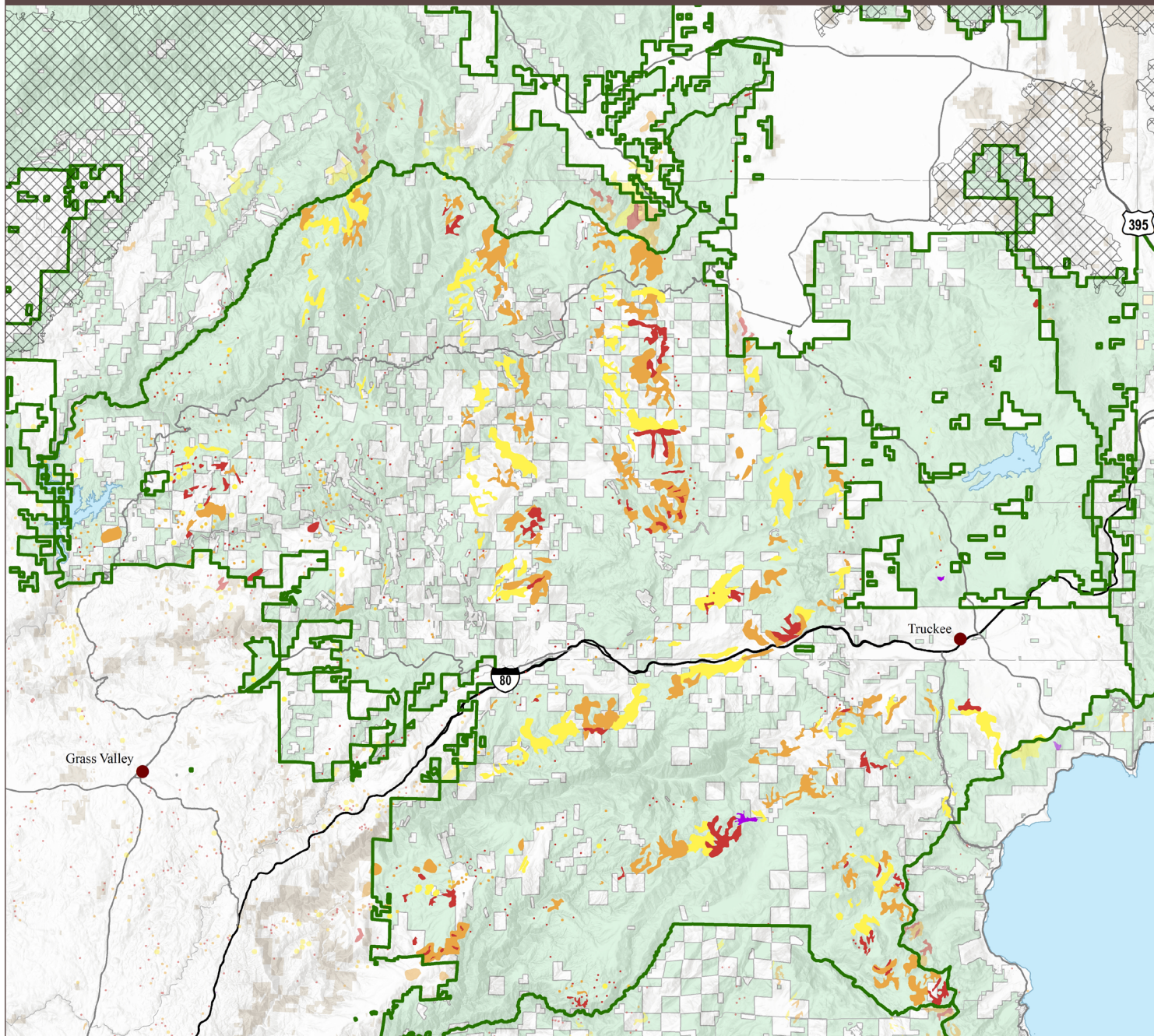




AERIAL DETECTION SURVEY, 2021 TAHOE NATIONAL FOREST



Forest Disturbance Activity and Trends

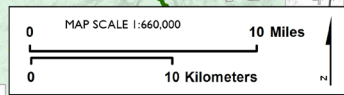
Affected Host	Acres 2019	Acres 2021
California red fir	139,347	67,355
Ponderosa pine	485	7,861
White fir	53,618	3,390
Lodgepole pine	1,567	266
Sugar pine	1	219
Jeffrey pine	1,540	106

LAND

- Forest Service
- Tribal Land
- Bureau of Land Management

BOUNDARIES

- Area of Interest
- County



USGS, NGA, NASA, CGIAR, N. Robinson, NCEAS, M.S. Osborne, Geospatial Science Center, The University of California

TREE MORTALITY
(dead trees per acre)

- Less than 5
- 5 - 10
- 10 - 15
- 15 - 20
- 20 - 35
- More than 35

TREE DAMAGE

- not mortality

MAJOR FIRES

- 2019 - 2021

Highlights

Overall mortality decreased from an estimated 1,458,000 trees across 196,000 acres in 2019, to ~998,000 dead trees across 79,000 acres in 2021.

- California red fir mortality decreased from an estimated 1,047,000 trees across 139,000 acres in 2019 to ~789,000 dead trees across 67,000 acres in 2021. Mortality was common Forest-wide.
- Ponderosa pine mortality increased from an estimated 1,500 trees across 500 acres in 2019 to 182,000 dead trees across 7,900 acres in 2021. Mortality was common throughout eastern areas of the Forest and was particularly intense north of Forest Hill.
- White fir mortality decreased from an estimated 386,000 trees across 54,000 acres in 2019 to ~13,000 dead trees across 3,400 acres in 2021. Mortality was common Forest-wide and was typically at light intensity.
- Lodgepole pine mortality increased from an estimated 3,200 trees across 1,600 acres in 2019 to ~11,000 dead trees across 270 acres in 2021 located southwest of Truckee.
- Sugar pine mortality increased from approximately 40 trees in 2019 to ~220 dead trees across 220 acres in 2021 located east of Camptonville.
- Jeffrey pine mortality decreased from an estimated 6,600 trees across 1,500 acres in 2019 to ~3,100 dead trees across 100 acres in 2021, located in areas north of French Meadows Reservoir.