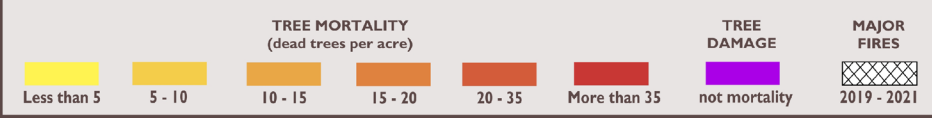
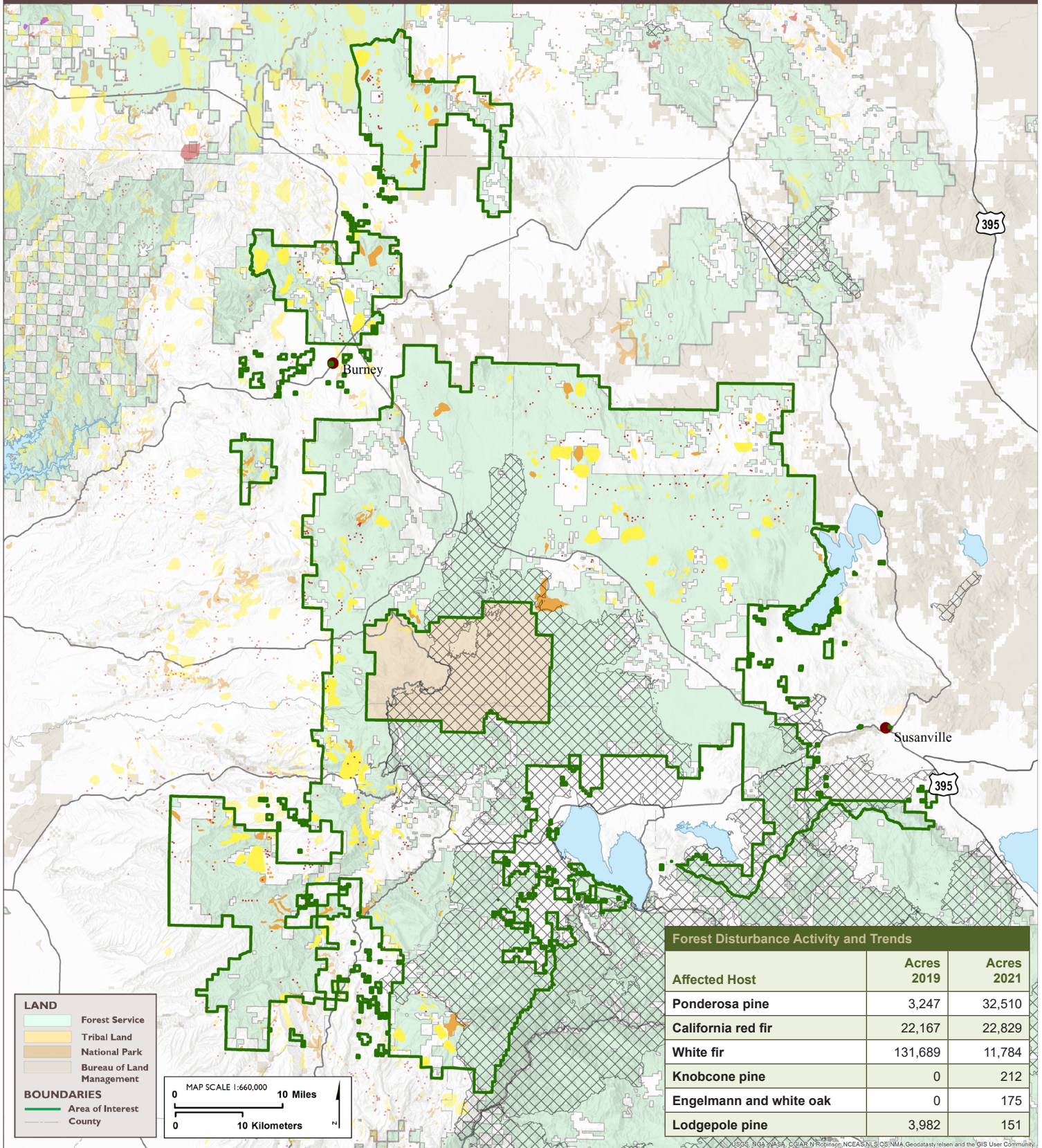




# AERIAL DETECTION SURVEY, 2021 LASSEN NATIONAL FOREST



USFS, NGA, NASA, CGIAR, Robinson, NCEAS, NLS, OSNMA, Geodatasys, reisen and the GIS User Community

## Highlights

Overall mortality in the Lassen National Forest decreased from approximately 553,000 dead trees across 160,000 acres in 2019 to ~275,000 dead trees across 67,000 acres in 2021. However, most of the Forest was not surveyed in 2021 due to the Dixie Fire and other large recent fires.

- California red fir mortality increased from an estimated 66,000 dead trees across 22,000 acres in 2019 to ~98,000 dead trees across 23,000 acres in 2021, located around Crater Mountain and several northern areas with an area of moderate intensity located north of Cone Mountain.
- Lodgepole pine mortality decreased from approximately 8,700 dead trees across 4,000 acres in 2019 to ~340 dead trees across 150 acres in 2021.
- Ponderosa pine mortality increased from an estimated 24,000 dead trees across 3,200 acres in 2019 to ~140,000 dead trees across 33,000 acres in 2021 and was particularly active around Blacks Mountain.
- White fir mortality decreased from 454,000 dead trees across 132,000 acres in 2019 to 34,000 dead trees across 12,000 acres in 2021 and was particularly active west of Grays Valley.



Moderate ponderosa pine mortality attributed to western pine beetle east of Flatiron Mountain, Lassen National Forest.