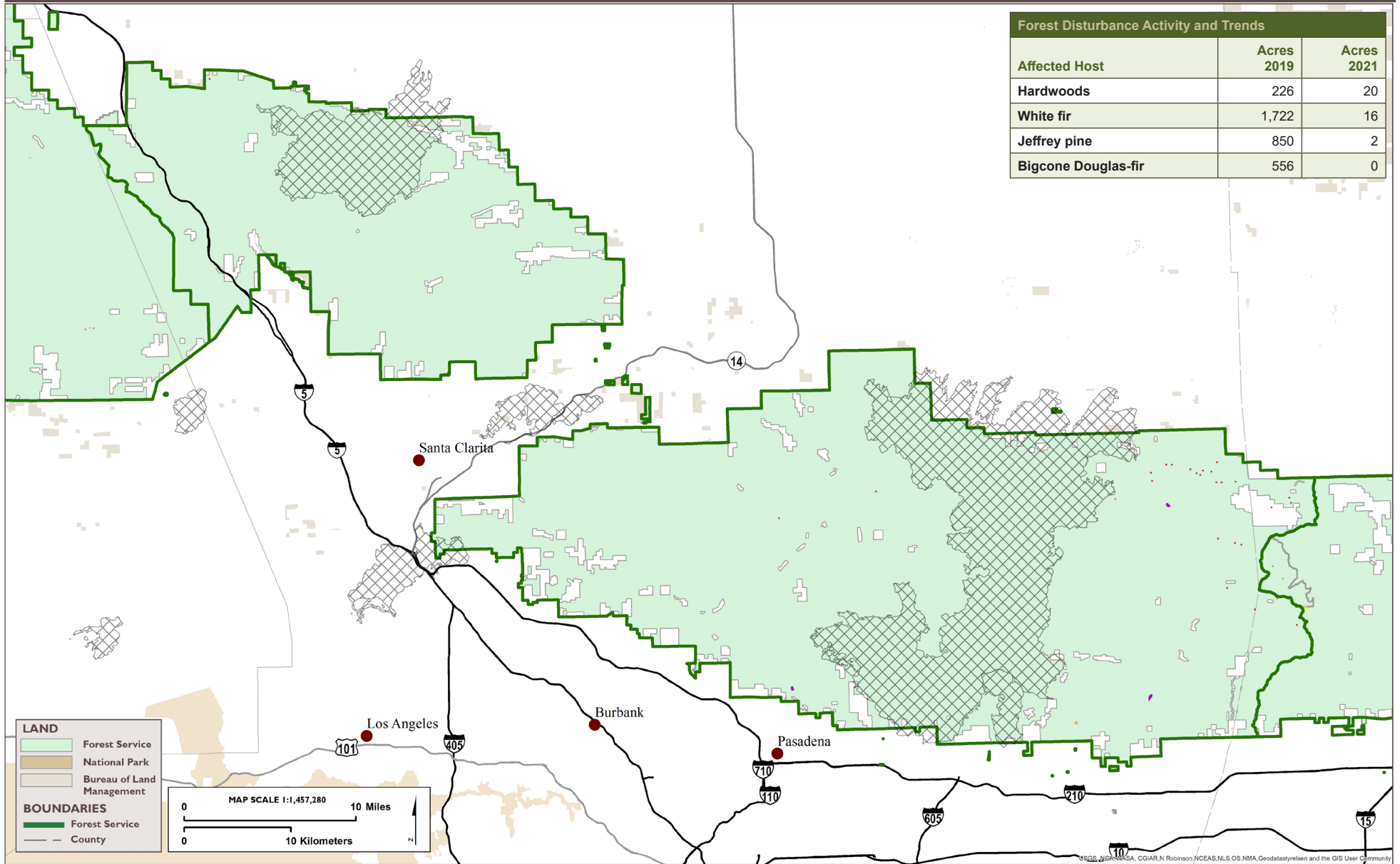




# AERIAL DETECTION SURVEY, 2021 ANGELES NATIONAL FOREST

### Forest Disturbance Activity and Trends

Affected Host	Acres 2019	Acres 2021
Hardwoods	226	20
White fir	1,722	16
Jeffrey pine	850	2
Bigcone Douglas-fir	556	0



**LAND**

- Forest Service
- National Park
- Bureau of Land Management

**BOUNDARIES**

- Forest Service
- County

MAP SCALE 1:1,457,280

0 10 Miles

0 10 Kilometers

**TREE MORTALITY**  
(dead trees per acre)

- Less than 5
- 5 - 10
- 10 - 15
- 15 - 20
- 20 - 35
- More than 35

**TREE DAMAGE**

- not mortality

**MAJOR FIRES**

- 2019 - 2021

USGS, NGA, USA, CGIAR, Robinson, NCEAS, NLS, OS, NMA, Geodatasystemen and the GIS User Community

## Highlights

Estimated tree mortality decreased from ~14,000 dead trees across 3,000 acres in 2019 to an estimated 400 dead trees across 40 acres in 2021. Most of the mortality occurred in the eastern San Gabriel Mountains and was sparse in nature.

- White fir mortality decreased from approximately 6,300 dead trees across 1,700 acres in 2019 to approximately 70 dead trees across 15 acres in 2021.
- Jeffrey pine mortality also decreased from an estimated 2,500 dead trees across 850 acres in 2019 to ~90 scattered dead trees in 2021 recorded as single trees or small groups.
- Virtually no bigcone Douglas-fir mortality was detected in 2021, down from an estimated 860 dead trees across 560 acres in 2019 to a single dead bigcone Douglas-fir observed in 2021.
- Hardwood mortality decreased from an estimated 4,500 dead trees across 230 acres in 2019 to ~230 dead trees.