



Forest Service
U.S. DEPARTMENT OF AGRICULTURE

Southern Region | National Forests in North Carolina | R8 MB-161-I | January 2022

Nantahala and Pisgah National Forests



Final Environmental Impact Statement

for the
Land Management Plan

Appendix I: Map Series

Final Environmental Impact Statement - Nantahala and Pisgah National Forests Land Management Plan

In accordance with Federal civil rights law and U.S. Department of Agriculture (USDA) civil rights regulations and policies, the USDA, its Agencies, offices, and employees, and institutions participating in or administering USDA programs are prohibited from discriminating based on race, color, national origin, religion, sex, gender identity (including gender expression), sexual orientation, disability, age, marital status, family/parental status, income derived from a public assistance program, political beliefs, or reprisal or retaliation for prior civil rights activity, in any program or activity conducted or funded by USDA (not all bases apply to all programs). Remedies and complaint filing deadlines vary by program or incident.

Persons with disabilities who require alternative means of communication for program information (e.g., Braille, large print, audiotope, American Sign Language, etc.) should contact the responsible Agency or USDA's TARGET Center at (202) 720-2600 (voice and TTY) or contact USDA through the Federal Relay Service at (800) 877-8339. Additionally, program information may be made available in languages other than English.

To file a program discrimination complaint, complete the USDA Program Discrimination Complaint Form, AD-3027, found online at http://www.ascr.usda.gov/complaint_filing_cust.html and at any USDA office or write a letter addressed to USDA and provide in the letter all of the information requested in the form. To request a copy of the complaint form, call (866) 632-9992. Submit your completed form or letter to USDA by: (1) mail: U.S. Department of Agriculture, Office of the Assistant Secretary for Civil Rights, 1400 Independence Avenue, SW, Washington, D.C. 20250-9410; (2) fax: (202) 690-7442; or (3) email: program.intake@usda.gov.

USDA is an equal opportunity provider, employer and lender.

Front cover courtesy photo by Travis Bordley

**Final Environmental Impact Statement
Nantahala and Pisgah National Forests
Appendix I. Map Series**

Prepared By:

**Bart Matthews, Geospatial Systems Specialist
Holly Stratton, Forest GIS Coordinator (ret.)
Amber Vanderwolf, GIS Specialist
Eric Pullium, GIS Specialist**

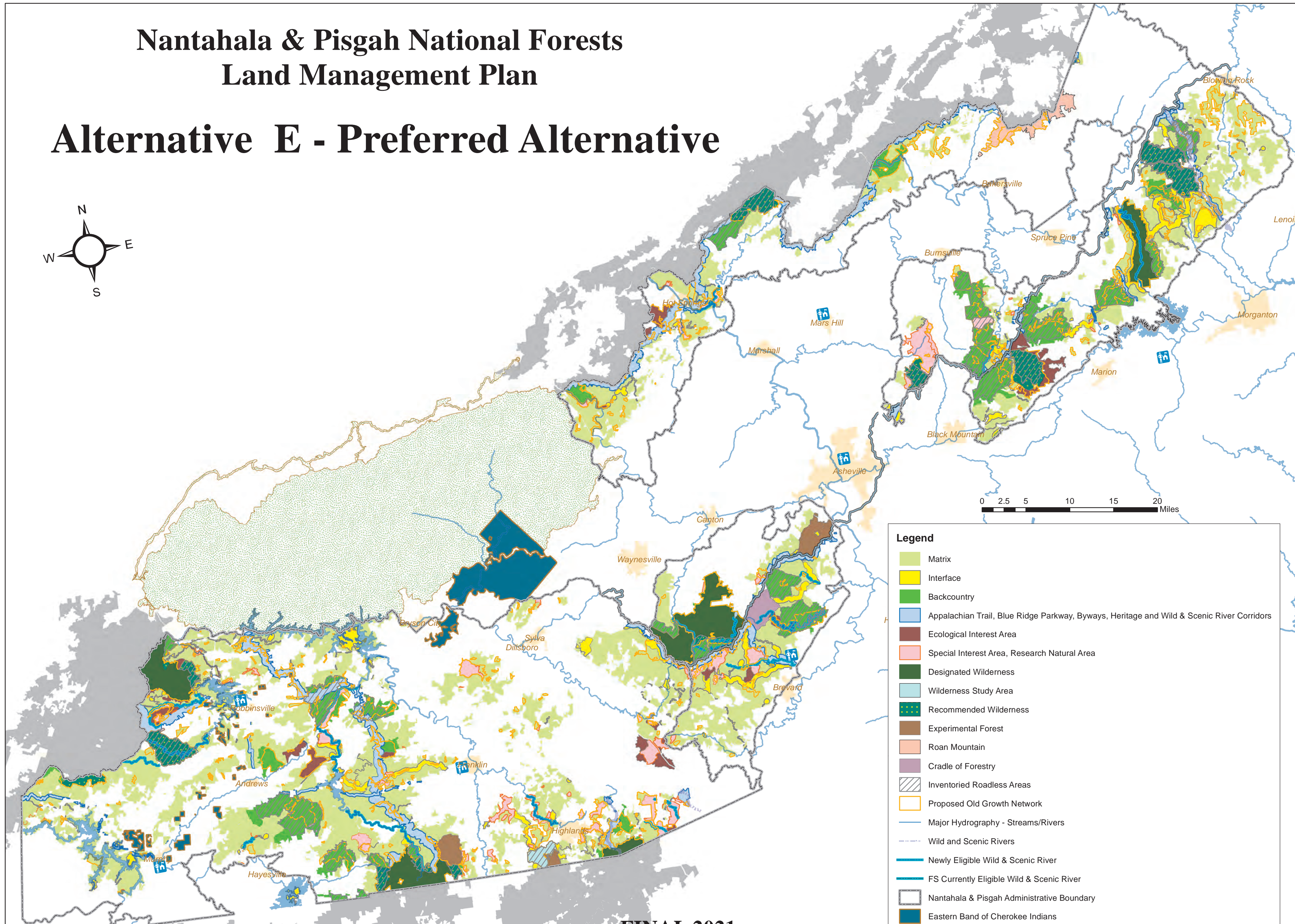
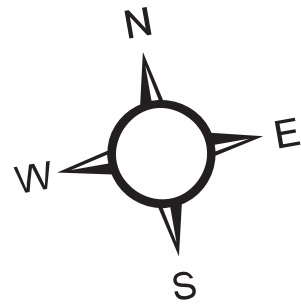
For Information Contact:

**Michelle Aldridge, Forest Planner National
Forests in North Carolina
160 Zillicoa Street Suite A
Asheville, NC 28801
(828) 257- 4200
www.fs.usda.gov/goto/nfsnc/nprevision**

This page left intentionally blank for formatting.

Nantahala & Pisgah National Forests Land Management Plan

Alternative E - Preferred Alternative



Legend

- Matrix
- Interface
- Backcountry
- Appalachian Trail, Blue Ridge Parkway, Byways, Heritage and Wild & Scenic River Corridors
- Ecological Interest Area
- Special Interest Area, Research Natural Area
- Designated Wilderness
- Wilderness Study Area
- Recommended Wilderness
- Experimental Forest
- Roan Mountain
- Cradle of Forestry
- Inventoried Roadless Areas
- Proposed Old Growth Network
- Major Hydrography - Streams/Rivers
- Wild and Scenic Rivers
- Newly Eligible Wild & Scenic River
- FS Currently Eligible Wild & Scenic River
- Nantahala & Pisgah Administrative Boundary
- Eastern Band of Cherokee Indians
- National Park Service
- US Forest Service Lands outside NC
- Forest Services Offices

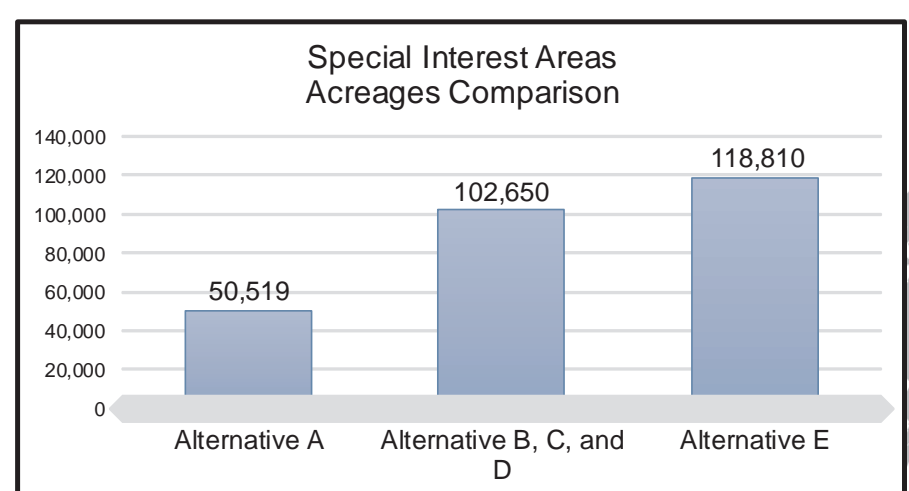
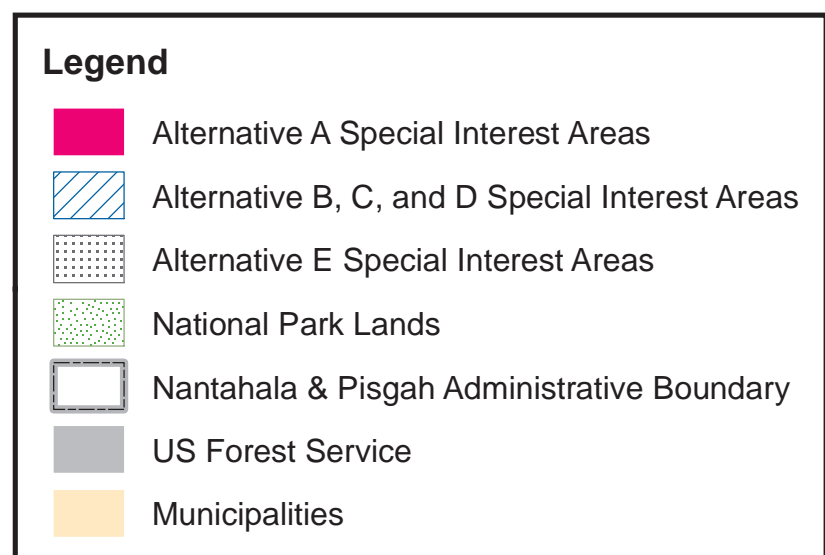
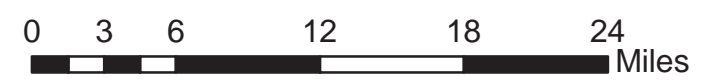
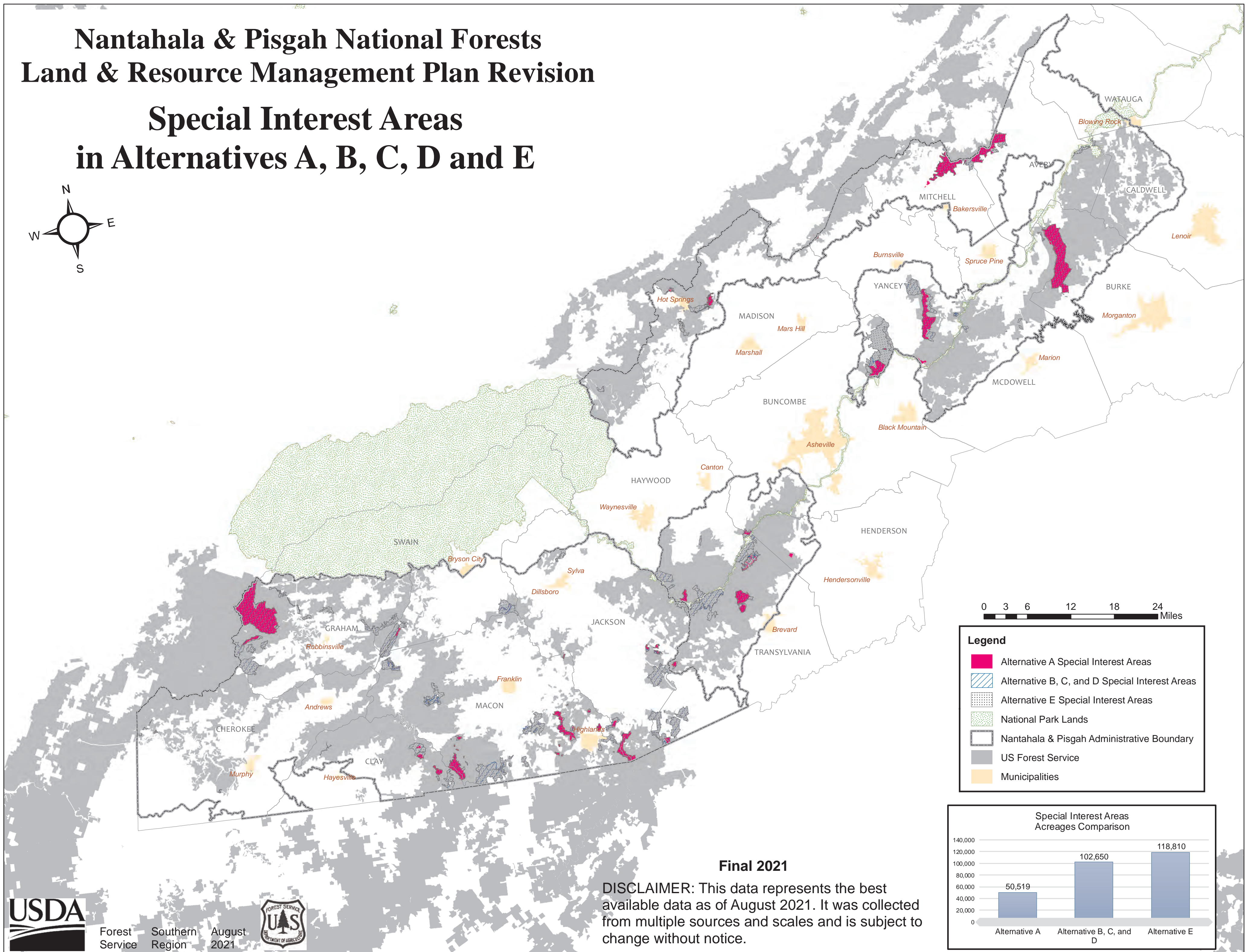
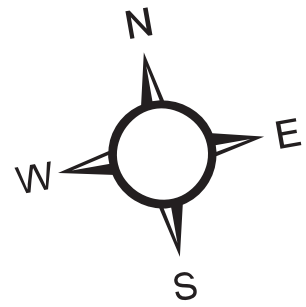


FINAL 2021

DISCLAIMER: This data represents the best available data as of August 2021. It was collected from multiple sources and scales and is subject to change without notice.

Nantahala & Pisgah National Forests Land & Resource Management Plan Revision

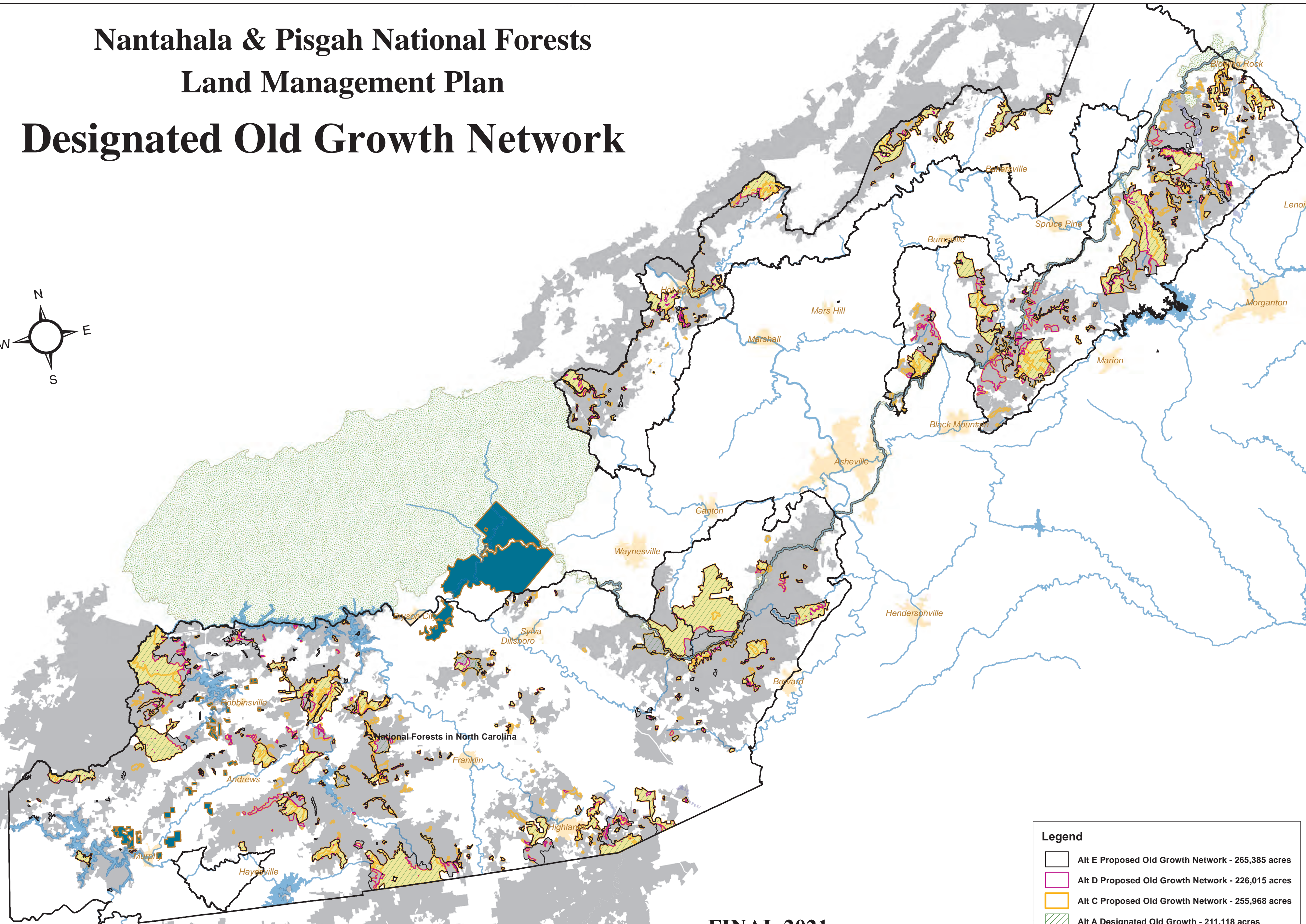
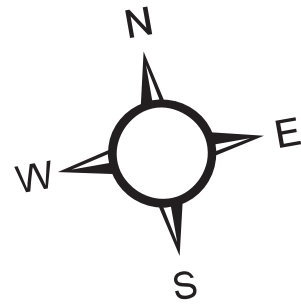
Special Interest Areas in Alternatives A, B, C, D and E



Final 2021

DISCLAIMER: This data represents the best available data as of August 2021. It was collected from multiple sources and scales and is subject to change without notice.

Nantahala & Pisgah National Forests Land Management Plan Designated Old Growth Network



Legend

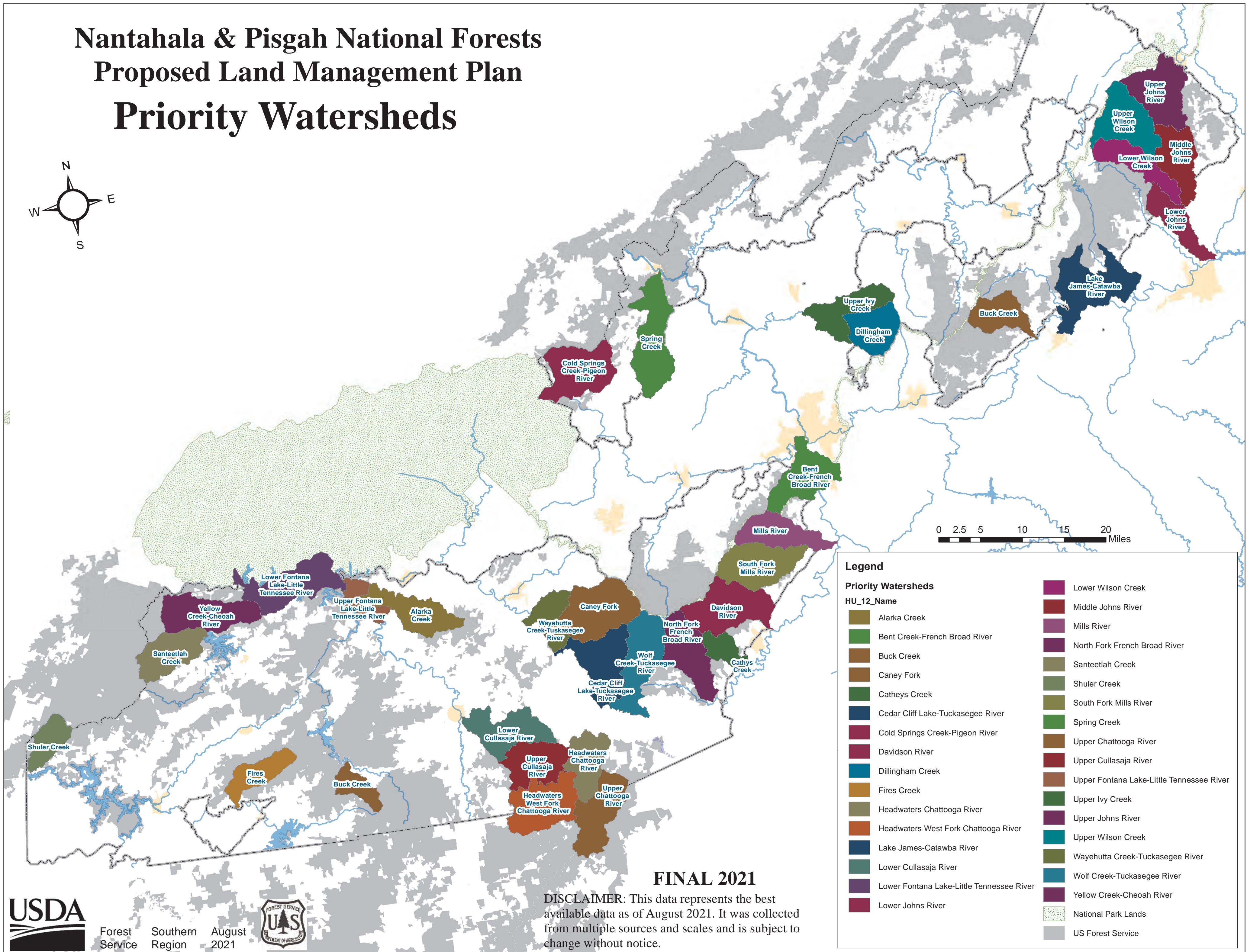
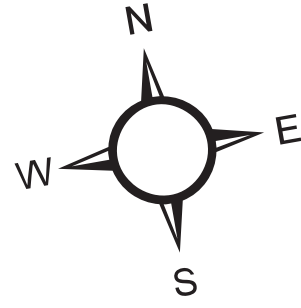
- Alt E Proposed Old Growth Network - 265,385 acres
- Alt D Proposed Old Growth Network - 226,015 acres
- Alt C Proposed Old Growth Network - 255,968 acres
- Alt A Designated Old Growth - 211,118 acres
- Alt B Proposed Old Growth Network - 202,524 acres
- Eastern Band of Cherokee Indians
- National Park Lands
- US Forest Service

FINAL 2021

DISCLAIMER: This data represents the best available data as of August 2021. It was collected from multiple sources and scales and is subject to change without notice.



Nantahala & Pisgah National Forests Proposed Land Management Plan Priority Watersheds



0 2.5 5 10 15 20 Miles

Legend

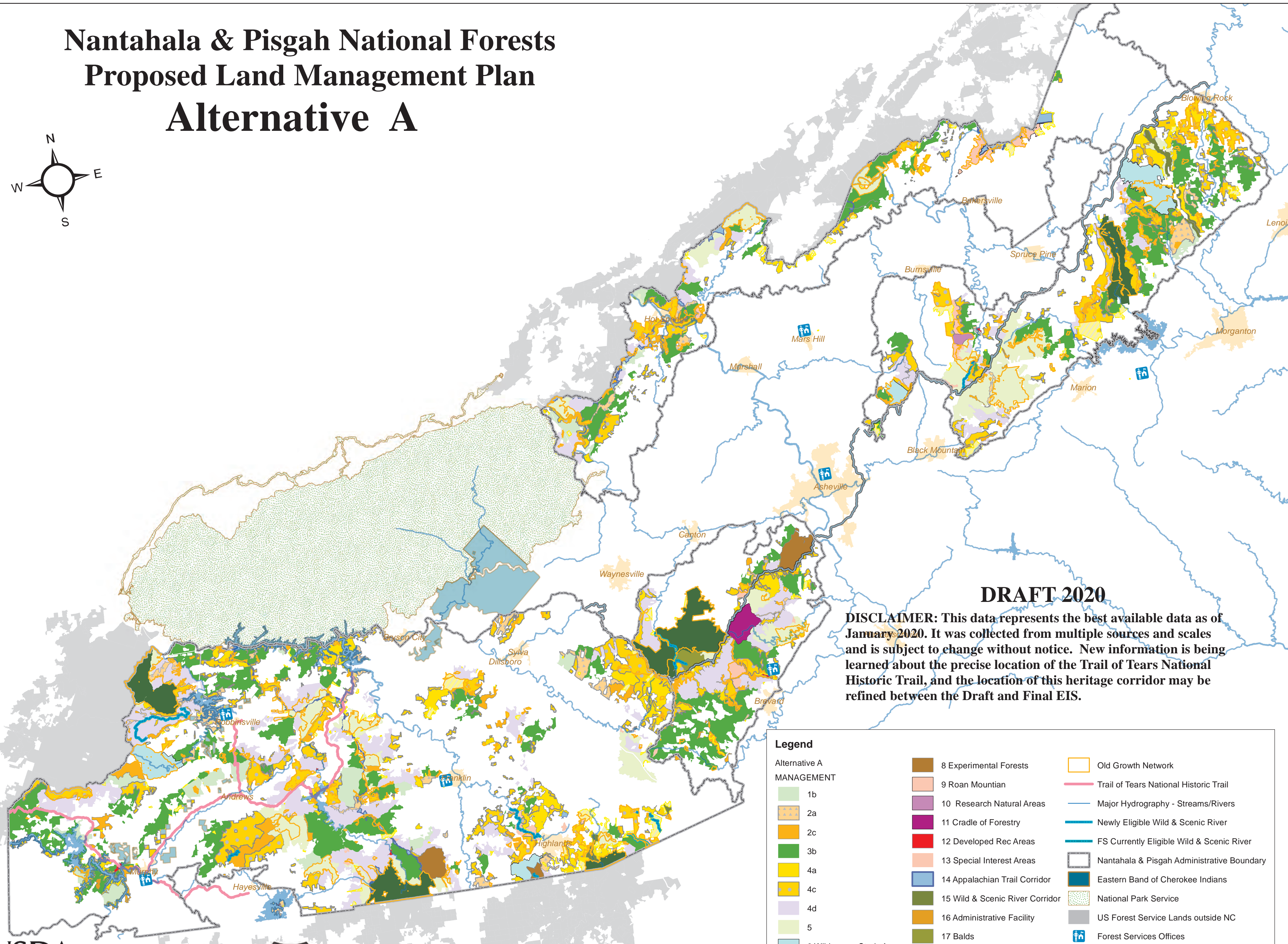
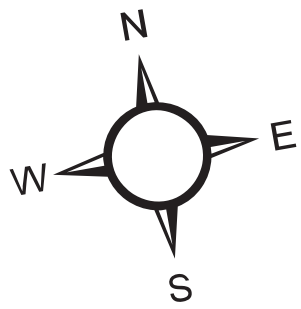
Priority Watersheds

Color	HU_12_Name
Light Green	Alarka Creek
Dark Green	Bent Creek-French Broad River
Brown	Buck Creek
Dark Brown	Caney Fork
Light Green	Catheys Creek
Dark Blue	Cedar Cliff Lake-Tuckasegee River
Dark Red	Cold Springs Creek-Pigeon River
Dark Red	Davidson River
Dark Blue	Dillingham Creek
Light Green	Fires Creek
Light Green	Headwaters Chattooga River
Dark Red	Headwaters West Fork Chattooga River
Dark Blue	Lake James-Catawba River
Dark Green	Lower Cullasaja River
Dark Purple	Lower Fontana Lake-Little Tennessee River
Dark Red	Lower Johns River
Dark Purple	Lower Wilson Creek
Dark Red	Middle Johns River
Dark Purple	Mills River
Dark Purple	North Fork French Broad River
Light Green	Santeetlah Creek
Light Green	Shuler Creek
Light Green	South Fork Mills River
Dark Green	Spring Creek
Dark Brown	Upper Chattooga River
Dark Red	Upper Cullasaja River
Dark Brown	Upper Fontana Lake-Little Tennessee River
Dark Green	Upper Ivy Creek
Dark Purple	Upper Johns River
Dark Blue	Upper Wilson Creek
Light Green	Wayhutta Creek-Tuckasegee River
Dark Blue	Wolf Creek-Tuckasegee River
Dark Purple	Yellow Creek-Cheoah River
Dotted Pattern	National Park Lands
Grey	US Forest Service

FINAL 2021

DISCLAIMER: This data represents the best available data as of August 2021. It was collected from multiple sources and scales and is subject to change without notice.

Nantahala & Pisgah National Forests Proposed Land Management Plan Alternative A



DRAFT 2020

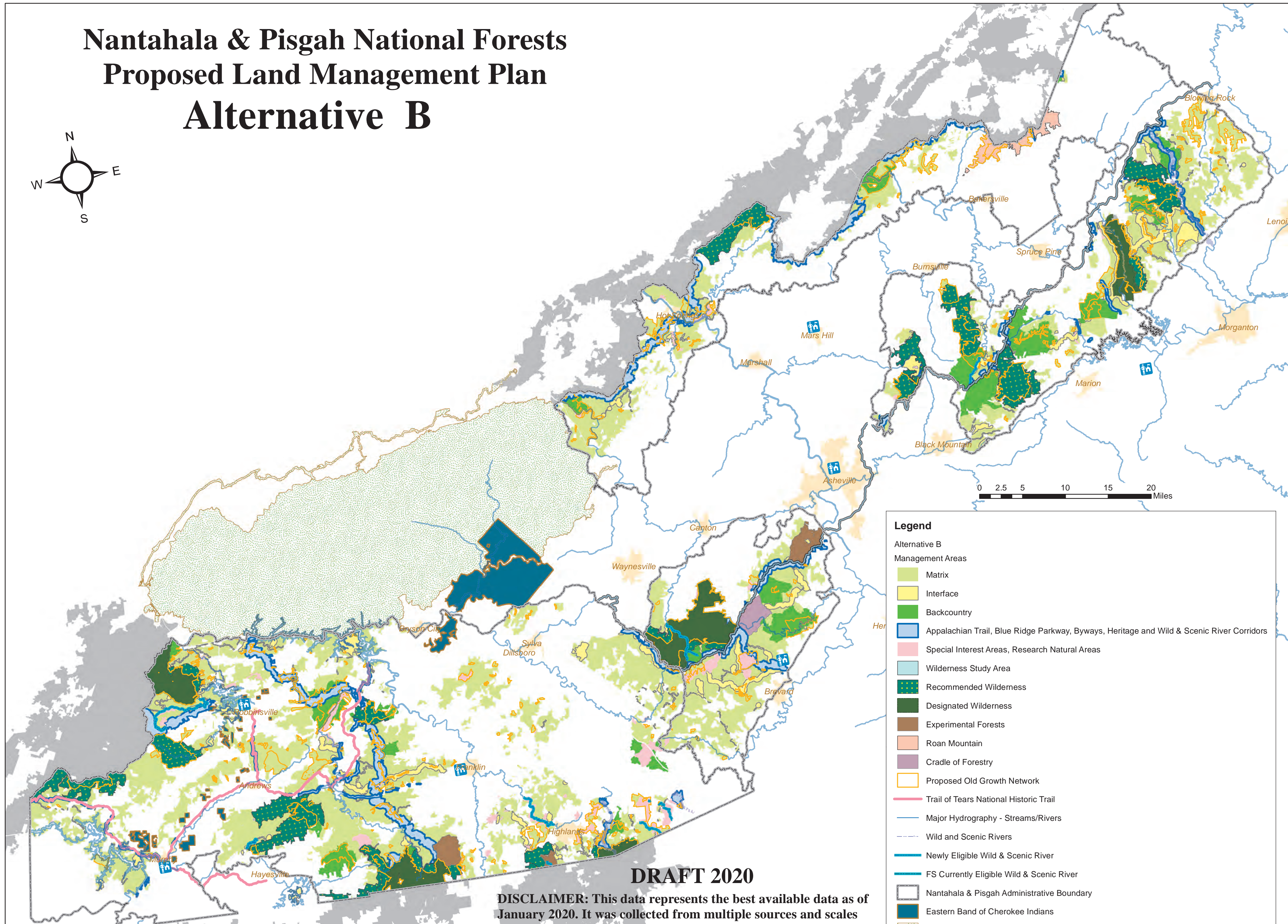
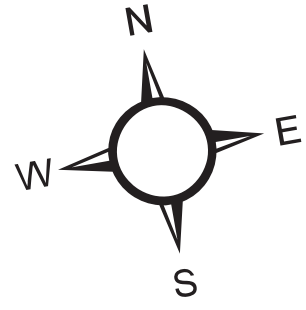
DISCLAIMER: This data represents the best available data as of January 2020. It was collected from multiple sources and scales and is subject to change without notice. New information is being learned about the precise location of the Trail of Tears National Historic Trail, and the location of this heritage corridor may be refined between the Draft and Final EIS.

Legend

Alternative A MANAGEMENT	8 Experimental Forests	Old Growth Network
1b	9 Roan Mountain	Trail of Tears National Historic Trail
2a	10 Research Natural Areas	Major Hydrography - Streams/Rivers
2c	11 Cradle of Forestry	Newly Eligible Wild & Scenic River
3b	12 Developed Rec Areas	FS Currently Eligible Wild & Scenic River
4a	13 Special Interest Areas	Nantahala & Pisgah Administrative Boundary
4c	14 Appalachian Trail Corridor	Eastern Band of Cherokee Indians
4d	15 Wild & Scenic River Corridor	National Park Service
5	16 Administrative Facility	US Forest Service Lands outside NC
6 Wilderness Study Areas	17 Balds	Forest Services Offices
7 Designated Wilderness	18 Riparian areas	
	Unassigned New Acquisitions	



Nantahala & Pisgah National Forests Proposed Land Management Plan Alternative B



Legend

Alternative B

Management Areas

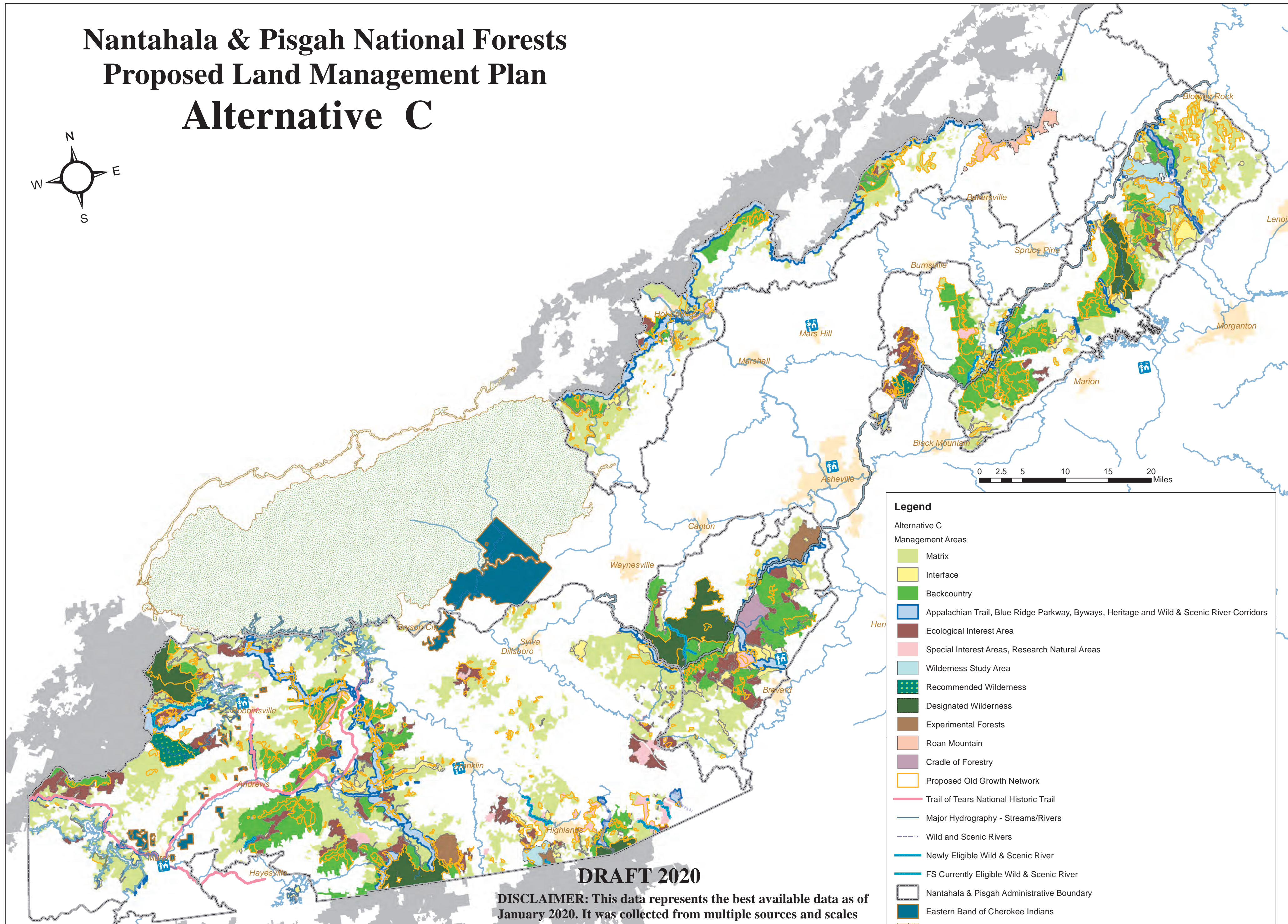
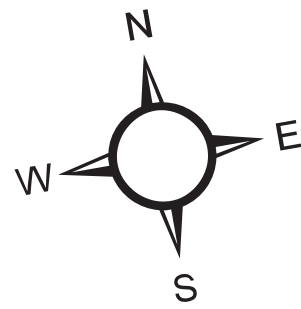
- Matrix
- Interface
- Backcountry
- Appalachian Trail, Blue Ridge Parkway, Byways, Heritage and Wild & Scenic River Corridors
- Special Interest Areas, Research Natural Areas
- Wilderness Study Area
- Recommended Wilderness
- Designated Wilderness
- Experimental Forests
- Roan Mountain
- Cradle of Forestry
- Proposed Old Growth Network
- Trail of Tears National Historic Trail
- Major Hydrography - Streams/Rivers
- Wild and Scenic Rivers
- Newly Eligible Wild & Scenic River
- FS Currently Eligible Wild & Scenic River
- Nantahala & Pisgah Administrative Boundary
- Eastern Band of Cherokee Indians
- National Park Service
- US Forest Service Lands outside NC
- Forest Services Offices

DRAFT 2020

DISCLAIMER: This data represents the best available data as of January 2020. It was collected from multiple sources and scales and is subject to change without notice. New information is being learned about the precise location of the Trail of Tears National Historic Trail, and the location of this heritage corridor may be refined between the Draft and Final EIS.



Nantahala & Pisgah National Forests Proposed Land Management Plan Alternative C



Legend

Alternative C Management Areas

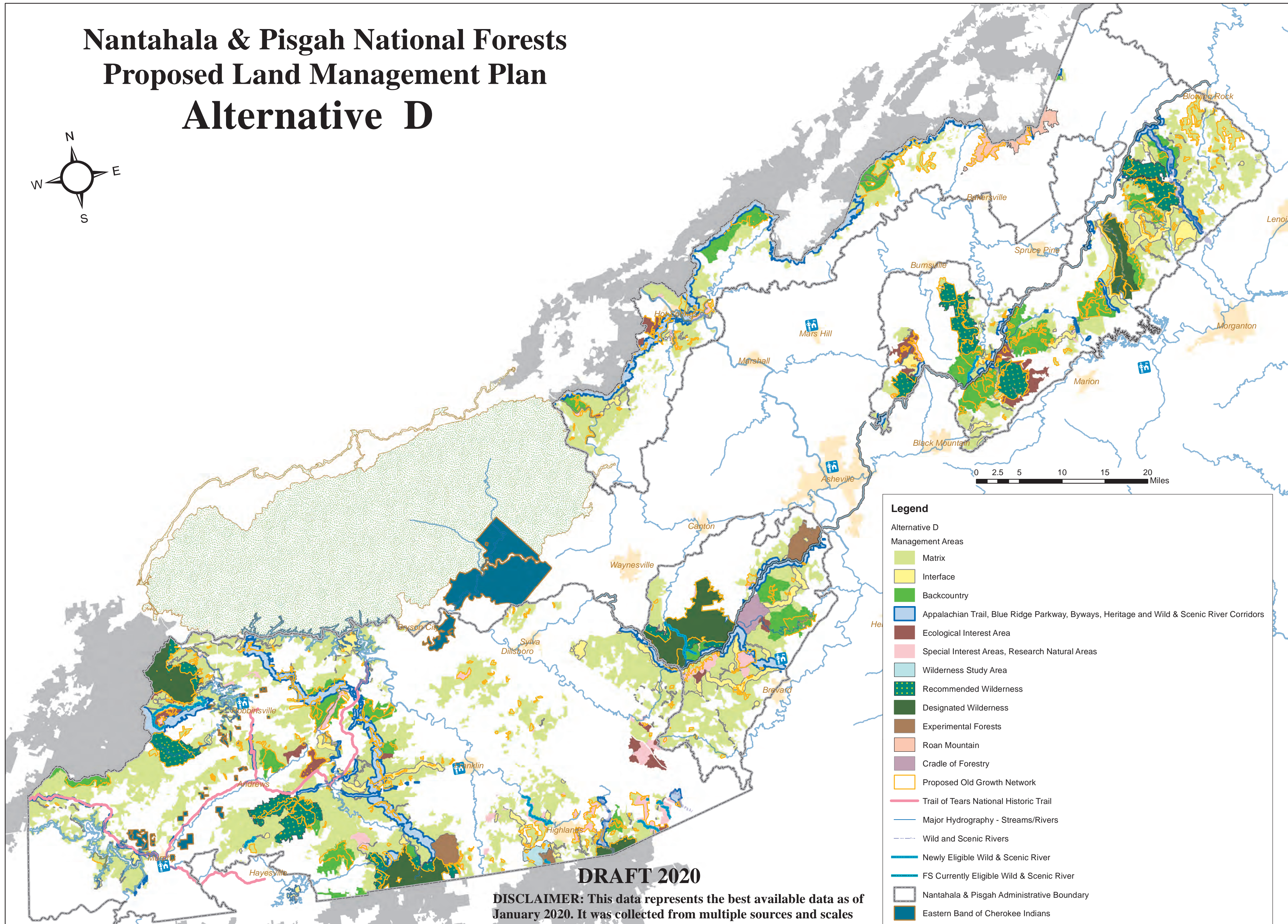
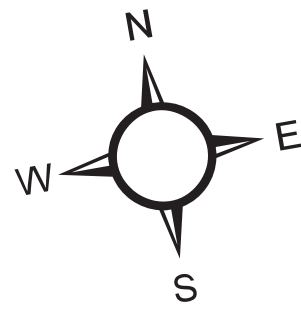
- Matrix
- Interface
- Backcountry
- Appalachian Trail, Blue Ridge Parkway, Byways, Heritage and Wild & Scenic River Corridors
- Ecological Interest Area
- Special Interest Areas, Research Natural Areas
- Wilderness Study Area
- Recommended Wilderness
- Designated Wilderness
- Experimental Forests
- Roan Mountain
- Cradle of Forestry
- Proposed Old Growth Network
- Trail of Tears National Historic Trail
- Major Hydrography - Streams/Rivers
- Wild and Scenic Rivers
- Newly Eligible Wild & Scenic River
- FS Currently Eligible Wild & Scenic River
- Nantahala & Pisgah Administrative Boundary
- Eastern Band of Cherokee Indians
- National Park Service
- US Forest Service Lands outside NC
- Forest Services Offices

DRAFT 2020

DISCLAIMER: This data represents the best available data as of January 2020. It was collected from multiple sources and scales and is subject to change without notice. New information is being learned about the precise location of the Trail of Tears National Historic Trail, and the location of this heritage corridor may be refined between the Draft and Final EIS.



Nantahala & Pisgah National Forests Proposed Land Management Plan Alternative D



Legend

Alternative D

Management Areas

- Matrix
- Interface
- Backcountry
- Appalachian Trail, Blue Ridge Parkway, Byways, Heritage and Wild & Scenic River Corridors
- Ecological Interest Area
- Special Interest Areas, Research Natural Areas
- Wilderness Study Area
- Recommended Wilderness
- Designated Wilderness
- Experimental Forests
- Roan Mountain
- Cradle of Forestry
- Proposed Old Growth Network
- Trail of Tears National Historic Trail
- Major Hydrography - Streams/Rivers
- Wild and Scenic Rivers
- Newly Eligible Wild & Scenic River
- FS Currently Eligible Wild & Scenic River
- Nantahala & Pisgah Administrative Boundary
- Eastern Band of Cherokee Indians
- National Park Service
- US Forest Service Lands outside NC
- Forest Services Offices

DRAFT 2020

DISCLAIMER: This data represents the best available data as of January 2020. It was collected from multiple sources and scales and is subject to change without notice. New information is being learned about the precise location of the Trail of Tears National Historic Trail, and the location of this heritage corridor may be refined between the Draft and Final EIS.

