

Bryophytes of El Yunque National Forest, Puerto Rico

Amelia Merced & Tamara Heartsill-Scalley
 USDA Forest Service, International Institute of Tropical Forestry



Photos by Jerry Bauer, Amelia Merced. Format by The Field Museum. 2021. International Institute of Tropical Forestry, San Juan, PR 00926 [ameliamerced@gmail.com] This publication was made possible by the Forest Health Program of the USDA Forest Service. With support from the University of Puerto Rico- Río Piedras Biology Department Herbarium (UPRRP).
 USDA is an equal opportunity provider, employer, and lender.



Bryophytes are small plants that include hornworts, liverworts and mosses.

Las briofitas son plantas pequeñas que incluyen los antocerotes, hepáticas y musgos.



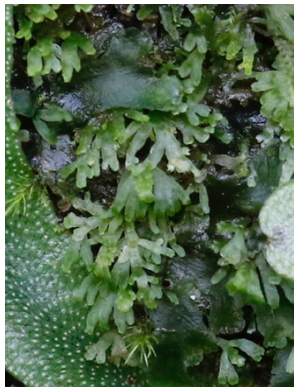
Nothoceros vincentianus
 Dendrocerotaceae



Phaeoceros carolinianus
 Notothyladaceae



Aneura pinguis
 Aneuraceae



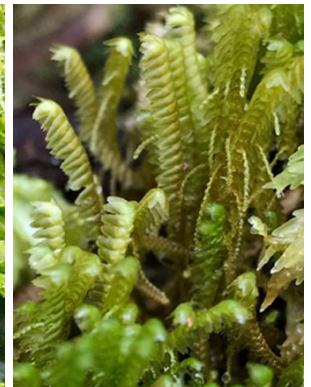
Riccardia
 Aneuraceae



Fossombronia
 Fossombroniaceae



Lejeunea cerina
 Lejeuneaceae



Bazzania hookeri
 Lepidoziaceae



Lophocolea
 Lophocoleaceae



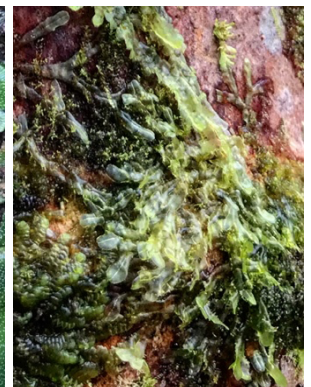
Monoclea gottschei
 Monocleaceae



Dumortiera hirsuta
 Marchantiaceae



Marchantia chenopoda
 Marchantiaceae



Metzgeria
 Metzgeriaceae



Pallavicinia lyellii
 Pallaviciniaceae



Plagiochila
 Plagiochilaceae



Radula paganii
 Radulaceae



Scapania portoricensis
 Scapaniaceae



Trichocolea
 Trichocoleaceae

Bryophytes of El Yunque National Forest, Puerto Rico

Amelia Merced & Tamara Heartsill-Scalley
 USDA Forest Service, International Institute of Tropical Forestry



Photos by Jerry Bauer, Amelia Merced. Format by The Field Museum, 2021. International Institute of Tropical Forestry, San Juan, PR 00926 [ameliamerced@gmail.com] This publication was made possible by the Forest Health Program of the USDA Forest Service. With support from the University of Puerto Rico- Río Piedras Biology Department Herbarium (UPRRP).

USDA is an equal opportunity provider, employer, and lender.



Breutelia
Bartramiaceae



Philonotis
Bartramiaceae



Bryum
Bryaceae



Leucoloma serrulatum
Dicranaceae



Fissidens polypodioides
Fissidentaceae



Leucobryum martianum
Leucobryaceae



Epipterygium orbifolium
Mniaceae



Neckeroopsis undulata
Neckeraceae



Octoblepharum albidum
Octoblepharaceae



Groutiella apiculata
Orthotrichaceae



Hemiragis aurea
Pilotrichaceae



Callicostella
Pilotrichaceae



Pogonatum tortile
Polytrichaceae



Hyophiladelphus agrarius
Pottiaceae



Phyllogonium viride
Phyllogoniaceae



Pyrrhobryum spiniforme
Rhizogoniaceae



Acroporium pungens
Sematophyllaceae



Sematophyllum
Sematophyllaceae



Sphagnum portoricense
Sphagnaceae



Thuidium urceolatum
Thuidiaceae