

# US FOREST SERVICE STAFF

- Chris Dowling – Swan Lake District Ranger
- Shelli Mavor – Interdisciplinary Team Leader  
([Michele.Mavor@usda.gov](mailto:Michele.Mavor@usda.gov))
- Darlene Bridges – Recreation Specialist
- Mark Ruby – Wildlife Biologist
- Beth Gardner – Fisheries Biologist
- Mike West – Forest Partnership Coordinator
- Tami Mackenzie – Forest Public Affairs Specialist



# CORY DAVIS BACKGROUND AND ROLE

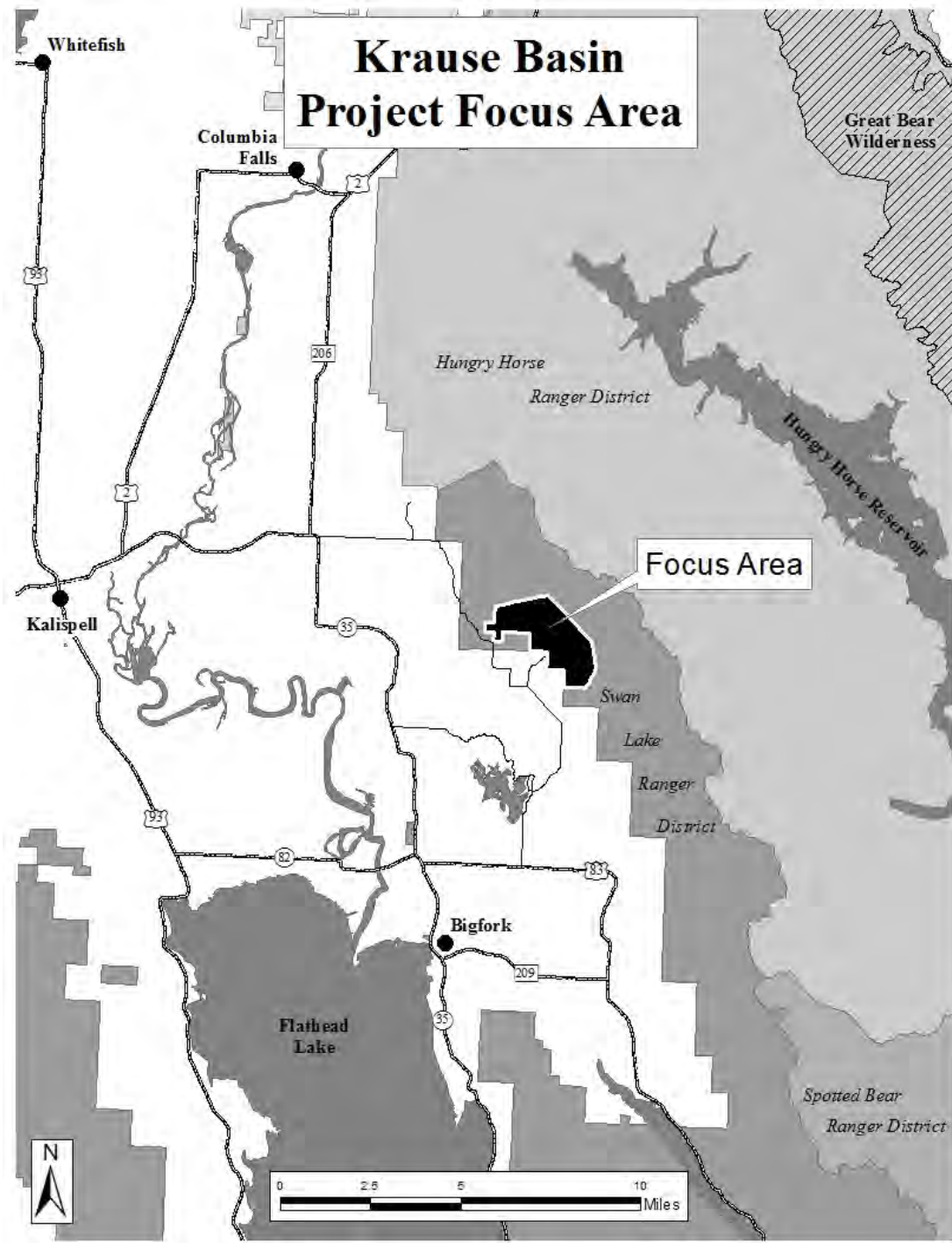
- Science Communication Specialist, Northern Rockies Fire Science Network ([nrfirescience.org](http://nrfirescience.org))
- Former Coordinator for Southwestern Crown Collaborative ([swcrown.org](http://swcrown.org))
  - *Research Associate, UM Franke College of Forestry and Conservation*
- 25+ years working as a Researcher and Biologist in natural resources and land management
- President Flathead Audubon Society

## Role:

- 3<sup>rd</sup> Party Facilitator
- No Decision Authority

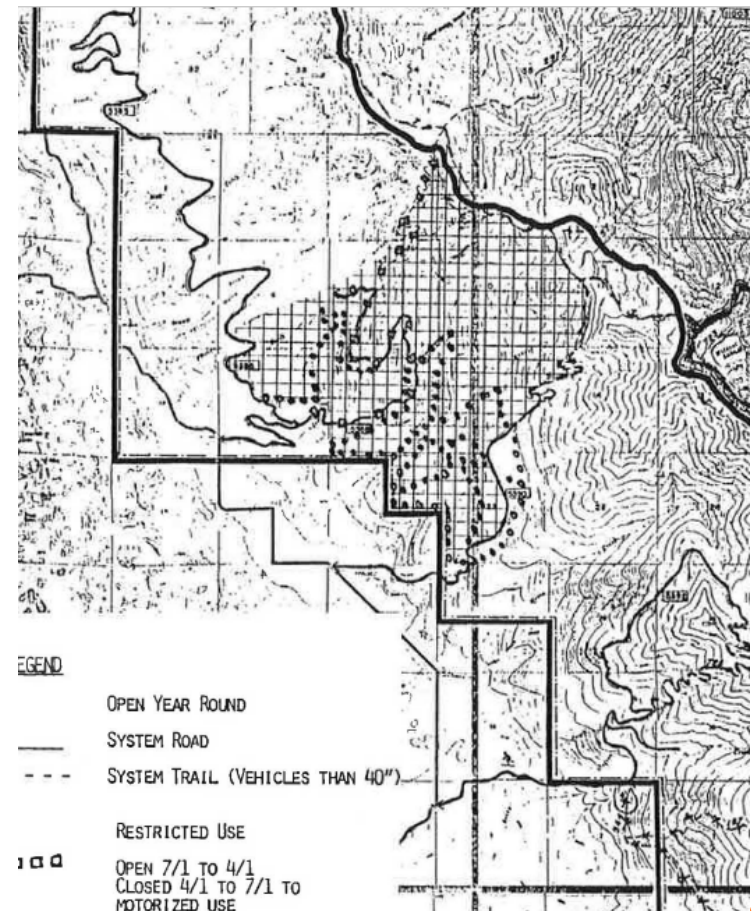
Email: [Facilitator4KB@gmail.com](mailto:Facilitator4KB@gmail.com)





# BACKGROUND TO KRAUSE BASIN COLLABORATION

- 1988 Noisy Face Decision
  - Provided direction for roads, trails, occasional events and area closures
  - Specifically, for 13 miles of motorized trails in Krause Basin
    - Non-system
    - Not marked on the ground
    - Open to motorized use July 2 – September 1
    - Monitoring would be used to determine success of this direction



# BACKGROUND TO KRAUSE BASIN COLLABORATION

## 2005 Travel Management Rule

- Motorized Vehicle Use Maps (MVUM) which define routes where public motorized access can legally occur
- 13 miles of Krause Basin trails shown as system trails on district MVUM map in 2010.
- Ongoing management – unauthorized trails and access difficult to manage or enforce



# BACKGROUND TO KRAUSE BASIN COLLABORATION

## Flathead Forest Plan Revision

- Designated the Krause Basin Area Management Area 7 – Focused Recreation
- Areas near communities deliberately chosen to have focused recreational growth
- Desired conditions for a signed, well-managed trail system



# BACKGROUND TO KRAUSE BASIN COLLABORATION

## Forest Plan Revision Objections

- Concerns raised:
  - Designation of the area should not be for focused recreation
  - Trails should not be signed or motorized
  - Low intensity vegetation management
  
- Regional Forester's brokered resolution:
  - Work in partnership with neighbors and interested parties
  - Develop effective management of these routes including installing route markers, discouraging unauthorized use and addressing adverse resource impacts





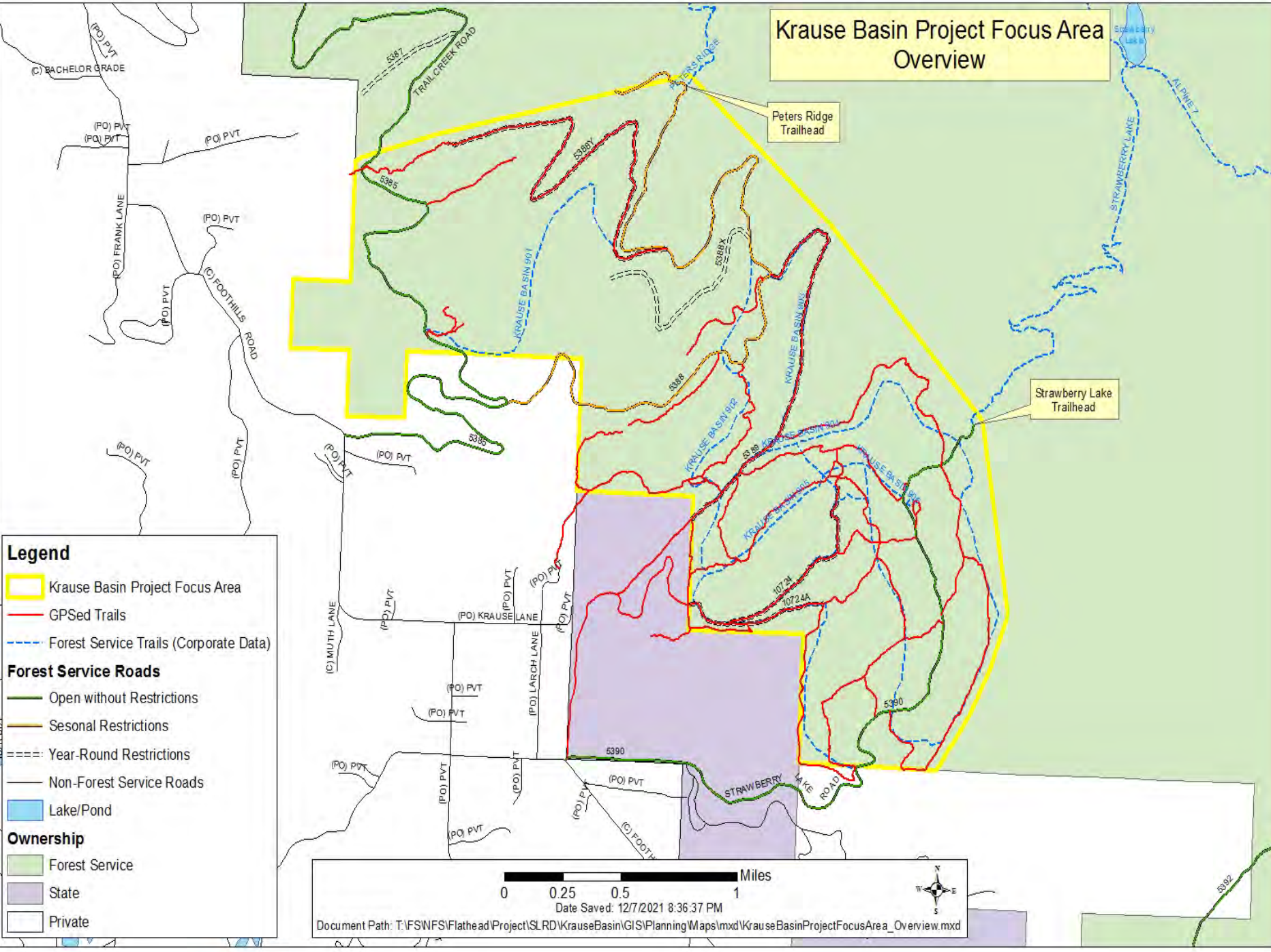
# PROBLEMS TO SOLVE

- Trail designation (Non-snow covered periods)
  - Evaluate all existing trails
  - Minimize new ground disturbance (reroutes/improvements OK to reduce damage)
  - Which trails for which use (motorized, non-motorized)
  - Trail signage: route markers, “Open to”
  - Rehab non-designated, user-created trails
- Trailhead(s) assessment
  - Location
  - Signage, maps, etc.
  - Parking
  - Improvements based on anticipated use (toilets?)
  - Strawberry Lake Trailhead considerations





# Krause Basin Project Focus Area Overview



**Legend**

- Krause Basin Project Focus Area
- GPSed Trails
- Forest Service Trails (Corporate Data)

**Forest Service Roads**

- Open without Restrictions
- Seasonal Restrictions
- Year-Round Restrictions
- Non-Forest Service Roads

**Ownership**

- Forest Service
- State
- Private

Miles  
 0    0.25    0.5    1

Date Saved: 12/7/2021 8:36:37 PM

Document Path: T:\FS\NFS\Flathead\Project\SLRD\KrauseBasin\GIS\Planning Maps\mxd\Krause Basin Project Focus Area\_Overview.mxd



## WHAT WE ARE NOT ADDRESSING

- Management area designation (MA7 – Focused Recreation)

Forest Plan: “This focused recreation area reflects natural conditions with some development in the form of trailhead, trail markers and trail signing.”

- Vegetation management: other than as it directly relates to the trail system (weeds, improvements)



## SIDEBOARDS

- FNF Forest Plan (2018)
  - Amendment possible for season of use
- Regulations/Mitigations (distance to streams, road widths, etc.)
- Effects on wildlife, water quality, vegetation, soils, etc.





# WHAT MIGHT FINAL PRODUCT LOOK LIKE?

- Document with list of recommendations on issues described earlier
- May contain multiple alternatives
- Prioritization of work to be done
- Could include ideas for related items



# TIMELINE (FLEXIBLE)

Series of issue driven meetings and field trips

- 1: Introduction to Process (**Today**)
- 2: Trail designation 1 (**mid-February**)
- 3: Trail designation 2 (**early April**)
- 4: Trail designation field trip (**late May**)
- 5: Trail signage (**July**)
- 6: Trailhead assessment field trip (**August**)
- 7: Final Recommendations meeting (**Sept**)

Provide recommendations to USFS **October 1, 2022**



# Once recommendations provided to the USFS, then what?

## USFS Planning Process

- Refine Recommendations to create Alternatives
- Scope the General Public
- Environmental Effects Analysis
- Entire process may take up to two years for a final decision.

After Decision...

TIME FOR THE FUN PART.....

Implementation!!!!

