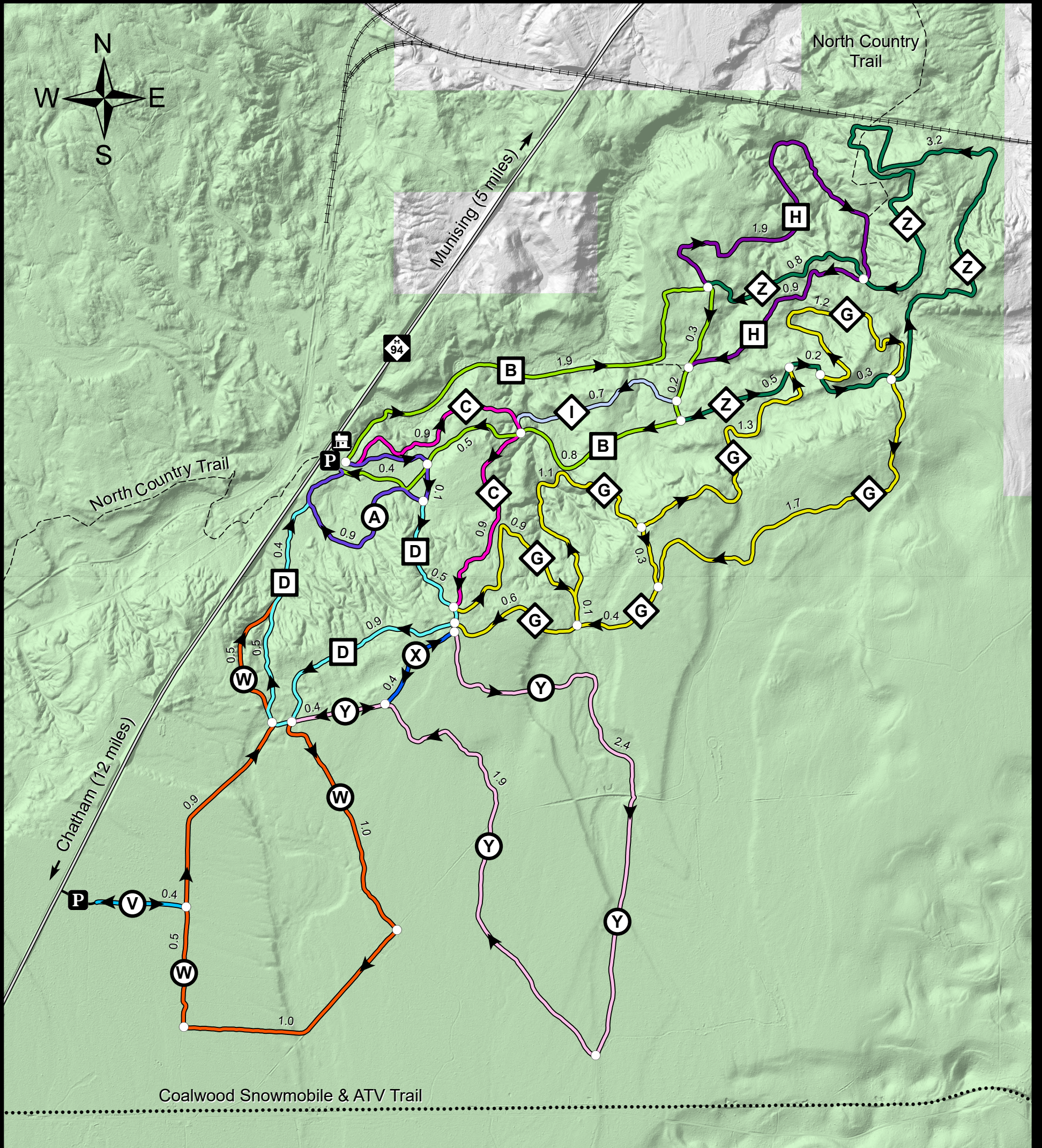




Hiawatha National Forest Valley Spur Cross Country Ski Trails



- | | |
|------------------------|------------------------|
| A Loop 1.4 km (0.9 mi) | I Loop 0.7 km (0.5 mi) |
| B Loop 4.1 km (2.5 mi) | V Loop 0.4 km (0.2 mi) |
| C Loop 1.8 km (1.1 mi) | W Loop 3.9 km (2.4 mi) |
| D Loop 2.5 km (1.5 mi) | X Loop 0.4 km (0.3 mi) |
| G Loop 7.6 km (4.7 mi) | Y Loop 4.7 km (2.9 mi) |
| H Loop 2.8 km (1.7 mi) | Z Loop 5.0 km (3.1 mi) |

Difficulty Level

- Easy
- Moderate
- Most Difficult
- Trail Map Location
- Railroad
- Hiawatha National Forest Land

Download This Map In Avenza!

All trails are open to classic and skate skiing.
Please follow trail direction indicated on the map.
Distances shown on the map are in kilometers.

