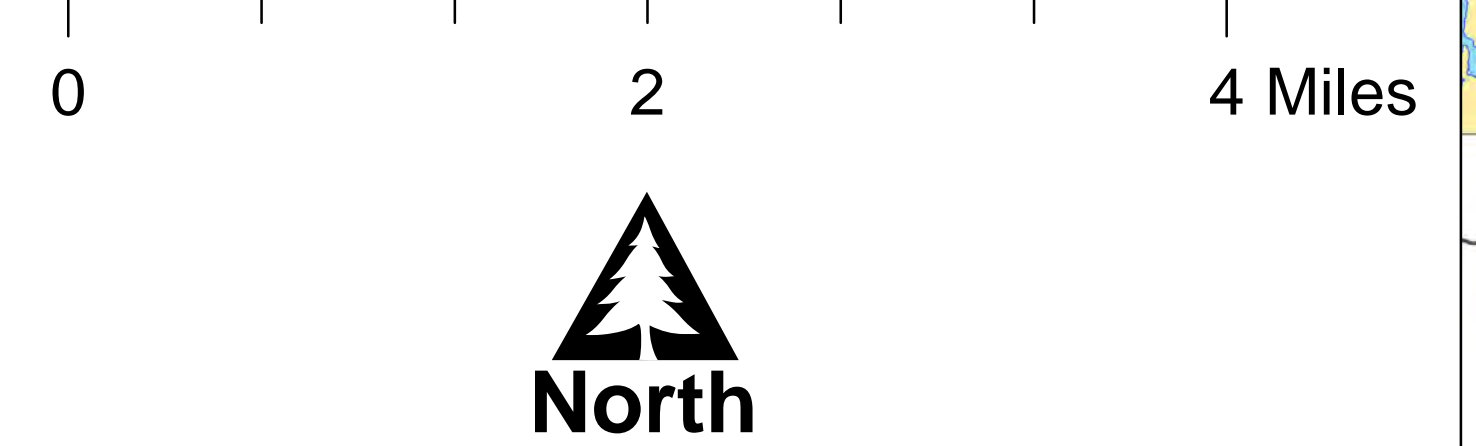
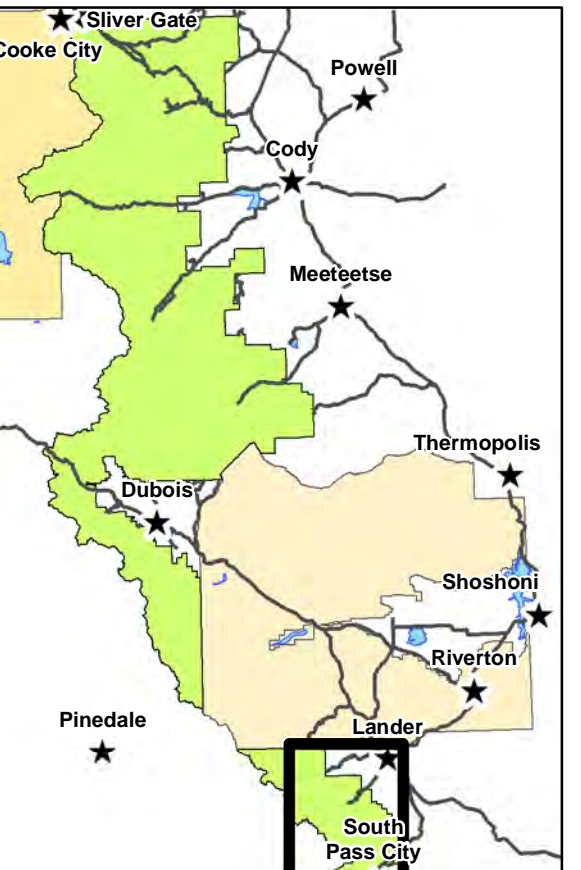


**Shoshone National Forest**  
**Washakie Ranger District**  
**Travel Management**  
**SubPart C**  
**Alternative 4**  
**Changes to Motorized Travel**

- Groomed Class 1 OSV Trail
- Ungroomed Class 1 OSV Trail
- Class 2 OSV Trail
- Proposed Motorized Area Closure
- Cross Country Ski Trails
- NFSR Open to Highway Legal Vehicles in Winter
- NFST Open in Winter
- Open Other Public Road in Winter
- Crucial Winter Range Exemption Areas
- Winter Over Snow Motor Use Allowed
- Non Forest Service Lands
- Clarks Fork Wild River
- Shoshone NF Lands



**Locator Map**



The USDA Forest Service makes no warranty, expressed or implied, as to the accuracy, reliability, or completeness of the geospatial data displayed on this map. The original data, compiled to meet project objectives, was current at the time of analysis and may come from various sources. Lands, roads and trails within the boundaries of the National Forest may be subject to restrictions on motor vehicle use. Obtain a Motor Vehicle Use Map, or inquire at the local Forest Service Office for current motor vehicle access information. This map is for planning purposes only.