



# Resurrection Pass North Trail

Seward Ranger District, Chugach National Forest  
(907) 288-3178

## Recommended Uses



## Difficulty

Easy (summer)  
More difficult (winter)

## Public Use

Moderate

## Length (one way)

21.7 miles (Devil's CR TR)

## USGS Map

Seward C8, D8

## Trip Time (one way)

2-4 days

## Recommended Season

Year round

## Elevation Gain

2200 feet

## Trail Access

Mile 15 of Hope Hwy, turn south onto Resurrection Creek Road. Travel 4 miles to trailhead. The last mile to the trailhead is not plowed in winter. *Winter motorized use is allowed December 1 – April 30 when December is an odd year. When December is an even year motorized use is not allowed except for qualified subsistence users. Trail is closed to saddle/pack stock from April 1-June 30.*

## Trail Grade/Condition

Level path, and some steep grades with switchbacks. Well maintained, may be muddy in places. Heavy snow in Resurrection Pass into early June. Downed trees can impede travel year round.

## Recreational Opportunities

Popular for hiking, mountain biking, cross-country skiing, and snowmobiling. Caribou Creek, Fox Creek, East Creek, Devil's Pass Cabins (7, 11.5, 14.5, 21.7 miles from trailhead, by reservation only) and designated campsites for multi-day trips. Recreational gold panning in designated areas.

Spectacular scenery. Spruce/aspen forests at lower elevations grading into alpine tundra with wildflowers. The first 15 miles hikers pass through reddish-gray, dead trees killed by spruce bark beetle. These trees are a major fire hazard. A 38.4-mile hike is possible by hiking the entire trail, or take the Devil's Creek Trail (see trail information sheet for Devil's CR TR) 10 miles to the Seward Hwy for a 31.7 mile hike.

Wildlife includes moose, black and brown bears, caribou, wolves, marmot, Dall sheep, mountain goats, ptarmigan, and grouse. Hunting for these species is permitted in designated seasons. [Review Alaska Department of Fish and Game \(ADF&G\) hunting and fishing regulations.](#)

## Special Considerations

First 5 miles of trail may be icy in winter. Travel by snowmobile may be difficult due to narrow trail entering and exiting all drainages on the trail between Caribou and East Creek. Trail is difficult to follow from East Creek to Resurrection Pass during/after heavy snowfall. The trail crosses 2 major avalanche chutes at mile 9.6 and 10. Travel on the first 4 miles of the southern trail is not recommended in winter due to steep side hills and generally icy trail conditions. In winter the southern trail access is via either the Bean Creek trail or the West Juneau road, see Resurrection Pass South Trail sheet for directions.

Use caution with bear and moose. Giardia (a microscopic parasite that can infect warm-blooded animals and humans) could be present in all open water sources, filter surface water before drinking. Winter travel may be hazardous due to avalanches, thin lake ice, and white out conditions above tree line. Winter travelers need to be able to evaluate avalanche and over-ice travel hazards. Be prepared for rapid weather changes. Remember to pack out your trash. You can contact a U.S. Forest Service office to receive more detailed information on safety precautions and Leave No Trace outdoor skills and ethics.

## Cabin Reservations

Occupancy of Forest Service cabins is by permit only. Reservations may be made up to 180 days in advance by calling 1-877-444-6777 or via the Internet at [www.recreation.gov](http://www.recreation.gov).

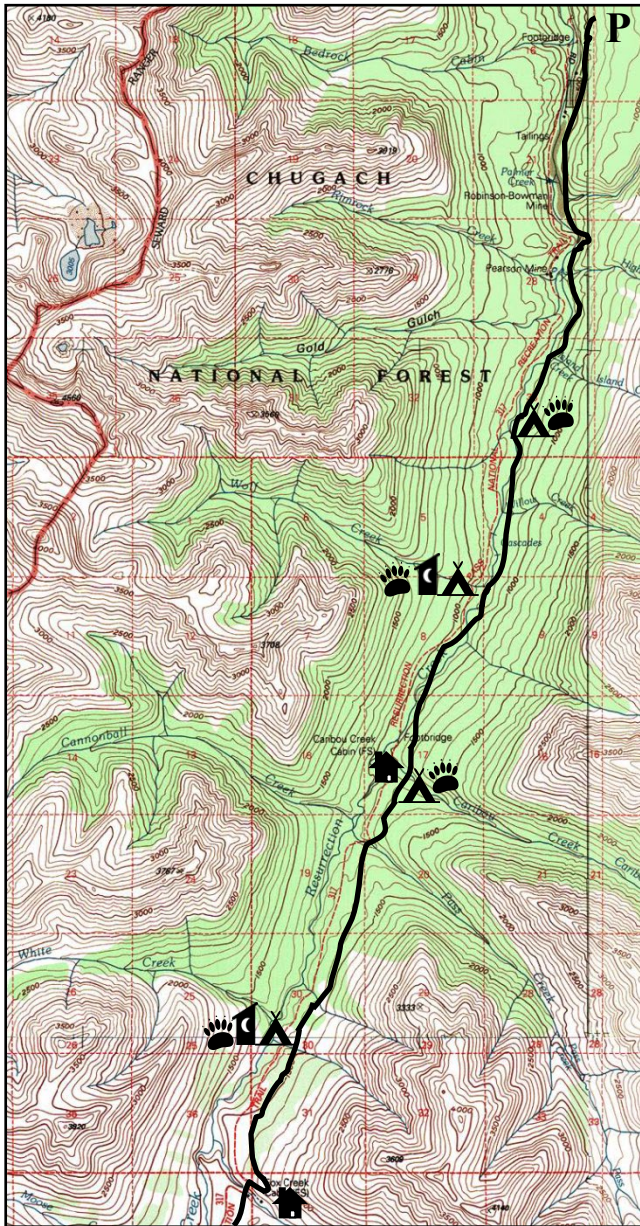
10/2021



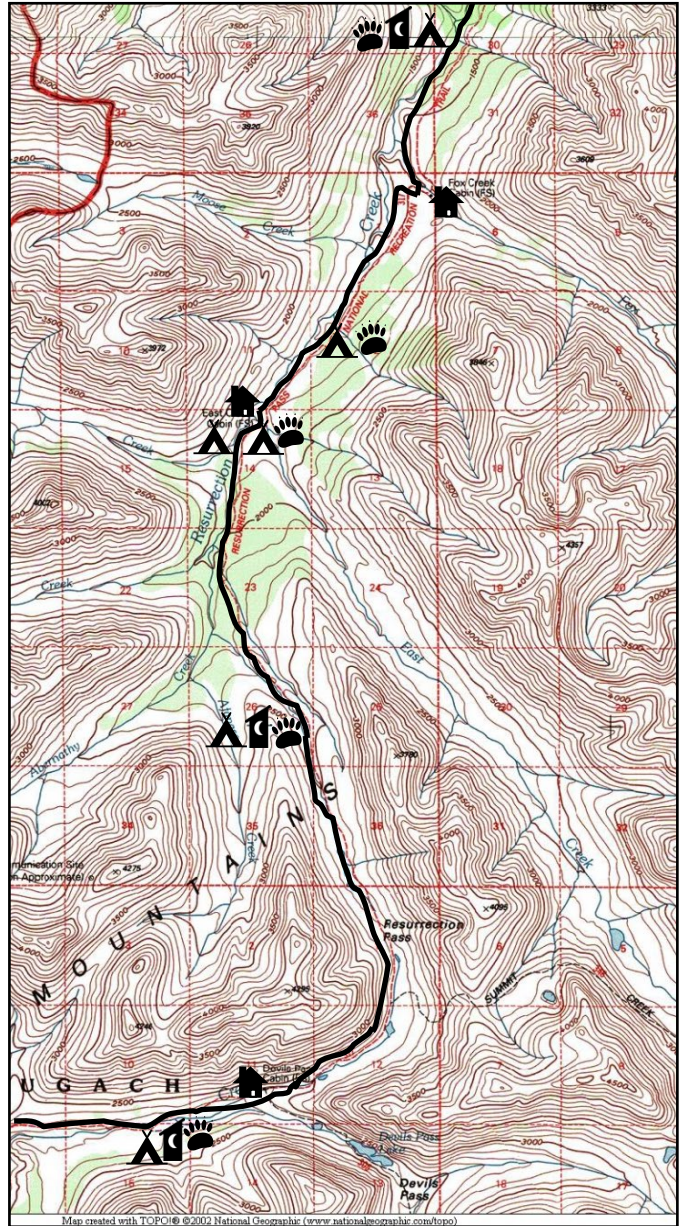
# Resurrection Pass Trail

## NORTH SIDE

North Map



Seward Ranger District, Chugach National Forest (907) 288-3178



Maps not to scale

Continue south on map right







 **Designated Campsites**  
From North to South

 **Cabins**

- Mile 4.06** N 60° 49' 8.7" W 149° 38' 45"
- Mile 5.26** N 60° 48' 10.9" W 149° 39' 12.4"
- Mile 7.14** N 60° 46' 58.9" W 149° 40' 35"
- Mile 9.71** N 60° 45' 13.8" W 149° 41' 42.4"
- Mile 12.6** N 60° 43' 21.1" W 149° 43' 26.5"
- Mile 14.6** N 60° 42' 09" W 149° 45' 08.3"
- Mile 16.6** N 60° 40' 35" W 149° 45' 27"

- Caribou Creek Mile 7.1**  
N 60° 47' 01.2" W 149° 40' 41.4"
- Fox Creek Mile 11.7**  
N 60° 43' 47.6" W 149° 42' 33.4"
- East Creek Mile 14.5**  
N 60° 42' 12" W 149° 45' 09"
- Devils Pass Mile 21.5**  
N 60° 37' 17.5" W 149° 45' 7.9"

### LEGEND

-  Resurrection Pass Trail
-  Trailhead Parking
-  Forest Service Cabin
-  Designated Campsite
-  Bear Box (food storage)
-  Backcountry Toilet