



Forest Order No. 03-21-14

USDA Forest Service
Eldorado National Forest
Emergency Forest Closure

Pursuant to 16 U.S.C. § 551 and 36 C.F.R. § 261.50(a) and (b), and to provide for public safety, the following acts are prohibited on National Forest System lands within the Eldorado National Forest (as shown on Exhibit A). This Order is effective from August 17 2021, through September 30, 2021.

1. Going into or being upon National Forest System lands. 36 C.F.R. § 261.52(e).
2. Being on a National Forest System road. 36 C.F.R. § 261.54(e).
3. Being on a National Forest System trail. 36 C.F.R. § 261.55(a).

Pursuant to 36 C.F.R. § 261.50(e), the following persons are exempt from this Order:

1. Persons with Forest Service Permit No. FS-7700-48 (Permit for Use of Roads, Trails, or Areas Restricted by Regulation or Order), specifically exempting them from this Order.
2. Any Federal, State, or local officer, or member of an organized rescue or fire fighting force in the performance of an official duty.

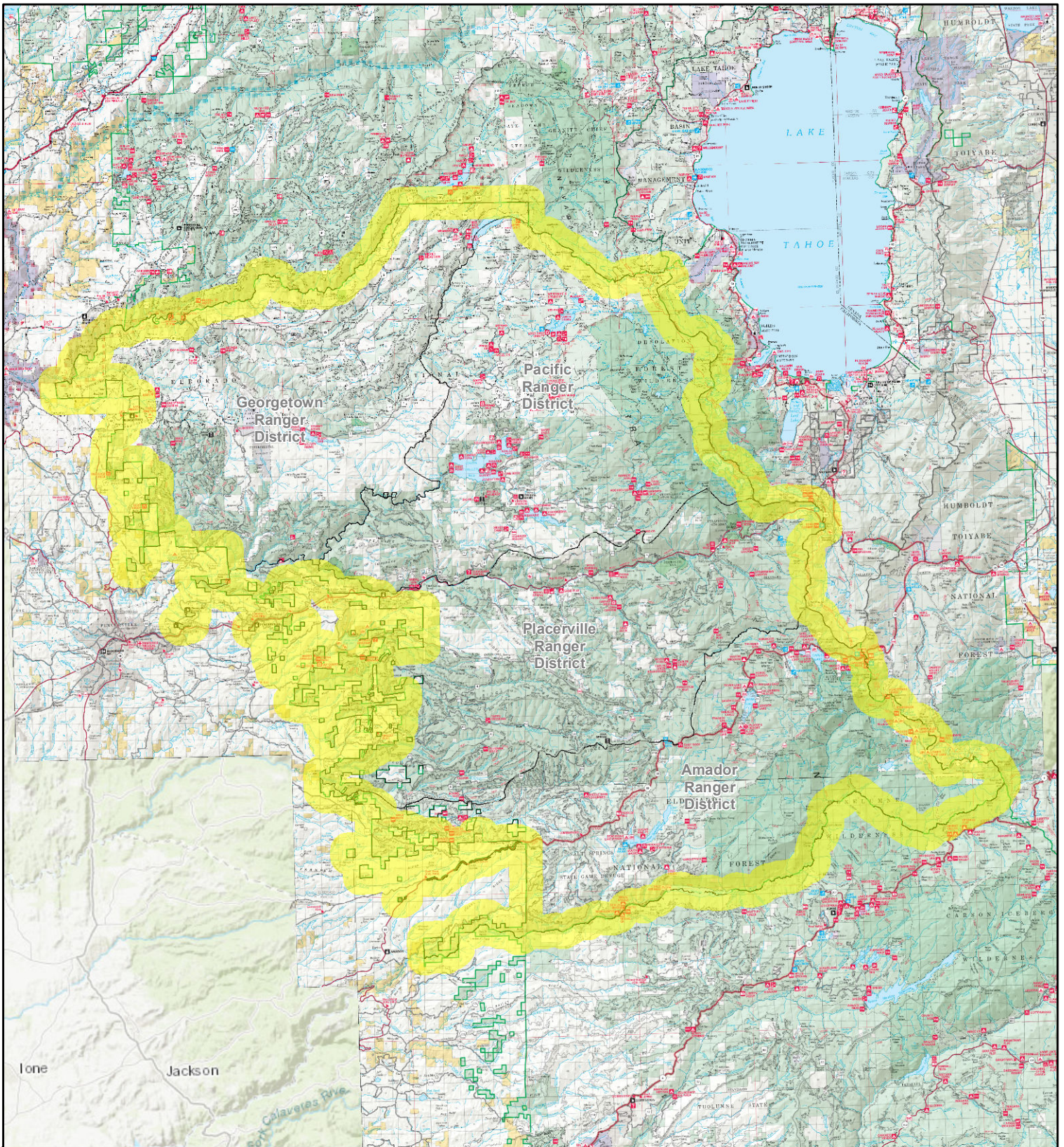
These prohibitions are in addition to the general prohibitions in 36 C.F.R. Part 261, Subpart A.

A violation of these prohibitions is punishable by a fine of not more than \$5000 for an individual or \$10,000 for an organization, or imprisonment for not more than 6 months, or both. 16 U.S.C. § 551 and 18 U.S.C. §§ 3559, 3571, and 3581.

Executed in Placerville, California, this 17th day of August, 2021.

JEFF MARSOLAIS

Forest Supervisor
Eldorado National Forest



**Order No. 03-21-14
Eldorado National Forest
Caldor Fire
Forest Wide Closure**



**Closure Area - National
Forest System Lands, Roads
and Trails, Recreation Sites**

