



**Stanislaus National Forest**  
**Forest Order No. STF-16-2021-06**  
**Fire Restrictions (Moderate Fire Hazard Area)**



Pursuant to 16 U.S.C. § 551 and 36 C.F.R. § 261.50(a), and to provide for public safety and protect natural resources, the following acts are prohibited within the Moderate Fire Hazard Area of the Stanislaus National Forest, as shown on Exhibit A and described in Exhibit B. This Order is effective from June 24, 2021, through December 31, 2021.

1. Building, maintaining, attending or using a fire, campfire, or stove fire, except in the Developed Recreation Sites listed in Exhibit C. 36 C.F.R. § 261.52(a).
2. Smoking, except within an enclosed vehicle or building, within a Developed Recreation Site listed in Exhibit C, or while stopped in an area at least three feet in diameter that is barren or cleared of all flammable material. 36 C.F.R. § 261.52(d).
3. Welding, or operating an acetylene or other torch with an open flame. 36 C.F.R. § 261.52(i).

Pursuant to 36 C.F.R. § 261.50(e), the following persons are exempt from this Order:

1. Persons with Forest Service Permit No. FS-7700-48 (Permit for Use of Roads, Trails, or Areas Restricted by Regulation or Order), specifically exempting them from this Order.
2. Persons with a valid California Campfire Permit are not exempt from the prohibitions listed above. However, persons with a valid California Campfire Permit may use a portable stove or lantern using gas, jellied petroleum, or pressurized liquid fuel within the Moderate Fire Hazard Area.
3. Any Federal, State, or local officer, or member of an organized rescue or fire fighting force in the performance of an official duty.

These prohibitions are in addition to the general prohibitions in 36 C.F.R. Part 261, Subpart A.

A violation of these prohibitions is punishable by a fine of not more than \$5,000.00 for an individual or \$10,000.00 for an organization, or imprisonment for not more than six months, or both. 16 U.S.C. § 551 and 18 U.S.C. §§ 3559, 3571 and 3581.

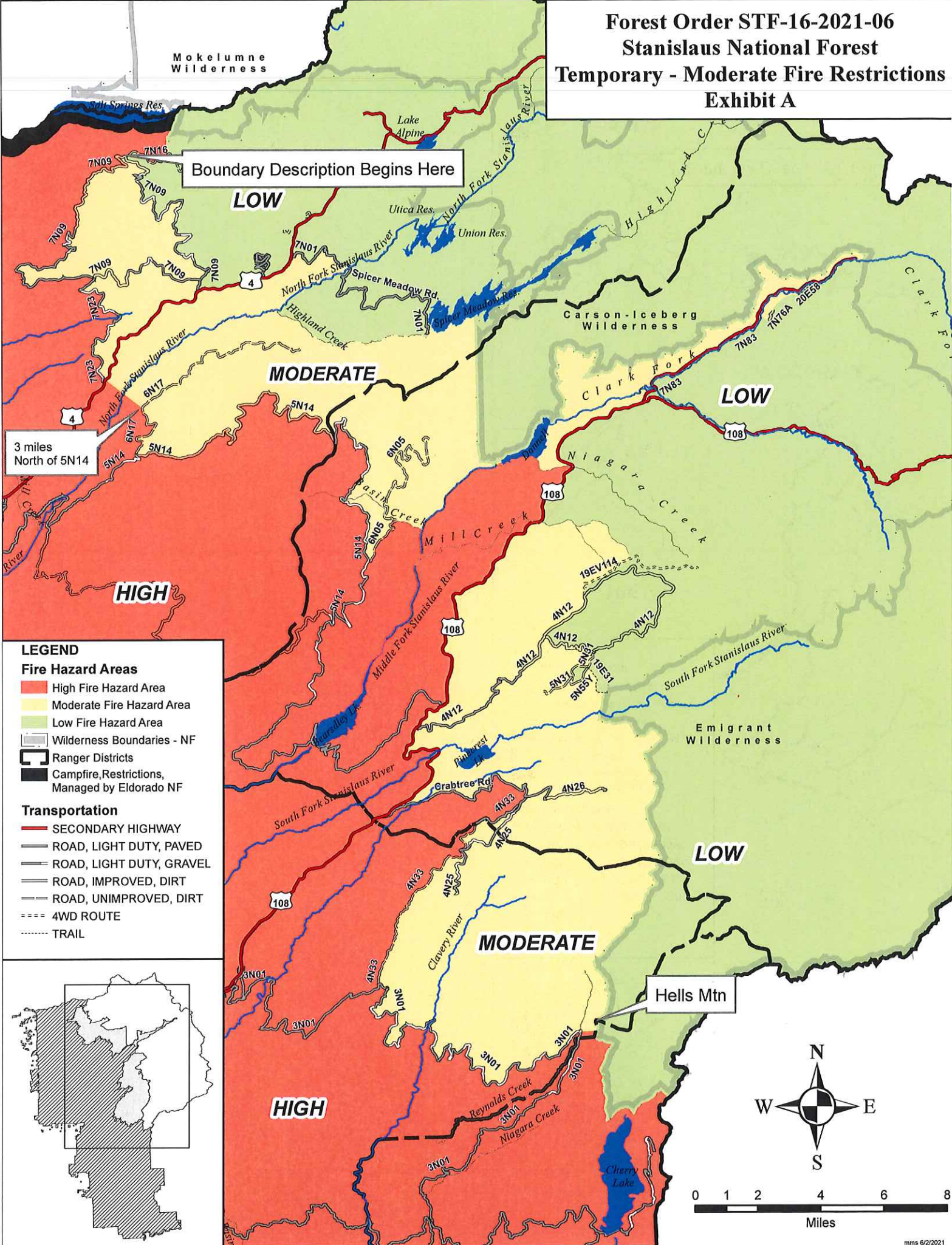
Executed in Sonora, California, this 23rd day of June, 2021.

---

Jason Kuiken  
Forest Supervisor  
Stanislaus National Forest



**Forest Order STF-16-2021-06**  
**Stanislaus National Forest**  
**Temporary - Moderate Fire Restrictions**  
**Exhibit A**



Boundary Description Begins Here

3 miles North of 5N14

Hells Mtn

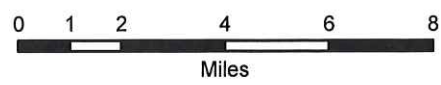
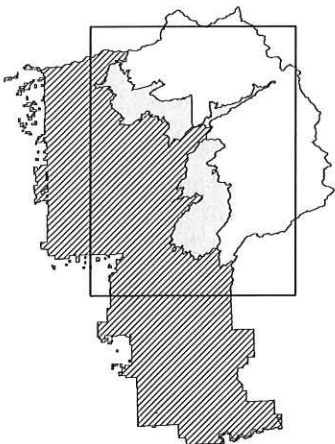
**LEGEND**

**Fire Hazard Areas**

- High Fire Hazard Area
- Moderate Fire Hazard Area
- Low Fire Hazard Area
- Wilderness Boundaries - NF
- Ranger Districts
- Campfire, Restrictions, Managed by Eldorado NF

**Transportation**

- SECONDARY HIGHWAY
- ROAD, LIGHT DUTY, PAVED
- ROAD, LIGHT DUTY, GRAVEL
- ROAD, IMPROVED, DIRT
- ROAD, UNIMPROVED, DIRT
- 4WD ROUTE
- TRAIL



**Stanislaus National Forest**  
**Forest Order No. STF-16-2021-06**  
**Fire Restrictions – Moderate Fire Hazard Area**  
**Exhibit B**

The Stanislaus National Forest Moderate Fire Hazard Area boundary begins at the junction of Forest Road No. 7N16 and Forest Road No. 7N09 then continues 10 miles southeast along Forest Road No. 7N09 to its intersection with Highway 4, then continues 3 miles east along Highway 4 to its intersection with Forest Road No. 7N01 (Spicer Meadow Road), then continues 3 miles south along Forest Road No. 7N01 (Spicer Meadow Road) to its intersection with the North Fork Stanislaus River, then continues 3 miles west along the North Fork Stanislaus River to its intersection with Highland Creek, then continues 6 miles southeast along Highland Creek to Spicer Meadow Reservoir, then continues 2 miles east along the south shore of Spicer Meadow Reservoir to its intersection with the Carson Iceberg Wilderness boundary, then continues 22 miles south and then northeast along the Carson Iceberg Wilderness boundary to its intersection with the Clark Fork River, then continues 2 miles west along the Clark Fork River to its intersection with Forest Road No. 20E58, then continues 1.5 miles west along Forest Road No. 20E58 to its intersection with Forest Road No. 7N76A , then continues 0.5 miles southwest along Forest Road No. 7N76A to the end of the road, then continues 0.3 miles due west to the Clark Fork River, then continues 4 miles west along the Clark Fork River to its intersection with Forest Road No. 7N83, then continues 1 mile south along Forest Road No. 7N83 to its intersection with Highway 108, then continues 7 miles southwest along Highway 108 to its intersection with Mill Creek, then continues 4 miles east along Mill Creek to its intersection with Forest Road No. 19EV114, then continues 2 miles west along Forest Road No. 19EV114 Road to its intersection with Forest Road No. 4N12, then continues 5 miles south along Forest Road No. 4N12 to its intersection with Forest Road No. 5N31, then continues 2 miles south and west along Forest Road No. 5N31 to its intersection with Forest Road No. 5N55Y, then continues east for 1 mile along Forest Road No. 5N55Y to its intersection with Forest Trail No. 19E31, then continues 1 mile south along Forest Trail No. 19E31 to its intersection with the Emigrant Wilderness boundary, then continues 14 miles south along the Emigrant Wilderness boundary to the SW ¼ Section 32, T3N R9E, then continues 0.6 mile due west to Reynolds Creek and its junction with Forest Road No. 3N01, then continues 15 miles west along Forest Road No. 3N01 to its intersection with Forest Road No. 4N33, then continues 8 miles north along Forest Road No. 4N33 to its intersection with Forest Road No. 4N26 (Crabtree Road), then continues 7 miles west on Forest Road No. 4N26 (Crabtree Road) to its intersection with Highway 108, then continues 15 miles north on Highway 108 to its intersection with Niagara Creek, then continues 1.5 miles northwest along Niagara Creek to its intersection with the Donnell Lake south shore, then continues 1.5 miles west along the Donnell Lake south shore to the Middle Fork Stanislaus River, then continues 4 miles southwest along the Middle Fork Stanislaus River to its intersection with Basin Creek, then continues 1 mile along Basin Creek to its intersection with Forest Road No. 6N05, then continues 2 miles south along Forest Road No. 6N05 to its intersection with Forest Road No. 5N14, then continues 19 miles north and east along Forest Road No. 5N14 to its intersection with Forest Road No. 6N17, the continues 3 miles north along

Forest Road No. 6N17 to one half mile North of 6N95Y, then continues 1.5 miles due northwest across the North Fork Stanislaus River to the junction of Highway 4 and Forest Road No. 7N23, then continues 6 miles north along Forest Road No. 7N23 to its intersection with Forest Road No. 7N09, then continues 11 miles west and north along Forest Road No. 7N09 back to the starting point, as shown on the attached map (Exhibit A).

**Forest Order No. STF-16-2021-06  
Stanislaus National Forest  
Temporary Fire Restrictions – Moderate Hazard Area  
Exhibit C**

**Exempted Developed Recreation Sites**

MIWOK RANGER DISTRICT

Hull Creek Campground

CALAVERAS RANGER DISTRICT

Big Meadow Campground

SUMMIT RANGER DISTRICT

Cottonwood Picnic Area

Clark Fork Campground

Clark Fork Horse Camp

Crabtree Campground

Donnell Vista Picnic Area

Fence Creek Campground

Herring Creek Campground

Kerrick Corral Horse Camp

Meadowview Campground

Pioneer Trail Group Campground

Pinecrest Campground

Pinecrest Lake Picnic Area

Pine Valley Horse Camp

Sand Flat Campground





United States  
Department of  
Agriculture

Forest  
Service

Stanislaus National Forest

19777 Greenley Road  
Sonora, CA 95370  
(209) 532-3671  
FAX: (209) 533-1890  
TTY/TDD: (209) 533-0765  
<http://www.fs.usda.gov/stanislaus>

File Code: 1950

Date: June 23, 2021

Route To:

**Subject:** Forest Order No. STF-16-2021-06  
Fire Restrictions (Moderate Fire Hazard Area)

**To:** Project File

**From:** Jason Kuiken, Forest Supervisor

To provide for public safety and protect natural resources, I have decided to implement fire restrictions within the Moderate Fire Hazard Area of the Stanislaus National Forest, as stated in Forest Order No. STF-16-2021-06, and as shown on Exhibit A and described in Exhibit B.

The Moderate Fire Hazard Area of the Stanislaus National Forest is located in Calaveras, Alpine, and Tuolumne Counties, California. The Stanislaus National Forest's Fire Management Plan (Appendix A, Wildland Fire Management Program Implementation) and Forest Service Manual (FSM) 5110.4 provide authority and guidance on implementing actions that reduce the risk of certain ignition sources during periods of high fire risk.

Criteria for activating fire restrictions in the Moderate Fire Hazard Areas through a forest order are based on National Fire Danger Rating System indices and fuel moisture conditions. The indices that can trigger fire restrictions in the Moderate Fire Hazard Area are: Burning Index is 80 or greater for three consecutive days with a predicted stable or upward trend; dead fuel moisture content for thousand-hour time lag fuels are less than 13%; and Energy Release Component greater than 80.

The Stanislaus National Forest currently meets all of the criteria for activating fire restrictions within the Moderate Fire Hazard Area using the Mt. Elizabeth weather station as the representative site. Combinations of the data above threshold levels for multiple days along with upward trending data indicate a need for restricting potential fire-causing activities within the Moderate Fire Hazard Area until the end of the 2021 official fire season.

These restrictions are believed to be the most immediate and effective method to reduce the potential for loss of life and property, and to protect the physical, biological, and cultural resources of the forest from fire.

Scoping was conducted, and coordination with local fire agencies and neighboring federal agencies (Bureau of Land Management, Yosemite National Park) indicate support of changed conditions and appropriate adjustment in fire restrictions given current conditions. The public notification of these restrictions will occur via a press announcement published by the local newspapers and postings in public places of Stanislaus National Forest facilities. The Forest Service will install signs along roads entering the Moderate Fire Hazard Area to alert the public



to these fire restrictions, in addition to posting the Forest Order at each Stanislaus National Forest Office on outdoor kiosks.

I have concluded that this decision may be categorically excluded from documentation in an Environmental Impact Statement (EIS) or Environmental Assessment (EA) under the National Environmental Policy Act. This action falls within the category identified in 36 CFR 220.6(d)(1) – prohibitions to provide short-term resource protection or to protect public health and safety – and does not require documentation in a decision memo, decision notice, or record of decision. I have determined that there are no extraordinary circumstances associated with this temporary closure. Implementation of the decision may begin immediately.

This Forest Order includes several exemptions. It includes an exemption for persons with a Forest Permit for Use of Roads, Trails, or Areas Restricted by Regulation or Order (Form FS-7700-48). Authorization for entry under this exemption will only be provided if I or my delegate determines that the risk to personal health and safety is reasonable considering the circumstances of the request. I may also require appropriate personal protective equipment and other necessary safety measures. I hereby delegate the authority to sign Form FS-7700-48 granting an exemption to this Forest Order to the District Rangers of the Stanislaus National Forest.

The Forest Order includes an exemption for persons with a valid California Campfire Permit. With a valid permit, visitors may use a portable lantern or stove using gas, jellied petroleum, or pressurized liquid fuel during their Forest visit.

The Forest Order includes an exemption to any Federal, State, or local officer or an organized rescue or fire fighting force responding to an emergency while performing an official duty to provide for public safety and service.

These restrictions are temporary and will be in effect from June 24, 2021, through December 31, 2021. For further information regarding this decision, contact: Clint Gould, Deputy Forest Fire Management Officer, Stanislaus National Forest, located at 19777 Greenley Road, Sonora, CA, (209) 288-6242 (office) or (209) 283-4558 (cell).