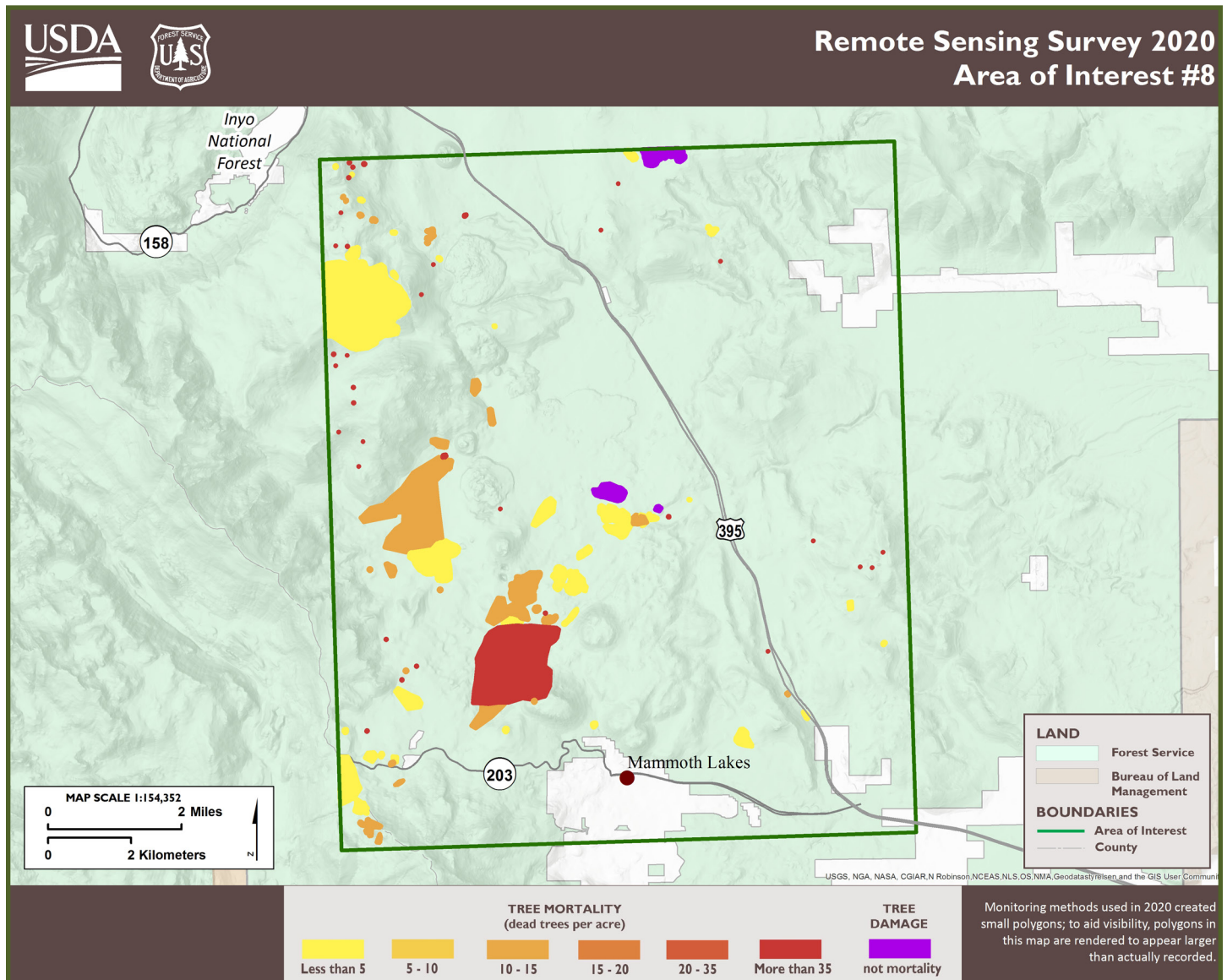


Results by AOI: 8

Land Ownership: Inyo NF, private land



Host and Agent	County	2020 # of Trees, rounded to nearest 100 (estimate derived from acreage by % area affected metrics)	Increase or Decrease from 2019?
yellow pine – pine beetle	Mono Madera	2,000	decrease
limber pine, western white pine (<i>Pinus monticola</i>), whitebark pine (<i>Pinus albicaulis</i>) – mountain pine beetle	Mono Madera	600	decrease
Lodgepole pine – mountain pine beetle	Mono Madera	34,200	increase
red fir – fir engraver	Mono Madera	8,200	decrease

Monitoring in 2020 detected considerable ongoing but reduced amounts of California red fir mortality in AOI 8. Non-mortality damage was due to wildfire affecting all tree species and branch flagging in live oak.