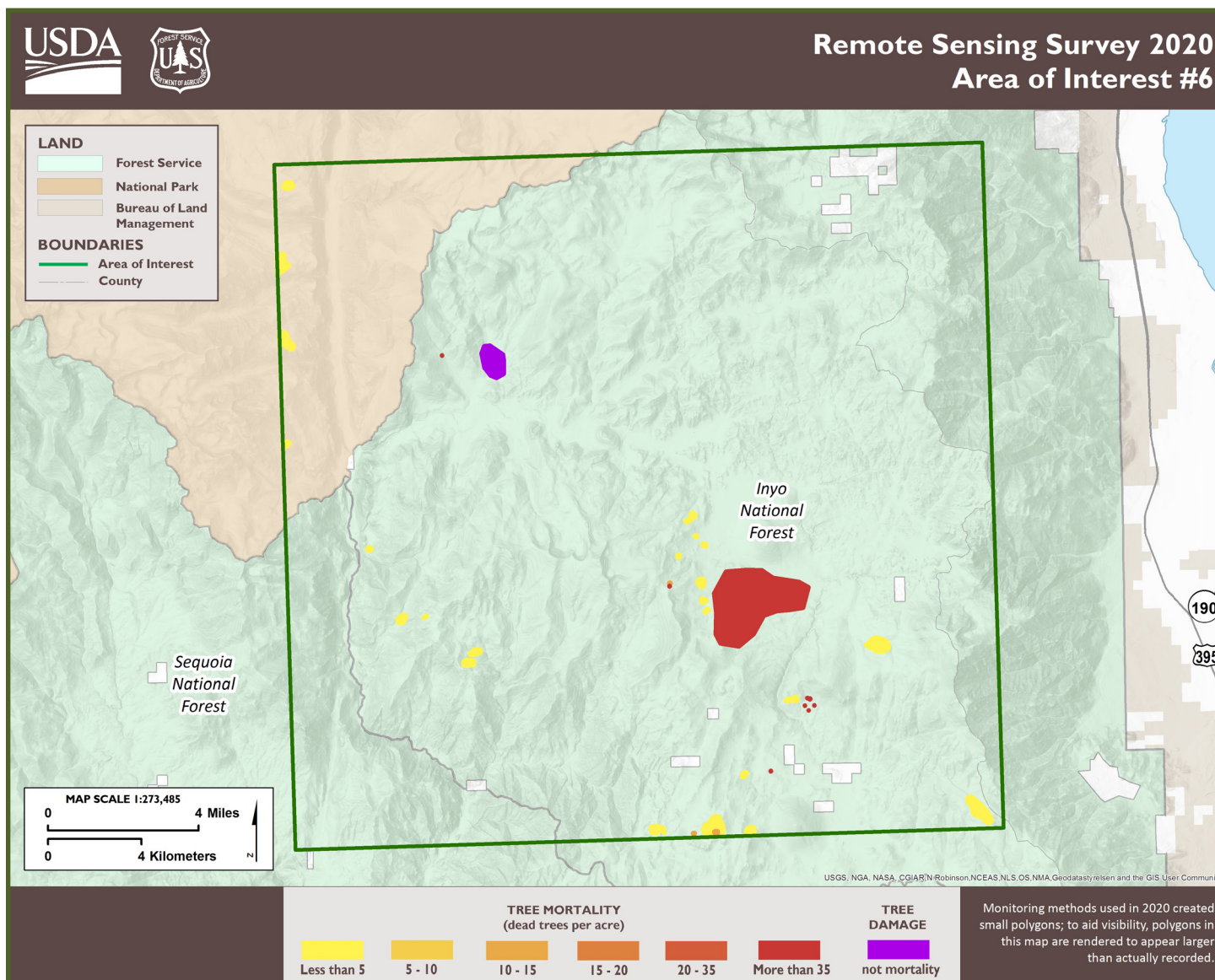


## Results by AOI: 6

Land Ownership: BLM, Inyo NF, private land, Sequoia NF, Sequoia-Kings Canyon NP



Host and Agent	County	2020 # of Trees, rounded to nearest 100 (estimate derived from acreage by % area affected metrics)	Increase or Decrease from 2019?
Yellow pine – pine beetle	Tulare Inyo	<100	decrease
Lodgepole pine ( <i>Pinus contorta</i> ) and limber pine ( <i>Pinus flexilis</i> ) – mountain pine beetle ( <i>Dendroctonus ponderosae</i> )	Tulare Inyo	<100	decrease
white fir and red fir ( <i>Abies magnifica</i> ) – fir engraver	Tulare Inyo	181,200	increase

Mortality in white and red fir attributed to fir engraver increased in AOI 6. Jeffrey pine and ponderosa pine mortality was lower. ADS in 2019 and RS in 2020 also detected some isolated areas of high-elevation five needle pine mortality. Non-mortality damage was due to wildfire and affected all tree species. About 15% of this AOI was affected by the SQF Complex after the damage shown on this map was recorded.