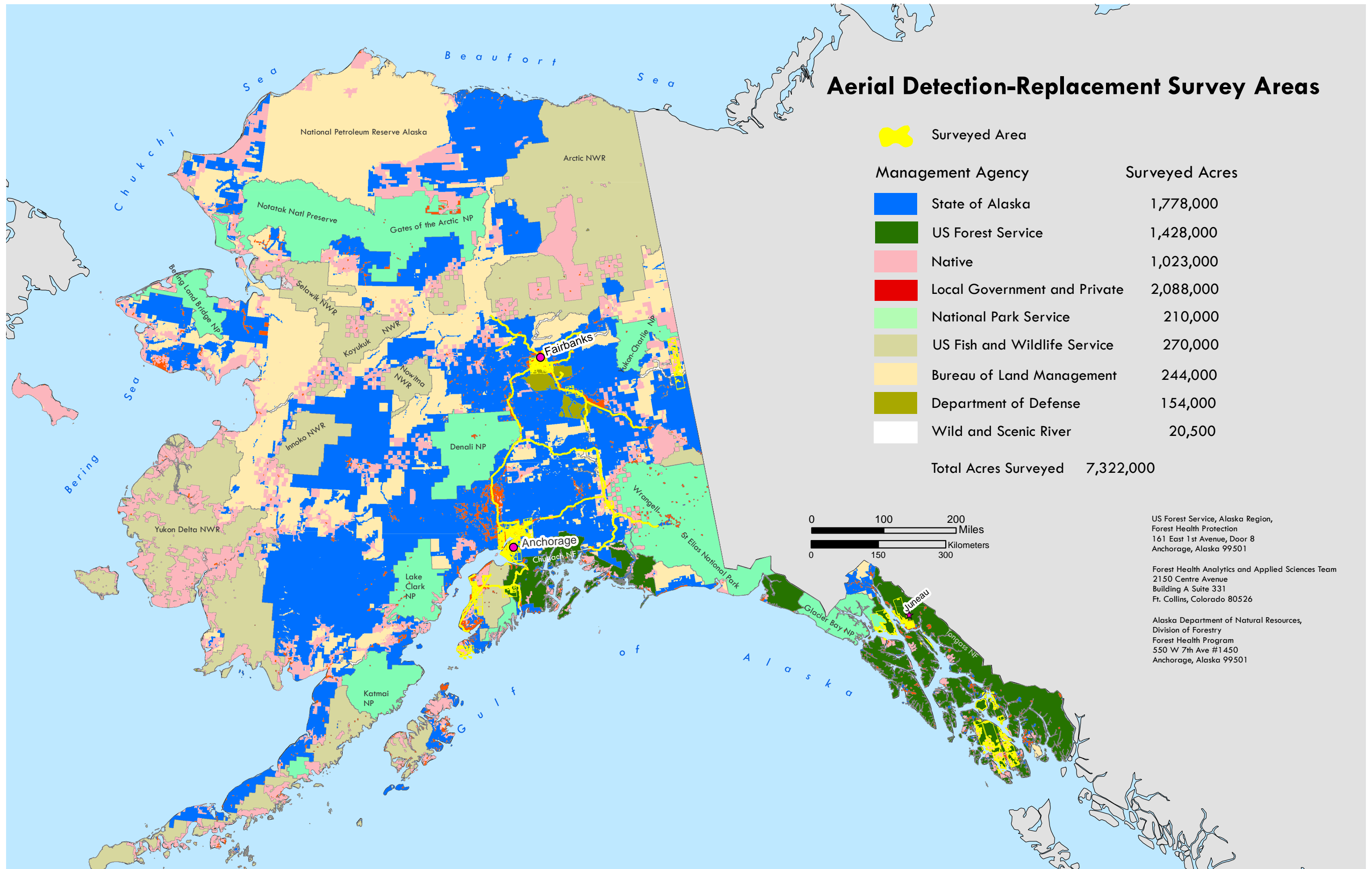
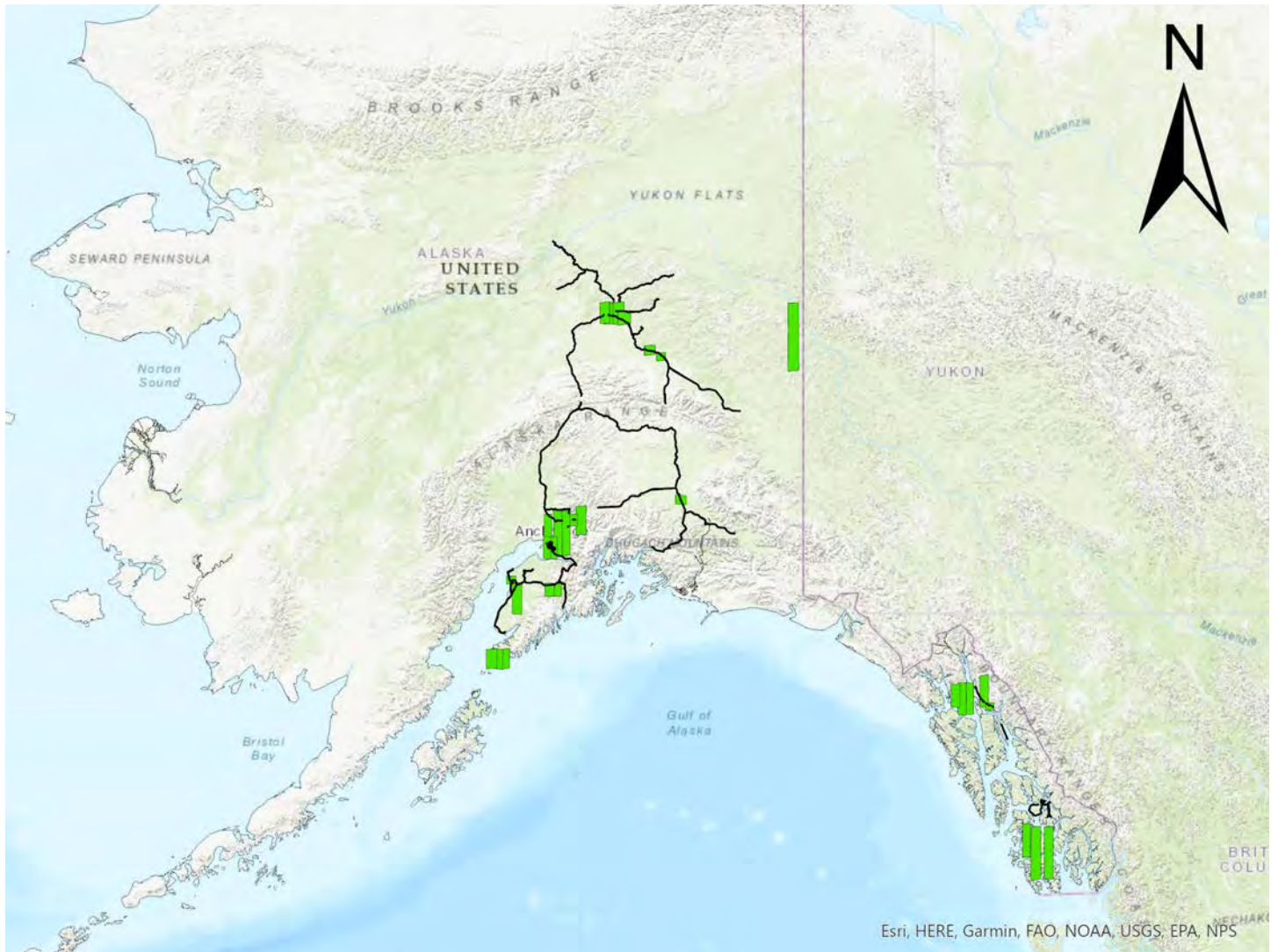


Map 3. 2020 Aerial Detection-Replacement Survey. For more information on changes to the survey methods in 2020, please see Appendix 1, page 66.

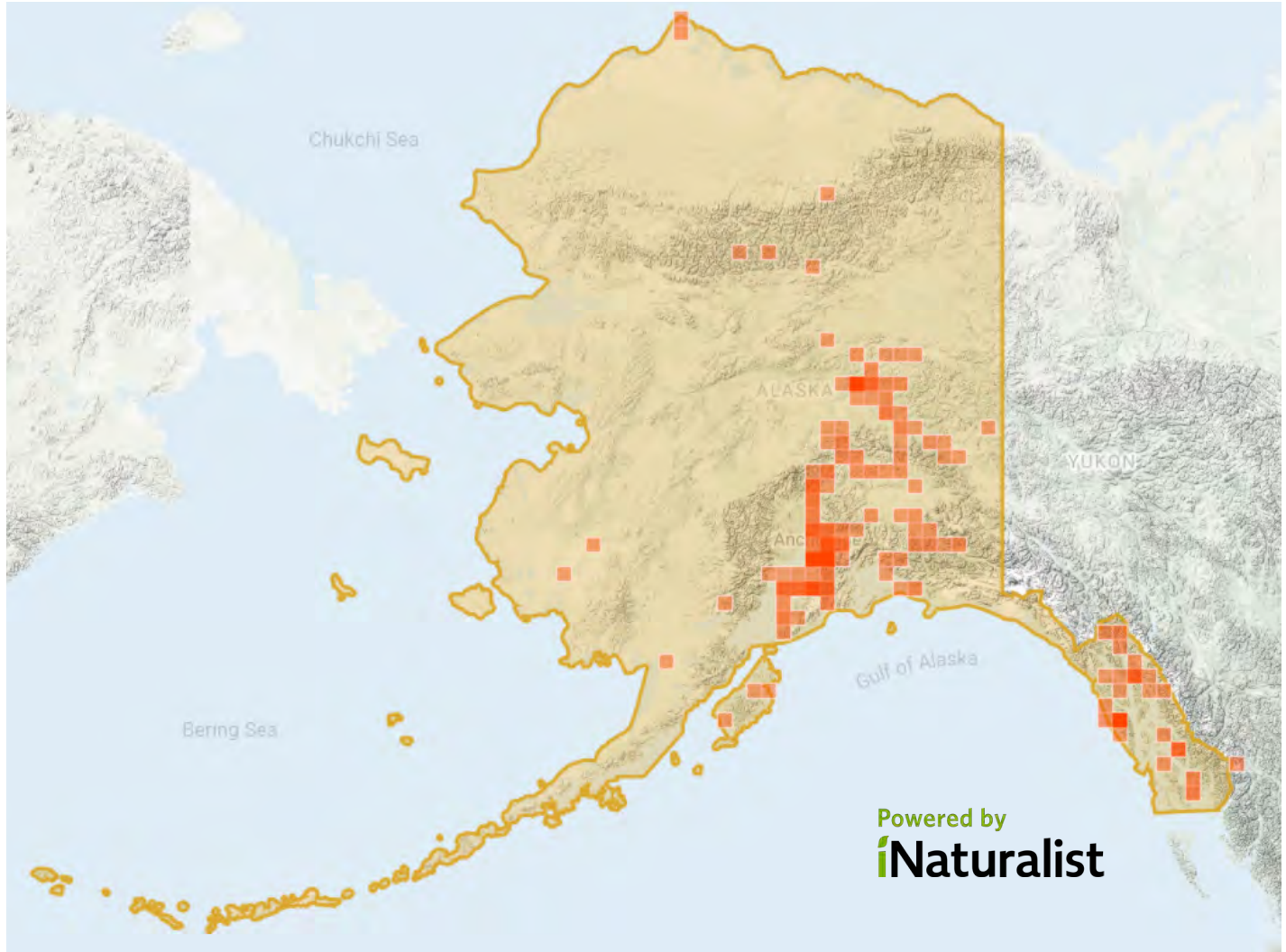
Aerial Detection-Replacement Survey Areas



Map 4. 2020 Aerial Detection-Replacement Survey areas. For more information on changes to the survey methods in 2020, please see Appendix 1, page 66



Map 1. Ground surveys along roads were performed (black routes) and high-resolution imagery (green polygons) was systematically scanned, resulting in nearly 345,000 acres of damage mapped across 7.3 million acres surveyed in 2020.



Map 2. Map of citizen science observations recorded on iNaturalist in Alaska between May and December 2020 (Available from <https://www.inaturalist.org>. Accessed 12/10/20).