

Access:

From Republic drive north on Hwy 20/21 2.54 miles. Turn left on Hwy 21 and drive 9 miles. Turn right on Lambert Creek Rd and drive 5 miles to US Forest Service Road #2156. Drive ahead 1.3 miles to the Old Stage #1/ Midnight Ridge trailhead.



Points of Interest



View #1:

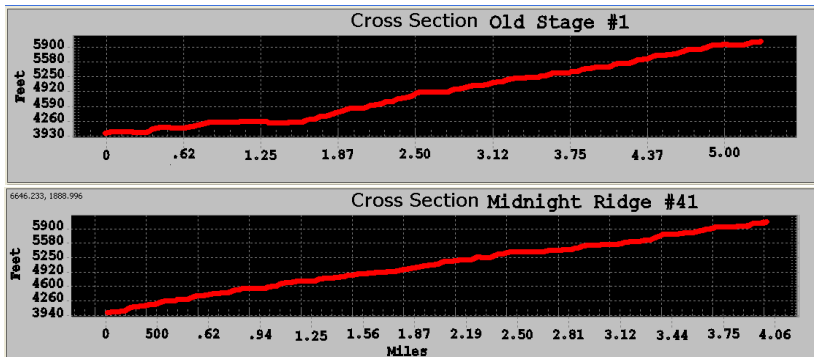


View #2:

History: The Old Stage Trail #1 is the remaining segment of the 1st Washington State Highway. There are various interpretive steel and rock cairns along the route. The contract for the highway called for driving a wagon over the route but the contractors actually disassembled the wagon and packed it on horses.

Cautions:

Treat surface water before drinking. Prepare for all weather. Watch out for large animals.

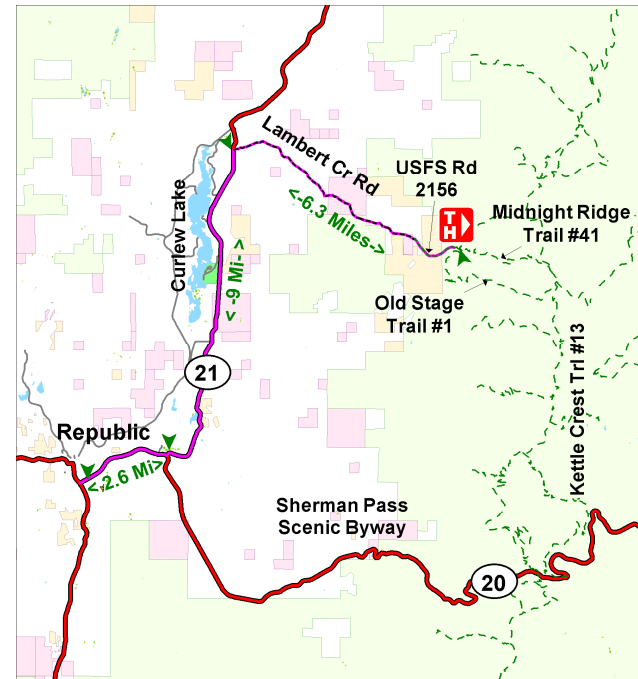


Old Stage #1 & Midnight Ridge #41

Characteristics	Old Stage Trail #1	Midnight Ridge
Elevation at Trailhead	3914 ft	3914 ft
Highest Point	6075 ft	6100 ft
Elevation Change	2161 ft	2186 ft
Length	5.7 Miles	4.1 Miles
Difficulty	More Difficult	More Difficult
Season	Spring, Summer, Fall, Winter	

Description:

These trails are longer than most and gain more altitude than most trails accessing the Kettle Range Trail. The trailhead from the Kettle Falls side has a camp with restrooms. This was an early wagon route to the Belcher Mining Camp. A wagon rally was held in 1992 over this route, but has washed out since then.



Emergency phone number: 911

For more information:

Three Rivers District
(509) 738-7700

Access:

From Kettle Falls follow U.S. Highway 395 West to State route 20. Turn left toward Sherman Pass.. Continue on State route 20 for 22 miles. Turn north on Albion Hill Road 2030 and travel 7.3 miles to road. Turn right into the trailhead parking area. There are facilities in the parking area.



Points of Interest



View #1:



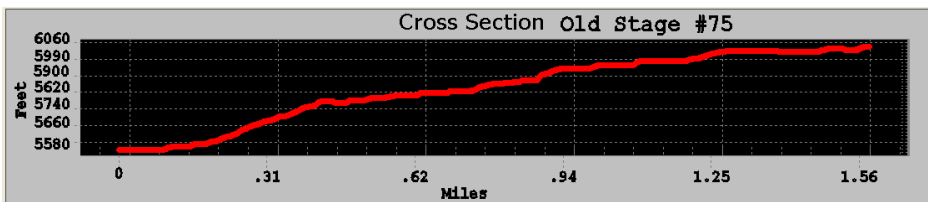
View #2:

History:

The Old Stage Trail #1 is the remaining segment of the 1st Washington State Highway. Besides the packing the wagon trick on the access from Republic page, reportedly the road contractors took inspectors over in the winter when 2 feet of compact snow covered the stumps that were still in the roadway of the supposedly finished highway.

Cautions:

Treat surface water before drinking. Prepare for all weather. Watch out for large animals.

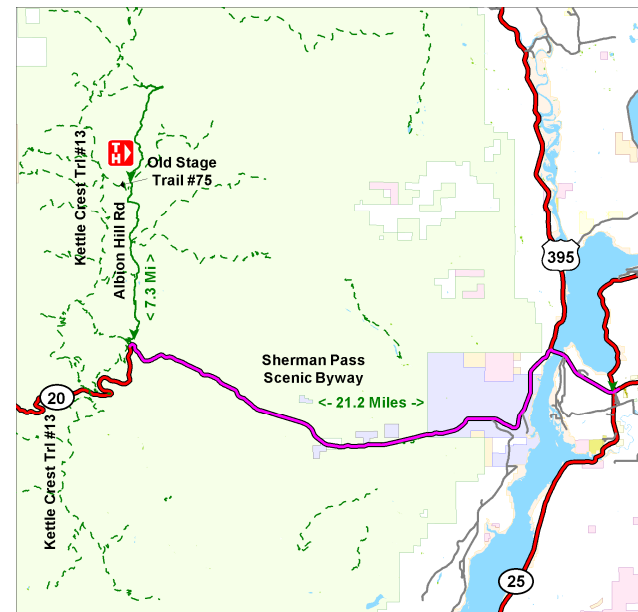


Old Stage #1, #75 & Midnight Ridge

Characteristics	Old Stage #75
Elevation at Trailhead	5550 ft
Highest Point	6075 ft
Elevation Change	525 ft
Length	1.6 Miles
Difficulty	Less Difficult
Season	Summer

Description:

The trailhead from the Kettle Falls side has a camp with restrooms. This is a favorite route for the Backcountry Horsemen. It provides a short route to the Kettle Crest Trail but there are no easy loops back to the original trailhead.



Emergency phone number: 911

For more information:

Three Rivers District
(509) 738-7700

Old Stage #1 & #75 - Midnight Ridge Trail #41

