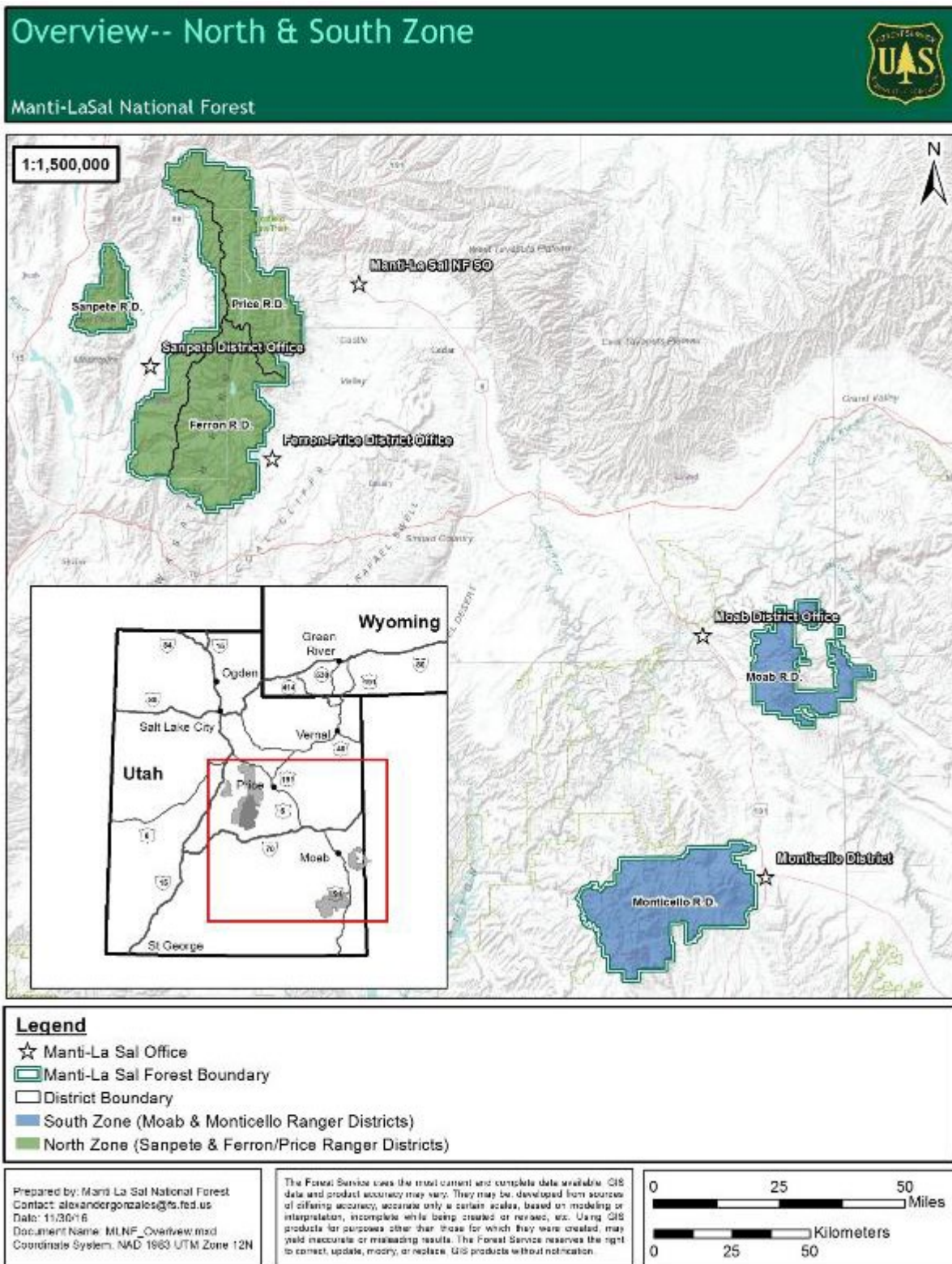
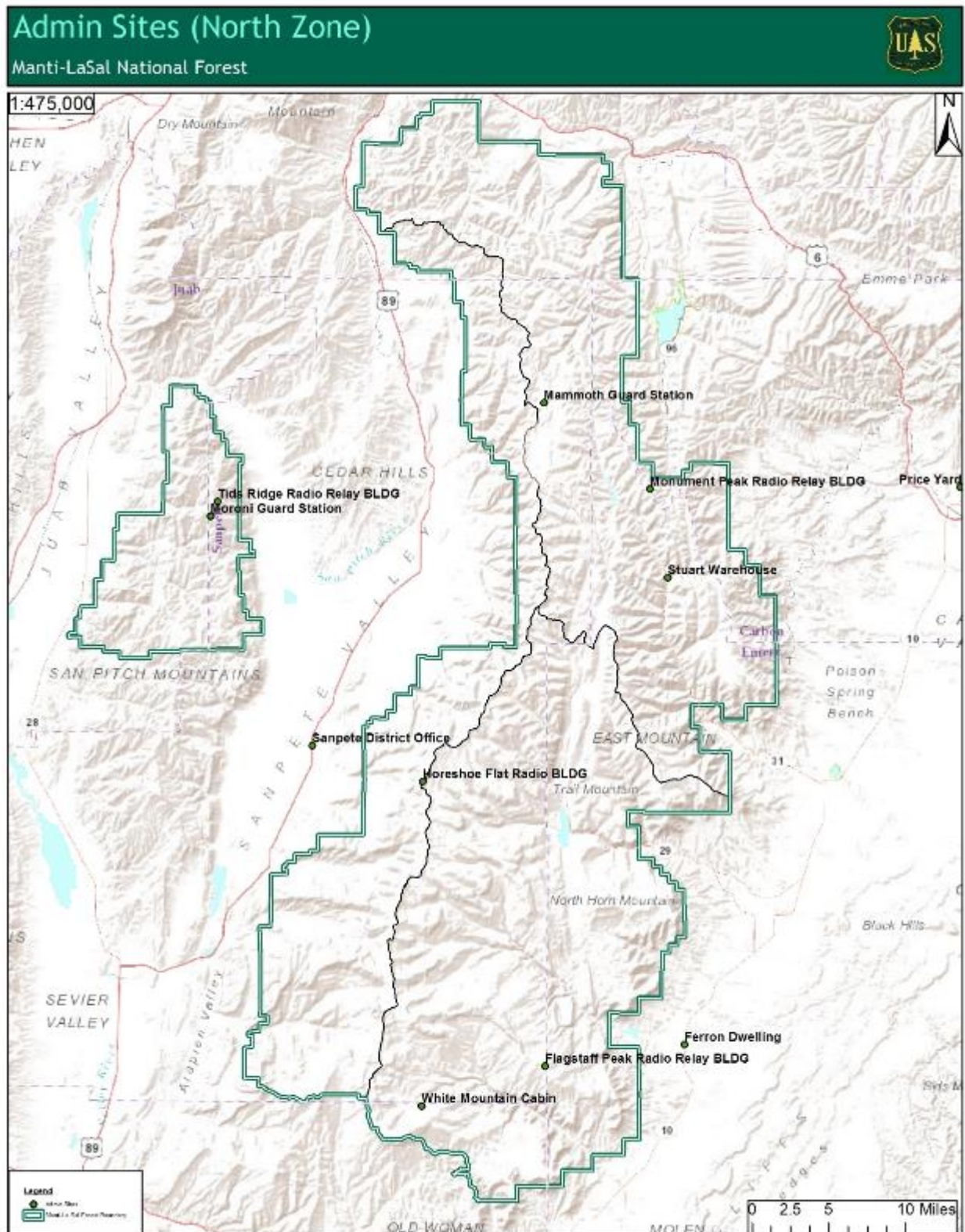
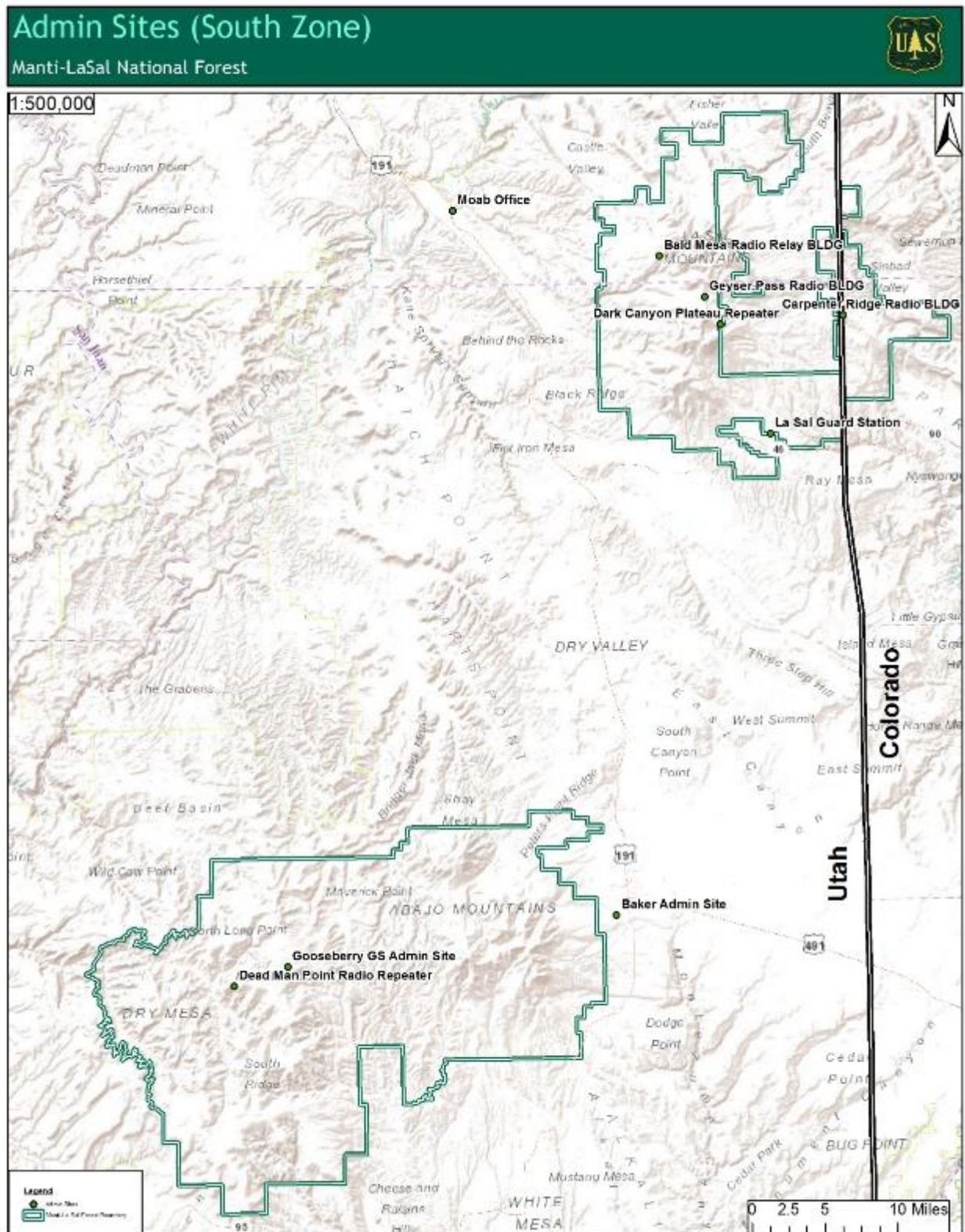
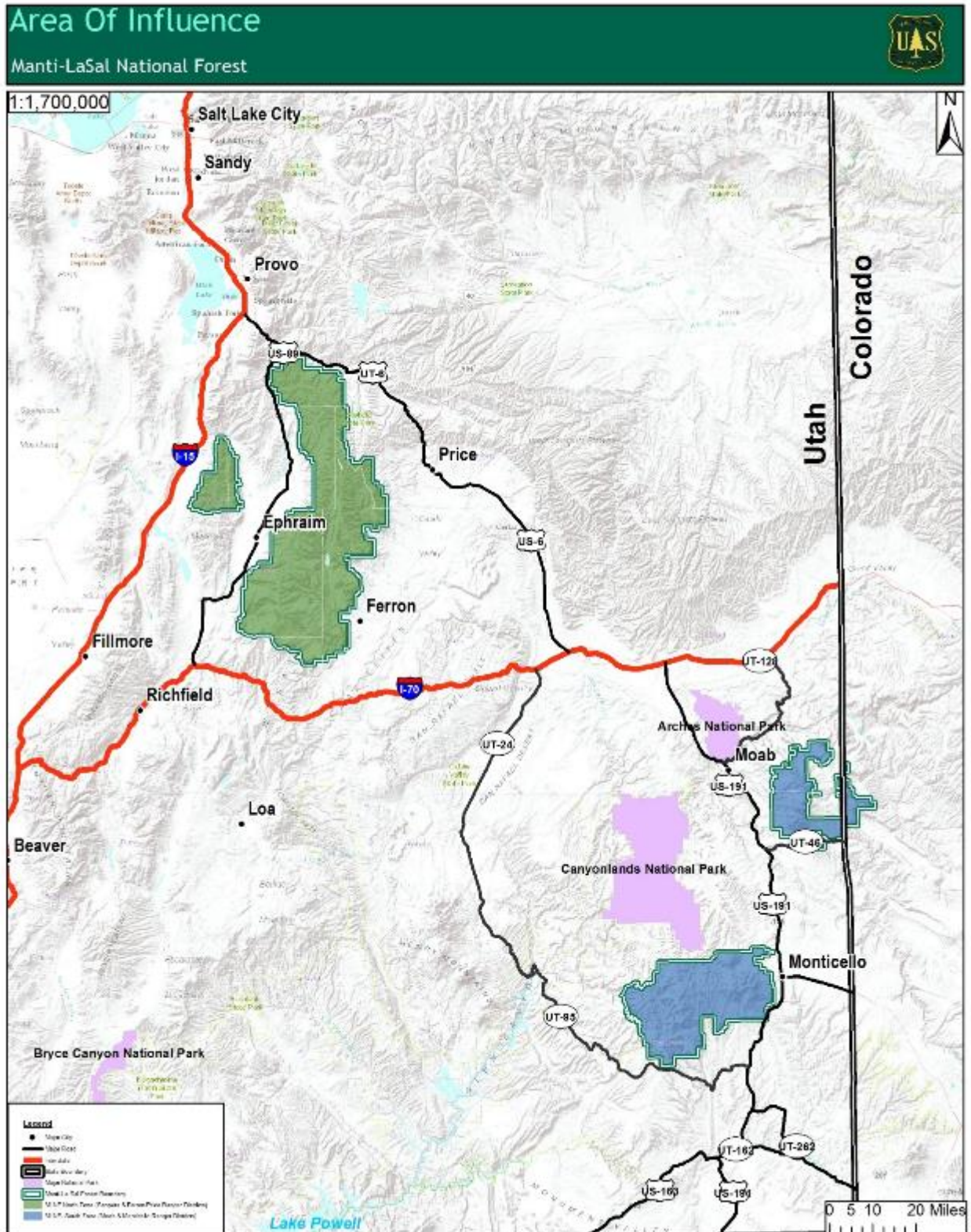


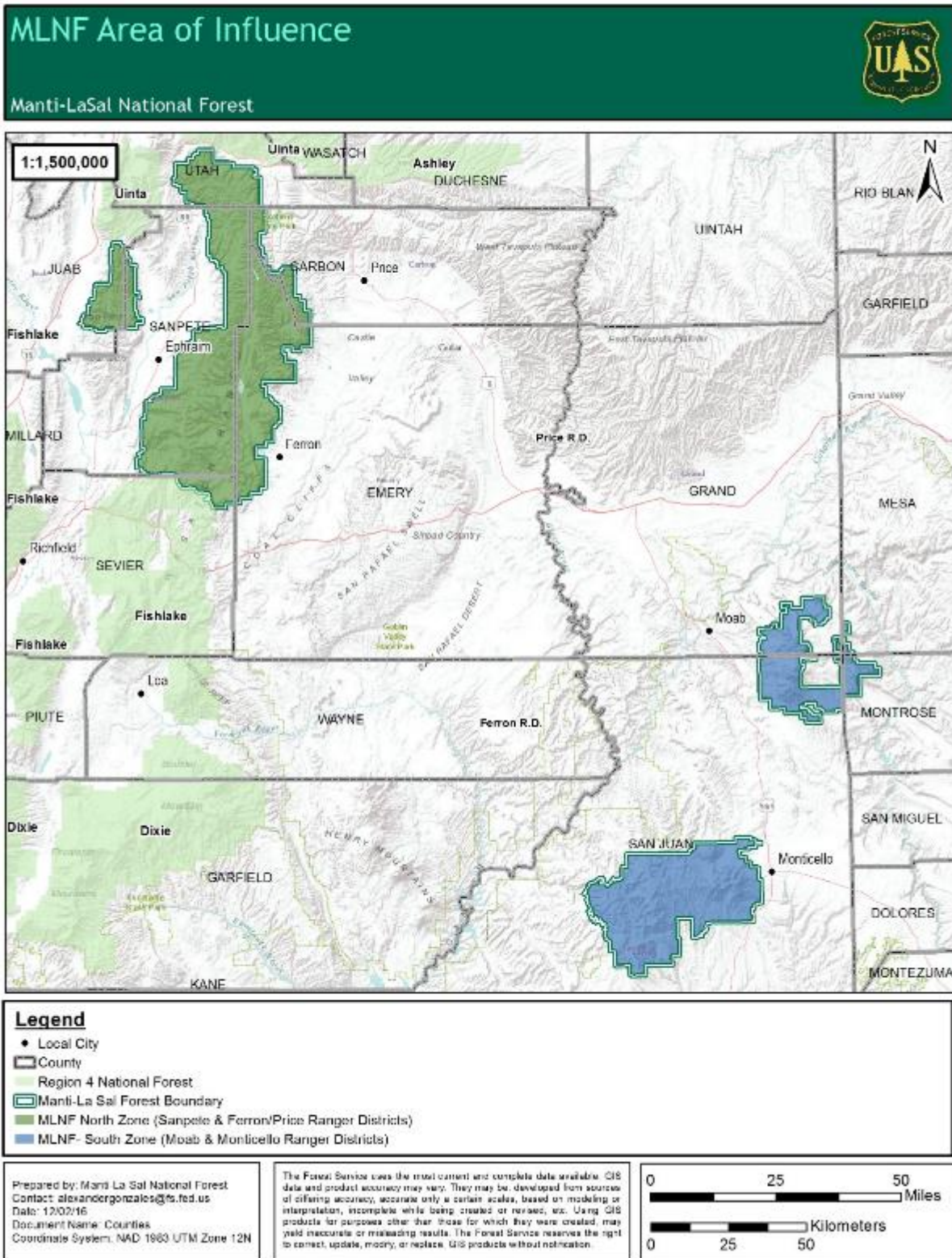
APPENDIX 1: MAPS

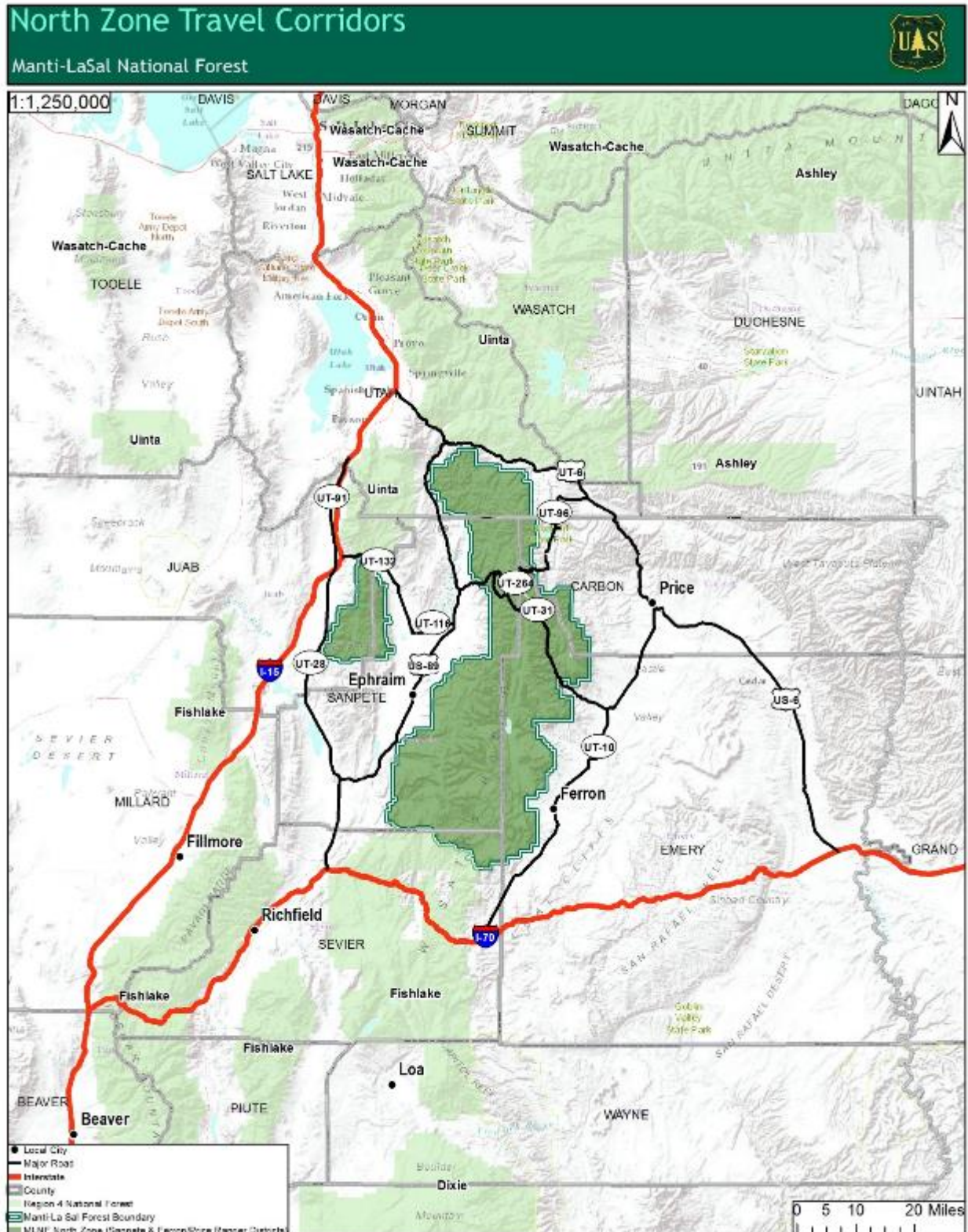












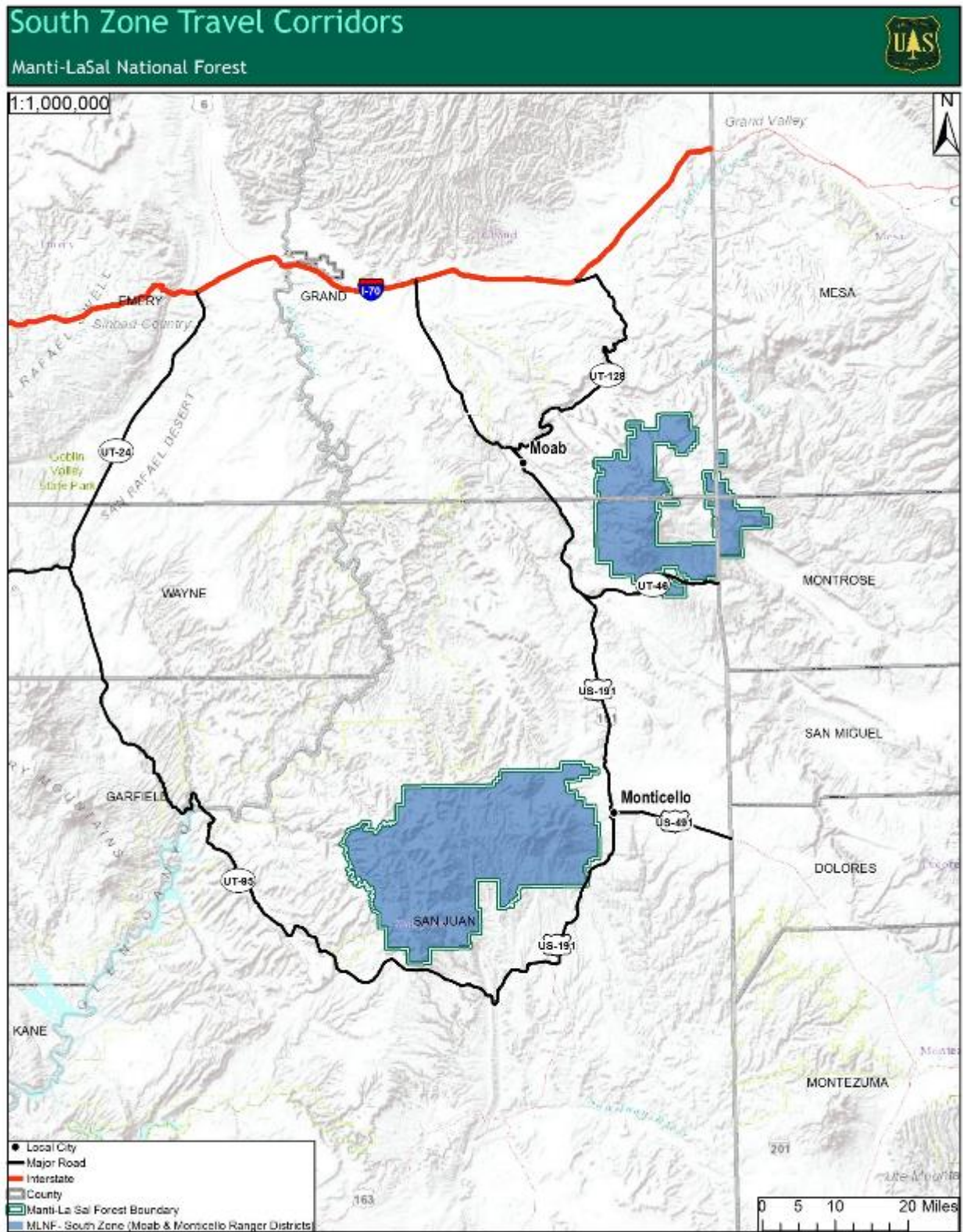


Table 1. San Pitch mountains and borderlands land-type association groups on the Forest. Key for two following maps.

Group Code	Name
SP_LTAG1	Western Front Lower Slopes
SP_LTAG2	Western Front Mountains
SP_LTAG3	Conglomerate Cliffs
SP_LTAG4	Central Plateau
SP_LTAG5	North Eastern Canyons
SP_LTAG6	Eastern Front Benches and Cliffs

Table 2. Wasatch plateau land-type association groups on the Forest. Key for two following maps.

Group Code	Name
WP_LTAG1	Western Front Lower Canyon Slopes
WP_LTAG2	Western Mountains & Basins
WP_LTAG3	Western Front Flat Iron Ridges
WP_LTAG4	Western Mountain Plateau Top
WP_LTAG5	Western Mountain Mid-Mountain Benches
WP_LTAG6	Western Mountain SE Lower Slopes
WP_LTAG7	Southern Tablelands
WP_LTAG8	Northern Fault Valleys
WP_LTAG9	Southern Fault Valleys
WP_LTAG10	Eastern Mountains Upper Canyon Slopes
WP_LTAG11	Eastern Mountains Lower Canyon Slopes
WP_LTAG12	Rocky Canyons
WP_LTAG13	Eastern Escarpment
WP_LTAG14	Northern Slope
WP_LTAG15	Thistle Highlands Western Slopes
WP_LTAG16	Thistle Highlands North Eastern Slopes

Table 3. La Sal mountains land-type association groups on the Forest. Key for two following maps.

Group Code	Name
LSM_LTAG1	Lower slope alluvial fans and moraines
LSM_LTAG2	Mid-slopes and passes
LSM_LTAG3	Peaks

Table 4. La Sal mountains and borderlands land-type association groups on the Forest. Key for two following maps.

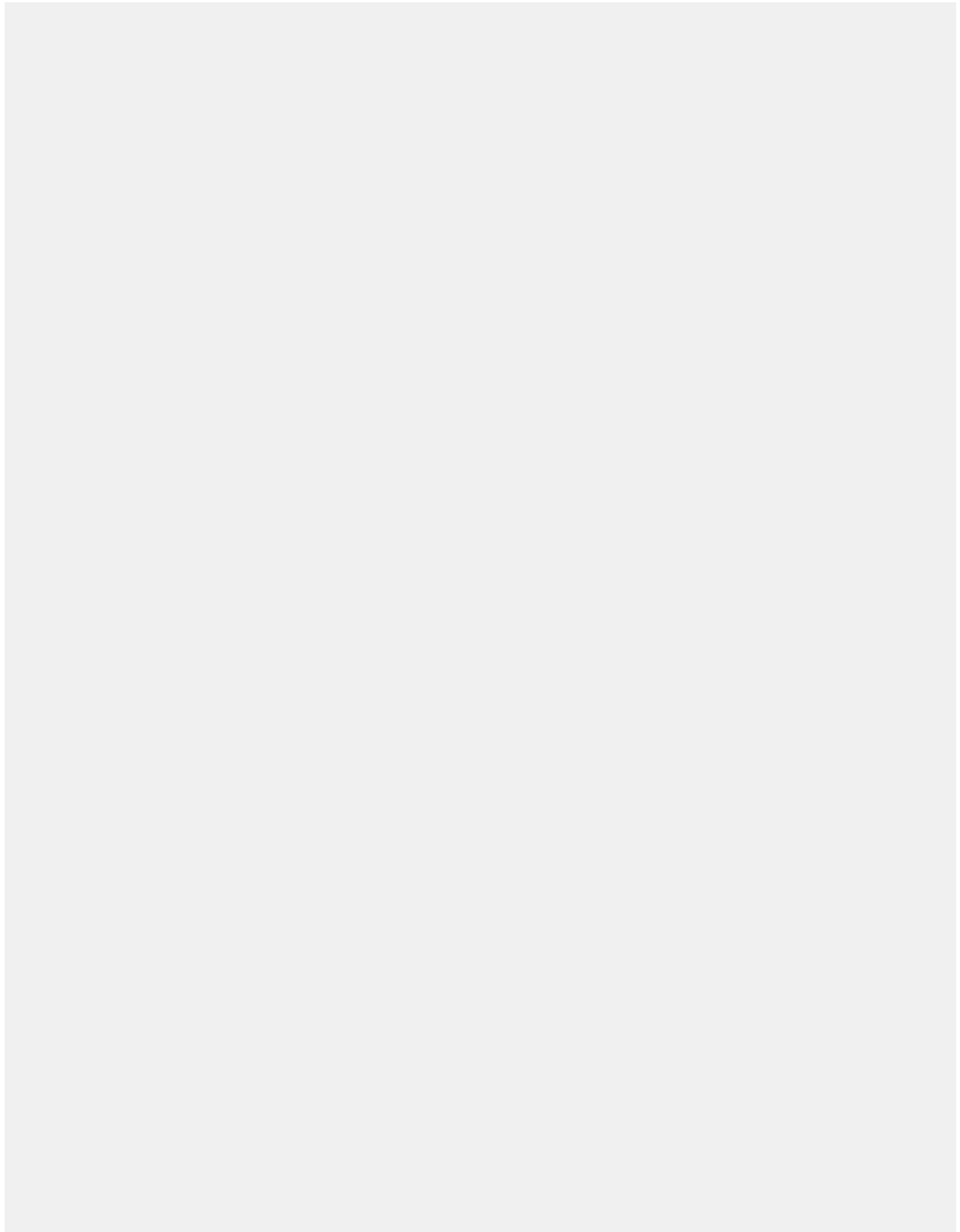
Group Code	Name
LSMB_LTAG1	Upper till covered mesas
LSMB_LTAG2	Lower sandstone and till covered mesas
LSMB_LTAG3	Dissected mesas
LSMB_LTAG4	Southern alluvial fans
LSMB_LTAG5	Eastern moraines and slopes
LSMB_LTAG6	Eastern Ponderosa pine covered mesas
LSMB_LTAG7	Collapsed salt anticlines
LSMB_LTAG8	Rocky canyons
LSMB_LTAG9	Escarpments and rocky slopes
LSMB_LTAG10	Southern graben valleys

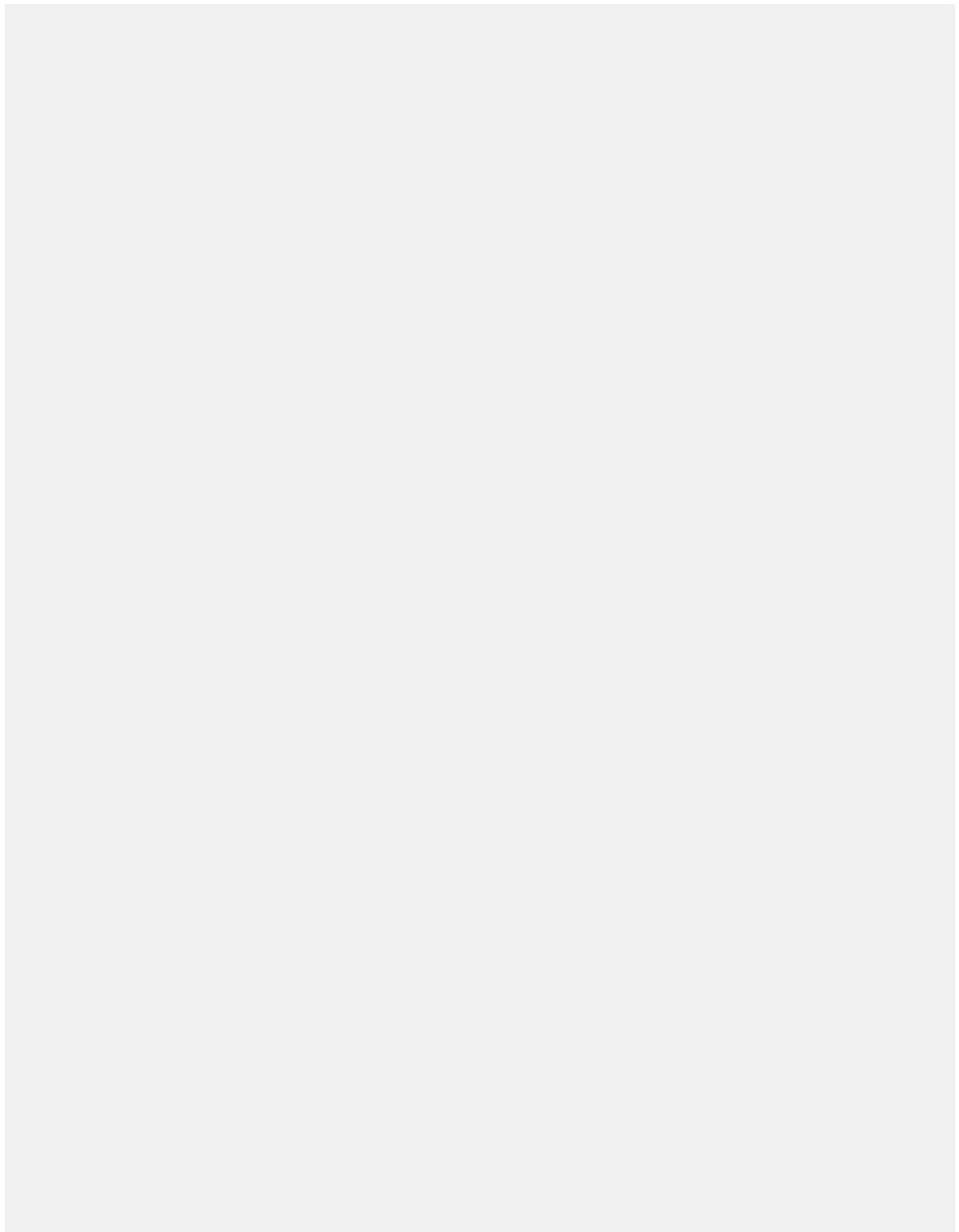
Table 5. Abajo Mountains land-type association groups on the Forest. Key for two following maps.

Group Code	Name
A_LTAG1	Igneous mountains
A_LTAG2	Shay mountain
A_LTAG3	Alluvial fans and plains
A_LTAG4	Landslides terrain
A_LTAG5	Shay mountain colluvial slopes and fans

Table 6. Mesas and canyons land-type association groups on the Forest. Key for two following maps.


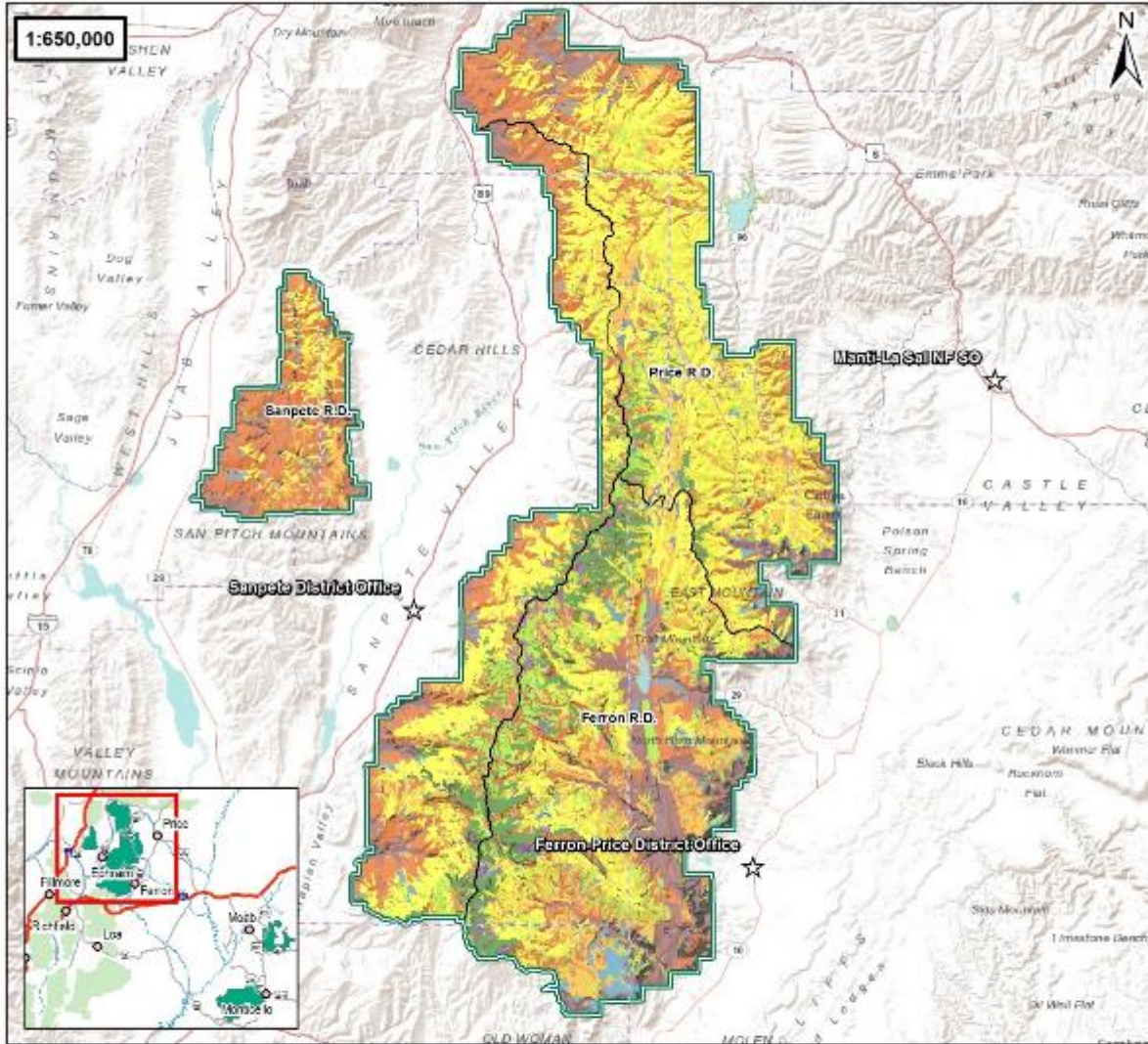
Group Code	Name
MC_LTAG1	Lower mesas
MC_LTAG2	Mid elevation mesas
MC_LTAG3	Higher elevation mesas
MC_LTAG4	Canyon slopes
MC_LTAG5	Canyon bottomlands





North Zone Vegetation Overview

Manti-LaSal National Forest

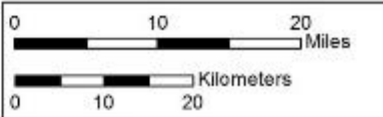



Legend

- ★ Manti-La Sal Office
- ▭ Manti-La Sal Forest Boundary
- ▭ District Boundary
- Vegetation Communities
 - Alpine
 - Aspen and Mixed Conifer
 - Barren Rock
 - Mixed Conifer (dry)
 - Mountain Brush
 - Perennial Forbs & Grasslands
 - Pinyon-Juniper
 - Riparian Wetlands
 - Sagebrush Lands
 - Spruce/fir Conifer

Prepared by: Manti-La Sal National Forest
 Contact: alexandorgonzales@fs.fed.us
 Date: 11/30/16
 Document Name: VegetationCommunities_NZ
 Coordinate System: NAD 1983 UTM Zone 12N

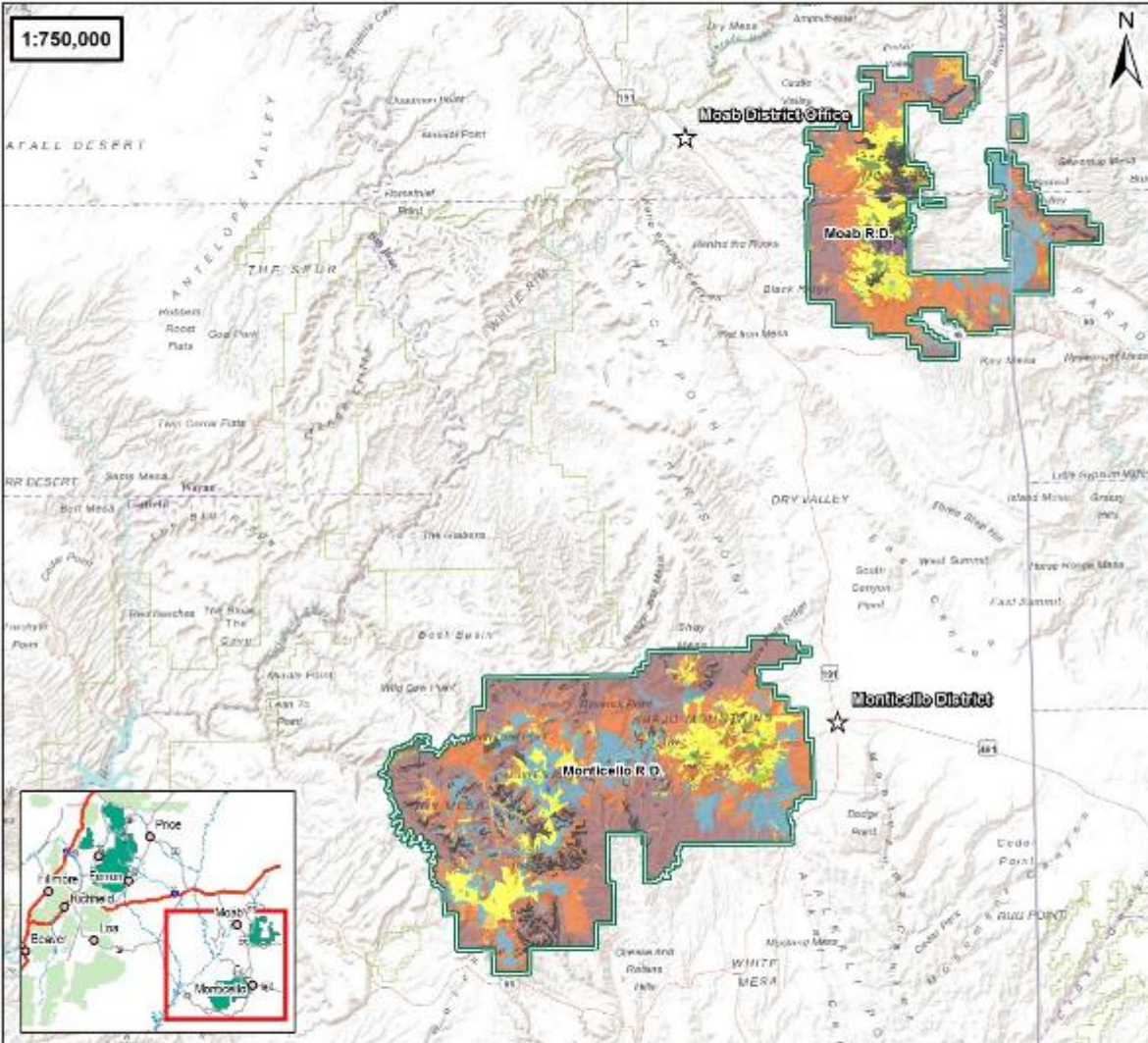
The Forest Service uses the most current and complete data available. GIS data and product accuracy may vary. They may be developed from sources of differing accuracy, accurate only at certain scales, based on modeling or interpretation, incomplete while being created or revised, etc. Using GIS products for purposes other than those for which they were created, may yield inaccurate or misleading results. The Forest Service reserves the right to correct, update, modify, or replace GIS products without notification.



South Zone Vegetation Overview



Manti-La Sal National Forest

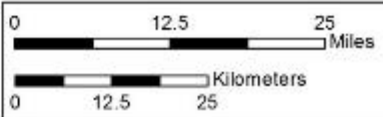


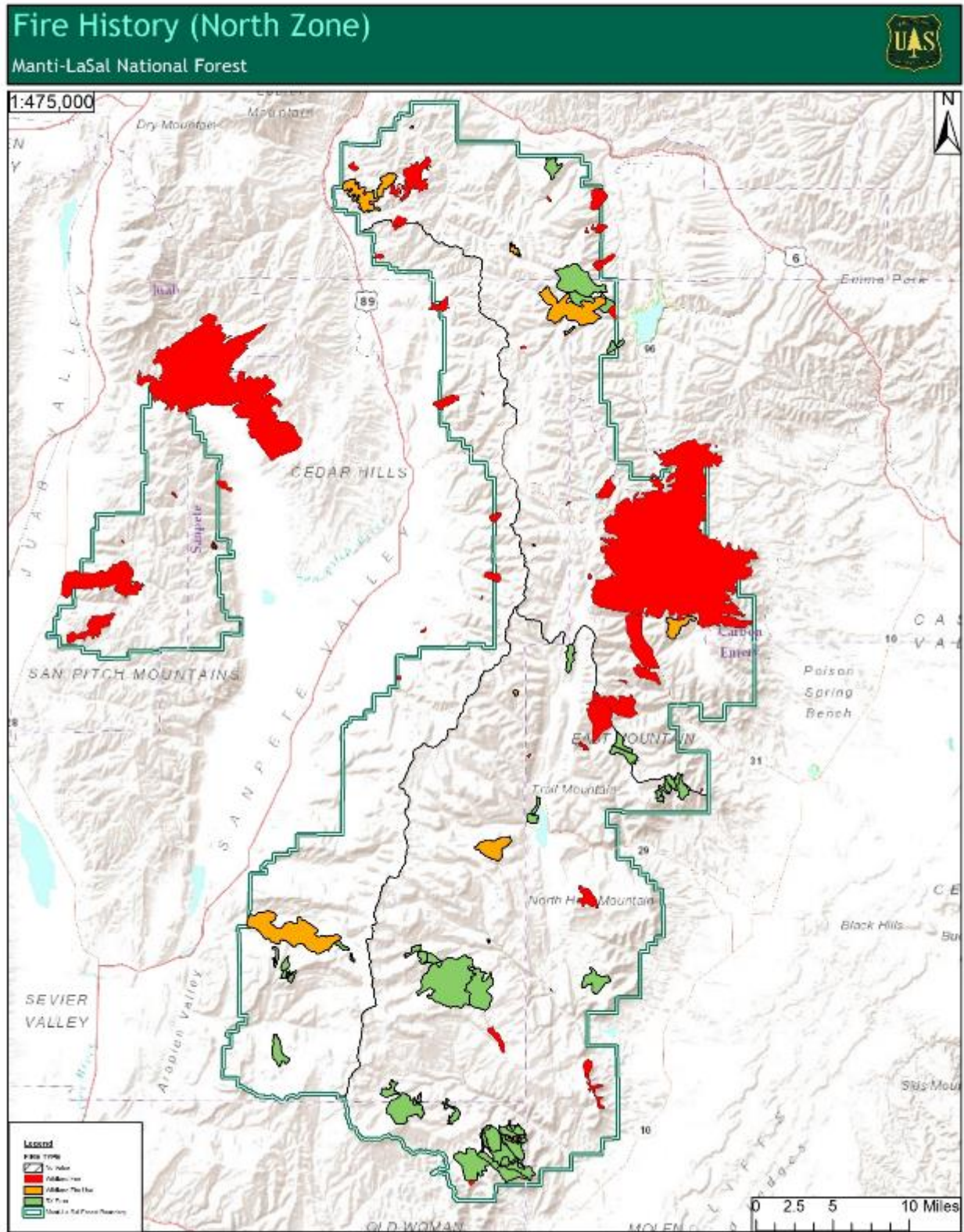
Legend

- ★ Manti-La Sal Office
- ▭ Manti-La Sal Forest Boundary
- ▭ District Boundary
- Vegetation Communities
 - Alpine
 - Aspen and Mixed Conifer
 - Barren Rock
 - Mixed Conifer (dry)
 - Mountain Brush
 - Perennial Forbs & Grasslands
 - Piñon-Juniper
 - Riparian Wetlands
 - Sagebrush Lands
 - Spruce/Fir Conifer

Prepared by: Manti-La Sal National Forest
 Contact: alexandorgonzales@fs.fed.us
 Date: 11/30/16
 Document Name: VegetationCommunities_SZ
 Coordinate System: NAD 1983 UTM Zone 12N

The Forest Service uses the most current and complete data available. GIS data and product accuracy may vary. They may be developed from sources of differing accuracy, accurate only at certain scales, based on modeling or interpretation, incomplete while being created or revised, etc. Using GIS products for purposes other than those for which they were created, may yield inaccurate or misleading results. The Forest Service reserves the right to correct, update, modify, or replace GIS products without notification.



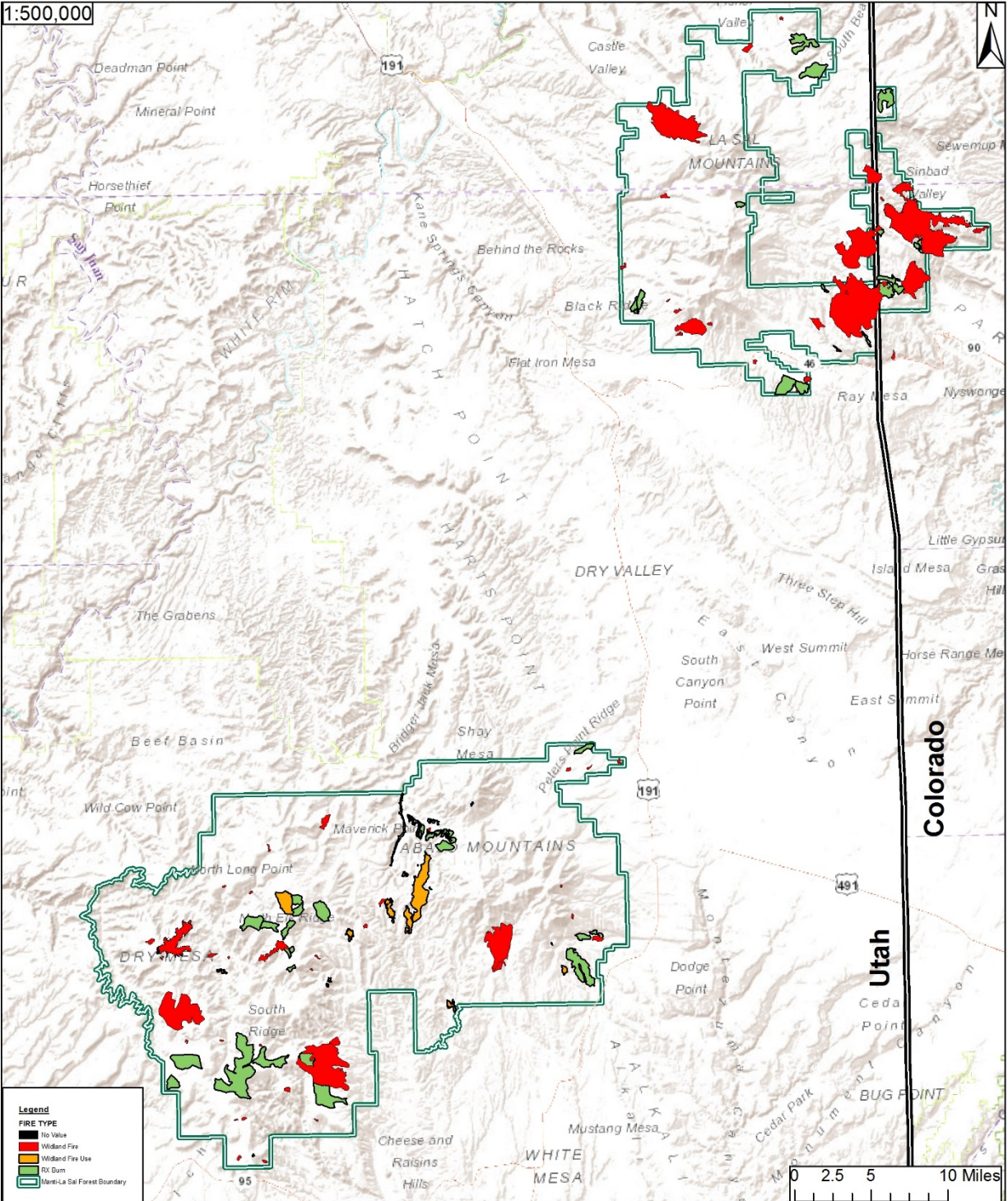


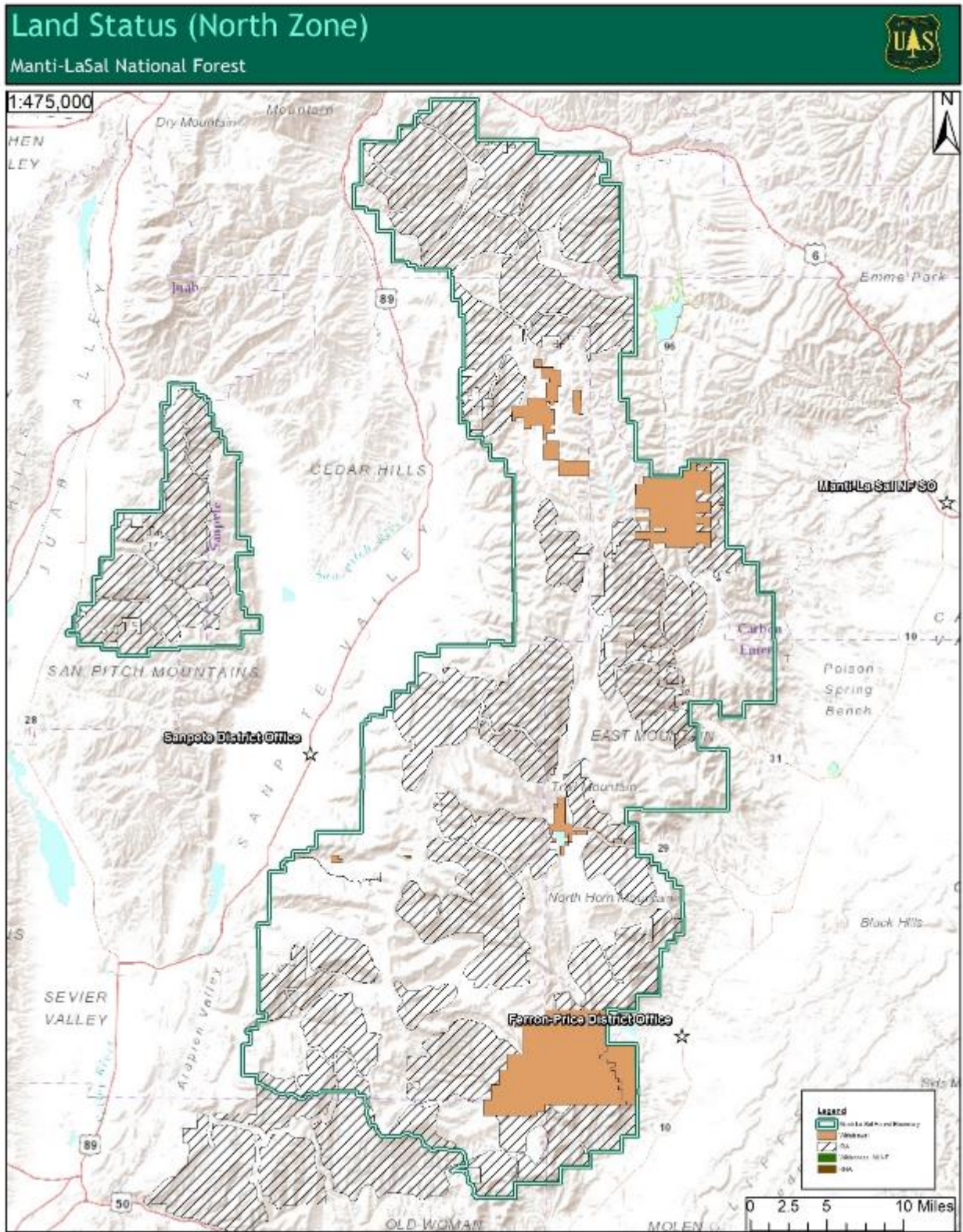
Fire History (South Zone)

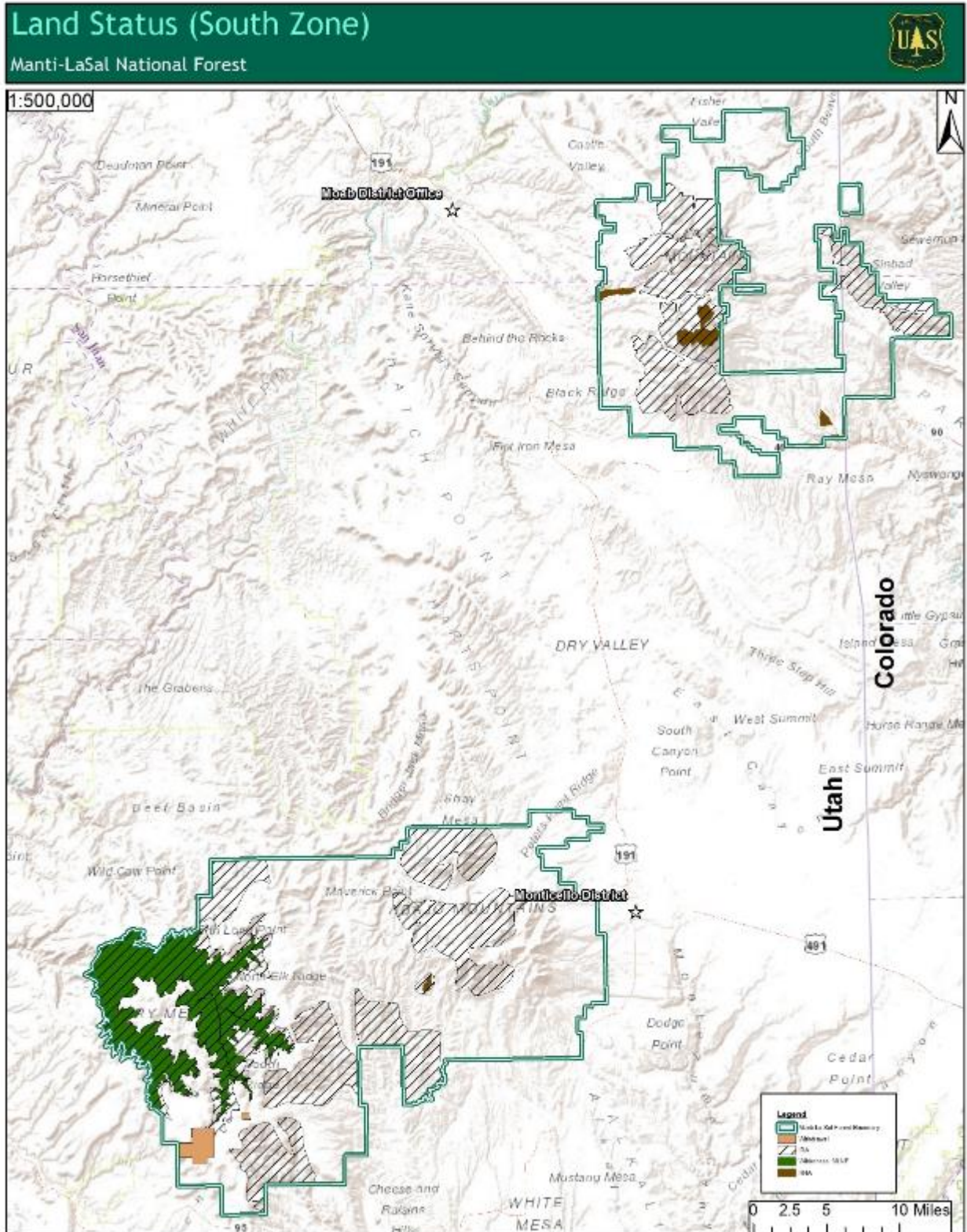
Manti-LaSal National Forest

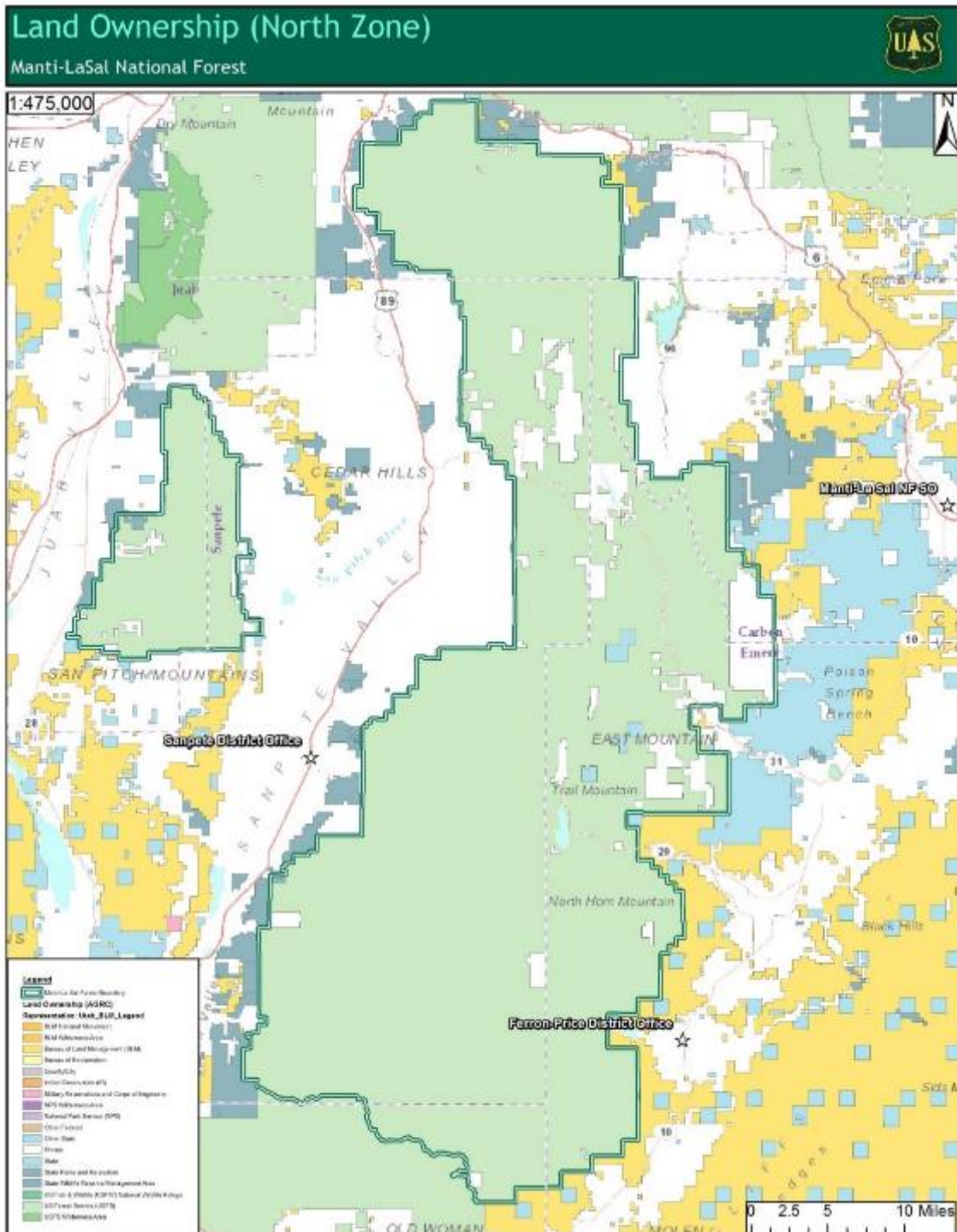


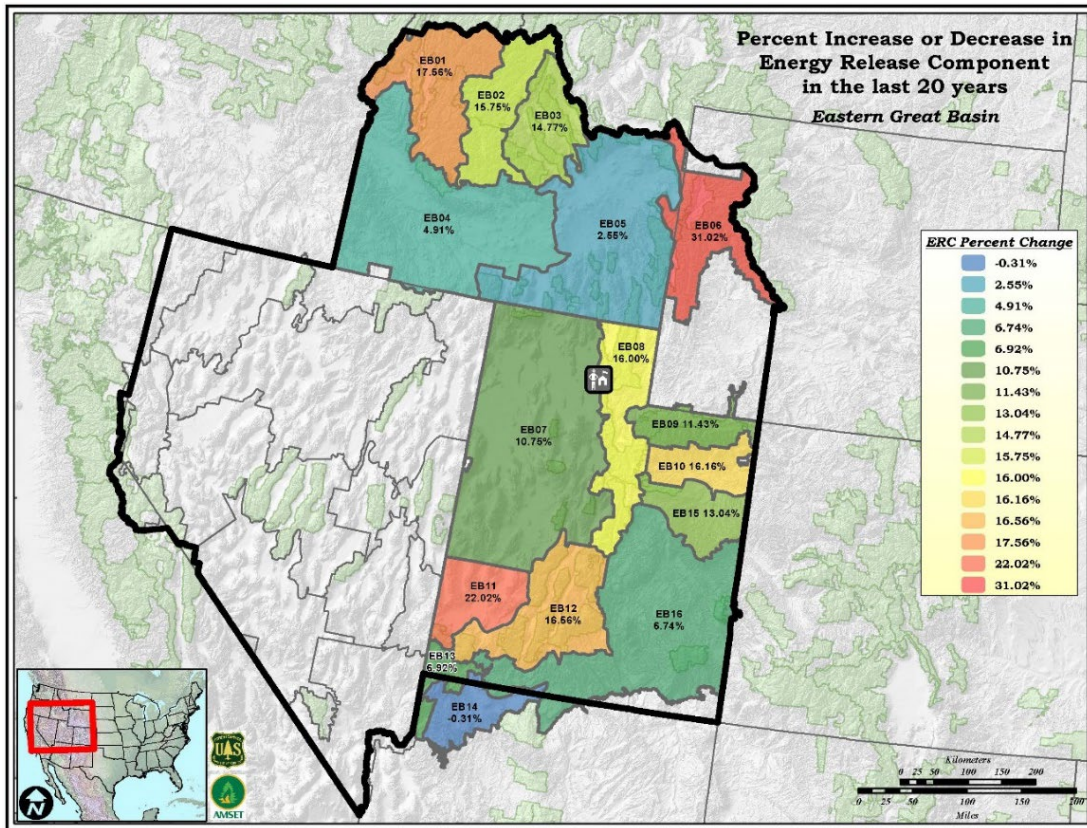
1:500,000

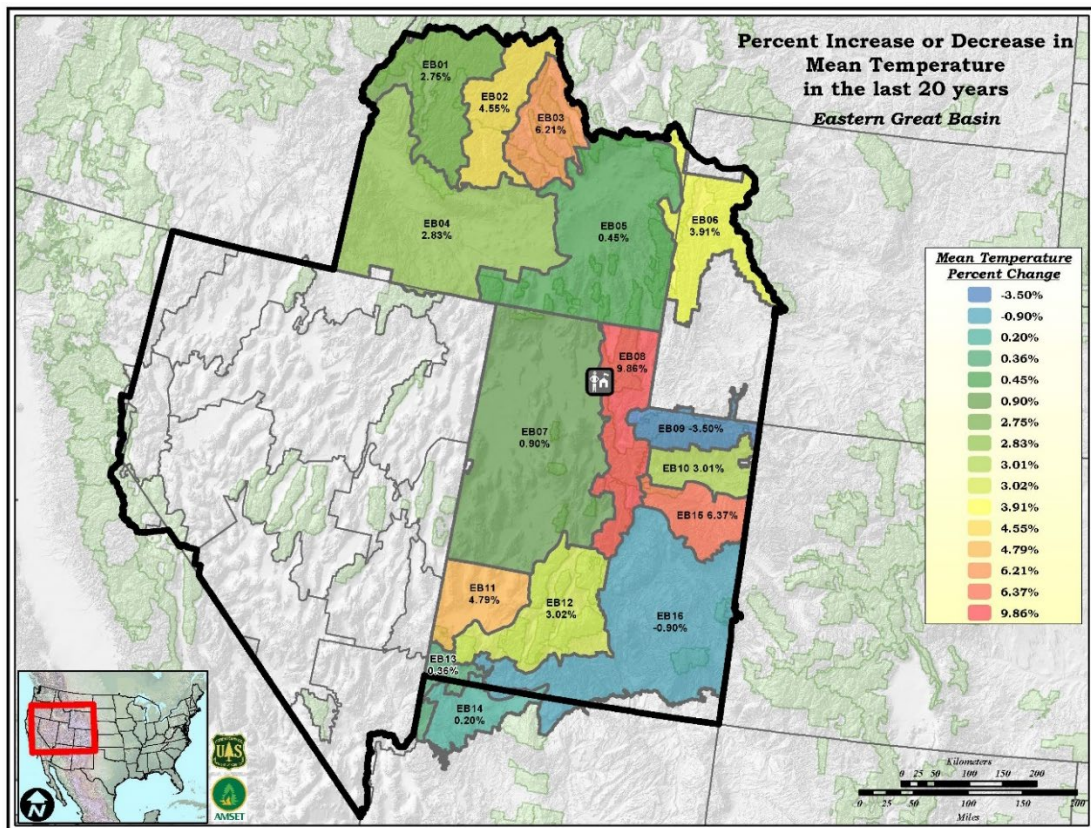


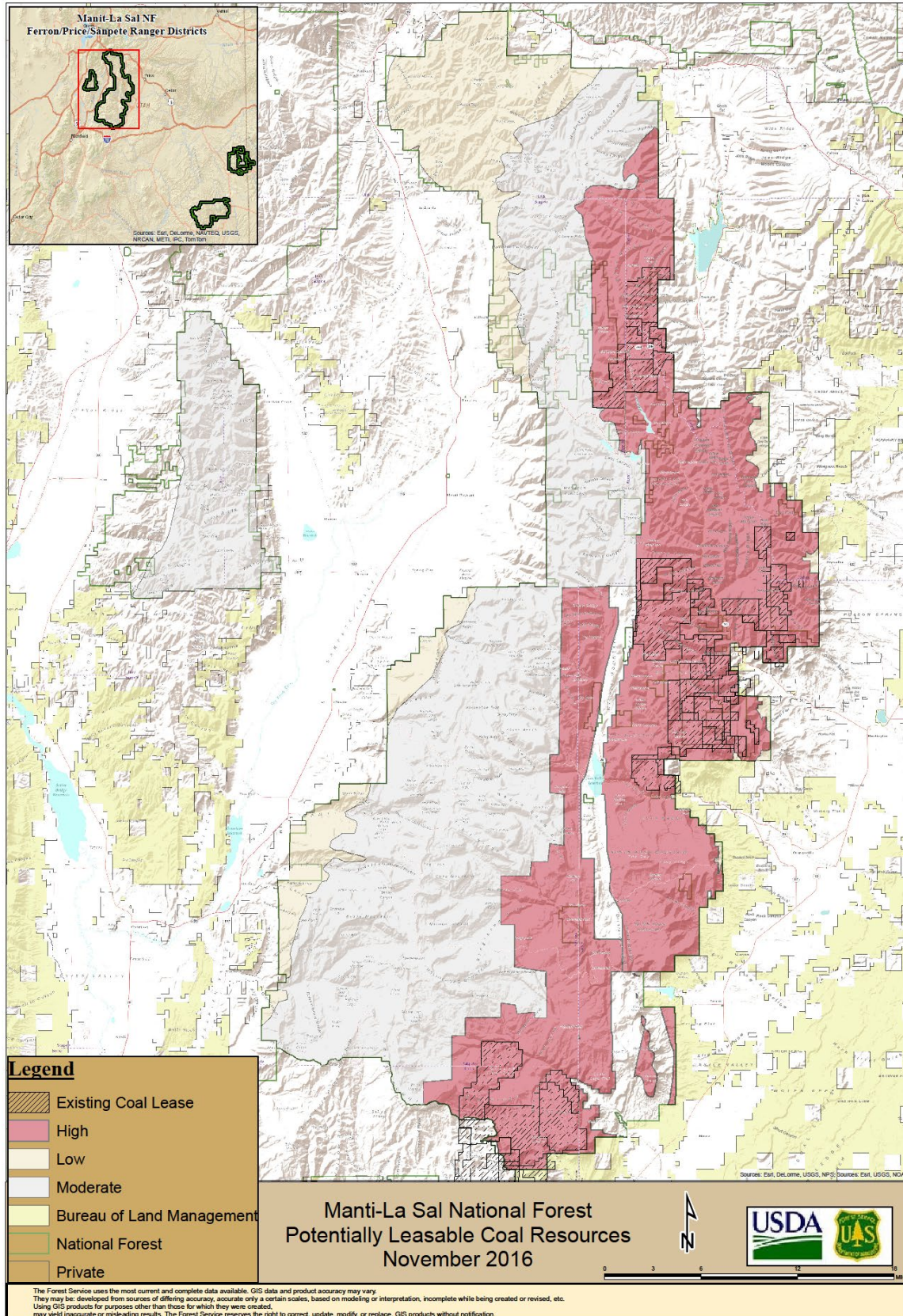












The following maps are products using the Minimum Travel Time module in Flam Map 5.0. It calculated fire growth and behavior by searching for the set of pathways with minimum fire spread times from ignition sources. MTT was used to simulate actual historical ignitions that occurred across the landscape for the time period 1992-2015. The Fire Program Analysis data set was utilized as the source for historical ignition data across all ownerships, as this is the most comprehensive dataset that is available. All fires that occurred each year were simultaneously simulated for 24 hours and over-laid in GIS to develop a frequency of where fire would likely impact the analysis in the absence of suppression actions.

