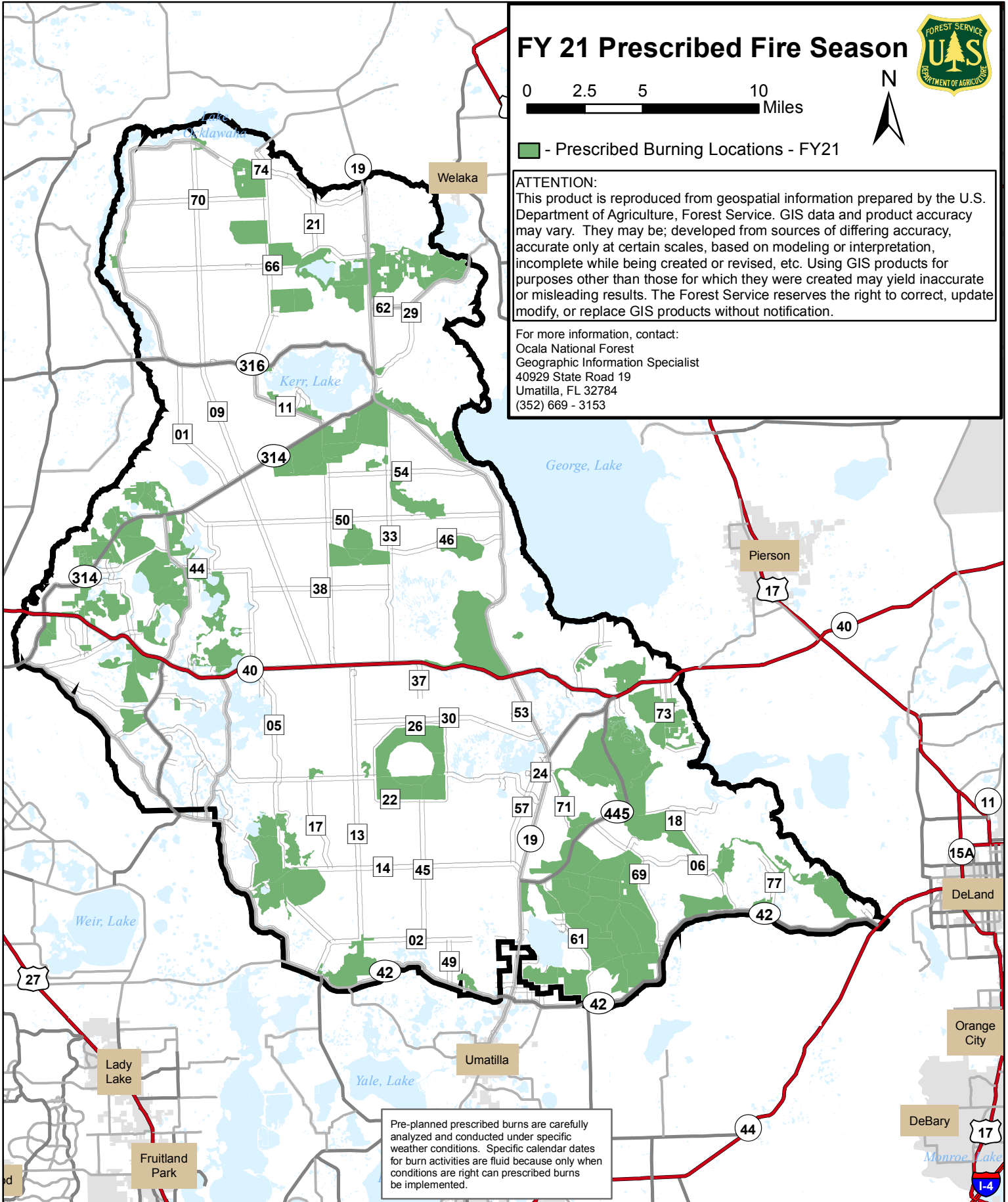


Ocala National Forest FY2021 Prescribed Burning Planning Map



FY 21 Prescribed Fire Season



0 2.5 5 10 Miles



■ - Prescribed Burning Locations - FY21

ATTENTION:

This product is reproduced from geospatial information prepared by the U.S. Department of Agriculture, Forest Service. GIS data and product accuracy may vary. They may be developed from sources of differing accuracy, accurate only at certain scales, based on modeling or interpretation, incomplete while being created or revised, etc. Using GIS products for purposes other than those for which they were created may yield inaccurate or misleading results. The Forest Service reserves the right to correct, update, modify, or replace GIS products without notification.

For more information, contact:
Ocala National Forest
Geographic Information Specialist
40929 State Road 19
Umatilla, FL 32784
(352) 669 - 3153

Pre-planned prescribed burns are carefully analyzed and conducted under specific weather conditions. Specific calendar dates for burn activities are fluid because only when conditions are right can prescribed burns be implemented.