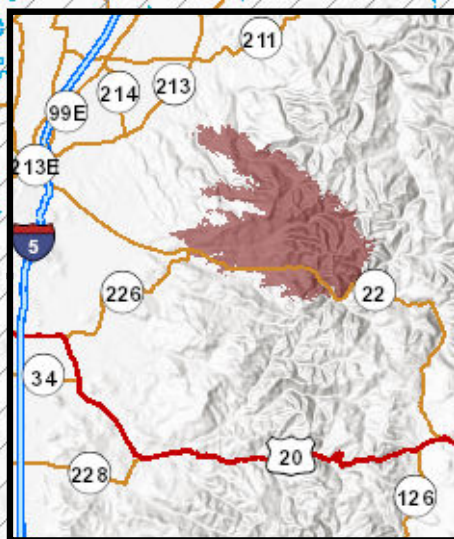


# **Beachie BAER** **Vegetation Mortality** **Basal Area Loss** **Willamette National Forest** **October 11, 2020**



0 1.25 2.5 5 7.5 10 Miles

Post-fire vegetation mortality products are intended primarily for use in assessing fire-related reforestation needs. These data help staff on local units prioritize areas for further assessment and support reforestation funding requests and decisions. They facilitate post-fire vegetation management decision-making by reducing planning and implementation costs. These data also serve a variety of related Agency objectives, such as wildlife habitat analysis and salvage harvest planning. In contrast, the soil burn severity map helps the BAER program meet its first priority, which is to address emergency soil stabilization needs to prevent further damage to life, property, and natural and cultural resources. See <https://fsapps.nwcg.gov/ravg/background-products-applications> for info on vegetation mortality data.



## **Vegetation Mortality** **Basal Area Loss**

